

## Product datasheet for **RG238828**

### **ABLIM3 (NM\_001301028) Human Tagged ORF Clone**

#### **Product data:**

Product Type:	Expression Plasmids
Product Name:	ABLIM3 (NM_001301028) Human Tagged ORF Clone
Tag:	TurboGFP
Symbol:	ABLIM3
Synonyms:	HMFN1661
Mammalian Cell Selection:	Neomycin
Vector:	pCMV6-AC-GFP (PS100010)
E. coli Selection:	Ampicillin (100 ug/mL)



[View online »](#)

**ORF Nucleotide Sequence:**

>RG238828 representing NM\_001301028.  
 Blue=ORF Red=Cloning site Green=Tag(s)

```
GCTCGTTTAGTGAACCGTCAGAATTTTGTAAACGACTCACTATAGGGCGGCCGGGAATTCGTGCGACTG
GATCCGGTACCGAGGAGATCTGCCGCCCGGATCGCC
ATGAACACTAGCATTCTTATCAGCAGAATCCTTACAATCCACGGGGCAGCTCCAATGTCATCCAGTGC
TACCGCTGTGGAGACACCTGCAAAGGGGAAGTGGTCCGCGTGCACAACAACCACTCCACATCAGATGC
TTCACCTGTCAAGTATGTGGCTGTGGCCTGGCCAGTCAGGCTTCTTCTCAAGAACCAGGAGTACATC
TGCACCCAGGACTACCAGCAACTCTATGGCACCCGCTGTGACAGCTGCCGGGACTTCATCACAGGGCAA
GTCATCTCGGCCCTGGGCCGCACTTACCACCCCAAGTCTTGTGTGACAGCTTGTGCAGGAAGCCTTTC
CCCATTGGAGACAAGGTGACCTTACGCGGTAAGAATGTGTGTCACAAACGTGCTCCAGTCCATGGCC
AGCAGTAAAGCCATCAAGATTCGTGGACCAAGCCACTGTCCGGGTGCAAGGAGGAGATCAAGCACGGC
CAGTCACTCCTGGCTCTGGACAAGCAGTGGCACGTGAGTCTCAAGTCCAGACTGCAGCGTCATC
CTCACCGGGGAGTATATCAGCAAGGATGGTGTCCATACTGTGAGTCCGACTACCATGCCAGTTTGGC
ATTAATGTGAGACTTGTGACCGATACATCAGTGGCAGAGTCTTGGAGGCAGGAGGAAGCACTACCAC
CCAACCTGTGCCAGTGTGTACGCTGCCACCAGATGTTACCCGAAGGAGAGGAAAATGTACCTCACAGGT
TCCGAGGTTTGGCACCCCATCTGCAAACAGGCAGCCCGGGCAGAGAAGAAGTTAAAGCATAGACGGACA
TCTGAAACCTCCATCTCACCCCTGGATCCAGCATTGGGTCAACCAACCGAGTCACTGCGACATCTAC
GAGAACCTGGACCTCCGGCAGAGACGGGCTCCAGCCCGGGTACATAGACTCCCCACCTACAGCCGG
CAGGGCATGTCCCCACCTTCTCCCGCTCACCTCACCCTACTACCGCTCTGGTGATTTGTCTACAGCA
ACCAAGAGCAAAACAAGTGAAGACATCAGCCAGACCTCCAAGTACAGTCCCATCTACTCGCCAGACCCC
TACTACTGCTTCGGAGTCTGAGTACTGGACCTACCATGGGTCCCCAAAGTGGCCGAGCCAGAAGGTTT
TCGTCTGGAGGAGAGGAGGATGATTTTACCCGACATGCACAAGTCCAAAGTGAATTTGGCCGGCTG
ATTCTGAAGGAAGAAATGAAGGCCCGGTTCGAGCTCCTATGCAGATCCCTGGACCCCTCCCGGAGCTCC
ACCAGCAGCCGGGAAGCCCTGCACACAGCTGGCTATGAGATGTCCTCAATGGCTCCCTCGGTGCGAC
TACCTGGCTGACAGTGATCCTCTCATCTCAAATCTGCCTCCCTGCCTACCGAAGAAATGGGCTG
CACAGGACACCCAGCGCAGACCTTCCACTACGACAGCATGAACGCAGTCAACTGGGCATGCGAGAG
TACAAGATCTACCCTTATGAACTGCTGCTGGTACTACAAGAGGAAGAAACCGACTGCCCAAGGATGTA
GACAGGACCCGTTTAGAGGGAACTTTTGAAGAGTGGCTGCTTA
ACGCGTACGCGGCCGCTCGAG - GFP Tag - GTTTAAAC
```

**Protein Sequence:**

>Peptide sequence encoded by RG238828  
 Blue=ORF Red=Cloning site Green=Tag(s)

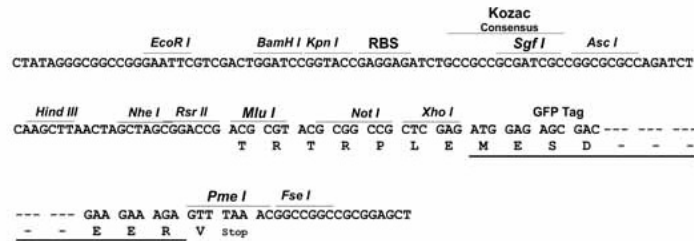
```
MNTSIPYQQPNYPNPRGSSNVIQCYRCGDTCKGEVVRVHNNHFHRCFTCQVCGCLAQSGFFFKNQEYI
CTQDYQLYGRCDSCRDFITGEVISALGRTYHPKCFVCSLCKRPFPIGDKVTFSGKECVCQTCQSMA
SSKPIKIRGPHCAGCKEEIKHGQSLALDKQWHVSCFKCQTCVILTGEYISKDGVVPYCESDYHAQFG
IKCETCDRYISGRVLEAGGKHYHPTCARCVRCHQMFTEGEEMYL TGSEVWHPICKQAARAEKCLKHRRR
SETSISPPGSSIGSPNRVICDIYENLDLRQRASSPGYIDSPTYSRQGMSPFTRSPHHYYRSGDLSTA
TKSKTSEDISQTSKYSPYSPDPYYASESEYWTYHGPSKVPARRFSSGGEEDDFDRSMHKLQSGIGRL
ILKEEMKARSSSYADPWTPPRSSTSSREALHTAGYEMSLNGSPRSHYLADSDPLISKASLPAARRNGL
HRTPSADLFHYDSMNAVNWGMREYKIYPYELLLVTRGRNRLPKDVRTRLEGNFWKSGCL
TRTRPLEMESDESGLPAMEIECRITGTLNGVEFELVGGGEGTPEQGRMTNKMKSTKGALTFSPYLLSHV
MGYGFYHFGTYPSGYENPFLHAINNGGYNTRIEKYEDGGVLHVSFSYRYEAGRVIGDFKVMGTGFPED
SVIFTDKIIRSNATVEHLHPMGDNDLDGSFTRTFLRDGGYYSSVVDSHMHFKSAIHPSILQNGGPMFA
FRRVEEDHSNTELGIVEYQHAFKTPDADAGEERV
```

**Restriction Sites:**

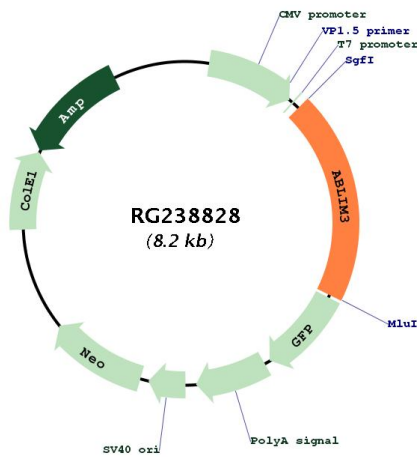
Sgfl-MluI

Cloning Scheme:

Cloning sites used for ORF Shuttling:



Plasmid Map:



<b>ACCN:</b>	NM_001301028
<b>ORF Size:</b>	1632 bp
<b>OTI Disclaimer:</b>	The molecular sequence of this clone aligns with the gene accession number as a point of reference only. However, individual transcript sequences of the same gene can differ through naturally occurring variations (e.g. polymorphisms), each with its own valid existence. This clone is substantially in agreement with the reference, but a complete review of all prevailing variants is recommended prior to use. <a href="#">More info</a>
<b>OTI Annotation:</b>	This clone was engineered to express the complete ORF with an expression tag. Expression varies depending on the nature of the gene.
<b>Components:</b>	The ORF clone is ion-exchange column purified and shipped in a 2D barcoded Matrix tube containing 10ug of transfection-ready, dried plasmid DNA (reconstitute with 100 ul of water).
<b>RefSeq:</b>	<a href="#">NM_001301028.3</a>
<b>RefSeq Size:</b>	3131 bp
<b>RefSeq ORF:</b>	1635 bp
<b>Locus ID:</b>	22885
<b>UniProt ID:</b>	<a href="#">O94929</a>
<b>Cytogenetics:</b>	5q32
<b>Protein Pathways:</b>	Axon guidance
<b>MW:</b>	62 kDa
<b>Gene Summary:</b>	This gene encodes a member of the actin-binding LIM (abLIM) family of proteins. These proteins are characterized by an N-terminal LIM domain and a C-terminal dematin-like domain. The encoded protein interacts with actin filaments and may be a component of adherens junctions in several cell types. A variant of this gene may be associated with pain sensitivity in male human patients. [provided by RefSeq, Sep 2016]