

Product datasheet for **RG238809**

PTPN5 (NM_001278238) Human Tagged ORF Clone

Product data:

Product Type:	Expression Plasmids
Product Name:	PTPN5 (NM_001278238) Human Tagged ORF Clone
Tag:	TurboGFP
Symbol:	PTPN5
Synonyms:	PTPSTEP; STEP; STEP61
Mammalian Cell Selection:	Neomycin
Vector:	pCMV6-AC-GFP (PS100010)
E. coli Selection:	Ampicillin (100 ug/mL)



[View online »](#)

ORF Nucleotide Sequence:

>RG238809 representing NM_001278238.
 Blue=ORF Red=Cloning site Green=Tag(s)

```
GCTCGTTTAGTGAACCGTCAGAATTTTGTAAACGACTCACTATAGGGCGGCCGGGAATTCGTGACTG
GATCCGGTACCGAGGAGATCTGCCGCCCGGATCGCC
ATGTGCTGCAGTGAGAGGCTACCGGGTCTCCCCAGCCGATAGTGATGGAGCACTGGACGAGGCTGAA
GGGCTCCAGACTCACAGAGAGAGATGCCGCCACCCCTCCTCCCTCGCGCCCTCAGATCCAGCTCAG
AAGCCACCACCTCGAGGGCTGGGAGCCACTCCCTCACTGTCAGGAGCAGCCTGTGCCTGTTCGCTGCC
TCACAGTTCCTGCCTGTGGGTGCTCTGGTTCAGCGTTATGGCCACATCTGGTCACAGAACGCC
ACAAACCTCGTCTCCTCTTTGCTGACGCTCCTGAAACAGCTGGAACCCACGGCCTGGCTTACTCTGGG
ACGTGGGAGTCCCAGTCTGCTGCTGGTCTTTCTGTCCGTGGGCTGGTCTCTTACCACCTGGTG
TGGCACCTCTGAGGACACCCAGAGCCACCCACTGCCCTGAGGACAGGCGCCAGTCAGTG
AGCCGCCAGCCCTCCTTACCTACTCAGAGTGGATGGAGGAGAAGATCGAGGATGACTTCTGGACCTC
GACCCGGTGCCCGAGACTCCTGTGTTGATTGTGTGATGGACATCAAGCCTGAGGCTGACCCACCTCA
CTACCGTCAAGTCCATGGGTCTGCAGGAGAGGGGTTCCAATGTCTCCCTGACCTGGACATGTGC
ACTCCGGGCTGCAACGAGGAGGGCTTTGGCTATCTCATGTCCCCAGTGAGGAGTCCGCCCGGAGTAC
CTGCTCAGCGCCTCCCGTGTCTCCAAGCAGAAGAGCTTCATGAAAAGGCCCTGGACCTTTCTGCTG
CAGGCGGAATCTTTGAAATCCCATGAACTTTGTGGATCCGAAAGAGTACGACATCCCTGGGCTGGTG
CGGAAGAACCAGTACAAAACCACTTCCCAACCTCACAGCAGAGTGTGTCTGACCTCACCAGACCT
GACGACCTCTGAGTTCCTACATCAATGCCAACTACATCCGGGGCTATGGTGGGGAGGAGAAGGTGTAC
ATCGCCACTCAGGAGCCATCGTCAGCACGGTCCGGACTTCTGGCGCATGGTGTGGCAGGAGCACAGC
CCCATTGTTCATGATCACCAACATCGAGGAGATGAACGAGAAATGCACCGAGTATTGGCCGGAGGAG
CAGGTGGCGTACGACGGTGTGAGATCACTGTGCAGAAAGTCATACACAGGAGGATTACCGGTCGCA
CTCATCTCCCTCAAGAGTGGACTGAGGAGCGAGGCTGAAGCATTACTGGTTCACATCCTGGCCCGAC
CAGAAGACCCAGACCGGCCCCCACTCCTGCACCTGGTGCAGGAGGTGGAGGAGGCAGCCAGCAG
GAGGGGCCCACTGTGCCCCATCATCGTCCACTGCAGTGCAGGGATTGGGAGGACCGGCTGCTTCATT
GCCACCAGCATCTGCTGCCAGCAGCTGCCGAGGAGGGTGTGGTGGACATCCTGAAGACCAGTGCCAG
CTCCGTCAGGACAGGGCGGCATGATCCAGACATGCGAGCAGTACCAGTTTGTGCACCACGTCATGAGC
CTCTACGAAAAGCAGCTGTCCACCAGTCCCAGAA
ACCGGTACGCGGCCGCTCGAG - GFP Tag - GTTTAAAC
```

Protein Sequence:

>Peptide sequence encoded by RG238809
 Blue=ORF Red=Cloning site Green=Tag(s)

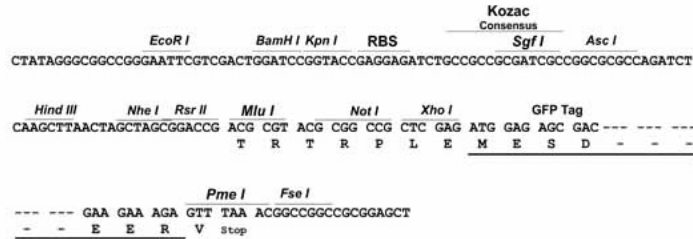
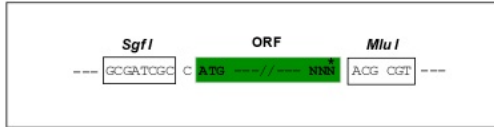
```
MCCSERLPLPQPIVMEALDEAEGLDQSQREMPPPPPSPSPDPAQKPPPRGAGSHSLTVRSSLCLFAA
SQFLLACGVLWFSYGYHIWSQNATNLVSSLLTLLKQLEPTAWLDSGTWGVPSLLLVFLSVGLVLTTLV
WHLLRTPPEPTPLPPEDRRQSVSRQPSFTYSEWMEEKIEDDFLDLDPVPETPVFDCVMDIKPEADPTS
LTVKSMGLQERRGSNVSLTDMCTPGCNEEGFYLMSPREESAREYLLSASRVLQAEELHEKALDPFLL
QAEFFEIPMNFVDPKEYDIPGLVRKNRYKILPNPHSRVCLTSPDPDPLSSYINANYIRGYGGEEKVY
IATQGPVSTVADFWRMVWQEHTPIIVMITNIEEMNEKCTEYWPEEQVAYDGVEITVQKVIHTEDYRLR
LISLSKSGTEERGLKHYWFTSWPDQKTPDRAPLLHLVREVEEAQQEGPHCAPIIVHCSAGIGRTGCFI
ATSICCQQLRQEGVVDILKTTCQLRQDRGGMIQTCEQYQFVHHVMSLYEKQLSHQSPE
TRTRPLEMESDESGLPAMEIECRITGTLNGVEFELVGGEGTPEQGRMTNKMSTKGALTFSPYLLSHV
MGYGFYHFGTYPSGYENPFLHAINNGGYNTRIEKYEDGGVLHVSFSYRYEAGRVIGDFKVMGTGFPED
SVIFTDKIIRSNATVEHLHPMGDNDLDGSFTRTFLRDGGYSSVVDSHMHFKSAIHPSILQNGGPMFA
FRRVEEDHSNTELGIVEYQHAFKTPDADAGEERV
```

Restriction Sites:

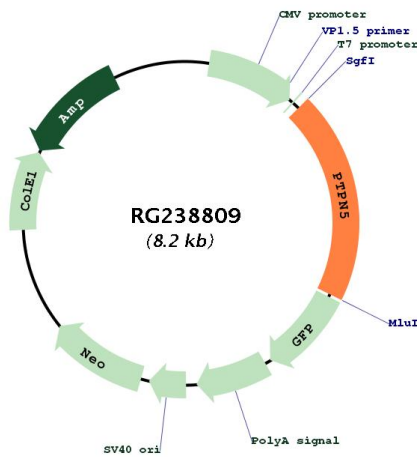
Sgfl-MluI

Cloning Scheme:

Cloning sites used for ORF Shutting:



Plasmid Map:



ACCN:	NM_001278238
ORF Size:	1623 bp
OTI Disclaimer:	The molecular sequence of this clone aligns with the gene accession number as a point of reference only. However, individual transcript sequences of the same gene can differ through naturally occurring variations (e.g. polymorphisms), each with its own valid existence. This clone is substantially in agreement with the reference, but a complete review of all prevailing variants is recommended prior to use. More info
OTI Annotation:	This clone was engineered to express the complete ORF with an expression tag. Expression varies depending on the nature of the gene.
Components:	The ORF clone is ion-exchange column purified and shipped in a 2D barcoded Matrix tube containing 10ug of transfection-ready, dried plasmid DNA (reconstitute with 100 ul of water).
RefSeq:	NM_001278238.2
RefSeq Size:	3068 bp
RefSeq ORF:	1626 bp
Locus ID:	84867
UniProt ID:	P54829
Cytogenetics:	11p15.1
Protein Families:	Druggable Genome, Phosphatase, Transmembrane
Protein Pathways:	MAPK signaling pathway
MW:	61.4 kDa
Gene Summary:	May regulate the activity of several effector molecules involved in synaptic plasticity and neuronal cell survival, including MAPKs, Src family kinases and NMDA receptors. [UniProtKB/Swiss-Prot Function]