

## Product datasheet for **RG238799**

### SPARCL1 (NM\_001291977) Human Tagged ORF Clone

#### Product data:

Product Type:	Expression Plasmids
Product Name:	SPARCL1 (NM_001291977) Human Tagged ORF Clone
Tag:	TurboGFP
Symbol:	SPARCL1
Synonyms:	MAST 9; MAST9; PIG33; SC1
Mammalian Cell Selection:	Neomycin
Vector:	pCMV6-AC-GFP (PS100010)
E. coli Selection:	Ampicillin (100 ug/mL)



[View online »](#)

**ORF Nucleotide Sequence:**

>RG238799 representing NM\_001291977.  
 Blue=ORF Red=Cloning site Green=Tag(s)

```

GCTCGTTTAGTGAACCGTCAGAATTTTGTAAACGACTCACTATAGGGCGGCCGGGAATTCGTGCGACTG
GATCCGGTACCGAGGAGATCTGCCGCCCGGATCGCC
ATGAGTGAGCCTCAGGAGAAAAAACTCTCAGAGAACTGATTTTTGGCTCCTGGTGTTAGTTCCTTC
ACAGATTCTAACCAACAAGAAAGTATCACAAAGAGAGAGGAAACCAAGAACAACTAGAAATTATTCA
CATCATCAGTTGAACAGGAGCAGTAAACATAGCCAAGGCCTAAGGGATCAAGGAACCAAGAGCAGGAT
CCAAATATTTCCAATGGAGAAGAGGAAGAAGAAAAAGAGCCAGGTGAAGTTGGTACCCACATGATAAC
CAAGAAAGAAAGACAGAATTGCCAGGGAGCATGCTAACAGCAAGCAGGAGGAAGACAATACCCAATCT
GATGATATTTTGAAGAGTCTGATCAACCAACTCAAGTAAGCAAGATGCAGGAGGATGAATTTGATCAG
GGTAACCAAGAACAAGAAGATAACTCCAATGCAGAAATGGAAAGAGGAAAATGCATCGAACGTCAATAAG
CACATTCAAGAACTGAATGGCAGAGTCAAGAGGGTAAAACTGGCCTAGAAGCTATCAGCAACCACAAA
GAGACAGAAGAAAAGACTGTTTCTGAGGCTCTGCTCATGGAACCTACTGATGATGGTAATACCACGCC
AGAAATCATGGAGTTGATGATGATGGCGATGATGATGGCGATGATGGCGCACTGATGGCCCCAGGCAC
AGTGCAAGTGATGACTACTTCATCCAAGCCAGGCCTTTCTGGAGCCGAGAGAGCTCAATCCATTGCC
TATCACCTCAAAATTGAGGAGCAAGAGAAAAAGTACATGAAAATGAAAATATAGGTACCACTGAGCCT
GGAGAGCCAAGAGGCCAAGAAAGCAGAGAACTCATCAATGAGGAGGAAACGTCAAGTGAAGGCAAC
ATGAGGGTGATGCTGTGGATTCTTGATGAGCTTCCAGTGTAAAGAGGCCACATCTGTAAGGCAGAC
CAACAGGGAAAACTCACTGTGTCTGCCAGGATCCAGTGACTTGTCTCCAACAAAACCCCTTGATCAA
GTTTGTGGCACTGACAATCAGACCTATGCTAGTTCCTGTCATCTATTCGCTACTAAATGCAGACTGGAG
GGGACCAAAAAGGGGCATCAACTCCAGCTGGATTATTTTGGAGCCTGCAAACTCTATTCTACTTGTACG
GACTTTGAAGTGATTCAGTTTCTCTACGGATGAGAGACTGGCTCAAGAATATCCATCAGACTGGAG
GAAGCCAACTCTGAACACGCTGGTTATCTAAATGAGAAGCAGAGAAATAAAGTCAAGAAATTTACCTG
GATGAAAAGAGGCTTTTGGCTGGGGACCATCCATTGATCTTCTCTTAAGGGACTTTAAGAAAACTAC
CACATGTATGTATCCTGTGCACTGGCAGTTTAGTGAACTTGACCAACACCCTATGGATAGAGTCTTG
ACACATTCTGAACTTGCTCCTCTGCGAGCATCTCTGGTGCCATGGAACACTGCATAACCCGTTTCTTT
GAGGAGTGTGACCCCAACAAGGATAAGCACATCACCTGAAGGAGTGGGGCCACTGCTTTGGAATAA
GAAGAGGACATAGATGAAAATCTCTTGTTT
ACGCGTACGCGGCCGCTCGAG – GFP Tag – GTTAAAC
  
```

**Protein Sequence:**

>Peptide sequence encoded by RG238799  
 Blue=ORF Red=Cloning site Green=Tag(s)

```

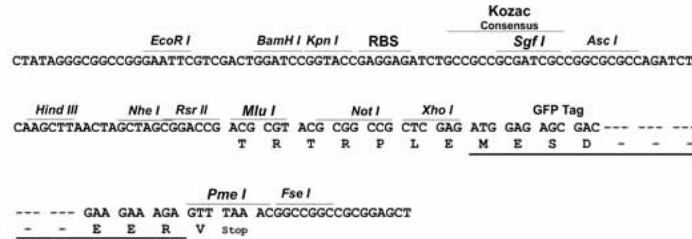
MSEPQEKKLSENTDFLAPGVSSFTDSNQESITKREENQEQRNYSHHQLNRSSKHSQGLRDQGNQEOD
PNISNGEEEEKEPGEVGTHNDNQERKTELPREHANSKQEEDNTQSDDILEESDQPTQVSKMQEDEFDQ
GNQEQEDNSNAEMEEENASNVNKHIQETEWQSQEKTGLEAISNHKETEEKTVSEALLMEPTDDGNTTP
RNHGVDDDGDDGDDGGTDGPRHSASDDYFIPSQAFLEAERAQSIAYHLKIEEQREKVHENENIGTTEP
GEHQEAKKAENSNEEETSSEGNMRVHAVDSCMSFQCKRGHICKADQQGKPHCVCQDPVTCPTKPLDQ
VCGTDNQTYASSCHLFATKCRLEGTKKGHLQLDYFGACKSIPTCTDFEVIQFPLRMRDWLKNILMQLY
EANSEHAGYLNEQQRNKVKIYLDEKRLLAGDHPIDLLLRDFKKNYHMYVYPVHWQFSELDQHPMDRVL
THSELAPLRASLVPMEHCITRFEECDPNKDKHITLKEWGHCFGIKEEDIDENLLF
TRTRPLEMESDESGLPAMEIECRITGTLNGVEFELVGGGEGTPEQGRMTNKMKSTKGALTFSPYLLSHV
MGYGFYHFGTYPSGYENPFLHAINNGGYNTRIEKYEDGGVLHVSFSYRYEAGRVIGDFKVMGTGFPED
SVIFTDKIIRSNATVEHLHMPGDNDLDGSFTRTFSLRDGGYSSVVDSHMHFKSAIHPSILQNGGPMFA
FRRVEEDHSNTELGIVEYQHAFKTPDADAGEERV
  
```

**Restriction Sites:**

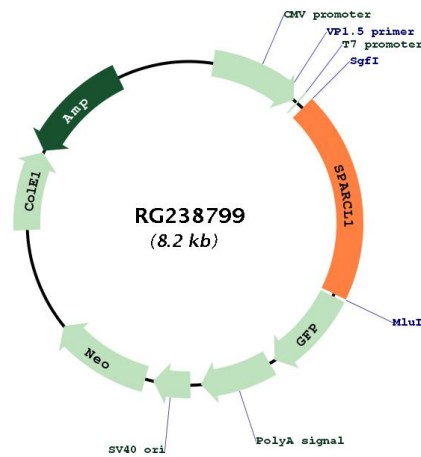
Sgfl-MluI

Cloning Scheme:

Cloning sites used for ORF Shutting:



Plasmid Map:



<b>ACCN:</b>	NM_001291977
<b>ORF Size:</b>	1617 bp
<b>OTI Disclaimer:</b>	The molecular sequence of this clone aligns with the gene accession number as a point of reference only. However, individual transcript sequences of the same gene can differ through naturally occurring variations (e.g. polymorphisms), each with its own valid existence. This clone is substantially in agreement with the reference, but a complete review of all prevailing variants is recommended prior to use. <a href="#">More info</a>
<b>OTI Annotation:</b>	This clone was engineered to express the complete ORF with an expression tag. Expression varies depending on the nature of the gene.
<b>Components:</b>	The ORF clone is ion-exchange column purified and shipped in a 2D barcoded Matrix tube containing 10ug of transfection-ready, dried plasmid DNA (reconstitute with 100 ul of water).
<b>RefSeq:</b>	<a href="#">NM_001291977.1</a> , <a href="#">NP_001278906.1</a>
<b>RefSeq Size:</b>	2670 bp
<b>RefSeq ORF:</b>	1620 bp
<b>Locus ID:</b>	8404
<b>UniProt ID:</b>	<a href="#">Q14515</a>
<b>Cytogenetics:</b>	4q22.1
<b>Protein Families:</b>	Druggable Genome, Secreted Protein
<b>MW:</b>	62.2 kDa