

Product datasheet for **RG238794**

IL1 Receptor I (IL1R1) (NM_001288706) Human Tagged ORF Clone

Product data:

Product Type:	Expression Plasmids
Product Name:	IL1 Receptor I (IL1R1) (NM_001288706) Human Tagged ORF Clone
Tag:	TurboGFP
Symbol:	IL1R1
Synonyms:	CD121A; D2S1473; IL-1R-alpha; IL1R; IL1RA; P80
Mammalian Cell Selection:	Neomycin
Vector:	pCMV6-AC-GFP (PS100010)
E. coli Selection:	Ampicillin (100 ug/mL)



[View online »](#)

ORF Nucleotide Sequence:

>RG238794 representing NM_001288706.
 Blue=ORF Red=Cloning site Green=Tag(s)

```
GCTCGTTTAGTGAACCGTCAGAATTTTGTAAACGACTCACTATAGGGCGGCCGGGAATTCGTGCGACTG
GATCCGGTACCGAGGAGATCTGCCGCCGCGATCGCC
ATGAAAGTGTACTCAGACTTATTTGTTTCATAGCTCTACTGATTCTTCTCTGGAGGCTGATAAATGC
AAGGAACGTGAAGAAAAATAATTTTAGTGTCACTGCAAAATGAAATTGATGTTCTGTCCTCTT
AACCCAAATGAACACAAAGGCACATAAAGTGGTATAAAGATGACAGCAAGACACCTGTATCTACAGAA
CAAGCCTCCAGGATTCATCAACACAAAGAGAACTTTGGTTTGTCTGCTAAGGTGGAGGATTCAGGA
CATTACTATTGCGTGGTAAGAAATTCATCTTACTGCCTCAGAATTAATAAAGTGCAAAATTTGTGGAG
AATGAGCCTAACTTATGTTATAATGCACAAGCCATATTTAAGCAGAAACTACCCGTTGCAGGAGACGGGA
GGACTTGTGTGCCCTTATATGGAGTTTTTAAAAATGAAAATAATGAGTTACCTAAATTACAGTGGTAT
AAGGATTGCAAACCTCTACTTCTTGACAATATACACTTTAGTGGAGTCAAAGATAGGCTCATCGTGATG
AATGTGGCTGAAAAGCATAGAGGAACTATACTTGTGCATGCATCCTACACATACTTGGGCAAGCAATAT
CCTATTACCCGGTAATAGAATTTATTACTCTAGAGGAAAACAAACCCACAAGGCCTGTGATTGTGAGC
CCAGCTAATGAGACAATGGAAGTAGACTTGGGATCCCAGATACAATTGATCTGTAATGTCACCGGCCAG
TTGAGTGACATTGCTTACTGGAAGTGAATGGGTGAGTAAATTGATGAAGTAGCCAGTGCCTAGGGGAA
GACTATTACAGTGTGAAAATCCTGCAAAACAAAGAAGGAGTACCCTCATCACAGTGCTTAATATATCG
GAAATTGAAAGTAGATTTTATAACATCCATTTACCTGTTTTGCCAAGAATACACATGGTATAGATGCA
GCATATATCCAGTTAATATATCCAGTCACTAATTTCCAGAAGCACATGATTGGTATATGTGTCACGTTG
ACAGTCATAATTGTGTGTTCTGTTTTTCACTATAAAATCTTCAAGATTGACATTGTGCTTTGGTACAGG
GATTCCTGCTATGATTTTCTCCAATAAAAGTCTTGCCTGAGGTCTTGGAAAAACAGTGTGGATATAAG
CTGTTTCAATTTATGGAAGGATGACTACGTTGGGGAAGACATTGTTGAGGTCATTAATGAAAACGTAAAG
AAAAGCAGAAGACTGATTATCATTTTAGTCAGAGAAACATCAGGCTTCAGCTGGCTGGGTGGTTCATCT
GAAGAGCAAATAGCCATGTATAATGCTCTTGTTCAGGATGGAATTAAGTTGCTCTGCTTGTGAGCTGGAG
AAAATCCAAGACTATGAGAAAATGCCAGAATCGATTAATTCATTAAGCAGAAACATGGGCTATCCGC
TGGTCAGGGGACTTTACACAGGGACCACAGTCTGCAAAGACAAGTTCTGGAAGAATGTCAGGTACCAC
ATGCCAGTCCAGCGACGGTCACCTTCACTAACACCAGTTACTGTCACCAGCCACTAAGGAGAAACTG
CAAAGAGAGGCTCACGTGCCTCTCGGG
ACGCGTACGCGGCCGCTCGAG – GFP Tag – GTTTAAAC
```

Protein Sequence:

>Peptide sequence encoded by RG238794
 Blue=ORF Red=Cloning site Green=Tag(s)

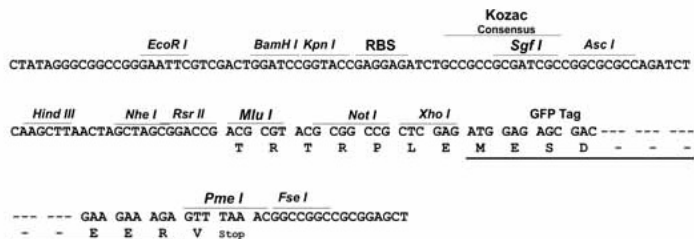
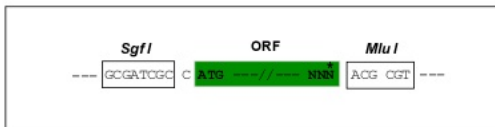
```
MKVLRLRLICFIALLISSLEADKCKEREKIIILVSSANEIDVRPCPLNPNEHKGITWYKDDSKTPVSTE
QASRIHQHKEKLFVPAKVEDSGHYCVVRNSSYCLRIKISAKFVENEPNLCYNAQAIQKQLPVAGDG
GLVCPYMEFFKNENNELPKLQWYKDKPLLLDNIHFSGVKDRLIVMNVAEKHRGNVYCHASYTYLQKQY
PITRIVIEFITLEENKPTRPVIVSPANETMEVDLGSQIQLICNVTGQLSDIAYWKWNGSVIDEDPPVLGE
DYYSVENPANKRRSTLITVLNISEIESRFYKHPFTCFANKNTHGIDAAYIQLIYPVTFNQKHMIGICVTL
TVIIVCSVFIYKIFKIDIVLWYRDSCYDFLPIKVLPEVLEKQCGYKLFYGRDDYVGEDIVEVINENVK
KSRRLIIILVRETSGFSLWGGSSSEQIAMYNALVQDGIKVVLELEKIQDYKMPESIKFIKQKHGAIR
WSGDFQTQGPQSAKTRFWKNVRYHMPVQRRSPSSKHQLLSPATKEKLQREAHVPLG
TRTRPLEMESDESGLPAMEIECRITGTLNGVEFELVGGEGTPEQGRMTNKMSTKGALTFSPYLLSHV
MGYGFYHFGTYPSGYENPFLHAINNGGYNTRIEKYEDGGVLHVSFSYRYEAGRVIGDFKVMGTGFPED
SVIFTDKIIRSNATVEHLHPMGDNDLDGSFTRTFLRDGGYSSVVDSHMHFKSAIHPSILQNGGPMFA
FRRVEEDHSNTELGIVEYQHAFKTPDADAGEERV
```

Restriction Sites:

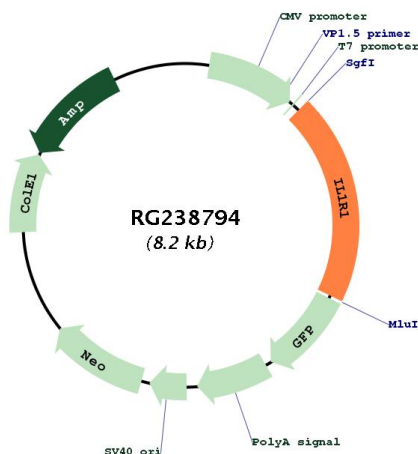
Sgfl-MluI

Cloning Scheme:

Cloning sites used for ORF Shutting:



Plasmid Map:



ACCN:	NM_001288706
ORF Size:	1614 bp
OTI Disclaimer:	The molecular sequence of this clone aligns with the gene accession number as a point of reference only. However, individual transcript sequences of the same gene can differ through naturally occurring variations (e.g. polymorphisms), each with its own valid existence. This clone is substantially in agreement with the reference, but a complete review of all prevailing variants is recommended prior to use. More info
OTI Annotation:	This clone was engineered to express the complete ORF with an expression tag. Expression varies depending on the nature of the gene.
Components:	The ORF clone is ion-exchange column purified and shipped in a 2D barcoded Matrix tube containing 10ug of transfection-ready, dried plasmid DNA (reconstitute with 100 ul of water).
RefSeq:	NM_001288706.2
RefSeq Size:	4990 bp
RefSeq ORF:	1617 bp
Locus ID:	3554
UniProt ID:	P14778
Cytogenetics:	2q11.2-q12.1
Protein Families:	Druggable Genome, Transmembrane
Protein Pathways:	Apoptosis, Cytokine-cytokine receptor interaction, Hematopoietic cell lineage, MAPK signaling pathway
MW:	62.5 kDa
Gene Summary:	This gene encodes a cytokine receptor that belongs to the interleukin-1 receptor family. The encoded protein is a receptor for interleukin-1 alpha, interleukin-1 beta, and interleukin-1 receptor antagonist. It is an important mediator involved in many cytokine-induced immune and inflammatory responses. This gene is located in a cluster of related cytokine receptor genes on chromosome 2q12. [provided by RefSeq, Dec 2013]