

Product datasheet for **RG238784**

FMO1 (NM_001282692) Human Tagged ORF Clone

Product data:

Product Type:	Expression Plasmids
Product Name:	FMO1 (NM_001282692) Human Tagged ORF Clone
Tag:	TurboGFP
Symbol:	FMO1
Mammalian Cell Selection:	Neomycin
Vector:	pCMV6-AC-GFP (PS100010)
E. coli Selection:	Ampicillin (100 ug/mL)



[View online »](#)

ORF Nucleotide Sequence:

>RG238784 representing NM_001282692.
 Blue=ORF Red=Cloning site Green=Tag(s)

```
GCTCGTTTAGTGAACCGTCAGAATTTTGTAAACGACTCACTATAGGGCGGCCGGGAATTCGTGCGACTG
GATCCGGTACCGAGGAGATCTGCCGCCGCGATCGCC
ATGCAGGAGAACATGGCCAAGCGAGTTGCCATTTGTGGAGCTGGGGT CAGCGCCTGGCCTCCATCAAG
TGCTGCTGGAAGAAGGACTGGAGCCACCTGCTTTGAGAGGAGCGATGACCTTGGGGGGCTGTGGAGA
TTCACCGAACATGTTGAAGAAGGCAGAGCCAGTCTCTACAAGTCTGTGGTTTCCAACAGCTGCAAGGAG
ATGCTCTGTTACTCAGACTTTCCATTCCAGAAGATTATCCAAACTATGTGCCAAATTCTCAATTCTCG
GAATATCTCAAAATGTATGCAAACCACTTTGACCTTCTGAAACACATTCAATTCAAGACCAAAGTCTGC
AGTGTAACAAAATGCTCAGATTCTGCTGTCTCTGGCCAATGGGAGGTGGTCACTATGCATGAAGAGAAG
CAAGAGTCAGCCATCTTTGATGCTGTCTGGTCTGCACTGGCTTTCTACTAATCCTTATTTGCCACTG
GATTCCTTTCCAGGTATTAATGCCTTTAAAGGCCAGTACTTTATAGCCGGCAATATAAGCATCCAGAT
ATATTTAAGGACAAGAGAGTCTTGTGATTGGAATGGGAAATCTGGCACAGACATTGCTGTGGAGGCC
AGCCACCTGGCGAAAAGGTGTTCTCAGCACCACCGAGGGGGATGGGTGATCAGCGGAATCTTTGAC
TCGGGCTACCCATGGGACATGGTGTTCATGACACGCTTTCAGAACATGTTGAGAAATCCCTCCCAACC
CCAATTGTGACTTGGTTGATGGAGCGAAAGATAAACAACCTGGCTCAATCATGCAAATTACGGCTTAATA
CCAGAAGACAGGACTCAGCTGAAAGAGTTTGTGCTAAATGATGAGCTCCCAGGACGCATCATCACTGGG
AAAGTGTTCATCAGGCCAAGCATAAAAGAGGTAAGGAAAACCTCTGTCATATTTAACAATACTTCAAAG
GAAGAGCCTATTGACATCATTGTCTTTGCCACTGGATACACATTTGCTTTCCCTTCTTGTAGTCT
GTAGTGAAGTTGAAGATGGCCAGGCCACTGTACAAGTATATCTTCCCTGCACATCTGCAAAAAGCCA
ACCCTGGCCATTATTGGCCTCATCAAACCTTGGGCTCCATGATACCTACAGGAGAAACACAAGCTCGG
TGGGCTGTTTCGAGTCTGAAAGGTGTAATAAGTTACCACCAAGTGCATGATAGAGGAAATTAAT
GCAAGGAAAGAAAACAAGCCAGTTGGTTTGGCTTGTGCTACTGCAAGGCTTTACAATCAGATTATATC
ACATACATAGATGAACTCCTGACCTATATCAATGCAAAAACCAACCTGTTCTCTATGCTCCTAACGGAT
CCACATCTGGCTCTGACCGTCTTCTTTGGCCATGCTCACCATAACCAGTCCGCTTGACTGGCCAGGA
AAATGGGAAGGAGCCAGAAATGCCATCATGACCCAGTGGGACCGAACATTCAAGGTATCAAAAGCTCGA
GTTGTACAAGAGTCTCCATCTCCCTTTGAAAGTTTCTTAAAGTCTTTAGCTTTCTGGCTTTGCTTGTG
GCTATTTTCTGATTTTCCTA
```

ACGCGTACGCGGCCGCTCGAG – GFP Tag – GTTAAAC

Protein Sequence:

>Peptide sequence encoded by RG238784
 Blue=ORF Red=Cloning site Green=Tag(s)

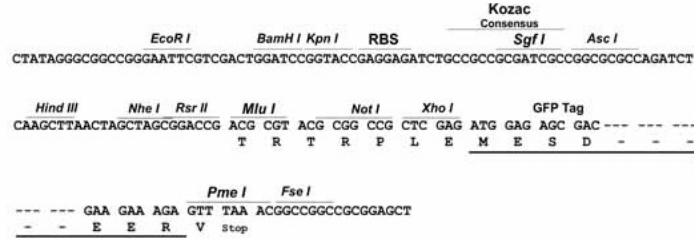
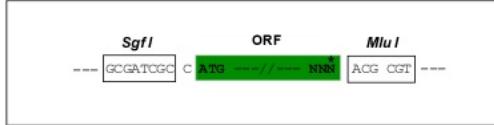
```
MQENMAKRVAIVGAGVSGLASIKCLEEGLPTCFERSDDLGLWRFTEHVEEGRASLYKSVVSNCKE
MSCYSDFPFPEYPNYPNSQFLEYLKMVYANHFDLLKHIQFKTKVCSVTKCSDSAVSGQWEVVTMHEEK
QESAIFDAVMVCTGFLTNPYLPDSFPGINAFKQYFHSRQYKHPDIFKDKRVLVIGMNSGTDIAVEA
SHLAEKVFLSTTGGWVSRIFDSGYPWDMVFMTRFQNLRLNSLPTPIVWLMERKINNWLNHANYGLI
PEDRTLQKEFVFNDELPGRIITGKVFIRPSIKVENSIVFNNTSKEEPIDIIVFATGYTFAFPFLDES
VVKVEDGQASLYKIYFPAHLQKPTLAIIGLIKPLGSMIPTGETQARWAVRVLKGVNKLPPPSVMIEEIN
ARKENKPSWFGLCYCKALQSDYITYIDELLTYINAKPNLFSMLLTDPHLALT VFFGPCSPYQFRLTGPG
KWEGARNAIMTQWDRTFKVIKARVVQESPSPFESFLKVSFLALLVAIFLIFL
TRTRPLEMESDESGLPAMEIECRITGTLNGVEFELVGGEGTPEQGRMTNKMSTKGALTFSPYLLSHV
MGYGFYHFGTYPSGYENPFLHAINNGGYNTRIEKYEDGGVLHVSFSYRYEAGRVIGDFKVMGTGFPED
SVIFTDKIIRSNATVEHLHPMGDNDLDGSFTRTFSLRDGGYSSVVD SHMHFKSAIHPSILQNGGPMFA
FRRVEEDHSNTELGIVEYQHAFKTPDADAGEERV
```

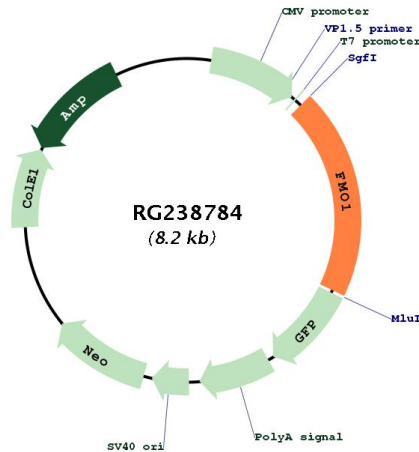
Restriction Sites:

Sgfl-MluI

Cloning Scheme:

Cloning sites used for ORF Shutting:



Plasmid Map:


ACCN: NM_001282692

ORF Size: 1608 bp

OTI Disclaimer: The molecular sequence of this clone aligns with the gene accession number as a point of reference only. However, individual transcript sequences of the same gene can differ through naturally occurring variations (e.g. polymorphisms), each with its own valid existence. This clone is substantially in agreement with the reference, but a complete review of all prevailing variants is recommended prior to use. [More info](#)

OTI Annotation: This clone was engineered to express the complete ORF with an expression tag. Expression varies depending on the nature of the gene.

Components: The ORF clone is ion-exchange column purified and shipped in a 2D barcoded Matrix tube containing 10ug of transfection-ready, dried plasmid DNA (reconstitute with 100 ul of water).

RefSeq: [NM_001282692.1](#), [NP_001269621.1](#)

RefSeq Size:	2198 bp
RefSeq ORF:	1611 bp
Locus ID:	2326
UniProt ID:	Q01740
Cytogenetics:	1q24.3
Protein Families:	Druggable Genome
Protein Pathways:	Drug metabolism - cytochrome P450
MW:	61.3 kDa
Gene Summary:	<p>Metabolic N-oxidation of the diet-derived amino-trimethylamine (TMA) is mediated by flavin-containing monooxygenase and is subject to an inherited FMO3 polymorphism in man resulting in a small subpopulation with reduced TMA N-oxidation capacity resulting in fish odor syndrome Trimethylaminuria. Three forms of the enzyme, FMO1 found in fetal liver, FMO2 found in adult liver, and FMO3 are encoded by genes clustered in the 1q23-q25 region. Flavin-containing monooxygenases are NADPH-dependent flavoenzymes that catalyzes the oxidation of soft nucleophilic heteroatom centers in drugs, pesticides, and xenobiotics. Several transcript variants encoding different isoforms have been found for this gene. [provided by RefSeq, Sep 2013]</p>