

Product datasheet for **RG238764**

YTHDF3 (NM_001277815) Human Tagged ORF Clone

Product data:

Product Type:	Expression Plasmids
Product Name:	YTHDF3 (NM_001277815) Human Tagged ORF Clone
Tag:	TurboGFP
Symbol:	YTHDF3
Synonyms:	DF3
Mammalian Cell Selection:	Neomycin
Vector:	pCMV6-AC-GFP (PS100010)
E. coli Selection:	Ampicillin (100 ug/mL)



[View online »](#)

ORF Nucleotide Sequence:

>RG238764 representing NM_001277815.
 Blue=ORF Red=Cloning site Green=Tag(s)

```
GCTCGTTTAGTGAACCGTCAGAATTTTGTAAACGACTCACTATAGGGCGGCCGGGAATTCGTGCGACTG
GATCCGGTACCGAGGAGATCTGCCGCCGCGATCGCC
ATGTCAGATCCATACATGCCTAGTTACTATGCTCCATCCATTGGATTCCATATTCTCTTGGGGAAGCA
CGGTGGTCCACAGCTGGAGACCAGCCTATGCCATATCTGACAACCTATGGACAAATGAGTAATGGAGAA
CATCACTATATACCAGATGGTGTATTTAGTCAACCTGGGGCATTAGGAAATACCCCTCATTCTTGGT
CAACATGGATTTAACTTTTTCTGTTAATGCTGATTTCTCTACATGGGGACAAGTGGATCTCAGGGA
CAATCAACACAAAGTTCTGCTTATAGTAGCAGTTATGGCTATCCACCTAGTTCTCTTGGGAGAGCTATT
ACTGATGGACAGGCTGGATTTGGCAATGATACTTTGAGTAAGGTGCCTGGCATTAGCAGTATTGAGCAA
GGCATGACTGGACTGAAAATTGGTGGTACCTGACAGCTGCAGTGACAAAACTGTAGGTACAGCTTTG
AGCAGCAGTGGTATGACTAGCATTGCAACCAATAGTGTGCCCCAGTTAGCAGTGCAGCACCTAAACCA
ACCTCCTGGGCTGCCATTGCCAGAAAGCCTGCCAAACCTCAACCGAAACTTAAACCAAGGGCAATGTG
GGAATTTGGGGTCTGCTGTACCACCACCTCCTATAAAACACAACATGAATATTGGAAGTGGGATGAA
AAAGGGTCAGTGGTAAAGGCTCCACCAACCAACAGTTCTGCCTCCTAAACTATAATCCAGCAGCCT
CAGCCATTAATCAACCACCACCATTGGTGCAAAGCCAAGTGCCTCAACAGCAGCCTCAACCACCACAA
CCACAGCAGCAACAAGGACCTCAGCCACAGGCCAGCCTCACCAAGTGCAGCCTCAACAGCAGCAGCTG
CAGAATCGCTGGGTAGCTCCTCGTAACAGGGGAGCAGGCTTCAACCAGAACAAATGGAGCGGGCAGTGAA
AACTTTGGTTTAGGTGTTGACCTGTGCTGCTTACCTTCTAGTGTAGAAGTGCATCCCGTGTGGAA
AAGCTAAAGGCCATAACAACATAATCCCAAAGACTTTGATTGGAATCTGAAGAATGGAGTGTGTTT
ATAATTAAGCTACTCTGAGGATGACATACATCGTTCCATTAATACTCTATCTGGTGTAGTACTGAG
CATGGTAATAAGCGTTTGGATGCAGCTTACCGTTCCTGATGGGAAAGGCCACTCTATTTACTCTTC
AGTGTGAATGGCAGTGGACATTTTTGTGAGTGGCTGAAATGAAGTCTGTTGTGGACTATAATGCGTAT
GCTGGTGTCTGGTCTCAGGATAAGTGGAAAGGGCAAATTTGAAGTAAATGGATCTTTGTCAAAGATGTT
CCCAATAACCAATTACGGCATATTGCTTAGAAAAATAAGACAACAAACCGTTACCAATTCAAGGGAC
ACTCAAGAGGTACCCCTAGAAAAAGCTAAGCAAGTGTAAAAATAATTGCTACTTTCAAGCATACCACC
TCAATCTTTGATGACTTTGCACATTATGAAAAGCGTCAAGAAGAGGAGGAAGCCATGCGTAGGGAGAGA
AATAGAAACAAACAA
ACGCGTACGCGGCCGCTCGAG - GFP Tag - GTTTAAAC
```

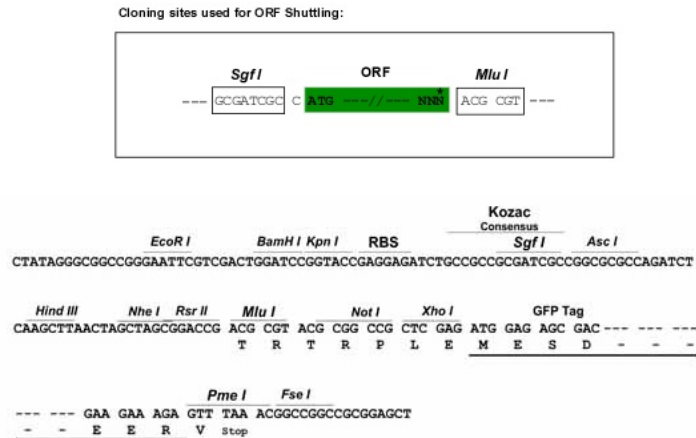
Protein Sequence:

>Peptide sequence encoded by RG238764
 Blue=ORF Red=Cloning site Green=Tag(s)

```
MSDPYMPSYYAPSIGFPYSLGEAAWSTAGDQMPYLLTYGQMSNGEHYIPDGVFSQPGALGNTPPFLG
QHGFNFPPGNADFSTWGTSGSQGSTQSSAYSSSYGPPSSLGRAITDQGAGFNDLTKVPGISSIEQ
GMTGLKIGGDLTAAVTKTVGTALSSSGMTSIATNSVPPVSSAAPKPTSWAAIARKPAKPPKPKKGNV
GIGGSVPPPIKHNMI GTWDEKGSVVKAPPTQPVLPPQTIIQQPQPLIQPPPLVQSQLPQQQPQPQ
PQQQQGPQQAQPHQVQPQQQLQNRWVAPRNRGAGFNQNGAGSENFGLGVVPSVSPSSVEVHPVLE
KLKAINNYPKDFDWNLNKGRVFIKSYSEDDIHRSIKYSIWCSSTEHNKRLDAAAYRSLNGKPLYLLF
SVNGSGHFCGVAEMKSVVDYNAAGVWSQDKWKGFVKWIFVKDVPNNQLRHIRENNDNPKVNTSRD
TQEVPLEKAKQVLKIIATFKHTTSIFDDFAHYEKRQEEEEAMRRERNRNKQ
TRTRPLEMESDESGLPAMEIECRITGTLNGVEFELVGGEGTPEQGRMTNKMSTKGALTFSPYLLSHV
MGYGFYHFGTYPSGYENPFLHAINNGGYNTRIEKYEDGGVLHVSFSYRYEAGRVIGDFKVMGTGFPED
SVIFTDKIIRSNATVEHLHPMGDNDLDGSFTRTFLRDGGYYSSVVDSHMHFKSAIHPSILQNGGPMFA
FRRVEEDHSNTELGIVEYQHAFKTPDADAGEERV
```

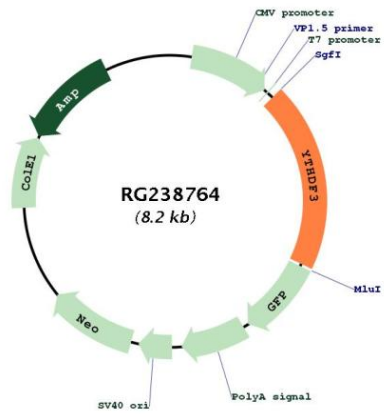
Restriction Sites:

Sgfl-MluI

Cloning Scheme:


- ACCN:** NM_001277815
- ORF Size:** 1602 bp
- OTI Disclaimer:** The molecular sequence of this clone aligns with the gene accession number as a point of reference only. However, individual transcript sequences of the same gene can differ through naturally occurring variations (e.g. polymorphisms), each with its own valid existence. This clone is substantially in agreement with the reference, but a complete review of all prevailing variants is recommended prior to use. [More info](#)
- OTI Annotation:** This clone was engineered to express the complete ORF with an expression tag. Expression varies depending on the nature of the gene.
- Components:** The ORF clone is ion-exchange column purified and shipped in a 2D barcoded Matrix tube containing 10ug of transfection-ready, dried plasmid DNA (reconstitute with 100 ul of water).
- RefSeq:** [NM_001277815.1](#), [NP_001264744.1](#)
- RefSeq Size:** 5202 bp
- RefSeq ORF:** 1605 bp
- Locus ID:** 253943
- UniProt ID:** [Q7Z739](#)
- Cytogenetics:** 8q12.3
- MW:** 58.8 kDa
- Gene Summary:** This gene encodes a member of the YTH (YT521-B homology) domain protein family. The YTH domain is common in eukaryotes, is often found in the middle of the protein sequence, and may function in binding to RNA. Alternative splicing results in multiple transcript variants. [provided by RefSeq, Apr 2013]

Product images:



Circular map for RG238764