

Product datasheet for **RG238761**

EHD1 (NM_001282444) Human Tagged ORF Clone

Product data:

Product Type:	Expression Plasmids
Product Name:	EHD1 (NM_001282444) Human Tagged ORF Clone
Tag:	TurboGFP
Symbol:	EHD1
Synonyms:	H-PAST; HPAST1; PAST; PAST1
Mammalian Cell Selection:	Neomycin
Vector:	pCMV6-AC-GFP (PS100010)
E. coli Selection:	Ampicillin (100 ug/mL)



[View online »](#)

ORF Nucleotide Sequence:

>RG238761 representing NM_001282444.
 Blue=ORF Red=Cloning site Green=Tag(s)

```

GCTCGTTTAGTGAACCGTCAGAATTTTGTAAACGACTCACTATAGGGCGGCCGGGAATTCGTGCGACTG
GATCCGGTACCGAGGAGATCTGCCGCCCGCATCGCC
ATGTTTCAGCTGGGTGAGCAAGGATGCCCCGCCAAGAAGGAGCCGGAGCTCTCCAGACGGTGGCCGAG
GGGCTGCGGCAGCTGTACGCGCAGAAGCTGTACCCCTGGAGGAGCACTACCGCTTCCACGAGTTCAC
TCGCCCGCGCTGGAGGACGCTGACTTCGACAACAAGCCTATGGTCTCCTCGTGGGGCAGTACAGCACG
GGCAAGACCACCTTCATCCGACACCTGATCGAGCAGGACTTCCCGGGGATGCGCATCGGGCCCGAGCCC
ACCACCGACTCCTTCATCGCCGTCATGCACGGCCCCACTGAGGGCGTGGTCCCGGCAACGCGCTCGTG
GTGGACCCGCGGCCCTTCCGCAAGCTCAACGCGTTTGGCAACGCTTTCCTCAACAGGTTTATGTGT
GCCCAGCTGCCCAACCCCGTCTGGACAGCATCAGCATCATCGACACCCCGGGATCCTGTCTGGAGAG
AAGCAGCGGATCAGCAGAGGCTATGACTTTGCAGCCGCTCTGGAGTGGTTCGCGGAGCGTGTGGACCGC
ATCATCTGCTCTTCGACGCCACAAGCTGGACATCTCCGATGAGTTCTCGGAAGTGATCAAGGCTCTG
AAGAACCATGAGGACAAGATCCGCGTGGTCTGAACAAGGAGCAGACGATCGAGACGACGAGCTGATG
CGGGTGTACGGGGCCCTCATGTGGTCCCTGGGCAAGATCATCAACACCCCGAGGTGGTCAAGGGTCTAC
ATCGGCTCCTTCTGGTCCACCCGCTCCTCATCCCCGACAACCGCAAGCTCTTTGAGGCCGAGGAGCAG
GACCTTTC AAGGACATCCAGTCACTGCCCCGAAACGCCGCCCTCAGGAAGCTCAATGACCTGATCAAG
CGGGCACGGCTGGCAAGGTTACGCGCTACATCATCAGCTCCCTCAAGAAAGAGATGCCCAATGTCTTT
GGTAAAGAGAGCAAAAAGAAAGAGCTGGTGAACAACCTGGGAGAGATCTACCAGAAGATTGAGCGCGAG
CACCAGATCTCCCTGGGACTTCCCGAGCCTCCGCAAGATGCAGGAACCTCCTGCAGACCCAGGACTTC
AGCAAGTCCAGGCGCTGAAGCCCAAGCTGTGGACACGGTGGATGACATGCTGGCAACGACATCGCG
CGGCTGATGGTGTGGTGGCGGAGGAGGAGTCCCTGATGCCTTCCAGGTGGTCAAGGGCGGCCCTTT
GACGGCACCATGAACGGGCCGTTCCGGGACGGCTACGGCGAGGGGGCCGGCGAGGGCATCGACGAGGTG
GAGTGGGTGGTGGCAAGGACAAGCCACCTACGACGAGATCTTCTACACGCTGTCCCCTGTCAACGGC
AAGATCACGGGCGCAACGCCAAGAAGGAGATGGTGAAGTCCAAGCTCCCCAACCCGCTGCTAGGGAAG
ATCTGGAAGTGGCCGACGTGGACAAGGACGGGCTGCTGGACGACGAGGAGTTCGCGCTGGCCAACCAC
CTCATCAAGGTCAAGCTGGAGGGCCACGAGCTGCCCGCCGACCTGCCCCGACCTGGTGGCCGCTCC
AAGCGCAGACATGAG
AGCGGACCGACGCGTACGCGGCCGCTCGAG - GFP Tag - GTTTAAAC
  
```

Protein Sequence:

>Peptide sequence encoded by RG238761
 Blue=ORF Red=Cloning site Green=Tag(s)

```

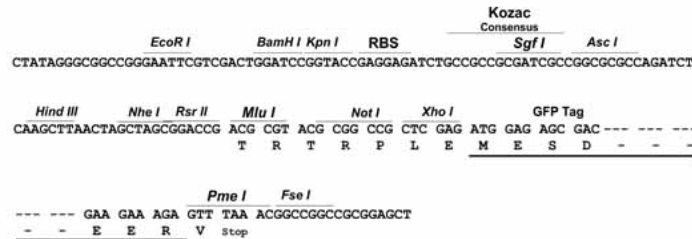
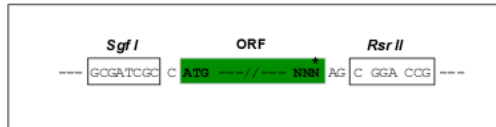
MFSWVSKDARRKKEPELFQTVAEGLRQLYAQKLLPLEEHYRFHEFHSPALEDADFDNKPMVLLVGQYST
GKTTFFIRHLIEQDFPGRIGPEPTTDSFIAMHGPTTEGVVPGNALVVDPRRPFKLNAFGNALNRFMC
AQLPNPVLDSISIIDTPGILSGEKQRISRGYDFAAVLEWFAERVDRIILLFDAHKLDISDEFSEVIKAL
KNHEDKIRVVLNKADQIETQQLMRVYGALMWSLGIINTPEVVRVYIGSFWSHPLLIIPDNRKLFEEEQ
DLFKDIQSLPRNAALRKLNDLIKRRARLAKVHAYIISLKKEMPNVFGKESKKKELVNNLGEIYQKIERE
HQISPGDFPSLRKMQELLQTQDFSKFQALKPKLLDVTDDMLANDIARLMVMVRQEESLMPSQVVKGGAF
DGTMNGPFHG YGEGAGEIDDVEWVVGKDKPTYDEIFYTLSPVNGKITGANAKKEMVSKLPNTVLGK
IWKLADVDDKGLLDDEEFALANHLIKVKLEGHELPA DLPHLVPSPKRRHE
SGPTRTRPLEMESDESGLPAMEIECRITGTLNGVEFELVGGGEGTPEQGRMTNKMSTKGALTFSPYLL
SHVMGYGFYHFGTYPSTYENPFLHAINNGGYTNTRIEKYEDGGVLVHSFSYRYEAGRVI GDFKVMGTGF
PEDSVIFTDKIIRS NATVEHLHPMGDNDLDGSFTRTFSLRDGGYSSVVD SHMHFKSAIHPSILQNGGP
MFAFRRVEEDHSNTELGIVEYQHAFKTPDADAGEERV
  
```

Restriction Sites:

Sgfl-RsrII

Cloning Scheme:

Cloning sites used for ORF Shuttling:


ACCN: NM_001282444

ORF Size: 1602 bp

OTI Disclaimer: The molecular sequence of this clone aligns with the gene accession number as a point of reference only. However, individual transcript sequences of the same gene can differ through naturally occurring variations (e.g. polymorphisms), each with its own valid existence. This clone is substantially in agreement with the reference, but a complete review of all prevailing variants is recommended prior to use. [More info](#)

OTI Annotation: This clone was engineered to express the complete ORF with an expression tag. Expression varies depending on the nature of the gene.

Components: The ORF clone is ion-exchange column purified and shipped in a 2D barcoded Matrix tube containing 10ug of transfection-ready, dried plasmid DNA (reconstitute with 100 ul of water).

RefSeq: [NM_001282444.1](#), [NP_001269373.1](#)
RefSeq Size: 3676 bp

RefSeq ORF: 1605 bp

Locus ID: 10938

UniProt ID: [Q9H4M9](#)
Cytogenetics: 11q13.1

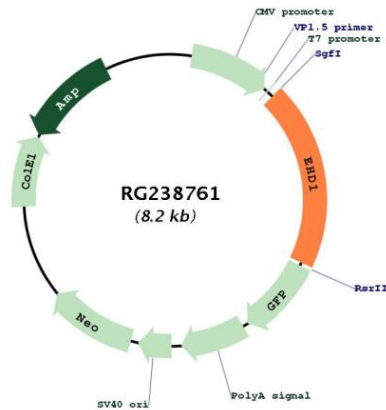
Protein Families: Druggable Genome

Protein Pathways: Endocytosis

MW: 61.1 kDa

Gene Summary:

This gene belongs to a highly conserved gene family encoding EPS15 homology (EH) domain-containing proteins. The protein-binding EH domain was first noted in EPS15, a substrate for the epidermal growth factor receptor. The EH domain has been shown to be an important motif in proteins involved in protein-protein interactions and in intracellular sorting. The protein encoded by this gene is thought to play a role in the endocytosis of IGF1 receptors. Alternatively spliced transcript variants have been found for this gene. [provided by RefSeq, Sep 2013]

Product images:


Circular map for RG238761