

Product datasheet for **RG238754**

DRP1 (DNM1L) (NM_001278466) Human Tagged ORF Clone

Product data:

Product Type:	Expression Plasmids
Product Name:	DRP1 (DNM1L) (NM_001278466) Human Tagged ORF Clone
Tag:	TurboGFP
Symbol:	DNM1L
Synonyms:	DLP1; DRP1; DVLP; DYMPLE; EMPF; EMPF1; HDYNIV; OPA5
Mammalian Cell Selection:	Neomycin
Vector:	pCMV6-AC-GFP (PS100010)
E. coli Selection:	Ampicillin (100 ug/mL)



[View online »](#)

ORF Nucleotide Sequence:

>RG238754 representing NM_001278466.
 Blue=ORF Red=Cloning site Green=Tag(s)

```
GCTCGTTAGTGAACCGTCAGAATTTTGTAAACGACTCACTATAGGGCGGCCGGGAATTCGTGCGACTG
GATCCGGTACCGAGGAGATCTGCCGCCCGCATCGCC
ATGTTTCAAGAAGATAAACGGAAAACAACAGGAGAAGAAAATGACCCTGCTACATGGAAAACTCAA
GACACCTTTCTAAAGGGGTGGAAGCAGAAGATGGGGTAAATTTCTTACACCAAAAAATAAGGAGCCAG
CTAGATATTAACAACAAGAAGAGTGAACTGATTCAATCCGTGATGAGTATGCTTTTCTCAAAGAAA
TATCCATCTCTGGCCAATAGAAATGGAACAAAGTATCTTGCTAGGACTCTAAACAGGTTACTGATGCAT
CACATCAGAGATTGTTTACCAGAGTTGAAAAACAAGAATAAATGTTCTAGCTGCTCAGTATCAGTCTCTT
CTAAATAGCTACGGTGAACCCGTGGATGATAAAAGTGCTACTTTACTCCAATTATTACCAAATTTGCC
ACAGAATATTGTAACACTATTGAAGGAAGTCAAAAATATATTGAACTTCGGAGCTATGCGGTGGTGTCT
AGAATTTGTTATATTTCCATGAGACTTTTGGCGAACCTTAGAATCTGTTGATCCACTTGGTGGCCTT
AACACTATTGACATTTTACTGCCATTAGAAATGCTACTGGTCTCGTCTGCTTTATTTGTGCCTGAG
GTTTCATTTGAGTTACTGGTGAAGCGGCAATCAAACGCTAGAAGAGCCAGCCTCCGCTGTGTGGAA
CTGGTTCATGAGGAAATGCAAAGGATCATTAGCACTGTAGCAATTACAGTACACAGGAATTGTTACGA
TTTCTAAACTTCATGATGCCATAGTTGAAGTGGTACTTGTCTTCTCGTAAAAGGTTGCCTGTTACA
AATGAAATGGTCCATAACTTAGTGGCAATTGAACTGGCTTATATCAACACAAAACATCCAGACTTTGCT
GATGCTTGTGGGCTAATGAACAATAATATAGAGGAACAAAGGAGAAAACAGGCTAGCCAGAGAATTACCT
TCAGCTGTATCACGAGACAAGTCTTCTAAAGTTCCAAGTCTTTGGCACCTGCCTCCAGGAGCCCTCC
CCCCTGCTTCTGCTGAGGCTGATGGCAAGTTAATTCAGGACAGCAGAAGAGAACTAAAAATGTTGCA
TCTGGAGGTGGTGGGTTGGAGATGGTGTTCAGAAACCAACCAGGCAACTGGAGGGAATGCTGAAA
ACTTCAAAGCTGAAGAGTTATTAGCAGAAGAAAAATCAAACCATTCCAATTATGCCAGCCAGTCCA
CAAAAAGGTCATGCCGTGAACCTGTAGATGTGCCAGTTCTGTTGCACGAAAACATCTGCTCGGGAA
CAGCGAGATTGTGAGTTATTGAACGACTCATTAAATCATATTTTCTCATTGTCAGAAAAGAAATTTCAA
GACAGTGTGCCAAAGGCAGTAATGCATTTTTTGGTTAATCATGTGAAAGACACTTTCAGAGTGAGCTA
GTAGGCCAGCTGTATAAATCATCCTTATTGGATGATCTTCTGACAGAATCTGAGGACATGGCACAGCGC
AGGAAAGAAGCAGCTGATATGCTAAAGGCATTACAAGGAGCCAGTCAAATTATTGCTGAAATCCGGGAG
ACTCATCTTTGG
ACGCGTACGCGGCCGCTCGAG – GFP Tag – GTTTAAAC
```

Protein Sequence:

>Peptide sequence encoded by RG238754
 Blue=ORF Red=Cloning site Green=Tag(s)

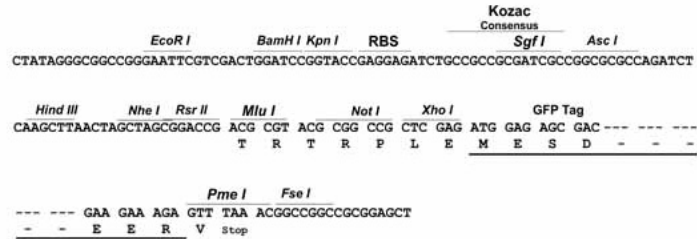
```
MFHKKINGKQEQKMTLLHGKTQDTFLKGWKQKNGVNFPTPKIRSQLDINNKKSVTDSIRDEYAFLLQKK
YPSLANRNGTKYLARTLNRLMHHIRDCLPELKTRINVLAAQYQSLLSYGEVDDKSATLLQLITKFA
TEYCNLTIEGTAKYIETSELGGARICYIFHETFGRTLESVDPLGGLNTIDILTAIRNATGPRPALFVPE
VSFELLVKRQIKRLEEPSLRCVELVHEEMQRIIQHCSNYSTQELLRFPKLHDAIVEVVTCLLRKRLPVT
NEMVHNLVAIELAYINTKHPDFADACGLMNNNIEEQRRNRLARELPSAVSRDKSSKVPSALAPASQEPS
PAASAEADGKLIQDSRRETKNVASGGGVGDGVQEPTTGNWRGMLKTSKAEELLAEKSKPIPIMPASP
QKGHAVNLLDVPVPVARKLSAREQRDCEVIERLIKSYFLIVRKNIQDSVPKAVMHFLVNHVKDTLQSEL
VGQLYKSSLLDDLLTESDMAQRRKEAADMLKALQGASQIIAEIRETHLW
TRTRPLEMESDESGLPAMEIECRITGTLNGVEFELVGGGEGTPEQGRMTNKMKSTKGALTFSPYLLSHV
MGYGFYHFTYPSGYENPFLHAINNGGYNTRIEKYEDGGVLHVSFSYRYEAGRVIGDFKVMGTGFPEP
SVIFTDKIIIRSNATVEHLHPMGDNDLDGSFTRTFLRDGGYSSVVDSHMHFKSAIHPSILQNGGPMFA
FRRVEEDHSNTELGIVEYQHAFKTPDADAGEERV
```

Restriction Sites:

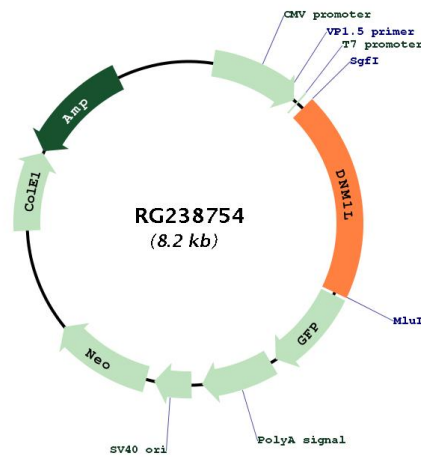
Sgfl-MluI

Cloning Scheme:

Cloning sites used for ORF Shutting:



Plasmid Map:



ACCN:	NM_001278466
ORF Size:	1599 bp
OTI Disclaimer:	The molecular sequence of this clone aligns with the gene accession number as a point of reference only. However, individual transcript sequences of the same gene can differ through naturally occurring variations (e.g. polymorphisms), each with its own valid existence. This clone is substantially in agreement with the reference, but a complete review of all prevailing variants is recommended prior to use. More info
OTI Annotation:	This clone was engineered to express the complete ORF with an expression tag. Expression varies depending on the nature of the gene.
Components:	The ORF clone is ion-exchange column purified and shipped in a 2D barcoded Matrix tube containing 10ug of transfection-ready, dried plasmid DNA (reconstitute with 100 ul of water).
RefSeq:	NM_001278466.1 , NP_001265395.1
RefSeq Size:	4211 bp
RefSeq ORF:	1602 bp
Locus ID:	10059
UniProt ID:	O00429
Cytogenetics:	12p11.21
Protein Pathways:	Endocytosis, Fc gamma R-mediated phagocytosis
MW:	60.5 kDa
Gene Summary:	This gene encodes a member of the dynamin superfamily of GTPases. The encoded protein mediates mitochondrial and peroxisomal division, and is involved in developmentally regulated apoptosis and programmed necrosis. Dysfunction of this gene is implicated in several neurological disorders, including Alzheimer's disease. Mutations in this gene are associated with the autosomal dominant disorder, encephalopathy, lethal, due to defective mitochondrial and peroxisomal fission (EMPF). Alternative splicing results in multiple transcript variants encoding different isoforms. [provided by RefSeq, Jun 2013]