

Product datasheet for **RG238734**

ENTPD3 (NM_001291960) Human Tagged ORF Clone

Product data:

Product Type:	Expression Plasmids
Product Name:	ENTPD3 (NM_001291960) Human Tagged ORF Clone
Tag:	TurboGFP
Symbol:	ENTPD3
Synonyms:	CD39L3; HB6; NTPDase-3
Mammalian Cell Selection:	Neomycin
Vector:	pCMV6-AC-GFP (PS100010)
E. coli Selection:	Ampicillin (100 ug/mL)



[View online »](#)

ORF Nucleotide Sequence:

>RG238734 representing NM_001291960.
 Blue=ORF Red=Cloning site Green=Tag(s)

```
GCTCGTTTAGTGAACCGTCAGAATTTTGTAAACGACTCACTATAGGGCGGCCGGGAATTCGTGCGACTG
GATCCGGTACCGAGGAGATCTGCCGCCCGGATCGCC
ATGTTCACTGTGCTGACCCGCCAACCATGTGAGCAAGCAGGCCTCAAGGCCCTTACCGAACTCCAACC
ATCATTGCCTTGGTGGTCTTGTGTGAGTATTGGTACTTGTGAGTACTACTGTCATCCAGATCCAC
AAGCAAGAGGTCCTCCCTCCAGGACTGAAGTATGGTATTGTGCTGGATGCCGGGTCTTCAAGAACCACA
GTCTACGTGTATCAATGGCCAGCAGAAAAAGAGAATAATACCGGAGTGGTCAGTCAAACCTTCAAATGT
AGTGTGAAAGGCTCTGGAATCTCCAGCTATGGAATAACCCCAAGATGTCCCAGAGCCTTTGAGGAG
TGTATGCAAAAAGTCAAGGGGCAGGTTCCATCCCACCTCCACGGATCCACCCCAATTCACCTGGGAGCC
ACGGCTGGGATGCGCTTGTGAGGTTGCAAAATGAAACAGCAGCTAATGAAGTCTTGAAAGCATCCAA
AGCTACTTCAAGTCCCAGCCCTTGACTTTAGGGGTGCTCAAATCATTCTGGGCAAGAAGAAGGGGTA
TATGGATGGATTACAGCCAATTTAATGGGAAATTTCTGGAGAAGAACCTGTGGCACATGTGGGTG
CACCCGCATGGAGTGAAACCACGGGTGCCCTGGACTTAGTGGTGCCTCCACCCAAATATCCTTCTGTG
GCAGGAGAGAAGATGGATCTGAACACCAGCGACATCATGCAGGTGCCCTGTATGGCTACGTATACACG
CTCTACACACACAGCTTCCAGTGTATGGCCGGAATGAGGCTGAGAAGAAGTTTCTGGCAATGCTCCTG
CAGAATTTCTCTACAAAAACCATCTACCAATCCCTGTTACCCTCGGGATTATAGCATCAGCTTACC
ATGGGCCATGATTTGATAGCCTGTGACTGTGGACCAGAGGCCAGAAAGTTATAACCCCAATGATGTC
ATCACTTTTGAAGGAAGTGGGGACCCATCTCTGTGTAAGGAGAAGGTGGCTTCCATATTTGACTTCAA
GCTTGCATGATCAAGAAACCTGTTCTTTGATGGGGTTATCAGCCAAAGATTAAGGGCCATTTGTG
GCTTTTGCAGGATTCTACTACACAGCCAGTGTAAATCTTTCAGGTAGCTTTTCCCTGGACACCTTC
AACTCCAGCACCTGGAATTTCTGCTCACAGAATTGGAGTCAGTCCCCTCCCAATTTGAT
GAGGTATATGCCGCTCTTACTGCTTCTCAGCCAACATACATCTACCACTGTTTGTGAACGGTTACAAA
TTCACAGAGGAGACTTGGCCCAATACACTTTGAAAAAGAAAGTGGGGAATAGCAGCATAGCCTGGTCT
CTTGGCTACATGCTCAGCCTGACCAACCAGATCCCAGCTGAAAGCCCTCTGATCCGTCTGCCATAGAA
CCACCTGTCTTTGTGGGCACCCTCGCTTCTTACAGCGGCAGCCTTGTGTGTCTGGCATTCTTGCA
TACCTGTGTTAGCAACCAGAAGAAAGAGGCACTCCGAGCATGCCTTTGACCATGCAGTGGATTCTGAC
ACGCGTACGCGGCCGCTCGAG - GFP Tag - GTTAAAC
```

Protein Sequence:

>Peptide sequence encoded by RG238734
 Blue=ORF Red=Cloning site Green=Tag(s)

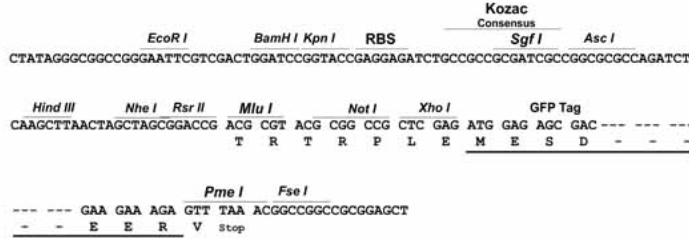
```
MFTVLTRQPCEQAGLKALYRTPTIIALVLLVSIIVLVSITVIQIHKQEVLPGLKYGIVLDAGSSRTT
VYVYQWPAEKENNTGVVSTFKCSVKSGISSYGNNPQDVPRAFEECMQKVKGQVPSHLHGSTPIHLGA
TAGMRLRLQNETAANEVLESIQSYFKSQPFDFRGAQIIISGQEEGVYGWITANYLMGNFLEKNLWHMWV
HPHGVEITGALDLGGASTQISFVAGEKMDLNTSDIMQVSLYGYVYTLYTHSFQCYGRNEAEKFLAMLL
QNSPTKNHLTNPYPRDYSISFTMGHVFDLCTVDQRPESYNPNVDVITFEGTGDPSLCKEKVASIFDFK
ACHDQETCSFDGYYQPKIKGPFVAFAGFYTASALNLSGSFSLDTFNSSTWNFCSQNWSQLPLLLPKFD
EYARSYCFSANIYHLFVNGYKFTEETWPQIHFEKEVGNSSIAWSLGYMLSLTNQIPAESPLIRLPIE
PPVFVGLAFFTAAALLCLAFLAYLCSATRRKRHSEHAFDHAVDSD
TRTRPLEMESDESGLPAMEIECRITGTLNGVEFELVGGEGTPEQGRMTNKMSTKGALTFSPYLLSHV
MGYGFYHFGTYPSGYENPFLHAINNGYNTRIEKYEDGGVLHVSFSYRYEAGRVIGDFKVMGTGFPED
SVIFTDKIIRSNATVEHLHPMGDNDLGSFTRTFLRDGGYSSVVDSHMHFKSAIHPSILQNGGPMFA
FRRVEEDHSNTELGIVEYQHAFKTPDADAGEERV
```

Restriction Sites:

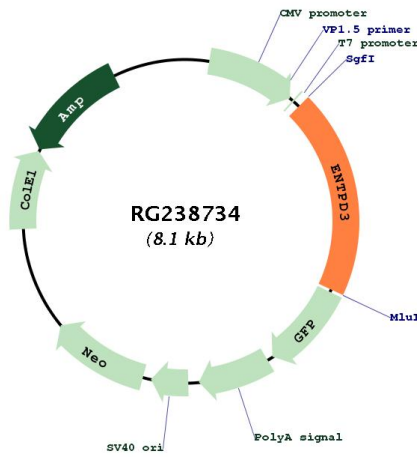
Sgfl-RsrII

Cloning Scheme:

Cloning sites used for ORF Shuttling:



Plasmid Map:



ACCN:	NM_001291960
ORF Size:	1587 bp
OTI Disclaimer:	The molecular sequence of this clone aligns with the gene accession number as a point of reference only. However, individual transcript sequences of the same gene can differ through naturally occurring variations (e.g. polymorphisms), each with its own valid existence. This clone is substantially in agreement with the reference, but a complete review of all prevailing variants is recommended prior to use. More info
OTI Annotation:	This clone was engineered to express the complete ORF with an expression tag. Expression varies depending on the nature of the gene.
Components:	The ORF clone is ion-exchange column purified and shipped in a 2D barcoded Matrix tube containing 10ug of transfection-ready, dried plasmid DNA (reconstitute with 100 ul of water).
RefSeq:	NM_001291960.2
RefSeq Size:	2867 bp
RefSeq ORF:	1590 bp
Locus ID:	956
UniProt ID:	O75355
Cytogenetics:	3p22.1
Protein Families:	Transmembrane
Protein Pathways:	Purine metabolism, Pyrimidine metabolism
MW:	59.6 kDa
Gene Summary:	This gene encodes a plasma membrane-bound divalent cation-dependent E-type nucleotidase. The encoded protein is involved in the regulation of extracellular levels of ATP by hydrolysis of it and other nucleotides. Multiple transcript variants have been described. [provided by RefSeq, May 2014]