

Product datasheet for **RG238693**

IRX4 (NM_001278634) Human Tagged ORF Clone

Product data:

Product Type:	Expression Plasmids
Product Name:	IRX4 (NM_001278634) Human Tagged ORF Clone
Tag:	TurboGFP
Symbol:	IRX4
Synonyms:	IRXA3
Mammalian Cell Selection:	Neomycin
Vector:	pCMV6-AC-GFP (PS100010)
E. coli Selection:	Ampicillin (100 ug/mL)



[View online »](#)

ORF Nucleotide Sequence:

>RG238693 representing NM_001278634.
 Blue=ORF Red=Cloning site Green=Tag(s)

```
GCTCGTTTAGTGAACCGTCAGAATTTTGTAAACGACTCACTATAGGGCGGCCGGGAATTCGTGACTG
GATCCGGTACCGAGGAGATCTGCCGCCCGGATCGCC
ATGTCCTACCCGAGTTTGGATACCCCTACTCCTCGGCTCCCCAGTTCTTGATGGCCACCAACTCCCTG
AGCACGTGCTGCGAGTCCGGAGGCCGACGCTGGCGGACTCCGGGCCCGCCGCTCGGCCAGGCGCCG
GTCTACTGCCCGGTCTACGAGAGCCGGCTGCTGGCCACCGCGGCCACGAGCTCAACTCGGCCCGCGCG
CTGGGCGTCTATGGGGTCCCTATGGCGGATCGCAGGGCTATGGCAACTACGTGACCTACGGCTCGGAG
GCGTCCGCTTCTACTCGCTGAACAGCTTTGATTCCAAGGATGGTTCGGGATCTGCGCATGGGGGCTG
GCACCAGCCGCTGCCCTACTACCTTACGAGCCAGCTCTGGCCAGTACCCCTATGACAGGTATGGA
ACCATGGACAGCGGCACGCGGCCAAGAACGCCACGCGGAGACCACCAGCACGCTCAAGGCTGGCTG
CAGGAGCACCGCAAGAACCCTACCCACCAAGGGCGAGAAGATCATGCTGGCCATCATACCAAGATG
ACCCTCACACAGGTCTCCACTGGTTCGCCAACGCGCGCCGGCGCCTCAAGAAGGAGAACAAGATGACG
TGGCCCGCGGAAACAAGTGCAGACGAGAAGCGGCCCTACGCGGAGGGCGAGGAGGAGGGGGGC
GAGGAGGAGGCGGGAGGAGCCCTCAAGAGCTCCAAGAACGCAGAGCCGTGGGCAAAGAGGAGAAG
GAGCTGGAGCTTAGTGACTTGGACGACTTCGACCCGCTGGAAGCAGAGCCGCCGGCGTGGAGCTGAAG
CCGCCCTTCCACTCCCTGGACGGCGGTCTGGAGCGCTCCCCGCCGCGCCGACGGCCCGGTCAAGGAG
GCCTCAGGCGCGCTCCGATGTCTTGGCCGCGGGTGGCGGAGCTGCTCTGGACGAGGACCTGGAGAGG
GCCCGGAGCTGTCTCCGACGCGCGCGCGCGGGCCGGAGCCACTGCCGGGCGCAGAGGGCGGCCCTCAG
GTCTGCGAGGCCAAGCTGGGTTTGTGCCGGCGGGGGCGTCCGACGGCTGGAGGCTAAGCCGCGCATC
TGGTCCCTGGCCACACAGCCACCGCCGCGCCGCCGCCACCTCCCTGAGCCAGACTGAGTTTCCG
TCTGTGGCCCTTCCCACTCTGGCGCCCTGGACAGGCACAGGACTCCCCGGTAACCACTCAGAAAC
TGGGTGGACGGGTCTTCCACGACCCCATCCTCAGGCACAGCACTTTGAACCAGGCTGGGCCACCGCC
AAGGGCGCCCTCTGGACCCCGGCTCTGGGACGCTCGCTGGGGGCGGGCGCAACGTGCTGACTGCA
CCCCTGGCCCGCCTTCCGCTGCCGTGCCAGGACGCCAGCTGCAGGCGCGCCAGGGAGCTG
CTCGCCCTGCCAAGGCCGGGCAAACCTTCTGCGCC
ACGCGTACGCGGCCGCTCGAG - GFP Tag - GTTAAAC
```

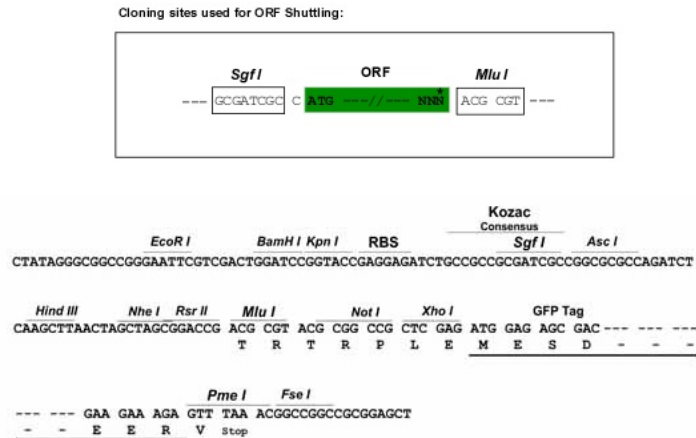
Protein Sequence:

>Peptide sequence encoded by RG238693
 Blue=ORF Red=Cloning site Green=Tag(s)

```
MSYPQFGYPYSSAPQFLMATNSLSTCCESGGRTLADSGPAASAQAPVYCPVYESRLLATARHELNSAAA
LGVYGGPYGGSQGYGNYVTYGSEASAFYSLNSFDSKDGSGSAHGLAPAAAAAYPYEPALGQYPYDRYG
TMDSGTRRKNATRETTSTLKAWLQHRKNPYPTKGEKIMLAIITKMTLTQVSTWFANARRLKKENKMT
WPPRNKCADEKRPYAEGEIEEGEIEAREEPLKSSKNAEPVGGKEKELELSDLDDFDPLEAEPACELK
PPFHSLDGLERVPAAPDGPVKEASGALRMSLAAGGGAALDEDLERARSLRSAAAGPEPLPGAEGGPQ
VCEAKLGFVPAGASAGLEAKPRIWLSLAHTATAAAAAATLSQTEFPCMLKRQGPAAAPAVSSAPATSP
SVALPHSGALDRHQDSPVTSLRNWVDGVFHDPILRHSTLNQAWATAKALLDPGPLGRSLGAGANVLTAL
PLARAFPPAVPQDAPAAGAARELLALPKAGGKPFCA
TRTRPLEMESDESGLPAMEIECRITGTLNGVEFELVGGGEGTPEQGRMTNKMSTKGALTFSPYLLSHV
MGYGFYHFGTYPYSGYENPFLHAINNGGYNTRIEKYEDGGVLHVSFSYRYEAGRVIGDFKVMGTGFPED
SVIFTDKIIRSNATVEHLHPMGDNDLDGSFTRTFLRDGGYSSVVDSHMHFKSAIHPSILQNGGPMFA
FRRVEEDHSNTELGIVEYQHAFKTPDADAGEERV
```

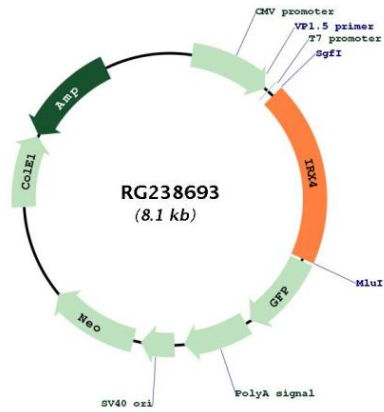
Restriction Sites:

Sgfl-Mlul

Cloning Scheme:


- ACCN:** NM_001278634
- ORF Size:** 1557 bp
- OTI Disclaimer:** The molecular sequence of this clone aligns with the gene accession number as a point of reference only. However, individual transcript sequences of the same gene can differ through naturally occurring variations (e.g. polymorphisms), each with its own valid existence. This clone is substantially in agreement with the reference, but a complete review of all prevailing variants is recommended prior to use. [More info](#)
- OTI Annotation:** This clone was engineered to express the complete ORF with an expression tag. Expression varies depending on the nature of the gene.
- Components:** The ORF clone is ion-exchange column purified and shipped in a 2D barcoded Matrix tube containing 10ug of transfection-ready, dried plasmid DNA (reconstitute with 100 ul of water).
- RefSeq:** [NM_001278634.2](#)
- RefSeq Size:** 2333 bp
- RefSeq ORF:** 1560 bp
- Locus ID:** 50805
- UniProt ID:** [P78413](#)
- Cytogenetics:** 5p15.33
- MW:** 54.9 kDa
- Gene Summary:** Likely to be an important mediator of ventricular differentiation during cardiac development. [UniProtKB/Swiss-Prot Function]

Product images:



Circular map for RG238693