

## Product datasheet for **RG238672**

### ZNF83 (NM\_001277948) Human Tagged ORF Clone

#### Product data:

Product Type:	Expression Plasmids
Product Name:	ZNF83 (NM_001277948) Human Tagged ORF Clone
Tag:	TurboGFP
Symbol:	ZNF83
Synonyms:	HPF1; ZNF816B
Mammalian Cell Selection:	Neomycin
Vector:	pCMV6-AC-GFP (PS100010)
E. coli Selection:	Ampicillin (100 ug/mL)



[View online »](#)

**ORF Nucleotide Sequence:**

>RG238672 representing NM\_001277948.  
 Blue=ORF Red=Cloning site Green=Tag(s)

```
GCTCGTTTAGTGAACCGTCAGAATTTTGTAAACGACTCACTATAGGGCGGCCGGGAATTCGTGCGACTG
GATCCGGTACCGAGGAGATCTGCCGCCGCGATCGCC
ATGCATGGGAGAAAGGATGATGCACAAAAGCAGCCTGTAAAAATCAGCTTGGATTAACCCCGCAGTCA
CATCTACCAGAAGTGCAGCTATTTCAAGCTGAAGGAAAAATATAAAATATGATCACATGGAAAAATCT
GTCAACAGTAGTTCCCTTAGTTTCCACACCCAAGTATTTCTTCTACTGTCAAAACCCACATTTCTCAT
ACATATGAATGTAATTTTGTGGATTCATTATTCACACAAAAGAGAAAAGCAAATATTGGGACAGAACAC
TACAAATGTAGTGAGCGTGGCAAGGCCTTTCATCAAGGCTTACATTTTACTATACATCAAATAATCCAT
ACTAAAGAGACGCAATTTAAATGTGATATATGTGGCAAGATCTTCAATAAAAAATCAAACCTTGCAAGT
CATCAAAGAATTCATACTGGAGAGAAGCCATATAAATGTAATGAATGTGGCAAGGCTTCCATAATATG
TCACACCTTGACAGCATCGCAGGATTCATACTGGAGAGAAACCATATAAATGTAATGAATGTGGCAAG
GTCTTTAATCAAATTTACACCTTGACAAACATCAAAGAATTCATACCGGAGAGAAACCTTATAAATGT
AATGAATGTGGAAAGGTCTTCCATCAAATTTACACCTTGACAAACATCGGACAATTCATACTGGAGAA
AAACCTTACGAATGTAACAAATGTGGCAAGGTGTCAGTCGCAATTCCTACCTTGTACAACATCTGATC
ATTCATACTGGAGAGAAACCTTACAGATGTAATGTATGTGGAAAGGTCTTCCATCATATTTACACCTT
GCACAACATCAGAGAATCCACACTGGAGAGAAACCTTACAAATGTAATGAGTGTGGCAAGGTCTTCACT
CACAAGTCATCCCTAGTAAATCACTGGAGAATTCATACTGGAGAGAAACCTTACAAATGTAATGAGTGT
GGCAAGGTCTTCACTCACAAGTCATCCCTAGTAAATCACTGGAGAATCCACACTGGAGAGAAACCTTAC
AAATGTAATGAATGTGGCAAGGTCTTCACTCGCAATTCATACCTTGCCCAACATCTGATAATTCATGCC
GGTGAGAAACCTTATAAGTGTGATGAATGTGACAAAGCATTGAGTCAAAATTCACATCTTGTACAACAT
CACAGAATCCATACTGGAGAGAAACCTTACAAATGTGATGAATGTGGCAAGGTCTTCACTCAAATTCAT
TACCTTGATATCATTGGAGAATTCATACTGGAGAGAAAGCTTATAAATGTAATGAATGTGGGAAGGTC
TTCGGTCTAAACTCATCCCTAGCACATCATCGGAAAATTCACACTGGAGAGAAACCTTCAAATGTAAT
GAATGTGGCAAAGCTTTTAGTATGCGTTCAAGCCTCACTAATCATCATGCGATCCACACTGGAGAGAAA
CATTTCAAATGTAATGAATGTGGCAAACCTTCCGCGACAATTCATATCTGTACGTCATCAGAGATTT
CATGCCGGAAGAAATCTAACACATGTAAT
ACGCGTACGCGGCCGCTCGAG – GFP Tag – GTTAAAC
```

**Protein Sequence:**

>Peptide sequence encoded by RG238672  
 Blue=ORF Red=Cloning site Green=Tag(s)

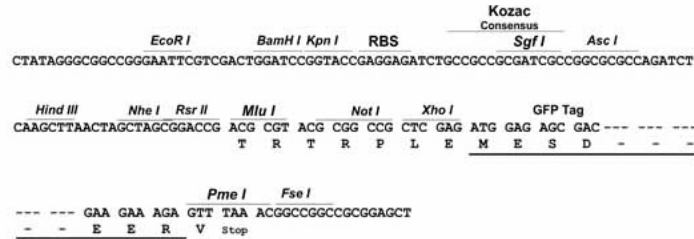
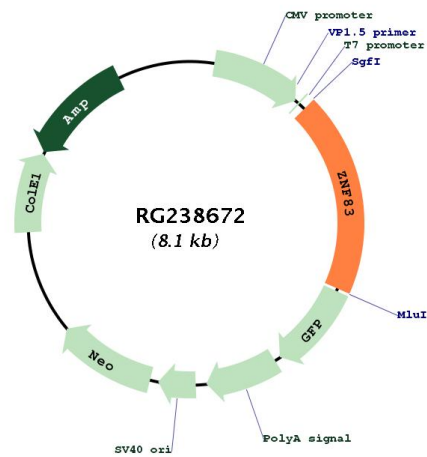
```
MHGRKDDAQKQPVKNQLGLNPQSHLPELQLFQAEGKIYKYDHMEKSVNSSSLVSPQRISSVTKTHISH
TYECNFVDSLFTQKEKANIIGTEHYKCSERGFHQLHFTHQIHTKETQFKCDICGKIFNKSNLAS
HQRHTGEKPYKCNECGKVFHNMSHLAQHRIHTGEKPYKCNECGKVFNQISHLAQHRIHTGEKPYKC
NECGKVFHQISHLAQHRIHTGEKPYECNKCGKVFSRNSYLQHLIHTGEKPYRCNVCGKVFHHISHL
AQHRIHTGEKPYKCNECGKVFSHKSSLVNHRIHTGEKPYKCNECGKVFSHKSSLVNHRIHTGEKPY
KCNECGKVFSRNSYLQHLIHTGEKPYKDECDKAFSQNSHLVQHRIHTGEKPYKDECGKVFQNS
YLAYHWRHTGEKAYKCNECGKVFGLNSSLAHRKHTGEKPFKNECGKAFSMRSSLNHHAIHTGEK
HFKNECGKLFQDQSYLVRHQRFHAGKKSNTCN
TRTRPLEMESDESGLPAMEIECRITGTLNGVEFELVGGEGTPEQGRMTNKMSTKGALTFSPYLLSHV
MGYGFYHFGTYPSGYENPFLHAINNGYNTRIEKYEDGGVLHVSFSYRYEAGRVIGDFKVMGTGFPED
SVIFTDKIIRSNATVEHLHPMGDNDLDGSFTRTFLRDGGYSSVVDSHMHFKSAIHPSILQNGGPMFA
FRRVEEDHSNTELGIVEYQHAFKTPDADAGEERV
```

**Restriction Sites:**

Sgfl-MluI

**Cloning Scheme:**

Cloning sites used for ORF Shutting:

**Plasmid Map:**

<b>ACCN:</b>	NM_001277948
<b>ORF Size:</b>	1548 bp
<b>OTI Disclaimer:</b>	The molecular sequence of this clone aligns with the gene accession number as a point of reference only. However, individual transcript sequences of the same gene can differ through naturally occurring variations (e.g. polymorphisms), each with its own valid existence. This clone is substantially in agreement with the reference, but a complete review of all prevailing variants is recommended prior to use. <a href="#">More info</a>
<b>OTI Annotation:</b>	This clone was engineered to express the complete ORF with an expression tag. Expression varies depending on the nature of the gene.
<b>Components:</b>	The ORF clone is ion-exchange column purified and shipped in a 2D barcoded Matrix tube containing 10ug of transfection-ready, dried plasmid DNA (reconstitute with 100 ul of water).
<b>RefSeq:</b>	<a href="#">NM_001277948.1</a> , <a href="#">NP_001264877.1</a>
<b>RefSeq Size:</b>	2890 bp
<b>RefSeq ORF:</b>	1551 bp
<b>Locus ID:</b>	55769
<b>UniProt ID:</b>	<a href="#">P51522</a>
<b>Cytogenetics:</b>	19q13.41
<b>Protein Families:</b>	Transcription Factors
<b>MW:</b>	60.2 kDa
<b>Gene Summary:</b>	May be involved in transcriptional regulation.[UniProtKB/Swiss-Prot Function]