

Product datasheet for **RG238664**

IFNAR2 (NM_001289125) Human Tagged ORF Clone

Product data:

Product Type:	Expression Plasmids
Product Name:	IFNAR2 (NM_001289125) Human Tagged ORF Clone
Tag:	TurboGFP
Symbol:	IFNAR2
Synonyms:	IFN-alpha-REC; IFN-R; IFNABR; IFNARB; IMD45
Mammalian Cell Selection:	Neomycin
Vector:	pCMV6-AC-GFP (PS100010)
E. coli Selection:	Ampicillin (100 ug/mL)



[View online »](#)

ORF Nucleotide Sequence:

>RG238664 representing NM_001289125.
 Blue=ORF Red=Cloning site Green=Tag(s)

```
GCTCGTTTAGTGAACCGTCAGAATTTTGTAAACGACTCACTATAGGGCGGCCGGGAATTCGTGCGACTG
GATCCGGTACCGAGGAGATCTGCCGCCCGCATCGCC
ATGCTTTTGAGCCAGAATGCCTTCATCTTCAGATCACTTAATTTGGTTTCATGGTGTATATCAGCCTC
GTGTTTGGTATTTTCATATGATTGCCTGATTACACAGATGAATCTTGCACTTTCAAGATATCATTGCCG
AATTTCCGGTCCATCTTATCATGGGAATTAATAAACCACTCCATTGTACCAACTCACTATACATTGCTG
TATACAATCATGAGTAAACCAGAAGATTTGAAGGTGGTTAAGAAGTGTGCAAATACCACAAGATCATT
TGTGACCTCACAGATGAGTGGAGAAGCACACACGAGGCCTATGTCACCGTCTAGAAGGATTCAGCGGG
AACACAACGTTGTTCAAGTTGCTCACACAATTTCTGGCTGGCCATAGACATGTCTTTGAACCACCAGAG
TTTGAGATTGTTGGTTTTACCAACCACATTAATGTGATGGTGAATTTCCATCTATTGTTGAGGAAGAA
TTACAGTTTGATTATCTCTCGTCATTGAAGAACAGTCAGAGGGAATTGTTAAGAAGCATAAACCCGAA
ATAAAAGGAAACATGAGTGGAAATTTACCTATATCATTGACAAGTTAATCCAACACGAACTACTGT
GTATCTGTTTATTTAGAGCACAGTGATGAGCAAGCAGTAATAAAGTCTCCCTTAAATGCACCTCCTT
CCACCTGGCCAGGAATCAGAATCAGCAGAATCTGCCAAAATAGGAGGAATAATTACTGTGTTTTGATA
GCATTGGTCTTGACAAGCACCATAGTGACACTGAAATGGATTGGTTATATATGCTTAAGAAATAGCCTC
CCCAAAGTCTTGAATTTTCATACTTTTTCAGCTGGCCATTTCTAACCTGCCACCGTTGGAAGCCATG
GATATGGTGGAGGTCAATTACATCAACAGAAAGAAAGTGTGGGATTATAATTATGATGATGAAAGT
GATAGCGATACTGAGGCAGCGCCAGGACAAGTGGCGGTGGCTATACCATGCATGGACTGACTGTCAGG
CCTCTGGGTCAGGCCTCTGCCACCTCTACAGAATCCCAGTTGATAGACCCGGAGTCCGAGGAGGAGCCT
GACCTGCCTGAGGTTGATGTGGAGCTCCCACGATGCCAAGGACAGCCCTCAGCAGTTGGAACCTTG
AGTGGCCCTGTGAGAGGAGAAAGAGTCCACTCCAGGACCTTTTCCCGAAGAGGACTACAGCTCCACG
GAGGGGTCTGGGGCAGAAATACCTTCAATGTGGACTTAAACTCTGTGTTTTGAGAGTCTTGATGAC
GAGGACAGTGACGACTTAGAAGCCCTCTGATGCTATCGTCTCATCTGGAAGAGATGTTGACCCAGAG
GATCCTGATAATGTGCAATCAAACCATTGCTGGCCAGCGGGAAAGGACACAGCCAACCTTTCCAGC
CCCTCTCAGAGGCCTGTGGTCCGAAGATGCTCCATCTGATCAAAGTGACACTTCTGAGTCAGATGTT
GACCTTGGGGATGGTTATATAATGAGA
ACGCGTACGCGGCCGCTCGAG – GFP Tag – GTTAAAC
```

Protein Sequence:

>Peptide sequence encoded by RG238664
 Blue=ORF Red=Cloning site Green=Tag(s)

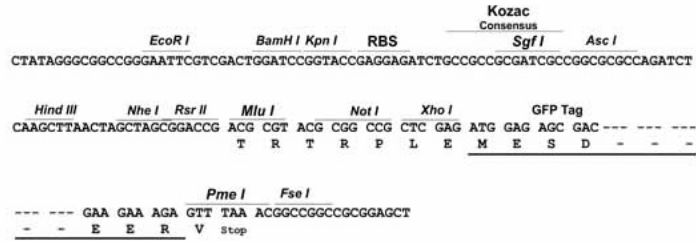
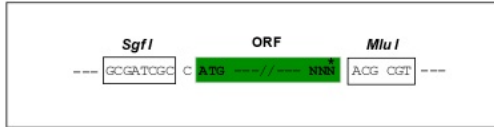
```
MLLSQNAFIFRSLNLVLMVYISLVFGISYDSPDYDESCTFKISLRNFRSILSWELKNHSIVPTHYLL
YTIMSKPEDLKVVKNCAANTTRSFCDLDEWRSTHEAYVTVLEGFSGNTTLFSCSHNFWLAIDMSFEPPE
FEIVGFTNHINVMVKFSPSIVEEELQFDLSLVIEEQSEGIKKKPEIKGNMSGNFYIIDKLIPTNYC
VSVYLEHSDEQAVIKSPLKCTLLPPGQESASAESAKIGGIITVFLIALVLTSTIVTLKWIGYICLRNSL
PKVLFNFHFLAWPFPNLPPLEAMDMEVYIYINRKKVWDYNYDDESDDTEAAPRTSGGGYTMHGLTVR
PLGQASATSTESQLIDPESEEPDLPEVDVLPMPKDSPPQLELLSGPCERRKSPLQDPFPEEDYSST
EGSGGRITFNVDLNSVFLRVLDDSDSDDLEAPLMLSSHLEEMVDPEDPDNVQSNHLLASGEGTQPTFPS
PSSEGLWSEDAPSDQSDTSESDVDLGDGYIMR
TRTRPLEMESDESGLPAMEIECRITGTLNGVEFELVGGGEGTPEQGRMTNKMSTKGALTFSPYLLSHV
MGYGFYHFGTYPSTYENPFLHAINNGGYNTRIEKYEDGGVLHVSFSYRYEAGRVIGDFKVMGTGFPED
SVIFTDKIIRSNATVEHLHPMGDNDLDGSFTRTFLRDGGYSSVVDSSHMHFKSAIHPSILQNGGPMFA
FRRVEEDHSNTELGIVEYQHAFKTPDADAGEERV
```

Restriction Sites:

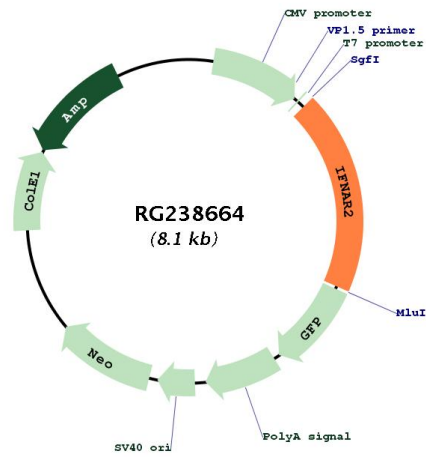
Sgfl-Mlul

Cloning Scheme:

Cloning sites used for ORF Shutting:



Plasmid Map:



ACCN:	NM_001289125
ORF Size:	1545 bp
OTI Disclaimer:	The molecular sequence of this clone aligns with the gene accession number as a point of reference only. However, individual transcript sequences of the same gene can differ through naturally occurring variations (e.g. polymorphisms), each with its own valid existence. This clone is substantially in agreement with the reference, but a complete review of all prevailing variants is recommended prior to use. More info
OTI Annotation:	This clone was engineered to express the complete ORF with an expression tag. Expression varies depending on the nature of the gene.
Components:	The ORF clone is ion-exchange column purified and shipped in a 2D barcoded Matrix tube containing 10ug of transfection-ready, dried plasmid DNA (reconstitute with 100 ul of water).
RefSeq:	NM_001289125.3
RefSeq Size:	2966 bp
RefSeq ORF:	1548 bp
Locus ID:	3455
UniProt ID:	P48551
Cytogenetics:	21q22.11
Protein Families:	Druggable Genome, Transmembrane
Protein Pathways:	Cytokine-cytokine receptor interaction, Jak-STAT signaling pathway, Natural killer cell mediated cytotoxicity, Toll-like receptor signaling pathway
MW:	57.8 kDa
Gene Summary:	The protein encoded by this gene is a type I membrane protein that forms one of the two chains of a receptor for interferons alpha and beta. Binding and activation of the receptor stimulates Janus protein kinases, which in turn phosphorylate several proteins, including STAT1 and STAT2. The protein belongs to the type II cytokine receptor family. Mutations in this gene are associated with Immunodeficiency 45. [provided by RefSeq, Jul 2020]