

Product datasheet for **RG238633**

PRAME (NM_001291716) Human Tagged ORF Clone

Product data:

Product Type:	Expression Plasmids
Product Name:	PRAME (NM_001291716) Human Tagged ORF Clone
Tag:	TurboGFP
Symbol:	PRAME
Synonyms:	CT130; MAPE; OIP-4; OIP4
Mammalian Cell Selection:	Neomycin
Vector:	pCMV6-AC-GFP (PS100010)
E. coli Selection:	Ampicillin (100 ug/mL)



[View online »](#)

ORF Nucleotide Sequence:

>RG238633 representing NM_001291716.
 Blue=ORF Red=Cloning site Green=Tag(s)

```
GCTCGTTTAGTGAACCGTCAGAATTTTGTAAACGACTCACTATAGGGCGGCCGGGAATTCGTGCGACTG
GATCCGGTACCGAGGAGATCTGCCGCCGCGATCGCC
ATGGAACGAAGGCGTTTGTGGGTTCCATTAGAGCCGATACATCAGCATGAGTGTGTGGACAAGCCCA
CGGAGACTTGTGGAGCTGGCAGGGCAGAGCTGCTGAAGGATGAGCCCTGGCCATTGCCGCCCTGGAG
TTGCTGCCAGGGAGCTCTCCCGCACTTTCATGGCAGCCTTTGACGGGAGACACAGCCAGACCCCTG
AAGGCAATGGTGCAGGCCTGGCCCTTCCCTGCCTCCCTCTGGGAGTGTGATGAAGGGACAACATCTT
CACCTGGAGACCTTCAAAGCTGTGCTTGTGACTTGTGTGCTCCTTGCCAGGAGGTTGCCCCAGG
AGGTGGAACTTCAAGTGTGATTTACGGAAGAACTCTCATCAGGACTTCTGGACTGTATGGTCTGGA
AACAGGGCCAGTCTGTACTATTCCAGAGCCAGAAGCAGCTCAGCCATGACAAAGAAGCGAAAAGTA
GATGGTTTGGACACAGAGGCAGAGCAGCCCTTTCATCCAGTAGAGGTGCTCGTAGACCTGTTCTCAAG
GAAGGTGCCTGTGATGAATTGTTCTCTACCTCATTGAGAAAGTGAAGCGAAAGAAAAATGACTACGC
CTGTGCTGTAAGAAGCTGAAGATTTTGAATGCCATGCAGGATATCAAGATGATCCTGAAAATGGTG
CAGCTGGACTCTATTGAAGATTTGGAAGTGAAGTGTACCTGGAAGCTACCCACCTTGGCGAAATTTCT
CCTTACCTGGGCCAGATGATTAATCTGCGTAGACTCCTCCTCTCCACATCCATGCATCTTCTACATT
TCCCCGGAGAAGGAAGAGCAGTATATCGCCAGTTCACCTCTCAGTTCCTCAGTCTGCAGTGCCTGCAG
GCTCTCTATGTGGACTCTTATTTTCTTAGAGGCCGCTGGATCAGTTGCTCAGGCACGTGATGAAC
CCCTTGGAAACCTCTCAATAACTAAGTCCCGCTTTCGGAAGGGGATGTGATGCATCTGTCCAGAGT
CCCAGCGTCAGTCAGTAAGTGTCTGAGTCTAAGTGGGTGATGCTGACCGATGTAAGTCCCAGAGCC
CTCCAAGCTCTGCTGGAGAGCCTCTGCCACCCTCCAGGACCTGGTCTTTGATGAGTGTGGGATCAG
GATGATCAGTCTTCCCTCCCTGCTCCCTGAGCCACTGCTCCAGCTTACGACCTTAAGCTTCTAC
GGGAATCCATCTCCATATCTGCCCTGCAGAGTCTCCTGCAGCACCTCATCGGGCTGAGCAATCTGACC
CACGTGCTGTATCCTGTCCCTGGAGAGTTATGAGGACATCCATGGTACCCTCCACCTGGAGAGCCTT
GCCTATCTGCATGCCAGGCTCAGGGAGTTGCTGTGTGAGTTGGGGCGGCCAGCATGGTCTGGCTTAGT
GCCAACCCCTGTCTCACTGTGGGGACAGAACCTTCTATGACCCGGAGCCATCTGTGCCCTGTTTC
ATGCCTAAT
ACGCGTACGCGGCCGCTCGAG – GFP Tag – GTTAAAC
```

Protein Sequence:

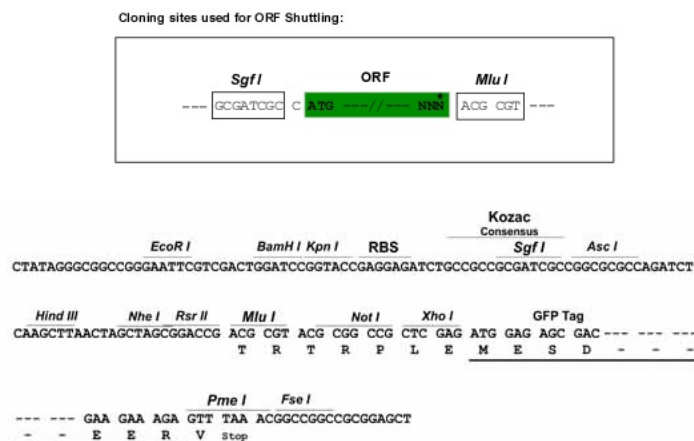
>Peptide sequence encoded by RG238633
 Blue=ORF Red=Cloning site Green=Tag(s)

```
MERRRLWGSIQSRYISMSVWTSRRLVELAGQSLKDEALIAALELLPRELFPPLFMAAFDGRHSQTL
KAMVQAWPFTCLPLGVLKMGQHLHLETFKAVLDGLDVLLAQEVRPRRWKLVLDLRKNSHQDFWTVWSG
NRASLYSFPPEAAQPMTKKRKVDGLSTAEQPFIPVEVLVDLFLKEGACDELFSYLIEKVRKKNVLR
LCCKKLIKIFAMPMDIKMILKMQVLDLSDIEDLEVTCTWKLPKAKFSPYLGQMINLRLLLSHIHASSYI
SPEKEEQYIAQFTSQFLSLQCLQALYVDSLFLRGRDLQLLRHVMNPLETSLITNCRLESEGDMHLSQS
PSVQSLSVLSLGVMLTDVSPEPLQALLERASATLQDLVFDECGITDDQLLALLPSLSHCSQLTTLSTFY
GNSISISALQSLQHLIGLSNLTHVLYPVPLESYEDIHGLHLERLAYLHARRELLCELGRPSMVWLS
ANPCPHCGDRTFYDPEPILCPCFMPN
TRTRPLEMESDESGLPAMEIECRITGTLNGVEFELVGGEGTPEQGRMTNKMSTKGALTFSPYLLSHV
MGYGFYHFGTYPSGYENPFLHAINNGYNTRIEKYEDGGVLHVSFSYRYEAGRVIGDFKVMGTGFPED
SVIFTDKIIRSNATVEHLHPMGDNDLDGSFTRTFLRDGGYSSVVDSHMHFKSAIHPSILQNGGPMFA
FRRVEEDHSNTELGIVEYQHAFKTPDADAGEERV
```

Restriction Sites:

Sgfl-Mlul

Cloning Scheme:



ACCN: NM_001291716

ORF Size: 1527 bp

OTI Disclaimer: The molecular sequence of this clone aligns with the gene accession number as a point of reference only. However, individual transcript sequences of the same gene can differ through naturally occurring variations (e.g. polymorphisms), each with its own valid existence. This clone is substantially in agreement with the reference, but a complete review of all prevailing variants is recommended prior to use. [More info](#)

OTI Annotation: This clone was engineered to express the complete ORF with an expression tag. Expression varies depending on the nature of the gene.

Components: The ORF clone is ion-exchange column purified and shipped in a 2D barcoded Matrix tube containing 10ug of transfection-ready, dried plasmid DNA (reconstitute with 100 ul of water).

RefSeq: [NM_001291716.2](#)

RefSeq Size: 2197 bp

RefSeq ORF: 1530 bp

Locus ID: 23532

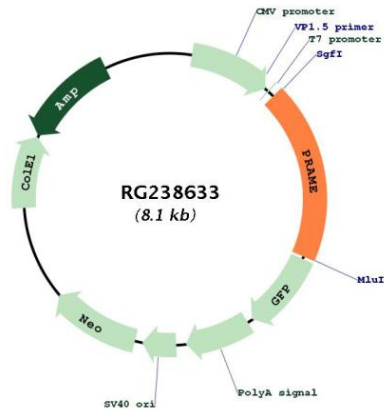
UniProt ID: [P78395](#)

Cytogenetics: 22q11.22

MW: 58.3 kDa

Gene Summary: This gene encodes an antigen that is preferentially expressed in human melanomas and that is recognized by cytolytic T lymphocytes. It is not expressed in normal tissues, except testis. The encoded protein acts as a repressor of retinoic acid receptor, and likely confers a growth advantage to cancer cells via this function. Alternative splicing results in multiple transcript variants. [provided by RefSeq, Apr 2014]

Product images:



Circular map for RG238633