

Product datasheet for **RG238621**

FRS2 (NM_001278354) Human Tagged ORF Clone

Product data:

Product Type:	Expression Plasmids
Product Name:	FRS2 (NM_001278354) Human Tagged ORF Clone
Tag:	TurboGFP
Symbol:	FRS2
Synonyms:	FRS1A; FRS2A; FRS2alpha; SNT; SNT-1; SNT1
Mammalian Cell Selection:	Neomycin
Vector:	pCMV6-AC-GFP (PS100010)
E. coli Selection:	Ampicillin (100 ug/mL)



[View online »](#)

ORF Nucleotide Sequence:

>RG238621 representing NM_001278354.
 Blue=ORF Red=Cloning site Green=Tag(s)

```
GCTCGTTTAGTGAACCGTCAGAATTTTGTAAACGACTCACTATAGGGCGGCCGGGAATTCGTGCGACTG
GATCCGGTACCGAGGAGATCTGCCGCCCGCATCGCC
ATGGGTAGCTGTTGTAGCTGTCCAGATAAAGACACTGTCCAGATAACCATCGGAACAAGTTTAAGGTC
ATTAATGTGGATGATGATGGGAATGAGTTAGGTTCTGGCATAATGGAACCTACAGACACAGAAGTATT
TTATACACCCGCAACCGTACTCAGTAAAATGGCACTACCTCTGCCTGCGACGCTATGGCTATGACTCG
AATCTCTTTTCTTTTGAAGTGGTCAAGGTGTCAAACCTGGACAAGGAATCTTTGCCTTTAAGTGTGCC
CGTGCAGAAGAATTATTTAACATGTTGCAAGAGATTATGCAAAAATAAGTATAAATGTGGTGGAAAGAG
CCAGTTGTAGAAAAGAAATAATCATCAGACAGAATTGGAAGTCCCTAGAACACCTCGAACACCTACAAC
CCAGGATTTGCTGCTCAGAACTTACCTAATGGATATCCCCGATATCCCTCATTTGGAGATGCTTCATCC
CATCCGTC AAGCAGACATCCTTCTGTGGGAAGTCTCGCTGCCTTCAGTAGGGGAAGAATCTACACAT
CCTTTGCTTGTGGCTGAGGAACAAGTACATACCTATGTCAACACTACAGGTGTGCAAGAAGAGCGGAAA
AACCGCACAAGTGTGCATGTTCCATTGGAGGCAAGGGTTCTAACGCTGAAAGCAGCACACCAAAAAGAA
GAACCAAGTAGTATTGAGGACAGGGATCCCTCAGATTCTTCTTGAACCTGAAGGAGTCAAATTTGTTTTA
GGGCCAACCCCTGTTCAAAGCAGTTAATGGAAAAAGAGAAACTGGAGCAACTTGGAAAGAGATCAAGTT
AGTGGAAGTGGAGCAATAACACAGAATGGGACTGGCTATGACAGTGTGAACGAAGAGATGCACCC
TCTGTTAAACAACTGGTGTATGAAAATATAAATGGGCTATCTATCCCTAGTGCCTCAGGGGTGAGGAGA
GGTCGCTGACATCCACCACTACCTCAGATACCAGAATATCAACAACTCAGCTCAGAGAAGAAGTGA
TTATTAACACTATGAAAATCTACCATCTTTGCCTCCTGTTGGGAAGCCCGCAAGCTAAGTAGGGATGAA
GATGACAAATTAGGACCAAGACCCCATCTCTAAATGGCTACCATAATAATCTAGATCCAATGCATAAC
TATGTAATAACAGAGAATGTAACAGTCCAGCAAGTGTCAACAAAATAGAATATTC AAGGCGTCGGGAC
TGTACACCAACAGTCTTTAACTTTGATATCAGACGCCCAAGTTTAGAACACAGGCAAGCTTAATTACATA
CAGGTTGACTTGGAAAGTGGCAGTACTCTGACAAACCCTCAGACTCCAAAAACGCCTACAACCTCCCTT
CCACAAACCCCTACCAGGCGCACAGAGCTGTATGCCGTGATAGACATCGAGAGAAGTGTGCTATGTCA
AATTTGCAGAAAGCACTGCCACGAGATGATGGTACATCTAGGAAAAGTACACACAATAGTACTGATCTG
CCCATGTTAGCCTGAAA
ACGCGTACGCGGCCGCTCGAG – GFP Tag – GTTAAAC
```

Protein Sequence:

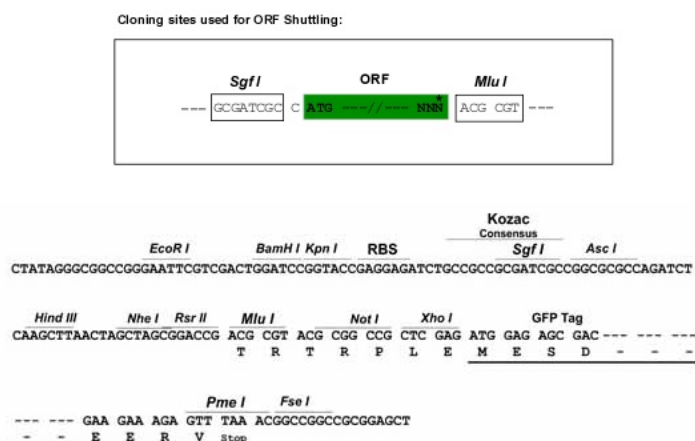
>Peptide sequence encoded by RG238621
 Blue=ORF Red=Cloning site Green=Tag(s)

```
MGSCCSPDKDTPVDNHRNFKVINVDDDGNELGSGIMELTDELILYTRKRDSVKWHYLCLRRYGYDS
NLF SFGRRRCQTGGQIFAFKCARAEELFNMLQEIMQNNNSINVVEEPVVERNHHQTELEVPRTPRTPTT
PGFAAQNL PNGYPRYP SFGDASSHPSSRHPSVGSARLPSVGEESTHPLLVAEEQVHTYVNTTGVQEERK
NRTSVHVPLEARVSNAESSTPKKEPSSIEDRDPQILLEPEGVKFVLGPTPVQKQLEMEKELEQLGRDQV
SGSGANTEWDTGYDSDERRDAPSVNKL VYENINGL SIPSASGVRGRGLTSTSTSDTQINNSAQRRTA
LLNYENLPSLPPVWEARKL SRDEDDNLGPKTPSLNGYHNNLDPMHNYVNTENVTPASAHKIEYSRRRD
CTPTVFNFDIRRRSLEHRQLNYIQVDLEGGSDSNPQTPKTPPTPLPQTPTRTELYAVIDIERTAAMS
NLQKALPRDDGTSRKTRHNSTDLPLAWK
TRTRPLEMESDESGLPAMEIECRITGTLNGVEFELVGGEGTPEQGRMTNKMSTKGALTFSPYLLSHV
MGYGFYHFGTYPSGYENPFLHAINNGGYNTRIEKYEDGGVLHVSFSYRYEAGRVIGDFKVMGTGFPED
SVIFTDKIIRSNATVEHLHPMGDNDLDGSFTRTFLRDGGYSSVVD SHMHFKSAIHPSILQNGGPMFA
FRRVEEDHSNTELGIVEYQHAFKTPDADAGEERV
```

Restriction Sites:

Sgfl-Mlul

Cloning Scheme:



ACCN: NM_001278354

ORF Size: 1536 bp

OTI Disclaimer: The molecular sequence of this clone aligns with the gene accession number as a point of reference only. However, individual transcript sequences of the same gene can differ through naturally occurring variations (e.g. polymorphisms), each with its own valid existence. This clone is substantially in agreement with the reference, but a complete review of all prevailing variants is recommended prior to use. [More info](#)

OTI Annotation: This clone was engineered to express the complete ORF with an expression tag. Expression varies depending on the nature of the gene.

Components: The ORF clone is ion-exchange column purified and shipped in a 2D barcoded Matrix tube containing 10ug of transfection-ready, dried plasmid DNA (reconstitute with 100 ul of water).

RefSeq: [NM_001278354.1](#), [NP_001265283.1](#)

RefSeq Size: 6929 bp

RefSeq ORF: 1527 bp

Locus ID: 10818

UniProt ID: [Q8WU20](#)

Cytogenetics: 12q15

Protein Families: Druggable Genome

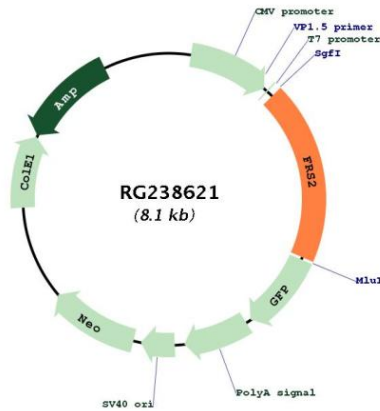
Protein Pathways: Neurotrophin signaling pathway

MW: 57.5 kDa

Gene Summary:

Adapter protein that links activated FGR and NGF receptors to downstream signaling pathways. Plays an important role in the activation of MAP kinases and in the phosphorylation of PIK3R1, the regulatory subunit of phosphatidylinositol 3-kinase, in response to ligand-mediated activation of FGFR1. Modulates signaling via SHC1 by competing for a common binding site on NTRK1.[UniProtKB/Swiss-Prot Function]

Product images:



Circular map for RG238621