

## Product datasheet for **RG238590**

### CDC25B (NM\_001287517) Human Tagged ORF Clone

#### Product data:

Product Type:	Expression Plasmids
Product Name:	CDC25B (NM_001287517) Human Tagged ORF Clone
Tag:	TurboGFP
Symbol:	CDC25B
Mammalian Cell Selection:	Neomycin
Vector:	pCMV6-AC-GFP (PS100010)
E. coli Selection:	Ampicillin (100 ug/mL)
ORF Nucleotide Sequence:	>RG238590 representing NM_001287517. Blue=ORF Red=Cloning site Green=Tag(s)

```
GCTCGTTTAGTGAACCGTCAGAATTTTGTAAACGACTCACTATAGGGCGGCCGGGAATTCGTCGACTG
GATCCGGTACCGAGGAGATCTGCCGCCGCGATCGCC
ATGCACAGCCGACGCCCTGACGCACCTATCCCTGTCTCGACGGGCATCCGAATCCTCCCTGTCGTCT
GAATCCTCCGAATCTTCTGATGCAGGTCTCTGCATGGATCCCCAGCCCTATGGACCCCATGGCG
GAGCAGACGTTTGAACAGGCCATCCAGGCAGCCAGCCGGATCATTGAAACGAGCAGTTTGCATCAGA
CGTTCCAGTCTATGCCGGTGAGGCTGCTGGGCCACAGCCCGTGCTTCGGAACATCACCAACTCCCAG
GCGCCCGAGCCGGAGGAAGAGCGAGGGCGGCAGTGGAGCTGCCAGCAGCTCTGGGGAAGACAAGGAG
AATGATGGATTTGTCTTCAAGATGCCATGGAAGCCACACATCCCAGCTCCACCCATGCTCTGGCAGAG
TGGGCCAGCCGACGGGAAGCCTTTGCCAGAGACCCAGCTCGGCCCCGACCTGATGTGTCTCAGTCTT
GACCGGAAGATGGAAGTGAGGAGCTCAGCCCTGGCCCTAGGTCGCTTCTCTGACCCCTGCAGAG
GGGATACTGAGGAAGATGATGGATTTGTGGACATCCTAGAGAGTGACTTAAAGGATGATGATGCAGTT
CCCCAGGCATGGAGAGTCTCATTAGTGCCCACTGGTCAAGACCTTGGAAAAGGAGGAAAAGGAC
CTCGTATGTACAGCAAGTGCCAGCGGCTTCCGCTCTCCGTCATGCCCTGCAGCGTGATCCGGCCC
ATCCTCAAGAGGCTGGAGCGGCCAGGACAGGACACGCCCGTGCAGAATAAGCGGAGGCGGAGCGTG
ACCCCTCCTGAGGAGCAGCAGGAGGCTGAGGAACCTAAAGCCCGCTCCTCCGCTCAAAATCACTGTGT
CACGATGAGATCGAGAACCTCCTGGACAGTGACCACCGAGAGCTGATTGGAGATTACTCTAAGGCCTTC
CTCTACAGACAGTAGACGGAAAGCACCAAGACCTCAAGTACATCTACCAGAAACGATGGTGGCCCTA
TTGACGGGCAAGTTCAGCAACATCGTGGATAAGTTTGTGATTGTAGACTGCAGATACCCCTATGAATAT
GAAGGCGGGCACATCAAGACTGCGGTGAACTTGCCCTGGAACGCGACGCCGAGAGCTTCTACTGAAG
AGCCCCATCGCGCCCTGTAGCCTGGACAAGAGAGTCATCCTCATTTTCCACTGTGAATTCTCATCTGAG
CGTGGGCCCGCATGTGCCGTTTCATCAGGGAACGAGACCGTGTGTCAACGACTACCCAGCCTCTAC
TACCCTGAGATGTATCCTGAAAGCGGCTACAAGGAGTTCTTCCCTCAGCACCCGAACCTCTGTGAA
CCCCAGGACTACCGCCCATGAACCACGAGGCTTCAAGGATGAGCTAAAGACCTTCCGCTCAAGACT
CGCAGTGGGCTGGGAGCGGAGCCGGGAGCTCTGAGCCGGCTGCAGGACCAAG
ACCGCTACGCGGCCGCTCGAG - GFP Tag - GTTTAAAC
```



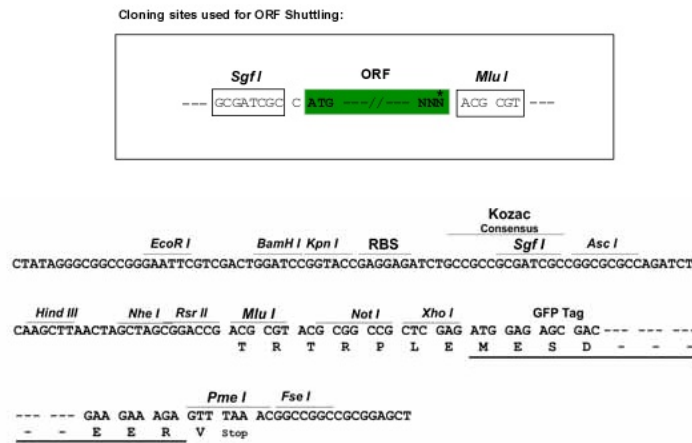
[View online >](#)

**Protein Sequence:** >Peptide sequence encoded by RG238590  
 Blue=ORF Red=Cloning site Green=Tag(s)

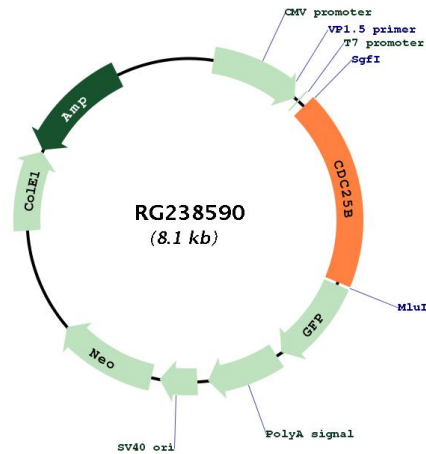
MHSRSRLTHLSRRASESSLSESSESSDAGLCMDSPSPMDPHMAEQTFEQAIQAASRIIRNEQFAIR  
 RFQSMQVRLLGHPVLRNITNSQAPDGRRKSEAGSGAASSSGEDKENDGFVFKMPWKPTHPSSTHALAE  
 WASRREAFQRPSSAPDLMCLSPDRKMEVEEL SPLALGRFSLTPAEGDTEEDDGFVDILESCLKDDDAV  
 PPGMESLISAPLVKTKLEKEEEKDLVMYSKCQRLFRSPSPMPCSVIRPILKRLERPQDRDTPVQNKRRRSV  
 TPPEEQEAEPEPKARVLRKSLCHDEIENLLDSDHRELIGDYSKAFLLQTVDGKHQDLKYISPETMVAL  
 LTGKFSNIVDKFVIVDCRYPEYEGGHIKTAVNPLERDAESFLKSPIAPCSLDKRVILIFHCFSSSE  
 RGRPMCRFIRERDRAVNDYPSLYPEMYILKGGYKEFFPQHPNFCEPQDYRPMNHEAFKDELKTRFKLT  
 RSWAGERSRRELCSRLQDQ  
**TRTRPLEMESDEGLPAMEIECRITGTLNGVEFELVGGEGTPEQGRMTNKMSTKGALTFSPYLLSHV**  
 MGYGFYHFGTYPSTYENPFLHAINNGGYNTRIEKYEDGGVLHVSFSYRYEAGRVIGDFKVMGTGFPED  
 SVIFTDKIRSNATVEHLHPMGDNDLDGSFTRTFLRDGGYSSVVDSHMHFKSAIHPSILQNGGPMFA  
 FRRVEEDHSNTELGIVEYQHAFKTPDADAGEERV

**Restriction Sites:** Sgfl-MluI

**Cloning Scheme:**



Plasmid Map:



ACCN: NM\_001287517

ORF Size: 1506 bp

OTI Disclaimer: The molecular sequence of this clone aligns with the gene accession number as a point of reference only. However, individual transcript sequences of the same gene can differ through naturally occurring variations (e.g. polymorphisms), each with its own valid existence. This clone is substantially in agreement with the reference, but a complete review of all prevailing variants is recommended prior to use. [More info](#)

OTI Annotation: This clone was engineered to express the complete ORF with an expression tag. Expression varies depending on the nature of the gene.

Components: The ORF clone is ion-exchange column purified and shipped in a 2D barcoded Matrix tube containing 10ug of transfection-ready, dried plasmid DNA (reconstitute with 100 ul of water).

RefSeq: [NM\\_001287517.1](#), [NP\\_001274446.1](#)

RefSeq Size: 3029 bp

RefSeq ORF: 1509 bp

Locus ID: 994

Cytogenetics: 20p13

Protein Families: Druggable Genome, Phosphatase

Protein Pathways: Cell cycle, MAPK signaling pathway, Progesterone-mediated oocyte maturation

MW: 57.8 kDa

**Gene Summary:**

CDC25B is a member of the CDC25 family of phosphatases. CDC25B activates the cyclin dependent kinase CDC2 by removing two phosphate groups and it is required for entry into mitosis. CDC25B shuttles between the nucleus and the cytoplasm due to nuclear localization and nuclear export signals. The protein is nuclear in the M and G1 phases of the cell cycle and moves to the cytoplasm during S and G2. CDC25B has oncogenic properties, although its role in tumor formation has not been determined. Multiple transcript variants for this gene exist. [provided by RefSeq, Jul 2008]