

Product datasheet for **RG238581**

WASF3 (NM_001291965) Human Tagged ORF Clone

Product data:

Product Type:	Expression Plasmids
Product Name:	WASF3 (NM_001291965) Human Tagged ORF Clone
Tag:	TurboGFP
Symbol:	WASF3
Synonyms:	Brush-1; SCAR3; WAVE3
Mammalian Cell Selection:	Neomycin
Vector:	pCMV6-AC-GFP (PS100010)
E. coli Selection:	Ampicillin (100 ug/mL)



[View online »](#)

ORF Nucleotide Sequence:

>RG238581 representing NM_001291965.
 Blue=ORF Red=Cloning site Green=Tag(s)

```
GCTCGTTTAGTGAACCGTCAGAATTTTGTAAACGACTCACTATAGGGCGGCCGGGAATTCGTGACTG
GATCCGGTACCGAGGAGATCTGCCGCCCGGATCGCC
ATGCCTTTAGTGAAGAGGAACATTGAGCCCCGGCACTTGTGCCGGGAGCTCTGCCTGAAGGGATTACC
AGCGAAGTTGAATGTGTAAACCAATAGTACTCTTGCCGCTATCATACGCCAGCTGAGCAGTCTGAGCAAA
CATGCTGAAGACATATTTGGTGAGTTGTTAATGAGGCTAAACAATTCTACATCAGAGCAAATTCCTT
CAAGACAGAATTGATCGCCTTGCTGTCAAAGTCAACCAGCTGGATTCAACAGTGGAAAGAGTCTCACTA
CAGGATATCAACATGAAAAAGCTTTCAAAGTCCACAGTCCAAGACCAGCAAGTGGTTTCAAAGAAC
AGCATTCTAATCCTGTTGCTGATATTTACAACCAGAGTGATAAGCCACCGCCTCTGAACATCCTGACA
CCATACAGAGATGACAAGAAGGATGGGCTGAAGTTCTATACTGATCCTTCTATTTCTTTGACCTCTGG
AAAGAAAAATGTACAGGACACAGAAGACAAAAGGAAAGAGAAAAGGCGTCAAAGAGAGAGAAACAC
AAGCTGAACCCTAACAGAAACCAGCAAGTAAATGTGAGAAAAGTCAAGAAAGAAAGAGTGGGAG
AGAAGGAAAATGGGCATTGAGTTTATGAGTGACGCAAAGAACTGGAGCAGGCAGGGAGCGCCAAAGAG
GACAGAGTGCCGAGCGGGTCACATGCATCGGACGTTACGGATTACTCTTACCCGGCTACTCCAACCAT
TCTCTGACCCCCAGCCTGTGACCCCTTCTATGCAGCTGGTGACGTGCCACCACACGGGCTGCAAGC
CAGGCTGCGGAGCATGAGTACCGGCCCCATCTGCCTCGGCGAGGCACATGGCCCTCAACAGACCTCAG
CAGCCGCCCCCCCGCCTCCCCCTCAGGCCCCAGAGGGTCCCAGGCCTCTGCACCGATGGCTCCAGCA
GACTACGGGATGCTCCAGCGCAGATAATTGAGTATTACAACCCATCCGGACCACCTCCTCCGCCACCT
CCTCCTGTGATTCCTCAGCACAACTGCCTTCGTGAGCCCTCTCCAGATGCCATGCAGCCCCCGTTC
CCTGCATCAGCCAGCTCCACGCACGAGCTCCTCCTCACCACCCTCCACCGGCTCTGGTACAGCC
CCGCCACCCCGGGCCACCACCTCCCCCGCAGGCCCTCTGGTCCCGGCTCTTCTCTTTCGTCCTCC
CCAATGCATGGCCCCCAGTAGCTGAGGCGAAGCGGCAAGAGCCTGCACAGCCACCAATCAGTGATGCT
CGAAGCGACCTCCTCGTGCTATTGCAATGGGAATTCAACTGAAAAAGGTGCAGGAGCAGCGGGAGCAG
GAGGCCAAGCGGGAGCCAGTGGGAATGACGTGGCCACGATCCTGTCCCGGCGCATTGCCGTGGAGTAC
AGCGACTCTGACGACGACTCAGAGTTCGACGAGAACGACTGGTCCGAC
ACGCGTACGCGGCCGCTCGAG - GFP Tag - GTTTAAAC
```

Protein Sequence:

>Peptide sequence encoded by RG238581
 Blue=ORF Red=Cloning site Green=Tag(s)

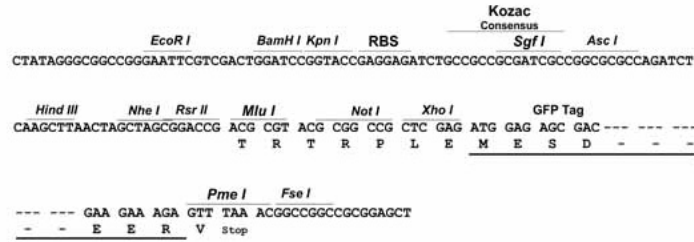
```
MPLVKRNIEPRHLCRGALPEGITSELECVTNSTLAAIIRQLSSLSKHAEDIFGELFNEANNFYIRANSL
QDRIDRLAVKVTQLDSTVEEVSLQDINMKKAFKSSVQDQVVSKNIPNPVADIYNQSDKPPPLNILT
PYRDDKKDGLKFYTDPSYFFDLWKEKMLQDTEDKRKEKRRQKREKHLNPNRNQQVNRKVRTRKEEWE
RRKMGIEFMSDAKKLEQAGSAKEDRVPSGSHASDVTDYSYPATPNHSLHPQPVTPSYAAGDVPPHPGAS
QAAEHEYRPPSASARHMALNRPQPPPPPPPPQPEGSQASAPMAPADYGMLPAQIIEYYNPSGPPPPPP
PPVIPSATQAFVSPLQMPMQPPFPASASSTHAAPHPSTGLLVTAPPPGPPPPPPGPPGSSSSSS
PMHGPPVAEAKRQEPAPPIISDARSLLAAIRMGILKVKVQEQREQEAKREPVGNDVATILSRRIAVEY
SDSDDDSEFDENDWSD
TRTRPLEMESDESGLPAMEIECRITGTLNGVEFELVGGGEGTPEQGRMTNKMSTKGALTFSPYLLSHV
MGYGFYHFGTYPSGYENPFLHAINNGGYTNTRIEKYEDGGVLHVSFSYRYEAGRVIGDFKVMGTGFPED
SVIFTDKIIRSNATVEHLHPMGDNDLDGSFTRTFLRDGGYSSVVDSHMHFKSAIHPSILQNGGPMFA
FRRVEEDHSNTELGIVEYQHAFKTPDADAGEERV
```

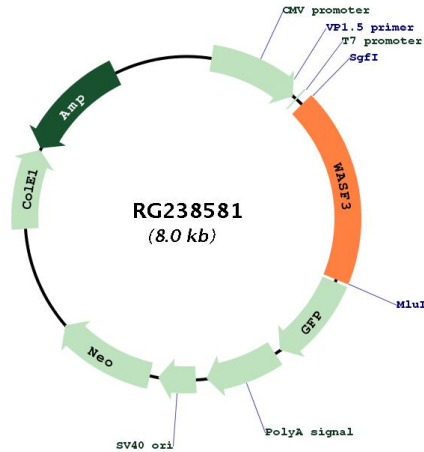
Restriction Sites:

Sgfl-Mlul

Cloning Scheme:

Cloning sites used for ORF Shutting:



Plasmid Map:


ACCN:	NM_001291965
ORF Size:	1497 bp
OTI Disclaimer:	The molecular sequence of this clone aligns with the gene accession number as a point of reference only. However, individual transcript sequences of the same gene can differ through naturally occurring variations (e.g. polymorphisms), each with its own valid existence. This clone is substantially in agreement with the reference, but a complete review of all prevailing variants is recommended prior to use. More info
OTI Annotation:	This clone was engineered to express the complete ORF with an expression tag. Expression varies depending on the nature of the gene.
Components:	The ORF clone is ion-exchange column purified and shipped in a 2D barcoded Matrix tube containing 10ug of transfection-ready, dried plasmid DNA (reconstitute with 100 ul of water).
RefSeq:	NM_001291965.1 , NP_001278894.1

RefSeq Size:	4841 bp
RefSeq ORF:	1500 bp
Locus ID:	10810
UniProt ID:	Q9UPY6
Cytogenetics:	13q12.13
Protein Families:	Druggable Genome
Protein Pathways:	Adherens junction, Fc gamma R-mediated phagocytosis
MW:	55.5 kDa
Gene Summary:	<p>This gene encodes a member of the Wiskott-Aldrich syndrome protein family. The gene product is a protein that forms a multiprotein complex that links receptor kinases and actin. Binding to actin occurs through a C-terminal verprolin homology domain in all family members. The multiprotein complex serves to transduce signals that involve changes in cell shape, motility or function. A pseudogene of this gene have been defined on chromosome 6. Alternative splicing results in multiple transcript variants [provided by RefSeq, May 2014]</p>