

Product datasheet for **RG238558**

PAPOLA (NM_001293632) Human Tagged ORF Clone

Product data:

| | |
|---------------------------|--|
| Product Type: | Expression Plasmids |
| Product Name: | PAPOLA (NM_001293632) Human Tagged ORF Clone |
| Tag: | TurboGFP |
| Symbol: | PAPOLA |
| Synonyms: | PAP; PAP-alpha |
| Mammalian Cell Selection: | Neomycin |
| Vector: | pCMV6-AC-GFP (PS100010) |
| E. coli Selection: | Ampicillin (100 ug/mL) |



[View online »](#)

ORF Nucleotide Sequence:

>RG238558 representing NM_001293632.
 Blue=ORF Red=Cloning site Green=Tag(s)

```

GCTCGTTTAGTGAACCGTCAGAATTTTGTAAACGACTCACTATAGGGCGGCCGGGAATTCGTGACTG
GATCCGGTACCGAGGAGATCTGCCGCCCGGATCGCC
ATGCTAGTAGCAAGAACTTGCAGCTTTATCCAAATGCAATAGCATCAACTCTTGTACATAAATTTTTC
TTGGTATTTTCTAAATGGGAATGGCCAAATCCAGTGTATTGAAACAGCCTGAAGAATGCAATCTTAAT
TTGCCTGTATGGGACCCAAGGGTAAACCCAGTGATAGGTACCATCTTATGCCTATAATTACACCAGCA
TACCCACAACAGAACTCCACGTACAATGTGCCGTTTCAACACGGATGGTCATGTTGAGGAGTTTAAA
CAAGGTCTTGCTATCACAGATGAAATTTTGTGAGTAAGGCAGAGTGGTCCAAACTTTTTGAAGCTCCA
AACTTCTTTCAAAGTACAAGCATTATATTGTACTTCTAGCAAGTGCACCAACAGAAAAACAACGCCTG
GAATGGTGGGCTTGGTGAATCAAAAATCCGAATCCTGGTTGGAAGCTTGGAGAAGAATGAATTTATT
ACACTGGCTCATGTGAATCCCAGTCATTTCCAGCACCCAAAGAAAATCCCGACAAGGAAGAAATTCGC
ACGATGTGGGTGATTGGGTTAGTGTAAAAAACAAGAACTCTGAAAACCTCAGTGTGATCTCACC
TATGATATTCAGTCTTTACAGATACAGTTTATAGGCAAGCAATAAACAGCAAGATGTTTGAGGTGGAT
ATGAAAATGCTGCAATGCATGTAAAAAGAAAGCAACTCCATCAACTACTACCTAATCATGTGCTTCAG
AAAAAGAAAAGCATTCAACAGAAAGGTGCAAAATTGACAGCTCTCAATGACAGCAGCCTCGACTGTCT
ATGGACAGTGATAACAGCATGTCTGTGCCTTCCACTACTAGTGCTACGAAGACCAGTCCATTGAACAGT
TCTGGCAGCTCTCAGGGCAGAAACAGTCTGCTCCAGCTGTAACAGCAGCATCTGTGACCAACATACAG
GCTACTGAAGTTTCTGTGCCACAAGTAAATCCAGTGAAGCTCAGGGGGTACATCGAGTGAAAGCATT
CCTCAAAGTCCACACAACCAGCCATTTCTCCACCACCAAGCCACGGTCTCCAGAGTTGTTTCTTCA
ACACGTCTGGTAAACCCACCACCTAGATCTTCAGGAAATGCAGCAACTTCAGGAAATGCAGCAACAAAA
ATACCTACTCCTATAGTAGGAGTCAAGAGGACATCCTCACCTCATAAAGAAGAGAGTCCCAAGAAACCC
AAAACAGAAAGAGGATGAAACAAGTGAAGATGCTAACTGTCTTGGCTTTGAGTGGACATGATAAAACAGAA
GCAAAGGAACAACCTTGATACAGAGACAAGTACAACCTCAATCAGAAACTATTTCAGACAGCGCTTCTCTG
TTGGCCTCTCAGAAAACATCCAGTACAGACCTTTCTGATATCCCTGCTCTCCCTGCAAACTCTATTCTT
GTTATCAAGAATTCAATAAAACTGAGATTGAATCGG
ACGCGTACGCGGCCGCTCGAG - GFP Tag - GTTTAAAC
  
```

Protein Sequence:

>Peptide sequence encoded by RG238558
 Blue=ORF Red=Cloning site Green=Tag(s)

```

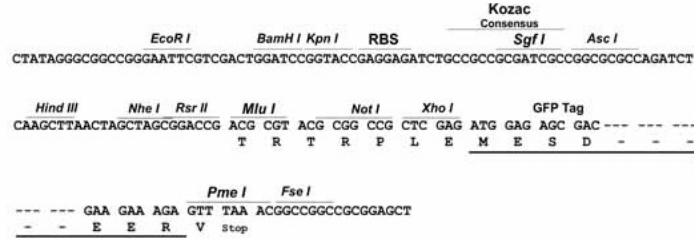
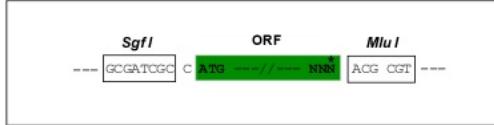
MLVARTCQLYPNAIASTLVHKFFLVFSKWEWPNPVLLKQPEECNLNLPVWDPRVNPSTRYHLMPIITPA
YPQONSTYNVSVSTRMVMVEEFKQGLAITDEILLSKAEWSKLEAPNFFQYKHYIVLLASAPTEKQRL
EWWGLVESKIRILVGSLEKNEFITLAHVNPQSFPAKKNPDKEEFRTMWVIGLVFKKTENSENLSVDLT
YDIQSFDTVYRQAINSKMFVDMKIAAMHVKRKQLHQLLPNHVLQKKKHSTEGVKLTALNDSSLDLS
MDSDNSMSVPSPTSATKTSPLNSSGSSQGRNSPAPAVTAASVTNIQATEVSVQVNSSESSGGTSSESI
PQTATQPAISPPPKPTVSRVSSTRLVNPSSGNAATSGNAATKIPTPIVGVKRTSSPHKEESPCKT
KTEEDTSEDANCLALS GHDKTEAKEQLDTETSTTQSETIQTAASLLASQKTSSTDLSDIPALPANPIP
VIKNSIKLRLNR
TRTRPLEMESDESGLPAMEIECRITGTLNGVEFELVGGEGTPEQGRMTNKMSTKGALTFSPYLLSHV
MGYGFYHFGTYPSGYENPFLHAINNGGYTNTRIEKYEDGGVLHVSFSYRYEAGRVIGDFKVMGTGFPED
SVIFTDKIIRSNATVEHLHPMGDNDLDGSFTRTFLRDGGYSSVVD SHMHFKSAIHPSILQNGGPMFA
FRRVEEDHSNTELGIVEYQHAFKTPDADAGEERV
  
```

Restriction Sites:

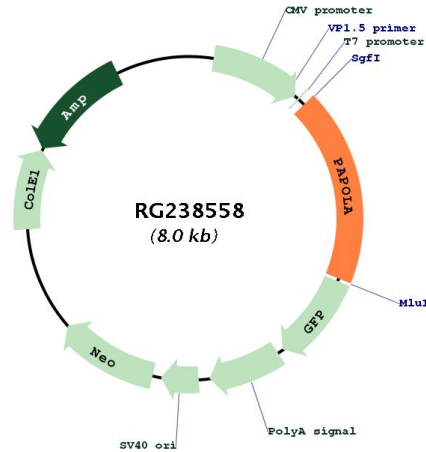
Sgfl-MluI

Cloning Scheme:

Cloning sites used for ORF Shutting:



Plasmid Map:



ACCN: NM_001293632

ORF Size: 1485 bp

OTI Disclaimer: The molecular sequence of this clone aligns with the gene accession number as a point of reference only. However, individual transcript sequences of the same gene can differ through naturally occurring variations (e.g. polymorphisms), each with its own valid existence. This clone is substantially in agreement with the reference, but a complete review of all prevailing variants is recommended prior to use. [More info](#)

OTI Annotation: This clone was engineered to express the complete ORF with an expression tag. Expression varies depending on the nature of the gene.

Components: The ORF clone is ion-exchange column purified and shipped in a 2D barcoded Matrix tube containing 10ug of transfection-ready, dried plasmid DNA (reconstitute with 100 ul of water).

RefSeq: [NM_001293632.2](#)

RefSeq Size: 4378 bp

RefSeq ORF: 1488 bp

Locus ID: 10914

UniProt ID: [P51003](#)

Cytogenetics: 14q32.2

Protein Families: Transcription Factors

Protein Pathways: RNA degradation

MW: 54.9 kDa

Gene Summary: The protein encoded by this gene belongs to the poly(A) polymerase family. It is required for the addition of adenosine residues for the creation of the 3'-poly(A) tail of mRNAs. Alternatively spliced transcript variants encoding different isoforms have been found for this gene. [provided by RefSeq, Oct 2011]