

Product datasheet for **RG238541**

PDIA6 (NM_001282704) Human Tagged ORF Clone

Product data:

Product Type:	Expression Plasmids
Product Name:	PDIA6 (NM_001282704) Human Tagged ORF Clone
Tag:	TurboGFP
Symbol:	PDIA6
Synonyms:	ERP5; P5; TXNDC7
Mammalian Cell Selection:	Neomycin
Vector:	pCMV6-AC-GFP (PS100010)
E. coli Selection:	Ampicillin (100 ug/mL)



[View online »](#)

ORF Nucleotide Sequence:

>RG238541 representing NM_001282704.
 Blue=ORF Red=Cloning site Green=Tag(s)

```
GCTCGTTAGTGAACCGTCAGAATTTTGTAAACGACTCACTATAGGGCGGCCGGGAATTCGTGACTG
GATCCGGTACCGAGGAGATCTGCCGCCCGGATCGCC
ATGAGAAGAGACCTCCGGGAGAAGCTTGTGTGGTGTGCCGACCACTGGCCCCAGTTGAGGTCCCAGCC
AACATCAGCTCCGACTTCCAGCCATGCTACCAACTTCTCTGCCCACTCCCTATCAAGGAAAAGTCCC
ATAATGTATCCATCAACCACCATGGCTAATGCACCCGGTCTGGTGAAGTGTACCTCTTTCTGGCAGTG
AATGGTCTGTATTCTCTAGTGATGATGTGATCGAATTAACCCATCGAATTTCAACCGAGAAGTTATT
CAGAGTGATAGTTTGTGGCTTGTAGAATTCATGCTCCATGGTGTGGTCACTGTCAAAGATTAACACCA
GAATGGAAGAAAGCAGCAACTGCATTAAGATGTTGTCAAAGTTGGTGCAGTTGATGCAGATAAGCAT
CATTCCCTAGGAGGTGAGTATGGTGTTCAGGGATTTCTACCATTAAGATTTTGGATCCAACAAAAAC
AGACCAGAAGATTACCAAGGTGGCAGAAGTGGTGAAGCCATTGTAGATGCTGCGTGAAGTGTCTGCGC
CAGCTCGTGAAGGATCGCTCGGGGACGAGCGGAGGATACAGTTCTGGAAAACAAGGCAGAAGTGTG
AGTTCAAGTAAGAAGGATGTGATTGAGCTGACAGACGACAGCTTTGATAAGAATGTTCTGGACAGTGA
GATGTTTGGATGGTTGAGTTCTATGCTCCTTGGTGTGGACTGCAAAAACCTAGAGCCAGAGTGGGCT
GCCGCAGCTTCAGAAGTAAAAGAGCAGACGAAAAGAAAAGTAAAAGTGGCAGCTGTGGATGCTACAGTC
AATCAGGTTCTGGCTCCCGATACGGGATTAGAGGATTTCTACAATCAAGATATTTAGAAAAGGCGAG
TCTCCTGTGGATTATGACGGTGGGCGGACAAGATCCGACATCGTGTCCCGGGCCCTTGATTTGTTTTCT
GATAACGCCCCACCTCCTGAGCTGCTTGAGATTATCAACGAGGACATTGCCAAGAGGACGTGTGAGGAG
CACCAGCTCTGTGTTGTGGCTGTGCTGCCCCATATCCTTGATACTGGAGCTGCAGGCAGAAATCTTAT
CTGGAAGTTCTTCTGAAGTTGGCAGACAAATACAAAAGAAAATGTGGGGTGGCTGTGGACAGAAGCT
GGAGCCCACTGAAGTGGACCCGCTTGGGGATTGGAGGTTGGGTACCCCGCCATGGCCGCCATC
AATGCACGCAAGATGAAATTTGCTCTGCTAAAAGGCTCCTTCAGTGAGCAAGGCATCAACGAGTTTCTC
AGGGAGCTCTCTTTGGGCTGGCTCCACGGCACCTGTAGGAGGCGGGGCTTTCCCTACCATCGTTGAG
AGAGAGCCTTGGGACGGCAGGGATGGCAGCTTCCCGTGGAGGATGACATTGACCTCAGTGATGTGGAG
CTTGATGACTTAGGGAAAGATGAGTTG
ACGCGTACGCGGCCGCTCGAG – GFP Tag – GTTTAAAC
```

Protein Sequence:

>Peptide sequence encoded by RG238541
 Blue=ORF Red=Cloning site Green=Tag(s)

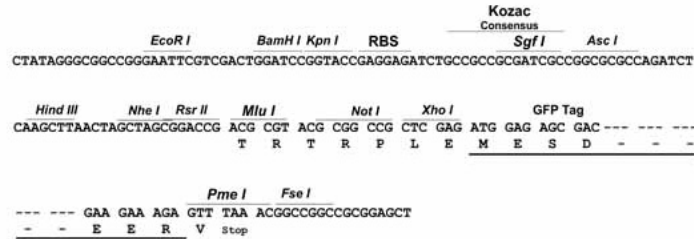
```
MRRDLREKLWVCRPLAPVEVPANISSDFQPCSPSPAHSLSRKSPIMYPSTTMANAPGLVSCTFFLAV
NGLYSSDDVIELTPSNFNREVIQSDSLWLVFYAPWCGHCQRLTPEWKAATALKDVVKVGAVDADKH
HSLGGQYGVQGFPTIKIFGSNKNRPEDYQGGRTGEAIVDAAL SALRQL VKDRLGGRSGGYSSGKQGRSD
SSSKKDVIELTDDSFKNVLDSEDVMMVEFYAPWCGHCKNLEPEWAAAASEVKEQTKGKVKLAAVDATV
NQVLASRYGIRGFPTIKIFQGESPVYDGGRTSRSDIVSRALDLFSDNAPPELLEIINEDIKRTCEE
HQLCVVAVLPHILDTGAAGRNSYLEVLLKADKYKKMVGWLWTEAGAQSELETALGIGGGYPAMAAI
NARKMKFALLKGSFSEQGINEFLRELSFGRGSTAPVGGGFPTIVEREPWDGRDGELPVEDDIDLSDVE
LDDLKDEL
TRTRPLEMESDESGLPAMEIECRITGTLNGVEFELVGGEGTPEQGRMTNKMSTKGALTFSPYLLSHV
MGYGFYHFGTYPSTYENPFLHAINNGYTNTRIEKYEDGGVLHVSFSYRYEAGRVIGDFKVMGTGFPED
SVIFTDKIIRSNATVEHLHPMGDNDLDGSFTRTFLRDGGYSSVVDSHMHFKSAIHPSILQNGGPMFA
FRRVEEDHSNTELGIVEYQHAFKTPDADAGEERV
```

Restriction Sites:

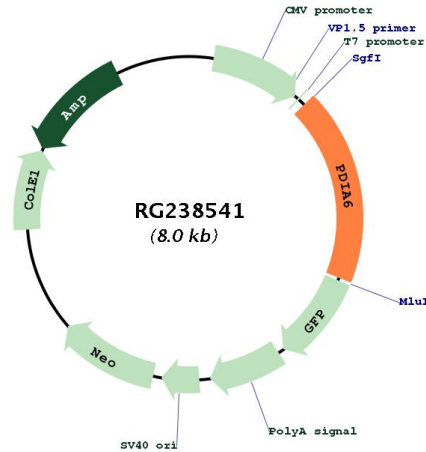
Sgfl-Mlul

Cloning Scheme:

Cloning sites used for ORF Shutting:



Plasmid Map:



ACCN: NM_001282704

ORF Size: 1476 bp

OTI Disclaimer: The molecular sequence of this clone aligns with the gene accession number as a point of reference only. However, individual transcript sequences of the same gene can differ through naturally occurring variations (e.g. polymorphisms), each with its own valid existence. This clone is substantially in agreement with the reference, but a complete review of all prevailing variants is recommended prior to use. [More info](#)

OTI Annotation: This clone was engineered to express the complete ORF with an expression tag. Expression varies depending on the nature of the gene.

Components: The ORF clone is ion-exchange column purified and shipped in a 2D barcoded Matrix tube containing 10ug of transfection-ready, dried plasmid DNA (reconstitute with 100 ul of water).

RefSeq: [NM_001282704.1](#), [NP_001269633.1](#)

RefSeq Size: 2700 bp

RefSeq ORF: 1479 bp

Locus ID: 10130

UniProt ID: [Q15084](#)

Cytogenetics: 2p25.1

Protein Families: Druggable Genome

MW: 54.4 kDa

Gene Summary: This gene encodes a member of the disulfide isomerase (PDI) family of endoplasmic reticulum (ER) proteins that catalyze protein folding and thiol-disulfide interchange reactions. The encoded protein has an N-terminal ER-signal sequence, two catalytically active thioredoxin (TRX) domains, a TRX-like domain, and a C-terminal ER-retention sequence. This protein inhibits the aggregation of misfolded proteins and exhibits both isomerase and chaperone activity. Alternative splicing results in multiple transcript variants encoding different isoforms. [provided by RefSeq, Dec 2016]