

Product datasheet for **RG238525**

PPWD1 (NM_001278929) Human Tagged ORF Clone

Product data:

Product Type:	Expression Plasmids
Product Name:	PPWD1 (NM_001278929) Human Tagged ORF Clone
Tag:	TurboGFP
Symbol:	PPWD1
Mammalian Cell Selection:	Neomycin
Vector:	pCMV6-AC-GFP (PS100010)
E. coli Selection:	Ampicillin (100 ug/mL)
ORF Nucleotide Sequence:	>RG238525 representing NM_001278929. Blue=ORF Red=Cloning site Green=Tag(s)

```
GCTCGTTTAGTGAACCGTCAGAATTTTGTAAACGACTCACTATAGGGCGGCCGGGAATTCGTCGACTG
GATCCGGTACCGAGGAGATCTGCCGCCGCGATCGCC
ATGAAGGTGTTTGATGTAGTGAACCTTTGACATGATCAACATGCTGAACTTGCTATTTTCCTGGACAG
TGTGAGTGGATCTATTGCCAGGGGATGCAATTTCTTCAGTTGCTGCTCCGAAAAGAGTACAGGAAAA
ATTTTCATTTATGATGGCCGAGGAGATAACCAGCCACTTCATATTTTGACAACTCCATACACCT
CTTACTCAGATACGGCTAAACCCAGTTTACAAAGCAGTAGTGTCTCTGACAAATCTGGGATGATTGAA
TACTGGACTGGCCTCCTCATGAATATAAATCCCAAAAAATGGAAGTGGGAATATAAACTGACACT
GATTTATATGAATTTGCCAAGTGAAGGCTTATCCAACGCGTATGTTTTCCACAGATGGGAAGAAA
ATAGCTACTATTGGTTCTGATAGAAAAGTTAGAATTTTCAGATTTGTAAGTGGAAAACATCATGAGAGTC
TTTGATGAATCACTAAGCATGTTTACTGAACTGCAACAGATGAGGCAACAGTTACCAGACATGGAATTT
GGCCGACGAATGGCTGTAGAAGTGTGAGTTGAGAAAGGTTGATGCTGTAAGATTAATTAATAGTTTTT
GATGAACTGGACACTTCGTGCTGTATGGAACAATGCTGGGCATTAAGTTATAAATGTAGAGACAAAC
CGGTGTGTGCGGATTTTAGGCAACAAGAAAATATTAGAGTGTGCAATTTGGCTTTGTTCCAGGGGATA
GCCAAAAGCATCGTGTGCAACTACTATAGAAATGAAAGCTTCTGAAAATCCTGTTCTTCAGAATATT
CAAGCTGACCCAACAATAGTCTGTACATCATTCAAAAAGAATAGATTTTATGTTTACCAACGAGAA
CCAGAAGATACGAAAAGTGCAGATCTGATCGAGATGTTTTAATGAGAAACCTTCTAAAGAAGAAGTC
ATGGCAGCTACTCAAGCTGAAGGACCTAAACGAGTTTCGGACAGTGCCATTATCCACACCAGCATGGGA
GACATTCACCAAACCTTTTTCTGTTGAGTGCCCTAAGACAGTGGAACCTTCTGTGTTACACAGAGA
AATGGTTATTATAATGGGCATACATTTACCGTATAATTAAGGGCTTTATGATTCAGACTGGAGATCCA
ACAGGTAAGTATGGGAGGAGAAAGCATATGGGAGGAGAAATTTGAAGATGAATTTTCATCAACATTA
CGACATGACAGGCCATACACACTCAGCATGGCTAACGCGGGATCAAACTAATGGATCCCGATTTTTTC
ATAACGGTAGTACCAACGCTTTGGCTTGATAATAAGCATACAGTATTTGGACGAGTGACTAAAGGAATG
GAAGTTGTACAGAGGATCTCAACGTCAAAGTCAATCCCAAAACAGATAAGCCCTATGAGGATGTCAGC
ATCATAAATATTACTGTCAAG
ACGCGTACGCGGCCGCTCGAG - GFP Tag - GTTTAAAC
```



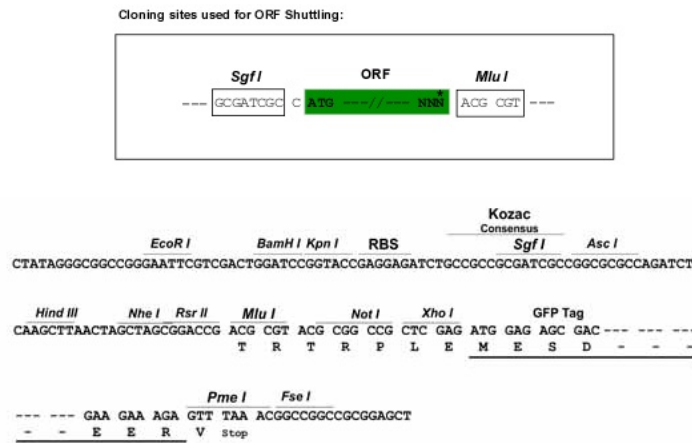
[View online »](#)

Protein Sequence: >Peptide sequence encoded by RG238525
 Blue=ORF Red=Cloning site Green=Tag(s)

MKVFDVVNFDMINMLKLYFPQGCEWIYCPGDAISSVAASEKSTGKIFIYDGRGDNQPLHIFDKLHTSP
 LTQIRLNPVYKAVVSSDKSGMIEYWTGPPHEYKFPKNVNWYKTDLDL YEFACKKAYPTSVCFSPDGKK
 IATIGSDRKVRI FRFVTGKLMRVFDELSMFTLQQMRQQLPDMFGRMAVERELEKVDVRLINIVF
 DETGHFVLYGTMLGIKVINVETNRCVRLGKQENIRVMQLALFQGI AKKHRAATTIEMKASENPVLQNI
 QADPTIVCTSFKKNRFYMF TKREPEDTKSADSDRDVFNKPSKEEVMAATQAEGPKRVSDSAIHTSMG
 DIHTKLPVVECPKTVENFCVHSRNGYYNGHTFHRIKGFMIQTGDPTGTGMGGESI WGGFEDEFHSTL
 RHRDPYTLSMANAGSNTNGSQFFITVVPTPWL DNKHTVFGRVTKGMEVVQRISNVKVNPKTDKPYEDVS
 IINITVK
 TRTRPLEMESDESGLPAMEIECRITGTLNGVEFELVGGEGTPEQGRMTNKMSTKGALTFSPYLLSHV
 MGYGFYHFGTYP SGYENPFLHAINNGGYNTRIEKYEDGGVLHVSFSYRYEAGRVIGDFKVMGTGFPED
 SVIFTDKIIRSNATVEHLHPMGDNDL DGSFTRTFLRDGGYSSVVD SHMHFKSAIHPSILQNGGPMFA
 FRRVEEDHSNTELGIVEYQHAFKTPDADAGEERV

Restriction Sites: Sgfl-MluI

Cloning Scheme:



ACCN: NM_001278929

ORF Size: 1470 bp

OTI Disclaimer: The molecular sequence of this clone aligns with the gene accession number as a point of reference only. However, individual transcript sequences of the same gene can differ through naturally occurring variations (e.g. polymorphisms), each with its own valid existence. This clone is substantially in agreement with the reference, but a complete review of all prevailing variants is recommended prior to use. [More info](#)

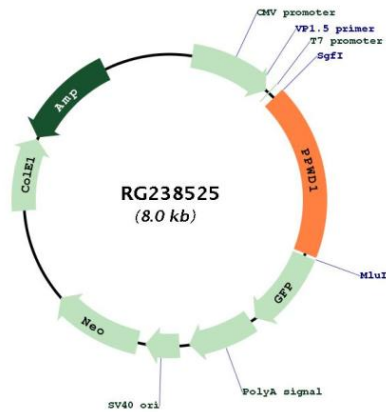
OTI Annotation: This clone was engineered to express the complete ORF with an expression tag. Expression varies depending on the nature of the gene.

Components: The ORF clone is ion-exchange column purified and shipped in a 2D barcoded Matrix tube containing 10ug of transfection-ready, dried plasmid DNA (reconstitute with 100 ul of water).

RefSeq: [NM_001278929.1, NP_001265858.1](#)
RefSeq Size: 2076 bp
RefSeq ORF: 1473 bp
Locus ID: 23398
UniProt ID: [Q96BP3](#)
Cytogenetics: 5q12.3
MW: 56.1 kDa

Gene Summary: PPIase that catalyzes the cis-trans isomerization of proline imidic peptide bonds in oligopeptides and may therefore assist protein folding (PubMed:20676357). May be involved in pre-mRNA splicing (PubMed:11991638).[UniProtKB/Swiss-Prot Function]

Product images:



Circular map for RG238525