

Product datasheet for **RG238508**

Lipoamide Dehydrogenase (DLD) (NM_001289751) Human Tagged ORF Clone

Product data:

Product Type:	Expression Plasmids
Product Name:	Lipoamide Dehydrogenase (DLD) (NM_001289751) Human Tagged ORF Clone
Tag:	TurboGFP
Symbol:	DLD
Synonyms:	DLDD; DLDH; E3; GCSL; LAD; OGDC-E3; PHE3
Mammalian Cell Selection:	Neomycin
Vector:	pCMV6-AC-GFP (PS100010)
E. coli Selection:	Ampicillin (100 ug/mL)



[View online »](#)

ORF Nucleotide Sequence:

>RG238508 representing NM_001289751.
 Blue=ORF Red=Cloning site Green=Tag(s)

```
GCTCGTTAGTGAACCGTCAGAATTTTGTAAACGACTCACTATAGGGCGGCCGGGAATTCGTGACTG
GATCCGGTACCGAGGAGATCTGCCGCCCGCATCGCC
ATGCAGAGCTGGAGTCGTGTACTGCTCCTTGCCCAAGAGAGGCCATTTCAATCGAATATCTCATGGC
CTACAGGGACTTTCTGCAGTGCCTCTGAGAAGTACGCAGATCAGCCGATTGATGCTGATGTAACAGTT
ATAGTTCTGGTCTGGAGGATATGTTGCTGCTATTAAGCTGCCAGTTAGGCTTCAAGGCTTTATTG
AACAACTCTCATTATTACCATATGGCCATGAAAAGATTTTGCATCTAGAGGAATTGAAATGTCGGAA
GTTGCTTGAATTTAGACAAGATGATGGAGCAGAAGAGTACTGCAGTAAAAGCTTTAACAGGTGGAATT
GCCCACTATTCAAACAGAATAAGGTTGTTCAATGATGATGGAATGAAAAGATAACTGGCAAAAATCAA
GTCAGTCTACGAAAGCTGATGGCGCACTCAGGTTATTGATACAAGAACATTCTATAGCCACGGGT
TCAGAAGTACTCCTTTCTGGAATCACGATAGATGAAGATAACAATAGTGCATCTACAGGTGCTTTA
TCTTTAAAAAAGTTCCAGAAAAGATGGTTGTTATTGGTGCAGGAGTAATAGGTGATGAATTGGGTTCA
GTTTGGCAAAGACTTGGTGCAGATGTGACAGCAGTTGAATTTTTAGGTCATGTAGGTGGAGTTGGAATT
GATATGGAGATATCTAAAACCTTCAACGCATCCTTCAAAAACAGGGGTTAAATTTAAATTTGAATACA
AAGGTTACTGGTCTACCAAGAAGTCAGATGAAAATTTGATGTTTCTATTGAAGCTGCTCTGGTGGT
AAAGCTGAAGTTACTTGTGATGACTCTTGGTTTGCATTGGCCGACGACCCTTTACTAAGAATTTG
GGACTAGAAGAGCTGGGAATTGAACTAGATCCCAGAGGTAGAATCCAGTCAATACCAGATTTCAAAC
AAAATTTCAAATATCTATGCCATTGGTGTAGTGTGCTGGTCCAATGCTGGCTCACAAGCAGAGGAT
GAAGGCATTATCTGTGTTGAAGGAATGGCTGGTGGTGTGTCACATTGACTACAATTGTGTGCCATCA
GTGATTTACACACACCCCTGAAGTTGCTTGGTTGGCAAATCAGAAGAGCAGTTGAAAGAAGAGGGTATT
GAGTACAAGTTGGGAAATTTCCATTTGCTGCTAACAGCAGAGCTAAGACAAATGCTGACACAGATGGC
ATGGTGAAGATCCTTGGGCAGAAAATCGACAGACAGAGTACTGGGAGCACATATTCTTGGACCAGGTGCT
GGAGAAATGGTAAATGAAGCTGCTTGTGTTTGAATATGGAGCATCCTGTGAAGATATAGCTAGAGTC
TGTGATGCACATCCGACCTTATCAGAAGCTTTAGAGAAGCAAATCTTGTGCGTCATTTGGCAAATCA
ATCAACTTT
ACGCGTACGCGGCCGCTCGAG - GFP Tag - GTTTAAAC
```

Protein Sequence:

>Peptide sequence encoded by RG238508
 Blue=ORF Red=Cloning site Green=Tag(s)

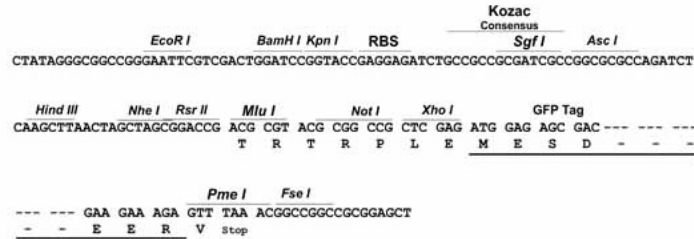
```
MQSWSRVYCSLAKRGHFNRISHGLQGLSAVPLRXYADQPIDADVTVIGSGPGGYVAAIKAAQLGFKALL
NNSHYHMAHGKDFASRGIEMSEVRLNLDKMMQKSTAVKALTGGIAHLFKQNKVVHVNNGYKGTGKNQ
VTATKADGGTQVIDTKNILIATGSEVTPFPGITIDEDTIVSSTGALSLKVPKMMVIGAGVIGVELGS
VWQRLGADVTAVEFLGHVGGVGDMEISKNFQRILQKQGFKFLNKTGATKSDGKIDVSI EAASGG
KAEVITCDVLLVCIGRRPFTKNLGLLEELGIELDPRGRIPVNTFRQTKIPNIYAIGDVVAGPMLAHKAED
EGIICVEGMAGGAVHIDYNCVPSVIYTHPEVAWVGKSEEQLKEEGIEYKVGKFPFAANSRAKTNADTDG
MVKILGQKSTDRVLGAHILGPGAGEMVNEAALALEYGASCEDIARVCHAHPPLSEAFREANLAASF GKS
INF
TRTRPLEMESDESGLPAMEIECRITGTLNGVEFELVGGEGTPEQGRMTNKMSTKGALTFSPYLLSHV
MGYGFYHFGTYPSGYENPFLHAINNGYTNTRIEKYEDGGVLHVSFSYRYEAGRVIGDFKVMGTGFPED
SVIFTDKIIRSNAIVEHLHPMGDNDLDGSFTRTFLRDGGYSSVVD SHMHFKSAIHPSILQNGGPMFA
FRRVEEDHSNTELGIVEYQHAFKTPDADAGEERV
```

Restriction Sites:

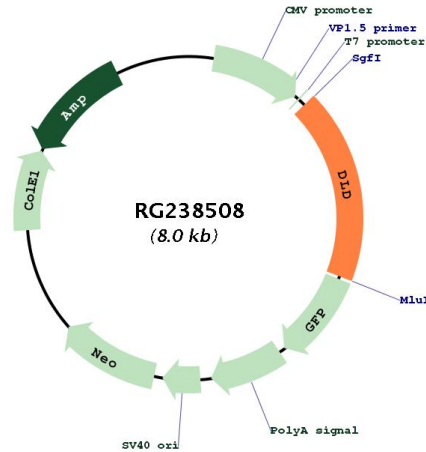
Sgfl-Mlul

Cloning Scheme:

Cloning sites used for ORF Shutting:



Plasmid Map:



ACCN: NM_001289751

ORF Size: 1458 bp

OTI Disclaimer: The molecular sequence of this clone aligns with the gene accession number as a point of reference only. However, individual transcript sequences of the same gene can differ through naturally occurring variations (e.g. polymorphisms), each with its own valid existence. This clone is substantially in agreement with the reference, but a complete review of all prevailing variants is recommended prior to use. [More info](#)

OTI Annotation: This clone was engineered to express the complete ORF with an expression tag. Expression varies depending on the nature of the gene.

Components: The ORF clone is ion-exchange column purified and shipped in a 2D barcoded Matrix tube containing 10ug of transfection-ready, dried plasmid DNA (reconstitute with 100 ul of water).

RefSeq: [NM_001289751.1](#), [NP_001276680.1](#)

RefSeq Size:	3544 bp
RefSeq ORF:	1461 bp
Locus ID:	1738
UniProt ID:	P09622
Cytogenetics:	7q31.1
Protein Families:	Druggable Genome
Protein Pathways:	Citrate cycle (TCA cycle), Glycine, serine and threonine metabolism, Glycolysis / Gluconeogenesis, Metabolic pathways, Pyruvate metabolism, Valine, leucine and isoleucine degradation
MW:	52.3 kDa
Gene Summary:	<p>This gene encodes a member of the class-I pyridine nucleotide-disulfide oxidoreductase family. The encoded protein has been identified as a moonlighting protein based on its ability to perform mechanistically distinct functions. In homodimeric form, the encoded protein functions as a dehydrogenase and is found in several multi-enzyme complexes that regulate energy metabolism. However, as a monomer, this protein can function as a protease. Mutations in this gene have been identified in patients with E3-deficient maple syrup urine disease and lipoamide dehydrogenase deficiency. Alternative splicing results in multiple transcript variants. [provided by RefSeq, Jan 2014]</p>