

## Product datasheet for **RG238495**

### CD30 (TNFRSF8) (NM\_001281430) Human Tagged ORF Clone

#### Product data:

Product Type:	Expression Plasmids
Product Name:	CD30 (TNFRSF8) (NM_001281430) Human Tagged ORF Clone
Tag:	TurboGFP
Symbol:	TNFRSF8
Synonyms:	CD30; D1S166E; Ki-1
Mammalian Cell Selection:	Neomycin
Vector:	pCMV6-AC-GFP (PS100010)
E. coli Selection:	Ampicillin (100 ug/mL)
ORF Nucleotide Sequence:	>RG238495 representing NM_001281430. Blue=ORF Red=Cloning site Green=Tag(s)

```
GCTCGTTTGTAGTGAACCGTCAGAATTTTGTAAACGACTACTATAGGGCCGCCGGGAATTCGTGACTG
GATCCGGTACCGAGGAGATCTGCCGCCGCGATCGCC
ATGTTCTGTTCCACGTCTGCCGTCAACTCCTGTGCCCGCTGCTTCTTCCATTCTGTCTGTCCGGCAGGG
ATGATTGTCAAGTTCCCAGGCACGGCGCAGAAGAACACGGTCTGTGAGCCGGCTTCCCCAGGGGTGAGC
CCTGCCTGTGCCAGCCCAGAGAAGTCAAGGAACCTCCAGTGGCACCATCCCCAGGCCAAGCCCACC
CCGGTGTCCCAGCAACCTCCAGTGCCAGCACCATGCCTGTAAGAGGGGGCACCCGCTCGCCAGGAA
GCTGCTTCTAAACTGACGAGGGCTCCCGACTCTCCCTCCTCTGTGGGAAGCCTAGTTCCAGTCCAGGT
CTGTCCCCAACACAGCCATGCCAGAGGGGTCTGGTGATTGCAGAAAGCAGTGTGAGCCGACTACTAC
CTGGACGAGGCCCGCCGCTGCACGGCCTGCGTGAGCTGTTCTCGAGATGACCTTGTGAGAAGACGCCA
TGTGCATGGAACCTCCTCCCGCACCTGCGAATGTCGACCTGGCATGATCTGTGCCACATCAGCCACCAAC
TCCTGTGCCCGCTGTGTCCCCTACCCAATCTGTGCAGCAGAGACGGTCACCAAGCCCCAGGATATGGCT
GAGAAGGACACCACCTTTGAGGCGCCACCCCTGGGGACCCAGCCGGACTGCAACCCACCCAGAGAAT
GGCGAGGCGCCTGCCAGCACCAGCCCCTCAGAGCTTGTGGTGGACTCCAGGCCAGTAAAGACGCTG
CCCATCCCAACCAGCGCTCCCGTCGCTCTCCTCCACGGGAAGCCGTTCTGGATGCAGGGCCAGTG
CTCTTCTGGGTGATCCTGGTGTGGTGTGGTGGTGGTCCAGCGCCTCCTCCTGTGCCACGGGAGG
GCCTGCAGGAAGGAATTCGGCAGAAGCTCCACCTGTGCTACCCGGTCCAGACCTCCAGCCCAAGCTA
GAGCTTGTGGATTCCAGACCCAGGAGGAGCTCAACGCTGAGGAGTGGTGGTGGTGGTGGTGGTGGTGGT
GCGGAAGAGCGAGGGTTAATGAGCCAGCCACTGATGGAGACCTGCCACAGCGTGGGGGCAGCCTACCTG
GAGAGCCTGCCGCTGCAGGATGCCAGCCCGCCGGGGGCCCTCGTCCCCAGGGACCTTCTGAGCCC
CGGGTGTCCACGGAGCACACCAATAACAAGATTGAGAAAATCTACATCATGAAGGCTGACACCGTGATC
GTGGGGACCGTGAAGGCTGAGCTGCCGGAGGGCCGGGGCTGGCGGGGCCAGCAGAGCCCGAGTTGGAG
GAGGAGCTGGAGGCGGACCATACCCCCACTACCCGAGCAGGAGACAGAACCCTCTGGGCAGCTGC
AGCGATGTCATGCTCTCAGTGAAGAGGAAGGAAAGAAGACCCCTTGCCACAGCTGCCTCTGAAAG
ACGCGTACGCGGCCGCTCGAG - GFP Tag - GTTTAAAC
```



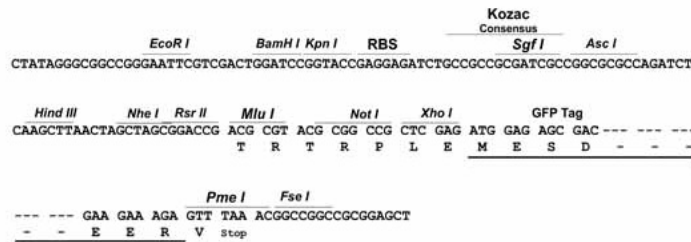
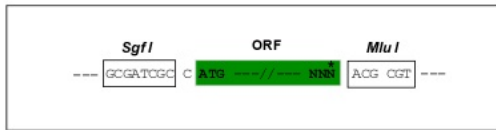
Protein Sequence: >Peptide sequence encoded by RG238495  
 Blue=ORF Red=Cloning site Green=Tag(s)

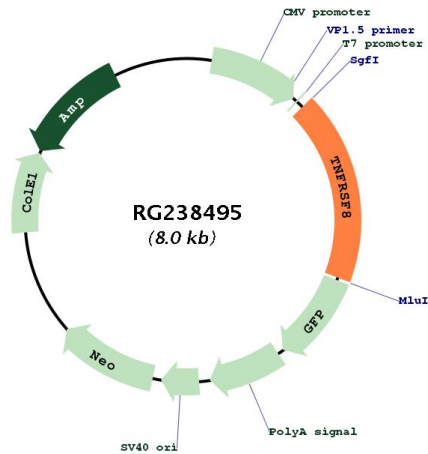
MFCSTSAVNSCARCFHFSVCPAGMIVKFPGTAQKNTVCEPASPGVSPACASPENCKEPSSGTIPQAKPT  
 PVSPATSSASTMPVRRGTRLAQEAAASKL TRAPDSPSSVGRPSSDPGLSPTQPCPEGSGDCRKCQCEPDYY  
 LDEAGRCTACVSCSRDDLVEKTPCAWNSSRTCECRPGMICATSATNSCARCVYPYICAAETVTKPQDMA  
 EKDTTTEAPPLGTQDCNPTPENGEAPASTSPTQSLLVDSQASKTLP IPTSAPVALSSTGKPVLDAGPV  
 LFWIILVLVVVVGSSAFLLCHRRACRKRIRQKLHL CYPVQTSQPKLELVDSRPRRSSTLRSGASVTEPV  
 AEERGLMSQPLMETCHSVGAAYLESPLQDASPAGGPSSPRDLEPRVSTEHTNNKIEKIYIMKADTVI  
 VGTVKAELEPEGRGLAGPAEPELEEELEADHTPHYEQETEPPLGSCSDVMLSVEEEGKEDPLPTAASGK  
**TRTRPLEMESDESGLPAMEIECRITGTLNGVEFELVGGEGTPEQGRMTNKMSTKGALTFSPYLLSHV**  
 MGYGFYHFGTYPSTYENPFLHAINNGGYNTRIEKYEDGGVLHVSFSYRYEAGRVIGDFKVMGTGFPED  
 SVIFTDKIIRSNATVEHLHPMGDNDLDGSFTRTFSLRDGGYSSVVD SHMHFKSAIHPSILQNGGPMFA  
 FRRVEEDHSNTELGIVEYQHAFKTPDADAGEERV

Restriction Sites: SgfI-MluI

Cloning Scheme:

Cloning sites used for ORF Shutting:



**Plasmid Map:**


**ACCN:** NM\_001281430

**ORF Size:** 1449 bp

**OTI Disclaimer:** The molecular sequence of this clone aligns with the gene accession number as a point of reference only. However, individual transcript sequences of the same gene can differ through naturally occurring variations (e.g. polymorphisms), each with its own valid existence. This clone is substantially in agreement with the reference, but a complete review of all prevailing variants is recommended prior to use. [More info](#)

**OTI Annotation:** This clone was engineered to express the complete ORF with an expression tag. Expression varies depending on the nature of the gene.

**Components:** The ORF clone is ion-exchange column purified and shipped in a 2D barcoded Matrix tube containing 10ug of transfection-ready, dried plasmid DNA (reconstitute with 100 ul of water).

**RefSeq:** [NM\\_001281430.2](#), [NP\\_001268359.2](#)

**RefSeq Size:** 3616 bp

**RefSeq ORF:** 1452 bp

**Locus ID:** 943

**UniProt ID:** [P28908](#)

**Cytogenetics:** 1p36.22

**Protein Families:** Druggable Genome, ES Cell Differentiation/IPS, Stem cell - Pluripotency, Transmembrane

**Protein Pathways:** Cytokine-cytokine receptor interaction

**MW:** 51.4 kDa

**Gene Summary:**

The protein encoded by this gene is a member of the TNF-receptor superfamily. This receptor is expressed by activated, but not by resting, T and B cells. TRAF2 and TRAF5 can interact with this receptor, and mediate the signal transduction that leads to the activation of NF-kappaB. This receptor is a positive regulator of apoptosis, and also has been shown to limit the proliferative potential of autoreactive CD8 effector T cells and protect the body against autoimmunity. Two alternatively spliced transcript variants of this gene encoding distinct isoforms have been reported. [provided by RefSeq, Jul 2008]