

Product datasheet for **RG238493**

BTK (NM_001287345) Human Tagged ORF Clone

Product data:

Product Type:	Expression Plasmids
Product Name:	BTK (NM_001287345) Human Tagged ORF Clone
Tag:	TurboGFP
Symbol:	BTK
Synonyms:	AGMX1; AT; ATK; BPK; IGHD3; IMD1; PSCTK1; XLA
Mammalian Cell Selection:	Neomycin
Vector:	pCMV6-AC-GFP (PS100010)
E. coli Selection:	Ampicillin (100 ug/mL)
ORF Nucleotide Sequence:	>RG238493 representing NM_001287345. Blue=ORF Red=Cloning site Green=Tag(s)

```
GCTCGTTTGTGAAACCGTCAGAATTTGTAAACGACTCACTATAGGGCGCCGGGAATTCGTCGACTG
GATCCGGTACCGAGGAGATCTGCCGCCGCGATCGCC
ATGGCCGCGAGTGATTCTGGAGAGCATCTTTCTGAAGCGATCCCAACAGAAAAAGAAAACATCACCTCTA
AACTTCAAGAAGCGCCTGTTTCTTTGACCGTGCACAACTCTCCTACTATGAGTATGACTTTGAACGT
GGGAGAAGAGGCAGTAAGAAGGGTTCAATAGATGTTGAGAAGTCACTTGTGTTGAAACAGTGGTTCCT
GAAAAAATCCTCCTCCAGAAAGACAGATTCGAGAAGAGGTGAAGAGTCCAGTGAATGGAGCAAATT
TCAATCATTGAAAGGTTCCCTTATCCCTCCAGGTTGTATATGATGAAGGGCCTCTACGTCTTCTCC
CCAAGTGAAGAACTAAGGAAGCGGTGGATTACCAGCTCAAAAACGTAATCCGGTACAACAGTGATCTG
GTTCAGAAATATCACCTTGCTTCTGGATCGATGGGCAGTATCTCTGCTGCTCAGACAGCCAAAAT
GCTATGGGCTGCCAAATTTGGAGAACAGGAATGGAAGCTTAAAACCTGGGAGTTCTCACCGGAAGACA
AAAAAGCCTTTCCCAACGCCTGAGGAGGACCAGATCTTAAAAAGCCACTACCGCCTGAGCCAGCA
GCAGCACCAGTCTCCACAAGTGAGCTGAAAAAGGTTGTGGCCCTTTATGATTACATGCCAATGAATGCA
AATGATCTACAGTCCGGAAGGGTGATGAATATTTTATCTTGGAGGAAAGCAACTACCATGGTGGAGA
GCACGAGATAAAAATGGGCAGGAAGGCTACATTCCTAGTAACTATGTCAGTGAAGCAGAAGACTCCATA
GAAATGTATGAGTGGTATTCCAAACACATGACTCGGAGTCAGGCTGAGCAACTGCTAAAGCAAGAGGGG
AAAGAAGGAGGTTTCATTGTGAGAGCTCCAGCAAAGCTGGCAAATATACAGTGTCTGTGTTTGTAAA
TCCACAGGGGACCCTCAAGGGGTGATACGTCATTATGTTGTGTGTTCCACACCTCAGAGCCAGTATTAC
CTGGCAGCTCGAAACTGTTTGGTAAACGATCAAGGAGTTGTTAAAGTATCTGATTTCCGCCCTGTCCAGG
TATGTCCTGGATGATGAATACACAAGCTCAGTAGGCTCCAAATTTCCAGTCCGGTGGTCCCACCGGAA
GTCCTGATGTATAGCAAGTTCAGCAGCAAATCTGACATTTGGGCTTTTGGGGTTTTGATGTGGGAAATT
TACTCCCTGGGGAAGATGCCATATGAGAGATTTACTAACAGTGAAGTGTGACTGCTGAACACATTGCCAAGGC
CTACGTCTACAGGCCTCATCTGGCTCAGAGAAGGTATATACCATCATGTACAGTTGCTGGCATGAG
AAAGCAGATGAGCGTCCCACTTTCAAAATCTTCTGAGCAATATTCTAGATGTCATGGATGAAGAATCC
ACGCGTACGCGGCCGCTCGAG - GFP Tag - GTTTAAAC
```



View online »

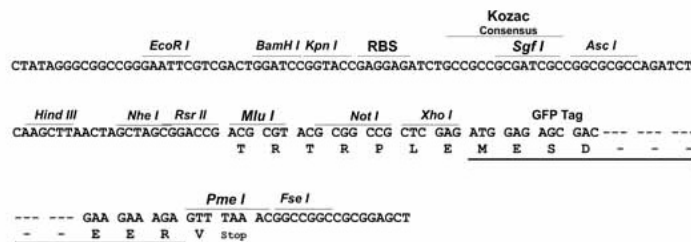
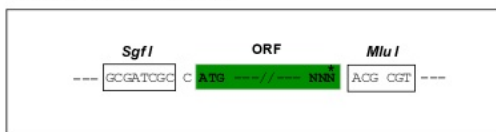
Protein Sequence: >Peptide sequence encoded by RG238493
 Blue=ORF Red=Cloning site Green=Tag(s)

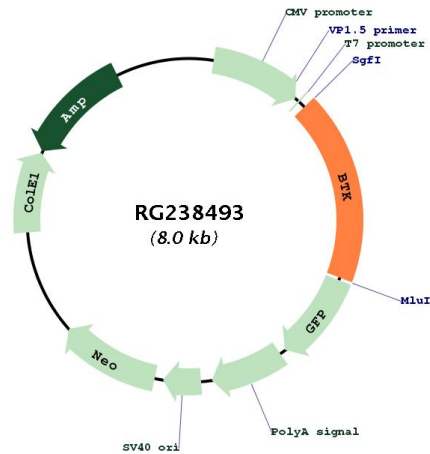
MAAVILESIFLKRSQKKKTSPLNFKKRLFLLTVHKLSYIEYDFERGRGSKKGSIDVEKITCVETVVP
 EKNPPPERQIPRRGEESSEMEQISIIERFPYPFQVVYDEGPLYVFSPTTEELRKRWIHQLKNVIRYNSDL
 VQKYHPCFWIDGQYLCCSQTAKNAMGCQILENRNGSLKPGSSHRKTKKPLPPTPEEDQILKKPLPEPA
 AAPVSTSELKKVVALYDYMPMNANDLQLRKGDYFYLEESNLPWWRARDKNGQEGYIPSNYVTEADSI
 EMYEWYSKHMTRSQAQELLLKQEGKEGGFIVRDSSKAGKTYVSVFAKSTGDPQGVI RHYVVCSTPQSQYY
 LAARNCLVNDQGVVKSDFGLSRVYLDDEYTSVSGSKFPVRWSPPEVLMYSKFSSKSDIWFAGVLMWEI
 YSLGKMPYERFTNSETAEHIAQGLRLYRPHLASEKVYTIMYSCWHEKADERPTFKILLSNILDVMDEES
TRTRPLEMESDESGLPAMEIECRITGTLNGVEFELVGGGEGTPEQGRMTNKMSTKGALTFSPYLLSHV
 MGYGFYHFGTYPGYENPFLHAINNGGYNTRIEKYEDGGVLHVSFSYRYEAGRVIGDFKVMGTGFPEP
 SVIFTDKIIRSNATVEHLHPMGDNDLDGSFTRTFLRDGGYSSVVD SHMHFKA IHP SILQNGGPMFA
 FRRVEEDHSNTELGIVEYQHAFKTPDADAGEERV

Restriction Sites: SgfI-MluI

Cloning Scheme:

Cloning sites used for ORF Shutting:



Plasmid Map:


ACCN:	NM_001287345
ORF Size:	1449 bp
OTI Disclaimer:	The molecular sequence of this clone aligns with the gene accession number as a point of reference only. However, individual transcript sequences of the same gene can differ through naturally occurring variations (e.g. polymorphisms), each with its own valid existence. This clone is substantially in agreement with the reference, but a complete review of all prevailing variants is recommended prior to use. More info
OTI Annotation:	This clone was engineered to express the complete ORF with an expression tag. Expression varies depending on the nature of the gene.
Components:	The ORF clone is ion-exchange column purified and shipped in a 2D barcoded Matrix tube containing 10ug of transfection-ready, dried plasmid DNA (reconstitute with 100 ul of water).
RefSeq:	NM_001287345.1 , NP_001274274.1
RefSeq Size:	2248 bp
RefSeq ORF:	1452 bp
Locus ID:	695
UniProt ID:	Q06187
Cytogenetics:	Xq22.1
Protein Families:	Druggable Genome, Protein Kinase
Protein Pathways:	B cell receptor signaling pathway, Fc epsilon RI signaling pathway, Primary immunodeficiency
MW:	56.3 kDa

Gene Summary:

The protein encoded by this gene plays a crucial role in B-cell development. Mutations in this gene cause X-linked agammaglobulinemia type 1, which is an immunodeficiency characterized by the failure to produce mature B lymphocytes, and associated with a failure of Ig heavy chain rearrangement. Alternative splicing results in multiple transcript variants encoding different isoforms. [provided by RefSeq, Dec 2013]