

## Product datasheet for **RG238489**

### PXK (NM\_001289100) Human Tagged ORF Clone

#### Product data:

Product Type:	Expression Plasmids
Product Name:	PXK (NM_001289100) Human Tagged ORF Clone
Tag:	TurboGFP
Symbol:	PXK
Synonyms:	MONAKA; SLOB
Mammalian Cell Selection:	Neomycin
Vector:	pCMV6-AC-GFP (PS100010)
E. coli Selection:	Ampicillin (100 ug/mL)
ORF Nucleotide Sequence:	>RG238489 representing NM_001289100. Blue=ORF Red=Cloning site Green=Tag(s)

```
GCTCGTTTGTAGTGAACCGTCAGAATTTTGTAAACGACTACTATAGGGCCGCCGGGAATTCGTCGACTG
GATCCGGTACCGAGGAGATCTGCCGCCGCGATCGCC
ATGGCCTTCATGGAGAAGCCGCCAGCCGCAAGGTGCTGCTGGACGACACGGTGCCGCTGACAGCAGCC
ATCGAGGCGAGCCAGAGCCTGCAGTCCCACACGATTGCAGGCCTAAGTCTACCTTCTCCCAAAAAA
TTGATTGGTAACATGGATCGTGAATTCATAGCTGAAAGGCAGAAAGGTCTTCAGAACTATCTCAACGTG
ATCACAACAAATCATATCTTGTCTAATTGTGAGCTGGTTAAGAAGTTTTAGATCCAAACAACTATTCC
GCAAATACTAGATGACCTTGCACAGGTTCCATGTTCTCCGATCAGAACCAAAGTGGGAGGTG
GTGGAACCTTTGAAAGACATAGGTTGGAGAATAAGGAAGAAATATTTCTTGATGAAGATAAAAATCAG
CCAAAGGAACGGCTAGTGTAAAGCTGGGCTGACCTTGGCCAGACAAGTATTTGTGATGATGATGATGATG
CAGTGTCTAATCAAACCTCTGCCTTCTGTTTGCACCCTTACATCTATCGGGTTACCTTTGCCACAGCT
AATGAATCCTCAGCGTTGCTAATTAGGATGTTTAAACGAAAAGGGAACATTGAAGGATCTGATCTACAAG
GCAAAACCAAAAGACCCATTTCTAAAGAAGTACTGCAACCCTAAGAAGATTCAGGGCCTGGAACCTCCAG
CAAATAAAACATATGGACGGCAAAATATTAGAGGTAAGTGAAGTTTCTCATGACAAGGGATTCCCTTAT
GGGCATCTTACGCCTCCAATGTGATGCTCGATGGGACACTTGCCGGCTGCTGGACCTTGAGAATTCC
TTATTGGGCTGCCTTCTTACCGATCTTATTTTTACAATTCAGGAAAATCAATACATTGAAAAGT
GTGGATGTCACCTGCTTTGGCCACTTACTGTATGAAATGACTTATGGACGACCAGCAGCTCGGTGCTC
GTGGACTCCTTCCCTCTGCCCGTCCATGGCTGTGGTGGCCGTGTTGGAGTCTACGCTGTCTTGTGAA
GCCTGTAAAAATGGCATGCCTACCATCTCCCGCTCTTACAGATGCCATTATTCAGCGATGTTTTACTA
ACCACTTCTGAAAAACCACAGTTAAGATCCCTACAAAGTTAAAAGAGGCATTGAGAATTGCCAAAGAA
TGTATAGAGAAGAGACTAATTGAGGAACAGAAACAGATTCACCAGCATCGAAGACTGACAAGAGCTCAG
TCCCACCATGGATCTGAGGAGGAAAGAAAAAAGAAAGATTTTGTGCGAAAGAAAGTCAAACGATCT
GCTCTTAAAAATAGTGAAGAGCATTGAGCAAGTACAGCAACTCCAATAATTCAGCAGGATCTGGGGCC
AGCTCACCTCTCAGTCCCGTCTATCGCAACTCCACCCTCTACATCAGTAGAGCATGCACCATT
ACGCGTACGCGGCCGCTCGAG - GFP Tag - GTTTAAAC
```



[View online >](#)

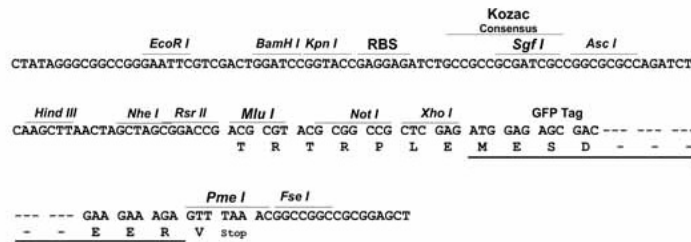
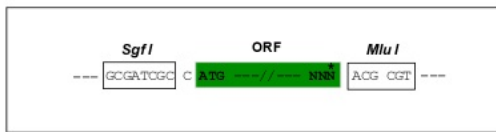
Protein Sequence: >Peptide sequence encoded by RG238489  
 Blue=ORF Red=Cloning site Green=Tag(s)

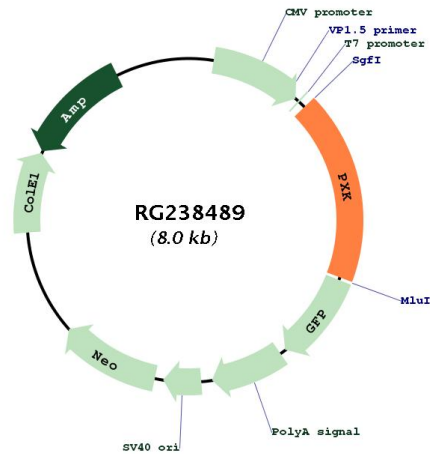
MAFMEKPPAGKVLLDDTVPLTAAIEASQSLQSHTIAGLSLPLPPKKLIGNMDREFIAERQKGLQNYLNV  
 ITTNHILSNCEL VKKFLDPNNYSANYTEIALQQVSMFFRSEPKWEVVEPLKDIGWRIRKKYFLMKIKNQ  
 PKERLVLSWADLGPDKYLSKDFQCLIKLLPSC LHPIYIRVTFATANESSALLIRMFNEKGLKDLIYK  
 AKPKDPFLKKYCNPKKIQGLELQQIKTYGRQILEVLKFLHDKGFPYGHLSASNVMLDGDTCRLDLENS  
 LLGLPSFYRSYFSQFRKINTLESVDVHCFGHLLYEMTYGRPPDSVPVDSFPPAPSMAVVAVLESTLSCE  
 ACKNGMPTISRLLQMP LFSVDVLLTTSEKQFKIPTKLKEALRIAKECIEKRLIEEQKQIHQHRRLTRAQ  
 SHHGSEEEERKKRILARKKSKRSALENSEEHS AKYSNSNNSAGSGASSPLTSPSSPTPPSTVEHAPF  
 TRTRPLEMESDESGLPAMEIECRITGTLNGVEFELVGGGEGTPEQGRMTNKMSTKGALTFSPYLLSHV  
 MGYGFYHFGTYPSGYENPFLHAINNGGYNTRIEKYEDGGVLHVSFSYRYEAGRVIGDFKVMGTGFPED  
 SVIFTDKIIRSNATVEHLHPMGDNDLDGSFTRTFLRDGGYSSVVD SHMHFKSAIHPSILQNGGPMFA  
 FRRVEEDHSNTELGIVEYQHAFKTPDADAGEERV

Restriction Sites: SgfI-MluI

Cloning Scheme:

Cloning sites used for ORF Shutting:



**Plasmid Map:**


<b>ACCN:</b>	NM_001289100
<b>ORF Size:</b>	1446 bp
<b>OTI Disclaimer:</b>	The molecular sequence of this clone aligns with the gene accession number as a point of reference only. However, individual transcript sequences of the same gene can differ through naturally occurring variations (e.g. polymorphisms), each with its own valid existence. This clone is substantially in agreement with the reference, but a complete review of all prevailing variants is recommended prior to use. <a href="#">More info</a>
<b>OTI Annotation:</b>	This clone was engineered to express the complete ORF with an expression tag. Expression varies depending on the nature of the gene.
<b>Components:</b>	The ORF clone is ion-exchange column purified and shipped in a 2D barcoded Matrix tube containing 10ug of transfection-ready, dried plasmid DNA (reconstitute with 100 ul of water).
<b>RefSeq:</b>	<a href="#">NM_001289100.1</a> , <a href="#">NP_001276029.1</a>
<b>RefSeq Size:</b>	2954 bp
<b>RefSeq ORF:</b>	1449 bp
<b>Locus ID:</b>	54899
<b>UniProt ID:</b>	<a href="#">Q7Z7A4</a>
<b>Cytogenetics:</b>	3p14.3
<b>Protein Families:</b>	Druggable Genome, Protein Kinase
<b>MW:</b>	55.2 kDa

**Gene Summary:**

This gene encodes a phox (PX) domain-containing protein which may be involved in synaptic transmission and the ligand-induced internalization and degradation of epidermal growth factors. Variations in this gene may be associated with susceptibility to systemic lupus erythematosus (SLE). Alternative splicing results in multiple transcript variants. [provided by RefSeq, Jan 2014]