

Product datasheet for **RG238485**

ALS2CR15 (ICA1L) (NM_001288622) Human Tagged ORF Clone

Product data:

Product Type:	Expression Plasmids
Product Name:	ALS2CR15 (ICA1L) (NM_001288622) Human Tagged ORF Clone
Tag:	TurboGFP
Symbol:	ALS2CR15
Synonyms:	ALS2CR14; ALS2CR15
Mammalian Cell Selection:	Neomycin
Vector:	pCMV6-AC-GFP (PS100010)
E. coli Selection:	Ampicillin (100 ug/mL)
ORF Nucleotide Sequence:	>RG238485 representing NM_001288622. Blue=ORF Red=Cloning site Green=Tag(s)

```
GCTCGTTTGTAGTAACCGTCAGAATTTTGTAAACGACTCACTATAGGGCGCCGGGAATTCGTCGACTG
GATCCGGTACCGAGGAGATCTGCCGCCGCGATCGCC
ATGGATTCCTTTGGGCAACCCAGACCAGAAGATAATCAGTCAGTAGTCAGAAGAATGCAAAAAGAAATAC
TGGAAAATAACAGGTCTTTATCAAAGCAACAGGAAAAAAGAGGATGAGCACTTGGTGGCGTCTGAT
GCTGAAGTGGATGCTAACTTGAGGTTTTTCACTCTGTTCAGAGACATGCACTGAACCTTCTGAAGATA
ATCGAGAAATACCAGCTAAGACTCAATGTTATATCAGAGGAAGAAAATGAGCTAGGGCTCTTTTTAAAA
TTTCAAGCAGAACGGGATGCAACTCAAGCTGGCAAAATGATGGATGCCACTGGCAAGGCACCTTTGTTCT
TCAGCCAAGCAAAGATTGCCCTGTGTACTCCTCTGTCTCGTCTGAAGCAAGAAGTAGCAACATTCAGT
CAAAGGGCAGTATCTGATACCTTGATGACAATTAATCGGATGGAGCAGGCACGCACAGAATACAGAGGA
GCTCTACTGTGGATGAAAGATGTATCCCAAGAGCTGGACCCAGACACCTTAAAGCAAATGAAAAAGTTT
AGAAAAGTACAGATGCAAGTGAAGAAATAGCAAAGCTTCTTTTGACAAGTTAAAGATGGATGTTTGTGAG
AAAGTGGATTTACTTGGAGCTAGTCGTCGAATATGCTATCTCATTGCTCACTACCTACCAGAGAACA
CTGCTTGGATTCTGGAAGAAAACAGCTCGAATGATGTCCCAAATTCATGAAGCCTGTATTGGCTTTTCAT
CCGATGATTTTGTAGCTCTCAAGCAACTACAAGACACGCCAAGCAAGATTAGTGAAGACAATAAAGAT
GAACAAATAGGCGGTTTTCTTACTGAACAGCTCAATAAGCTAGTTTTGTCTGATGAGGAAGCAAGCTTT
GAGAGTGAACAAGCAAACAAGATCACAATGAAAAACATTCTCAAATGAGAGAATTTGGAGCACCTCAG
TTTTCTAACTCTGAAAATGTTGCAAAGATCTACCTGTAGATTCATTGGAAGGAGAAGATTTTGAGAAG
GAATTCTCATTTCTGAACAACCTCCTAAGTTCTGGTTCTTCAAGTACTAGTGAATTTACCAAGAATGC
CAGACTGCCTTTGGGAGCCCCAGTGCCAGTCTCACATCCCAGGAGCCTCCATGGGGTCTGAGCCCCCTC
GCTCATTCTTCTCGATTCTTCTTCAACTCTTTGACCTTGGCTTTCATGTGGCTGGAGCGTTCAAC
AACTGGGTCTCCCAAGAGGAATCAGAACTTTGTCTTTCACACACTGATAACCAGCCAGTGCCTTCACAG
AGTCCAAAGAAATTAACAAGATCCCCCAACAATGGCAACCAAGACATGTCAGCCTGGTTCAATCTGTTT
GCAGACTTGGATCCACTTCAAACCCAGATGCTATTGGACTCAGATGATGAACCTCTTAATGCT
ACGCGTACGCGGCCGCTCGAG - GFP Tag - GTTTAAAC
```

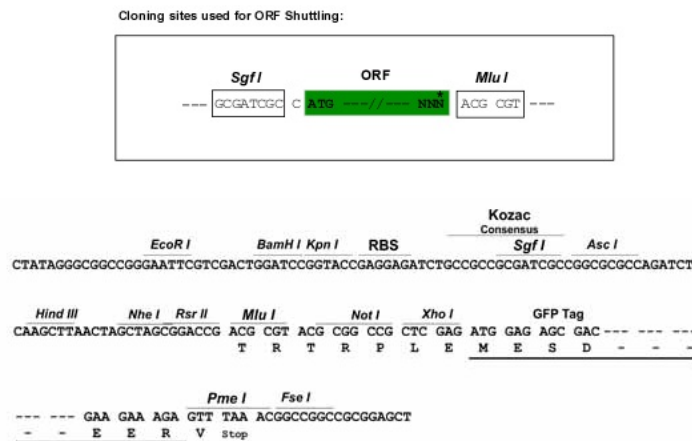


Protein Sequence: >Peptide sequence encoded by RG238485
 Blue=ORF Red=Cloning site Green=Tag(s)

MDSFGQRPEDNQSVRRMQKKYWKTKQVFIKATGKKEDEHLVASDAELDAKLEVFHSVQETCTELLKI
 IEKYQLRLNVISEEENELGLFLKFQERDATQAGKMDATGKALCSSAQRLALCTPLSRLKQEVATFS
 QRAVSDTLMTINRMEQARTEYRGALLWMKDVSQELDPDTLKQMEKFRKVMQVRNSKASFDLKMDCVQ
 KVDLLGASRCNMLSHSLTTYQRTLLGFWKKTARMMSQIHEACIGFHPYDFVALKQLQDTPSKI SEDNKD
 EQIGGFLTEQLNKLVLSDDEEASFEEQANKDHNEKHSQMREFGAPQFSNSENVAKDLPVDSLEGEDEFK
 EFSFLNLLSSGSSSTSEFTQEQQTAFGSPASLTSQEPSMGSEPLAHSRFLPSQLFDLGFHVAGAFN
 NWSQEESELCLSHDNQPVPSQSPKLLTRSPNNGNQDMSAWNLFADLDPLSNPDAIGHSDDELLNA
TRTRPLEMESDESGLPAMEIECRITGTLNGVEFELVGGEGTPEQGRMTNKMSTKGALTFSPYLLSHV
 MGYGFYHFGTYPSTYENPFLHAINNGGYNTRIEKYEDGGVLHVSFSYRYEAGRVIGDFKVMGTGFPED
 SVIFTDKIIIRSNATVEHLHPMGDNDLDGSFTRTFLRDGGYSSVVDSHMHFKSAIHPSILQNGGPMFA
 FRRVEEDHSNTELGIVEYQHAFKTPDADAGEERV

Restriction Sites: SgfI-MluI

Cloning Scheme:



ACCN: NM_001288622

ORF Size: 1446 bp

OTI Disclaimer: The molecular sequence of this clone aligns with the gene accession number as a point of reference only. However, individual transcript sequences of the same gene can differ through naturally occurring variations (e.g. polymorphisms), each with its own valid existence. This clone is substantially in agreement with the reference, but a complete review of all prevailing variants is recommended prior to use. [More info](#)

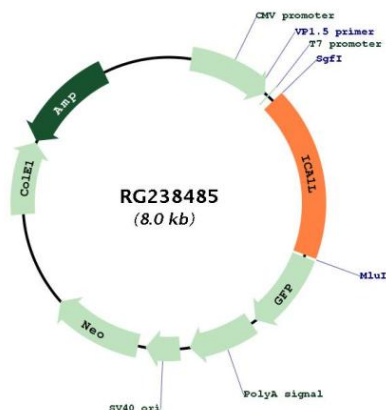
OTI Annotation: This clone was engineered to express the complete ORF with an expression tag. Expression varies depending on the nature of the gene.

Components: The ORF clone is ion-exchange column purified and shipped in a 2D barcoded Matrix tube containing 10ug of transfection-ready, dried plasmid DNA (reconstitute with 100 ul of water).

RefSeq: [NM_001288622.2](#)

RefSeq Size: 8206 bp
 RefSeq ORF: 1449 bp
 Locus ID: 130026
 UniProt ID: [Q8NDH6](#)
 Cytogenetics: 2q33.2
 MW: 54.4 kDa

Product images:



Circular map for RG238485