

Product datasheet for **RG238481**

PLXDC2 (NM_001282736) Human Tagged ORF Clone

Product data:

Product Type:	Expression Plasmids
Product Name:	PLXDC2 (NM_001282736) Human Tagged ORF Clone
Tag:	TurboGFP
Symbol:	PLXDC2
Synonyms:	TEM7R
Mammalian Cell Selection:	Neomycin
Vector:	pCMV6-AC-GFP (PS100010)
E. coli Selection:	Ampicillin (100 ug/mL)
ORF Nucleotide Sequence:	>RG238481 representing NM_001282736. Blue=ORF Red=Cloning site Green=Tag(s)

```
GCTCGTTTGTAGTAACCGTCAGAATTTTGTAAACGACTACTATAGGGCGCCGGGAATTCGTCGACTG
GATCCGGTACCGAGGAGATCTGCCGCCGCGATCGCC
ATGGCGAGGTTCCCGAAGGCCGACCTGGCCGCTGCAGGAGTTATGTTACTTTGCCACTTCTTCACGGAC
CAGTTTCAGTTCGCCGATGGGAAACCCGGAGACCAAAATCCTTGATTGGCAGTATGGAGTTACTCAGGCC
TTCCCTCACACAGAGGAGGAGGTGGAAGTTGATTCACACGCGTACAGCCACAGGTGAAAAGAACTTG
GACTTTCTCAAGGCGGTAGACACGAACCGAGCAAGCGTCGGCCAAGACTCTCTGAGCCAGAAGCTTC
ACAGACCTGCTGCTGGATGATGGGCAGGACAATAACACTCAGATCGAGAGAGTGAATCTGCTCTCGAT
TTTCCATTTTATGGCCACTTCTACGTGAAATCACTGTGGCAACCGGGGTTTCATATACACTGGAGAA
GTCGTACATCGAATGCTAACAGCCACACAGTACATAGCACCTTAAATGGCAAATTCGATCCCAGTGTA
TCCAGAAATTCAACTGTCAGATATTTTGATAATGGCACAGCACTTGTGGTCCAGTGGGACCATGTACAT
CTCCAGGATAATTATAACCTGGGAAGCTTCACATTCCAGGCAACCTGCTCATGGATGGACGAATCATC
TTTGGATACAAAGAAATTCCTGTCTTGGTCACACAGATAAGTTCAACCAATCATCCAGTGAAGTCGGA
CTGTCCGATGCATTTGTCGTTGTCCACAGGATCCAACAAATCCCAATGTTTGAAGAAGAACAATTTAT
GAATACCACCGAGTAGAGCTACAAATGTCAAAAATACCAACATTTCCGGCTGTGGAGATGACCCATTA
CCCACATGCCTCCAGTTTAAAGATGTGGCCCTGTGTATCTTCTCAGATTGGCTTCAACTGCAGTTGG
TGTAGTAAACTTCAAAGATGTTCCAGTGGATTTGATCGTATCGGCAGGACTGGGTGGACAGTGGATGC
CCTGAAGAGTCAAAGAGAAGATGTGTGAGAATACAGAACCAGTGGAAACTTCTTCTCGAACCCACA
ACCGTAGGAGCGACAACCACCCAGTTCAGGGTCTTAACCTACCACAGAAGAGCAGTGACTTCTCAGTTT
CCCACAGCCTCCCTACAGAAGATGATACCAAGATAGCACTACATCTAAAAGATAATGGAGCTTCTACA
GATGACAGTGCAGCTGAGAAGAAAGGGGAACCTCCACGCTGGCCTCATCATTGGAATCCTCATCTG
GTCCTCATTGTAGCCACAGCCATTCTTGTGACAGTCTATATGTATCACCACCAACATCAGCAGCCAGC
ATCTTCTTTATTGAGAGACGCCAAGCAGATGGCCTGCGATGAAGTTTGAAGAGGCTCTGGACATCCT
GCCTATGCTGAAGTTGAACAGTTGGAGAGAAAGAAGGCTTTATTGTATCAGAGCAGTGC
AGCGGACCGACCGGTACGCGGCCGCTCGAG - GFP Tag - GTTAAAC
```



[View online »](#)

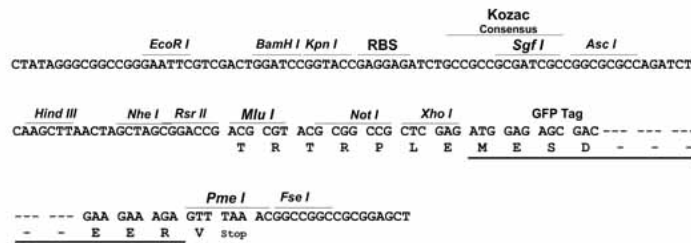
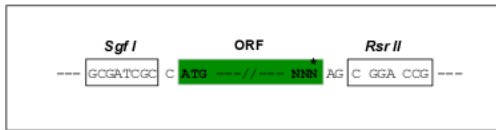
Protein Sequence: >Peptide sequence encoded by RG238481
 Blue=ORF Red=Cloning site Green=Tag(s)

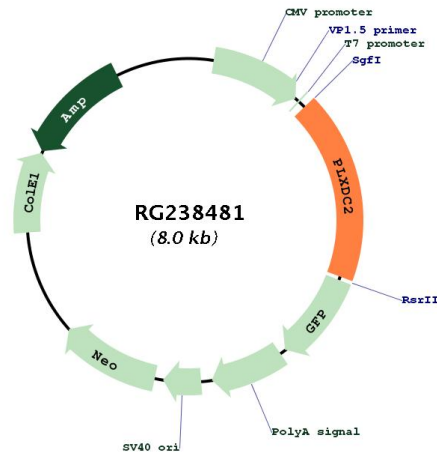
MARFPKADLAAGVMLLCHFFTDQFQFADGKPGDQILDWQYGVTAQFPHTEEVEVDSHAYSHRWKRNLD
 DFLKAVDTNRSVGDSPPEPRSFDTLLDDGQDNNTQIERVNLSDFFPFYGHFLREITVATGGFIYTGE
 VVHRMLTATQYIAPLMANFDPVSRNSTVRYFDNGTALVVQWDHVHLQDNYNLGSAFTFQATLLMDGRII
 FGYKEIPVLVTQISSTNHPVKVGLSDAFVVVHRIQQIPNVRRRTIYEYHRVELQMSKITNISAVEMTPL
 PTCLQFNRCGPCVSSQIGFNCSWCSKLRQCSSGFDRHRQDWDVSGPEESKEKMCENTEPVETSSRTTT
 TVGATTTQFRVLTTRRAVTSQFPSTLPTEDDTKIALHLKDNASTDDSAEKKGGTLHAGLIGILIL
 VLIIVATAILVTYMYHHPTSAASIFFIERRPSRWPAMKFRRGSGHPAYAEVPEVGEKEGFIYSEQC
 SGPTRTRPLEMESDESGLPAMEIECRITGTLNGVEFELVGGEGTPEQGRMTNKMSTKGALTFSPYLL
 SHVMGYGFYHFGTYPSTYENPFLHAINNGGYNTRIEKYEDGGVLHVSFSYRYEAGRVIGDFKVMGTGF
 PEDSVIFTDKIIRSNTVEHLHPMGDNDLDGSFTRTFSLRDGGYSSVVDSHMHFKSAIHPSILQNGGP
 MFAFRRVEEDHSNTELGIVEYQHAFKTPDADAGEERV

Restriction Sites: SgfI-RsrII

Cloning Scheme:

Cloning sites used for ORF Shutting:



Plasmid Map:


ACCN:	NM_001282736
ORF Size:	1440 bp
OTI Disclaimer:	The molecular sequence of this clone aligns with the gene accession number as a point of reference only. However, individual transcript sequences of the same gene can differ through naturally occurring variations (e.g. polymorphisms), each with its own valid existence. This clone is substantially in agreement with the reference, but a complete review of all prevailing variants is recommended prior to use. More info
OTI Annotation:	This clone was engineered to express the complete ORF with an expression tag. Expression varies depending on the nature of the gene.
Components:	The ORF clone is ion-exchange column purified and shipped in a 2D barcoded Matrix tube containing 10ug of transfection-ready, dried plasmid DNA (reconstitute with 100 ul of water).
RefSeq:	NM_001282736.2
RefSeq Size:	12135 bp
RefSeq ORF:	1443 bp
Locus ID:	84898
UniProt ID:	Q6UX71
Cytogenetics:	10p12.31
Protein Families:	Druggable Genome, Transmembrane
MW:	54.4 kDa
Gene Summary:	May play a role in tumor angiogenesis.[UniProtKB/Swiss-Prot Function]