

Product datasheet for **RG238472**

C9orf43 (NM_001278630) Human Tagged ORF Clone

Product data:

Product Type:	Expression Plasmids
Product Name:	C9orf43 (NM_001278630) Human Tagged ORF Clone
Tag:	TurboGFP
Symbol:	C9orf43
Mammalian Cell Selection:	Neomycin
Vector:	pCMV6-AC-GFP (PS100010)
E. coli Selection:	Ampicillin (100 ug/mL)
ORF Nucleotide Sequence:	>RG238472 representing NM_001278630. Blue=ORF Red=Cloning site Green=Tag(s)

```
GCTCGTTTAGTGAACCGTCAGAATTTTGTAAACGACTCACTATAGGGCGGCCGGGAATTCGTCGACTG
GATCCGGTACCGAGGAGATCTGCCGCCGCGATCGCC
ATGGAAGCACTAGAATGCTGCAGGGTTGGCCTTTGGCCTAAACCATTTCTAGCTATGGACTTGCCAGAT
GAGAGCCAGTGGGACGAAACCACCTGTGGCTTGGCTGTTGTGCAGCACCCACAATGCTGGGCAACTATC
CGCCGATTGAGAGGGGCCATCCTCGAATCCTCGGCTCATCTGCAAAATCCCTGGATGCTGAAGAT
AACTCCCAGTGCTCACCGTGGTAGACATCTTAGATTCCGGCTTTCAGCTCATCATTTACCAGAATGT
ACCTTTACTAAGGCCATTCTTTATTGTCTCAGAGTTCAAAGTTTACTCCAAATTTCCAGTGTGAAAT
CCGAAGGGTTTACCTGACAAAAGTTTGATCAACTGTACTAACAGACTTCCCAAATTTCCAGTGTGAAAT
TTGAATGAGACGCAACTCCCTGCCCTGAAGATGTTAGAAATATGTTTGTATTGTGGATCCAGAAGAA
ACAGAGATACATGTGAGCCAGCATGGGAAGAAGAAAAGAAAGAACTCGGCAGTGAAGCAAGTCATTT
CTGGGTCTCTCTGGAATCAGTCCGAGGAACACGAGTAGGAACACCAGGGATGATCGTGCTCCCCCA
ACCCAGTGCAATTGTCTGAACAATTCAGTTCAGATTTCTACCTCTCTGGGCTCAATCCGAAGCGTTA
CCTCAGGATCTACTGAAGGAACTTTGGCAGGTGGAAAGCAAACCATGCTCTGTCCAGAGATGAAGATA
AAATTGGCCATGATGAAAAGAATCTCCCTTGGAAAAGAACCGACCTGACAGTGTGATTTCTTCTAAG
ATGTTTCTATCTATACCCGCTCACCTGGAAAGACCAGCACTGCGATATCCTGAACGTTTGAAGAAA
TTACATAACCTGAAGACAGAAGTTACAGGAAACAGCAGCAGCGGAGCAGCAGCAGCAGCAACAG
AAGAAGGTGAAAACACCTATTAAGAAACAGGAGGCTAAAAGAAAGCCAAGAGTGATCCAGGGATCCAG
AGCACTTACATAAACATCCAGTTACCACCGTTTCATGACCGTCTCTATGTTTACAGAACTCTGCCAGGT
CAGAACAGTGACATGAAGCAGCAGCAGCAGATGGAAAAGGAACCACTTCGAAACAGGATTCACCGGAG
AGACCAAGATGAACTACTATGACCATGCGGATTTCCACCACAGTGTAAGAAAGTCTGAATTGTATGAA
ACAGAACCCTAACAAGGACATTAGTGCTCCAGTGGACGCTGTGCCAGAAGCCAGGCTGCCAGGCAA
AAGAAGATCTCCTTTAATTTTTCAGAAATATGGCTAGCACAGGCTGGAACCTCTGAGCTCAAACCTACT
AGGATTTTCAGGACACTGATGATGAGGATGAGGAGGACCACTCTCTGGGGCAGAG
ACGCGTACGCGGCCGCTCGAG - GFP Tag - GTTTAAAC
```



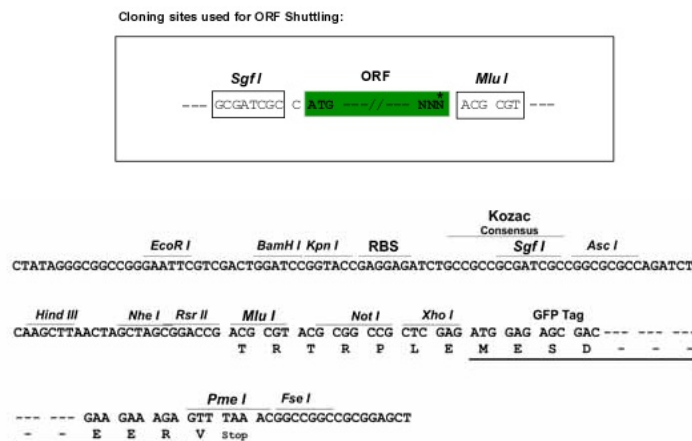
Protein Sequence: >Peptide sequence encoded by RG238472
 Blue=ORF Red=Cloning site Green=Tag(s)

```

MEALECCRVLWPKPFLAMDLPDESQWDETTGLAVCQHPQCWATIRRIERGHPRILGSSCKTPLDAED
KLPVLTVVDILDSGFAAHLPECTFTKAHSLLSQSSKFYSKFHGRPPKGLPDKSLINCTNRLPKFPVLN
LNETQLPCPEDVRNMVVLWIPEETETIHVSQHGKKRKN SAVKSKSFLGLSGNQSAGTRVGTGPMIVPPP
TPVQLSEQFSSDFLPLWAQSEALPQDLLKELLPGGKQTMLCPEMKIKLAMMKNLPLEKNRPDSVISSK
MFLSIHRLTLERPALRYPERLKKLHNLKTEGYRKQQRQQQQQKVKVTPIKKQEAKKAKSDPGIQ
STSHKHPVTTVHDLRYGVRTLPQNSDMKQQQMEKGTTSKQDSTERPKMNYDHADFHHSVKSPELYE
TEPTNKDISAPVDVPEAQAARQKKISFNSEIMASTGWNSELKLLRILQDDEDEEDQSSGAE
TRTRPLEMESDESGLPAMEIECRITGTLNGVEFELVGGEGTPEQGRMTNKMSTKGALTFSPYLLSHV
MGYGFYHFGTYPSTYENPFLHAINNGGYNTRIEKYEDGGVLHVSFSYRYEAGRVIGDFKVMGTGFPED
SVIFTDKIIRSNATVEHLHPMGDNDLDGSFTRTFLRDGGYSSVVDSHMHFKSAIHPSILQNGGPMFA
FRRVEEDHSNTELGIVEYQHAFKTPDADAGEERV
  
```

Restriction Sites: SgfI-MluI

Cloning Scheme:



ACCN: NM_001278630

ORF Size: 1437 bp

OTI Disclaimer: The molecular sequence of this clone aligns with the gene accession number as a point of reference only. However, individual transcript sequences of the same gene can differ through naturally occurring variations (e.g. polymorphisms), each with its own valid existence. This clone is substantially in agreement with the reference, but a complete review of all prevailing variants is recommended prior to use. [More info](#)

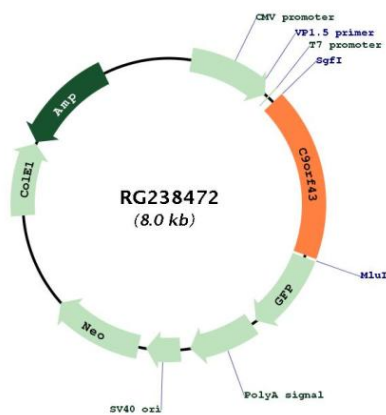
OTI Annotation: This clone was engineered to express the complete ORF with an expression tag. Expression varies depending on the nature of the gene.

Components: The ORF clone is ion-exchange column purified and shipped in a 2D barcoded Matrix tube containing 10ug of transfection-ready, dried plasmid DNA (reconstitute with 100 ul of water).

RefSeq: [NM_001278630.2](#)

RefSeq Size: 1948 bp
 RefSeq ORF: 1440 bp
 Locus ID: 257169
 Cytogenetics: 9q32
 MW: 54.7 kDa

Product images:



Circular map for RG238472