

Product datasheet for **RG238461**

PCYOX1L (NM_001301055) Human Tagged ORF Clone

Product data:

Product Type:	Expression Plasmids
Product Name:	PCYOX1L (NM_001301055) Human Tagged ORF Clone
Tag:	TurboGFP
Symbol:	PCYOX1L
Mammalian Cell Selection:	Neomycin
Vector:	pCMV6-AC-GFP (PS100010)
E. coli Selection:	Ampicillin (100 ug/mL)
ORF Nucleotide Sequence:	>RG238461 representing NM_001301055. Blue=ORF Red=Cloning site Green=Tag(s)

```
GCTCGTTTAGTGAACCGTCAGAATTTTGTAAACGACTCACTATAGGGCGGCCGGGAATTCGTCGACTG
GATCCGGTACCGAGGAGATCTGCCGCCGCGATCGCC
ATGCCCGCCGGGCAAAATCGGTGCGGGGAAGGACGCGCGGTGGTTGGGGCTGGGATTGGGGCTCTGCT
GTGGCCATTTTCTCCAGCAGCACTTTGGACCTCGGGTGCAGATCGACGTGTACGAGAAGGGAACCGTG
GGTGGCCGCTTGGCCACCATCTCAGTCAACAAGCAGCACTATGAGAGCGGGGCTGCCTCCTTCCACTCC
CTGAGCCTGCACATGCAGGACTTCGTCAAGCTGCTGGGCTGAGGCACCGCGCGAGGTGGTGGGCAGG
AGCGCCATCTTCGGCGGGGAGCACTTCATGCTGGAGGAGACTGACTGGTACCTGCTGAACCTTTCCGC
CTCTGGTGGCACTATGGCATCAGCTTCTTGAGGCTGCAGATGTGGGTGGAGGAGTTCATGGAGAAGTTC
ATGAGGATCTATAAGTACCAGGCCACGGCTATGCCTTCTCGGGTGTGGAGGAGCTGCTCTACTCACTG
GGGAGTCCACCTTTGTTAACATGACCCAGCACTCTGTGGCTGAGTCCCTGCTGCAGGTGGGCGTCACG
CAGCGCTTATTGATGATGTCGTTTCTGCTGTCCTGCGGGCCAGCTATGGCCAGTCAGCAGCGATGCC
GCCTTTGAGGAGCCATGTCACTAGCCGGGCCCCAAGGCAGCCTGTGGTCTGTGGAAGGAGGCAATAAG
CTGTTTGTTCGGTTTCTGAAGCTCACCAAGGCCAATGTGATCCATGCCACAGTGACCTCTGTGACC
CTGCACAGCACAGAGGGAAAGCCCTGTACCAGGTGGCGTATGAGAATGAGGTAGGCAACAGCTCTGAC
TTCTATGACATCGTGGTTCATCGCCACCCCTGCACCTGGACAACAGCAGCAGCAACTTAACCTTTGCA
GGCTTCCACCCGCCATTGATGACGTGCAGGGCTTTTCCAGCCACCGTCTCTCTTGGTCCACGGC
TACCTCAACTCGTCTACTTCGGTTTCCAGACCCCTAAGCTTTTCCCTTTGCCAACATCCTTACCACA
GATTTCCCGAGCTTCTTCTGCACTCTGGACAACATCTGCCCTGTCAACATCTCTGCCAGTTCGGCGGA
AAGCAGCCCAGGAGGAGCTGTTTGGCGAGTCCAGTCCCCCAAGCCCTCTTTCGGACCCAGCTAAAG
ACCCTGTTCCGTTCTATTACTCAGTGCAGACAGCTGAGTGGCAGGCCATCCCCCTATGGCTCCCGC
CCCAGCTCCCGAGGTTTGCACCTCATGACCAGCTTTTACCTCAATGCCCTGGAGTGGGCGGCCAGC
TCCGTGGAGGTGATGGCCGTGGCTGCCAAGAATGTGGCCTTGCTGGCTTACAACCCTGGTACCAGGAC
CTAGACAAGATTGATCAAAAAGATTTGATGCACAAGGTCAAGACTGAACTG
ACGCGTACGCGGCCGCTCGAG - GFP Tag - GTTTAAAC
```



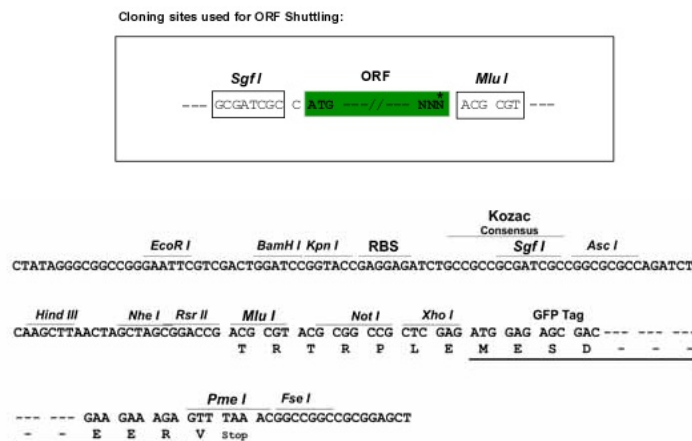
[View online »](#)

Protein Sequence: >Peptide sequence encoded by RG238461
 Blue=ORF Red=Cloning site Green=Tag(s)

MPRRAKSVREGRAVVGAGIGGSAVAHFLQQHFQPRVQIDVYEKGTVGGRLATISVKNQHYESGAASFHS
 LSLHMQDFVKLLGLRHRREVVGRSAIFGGEHFMLEETDWWLLNLFRLWWHYGISFLRLQMWVEEVMKFF
 MRIYKYQAHGYAFSGVEELLYSLGESTFVNMTQHSVAESLLQVGVTRQFIDVVSAVLRASYGQSAAMP
 AFAGAMSLAGAQGSLWSVEGGNKLVCSSLKLTKANVIHATVTSVTLHSTEGKALYQVAYENEVGNSSD
 FYDIVVIATPLHLDNSSNLTFAGFHPPIDDVQGSFQPTVVSLVHGYNSSYFGFPDKLFPFANILTT
 DFPSFFCTLDNICPVNISASFRKQPQEAAVWRVQSPKPLFRTQLKTLFRSYSSVQTAEWQAHPLYGRS
 PTLPRFALHDQLFYLNALEWAASSVEVMAVAANKVALLAYNRWYQDLDKIDQKDLMHKVKTEL
TRTRPLEMESDESGLPAMEIECRITGTLNGVEFELVGGEGTPEQGRMTNKMSTKGALTFSPYLLSHV
 MGYGFYHFGTYPSTYENPFLHAINNGGYNTRIEKYEDGGVLHVSFSYRYEAGRVIGDFKVMGTGFPED
 SVIFTDKIIRSNATVEHLHPMGDNDLDGSFTRTFSLRDGGYSSVVDSHMHFKSAIHPSILQNGGPMFA
 FRRVEEDHSNTELGIVEYQHAFKTPDADAGEERV

Restriction Sites: SgfI-MluI

Cloning Scheme:



ACCN: NM_001301055

ORF Size: 1431 bp

OTI Disclaimer: The molecular sequence of this clone aligns with the gene accession number as a point of reference only. However, individual transcript sequences of the same gene can differ through naturally occurring variations (e.g. polymorphisms), each with its own valid existence. This clone is substantially in agreement with the reference, but a complete review of all prevailing variants is recommended prior to use. [More info](#)

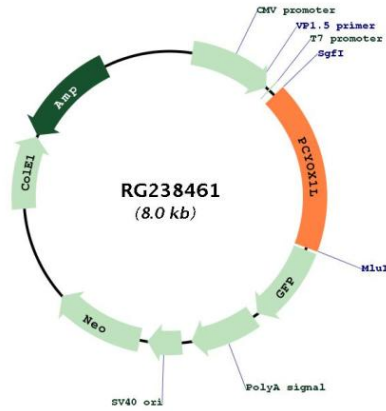
OTI Annotation: This clone was engineered to express the complete ORF with an expression tag. Expression varies depending on the nature of the gene.

Components: The ORF clone is ion-exchange column purified and shipped in a 2D barcoded Matrix tube containing 10ug of transfection-ready, dried plasmid DNA (reconstitute with 100 ul of water).

RefSeq: [NM_001301055.1](#), [NP_001287984.1](#)

RefSeq Size: 2583 bp
 RefSeq ORF: 1434 bp
 Locus ID: 78991
 Cytogenetics: 5q32
 MW: 53.9 kDa
 Gene Summary: Probable oxidoreductase.[UniProtKB/Swiss-Prot Function]

Product images:



Circular map for RG238461