

Product datasheet for **RG238447**

FDFT1 (NM_001287750) Human Tagged ORF Clone

Product data:

| | |
|---------------------------|--|
| Product Type: | Expression Plasmids |
| Product Name: | FDFT1 (NM_001287750) Human Tagged ORF Clone |
| Tag: | TurboGFP |
| Symbol: | FDFT1 |
| Synonyms: | DGPT; ERG9; SQS; SQSD; SS |
| Mammalian Cell Selection: | Neomycin |
| Vector: | pCMV6-AC-GFP (PS100010) |
| E. coli Selection: | Ampicillin (100 ug/mL) |
| ORF Nucleotide Sequence: | >RG238447 representing NM_001287750. Blue=ORF Red=Cloning site Green=Tag(s) |

```
GCTCGTTT TAGTGAACCGTCAGAATTTTGT AATACGACTCACTATAGGGCGGCCGGGAATTCGTCGACTG
GATCCGGTACCGAGGAGATCTGCCGCC GCGATCGCC
ATGGCCGCAGCCGCTGCGGCACCAAGGCCATGGCCCTCTCAAGCGCACCTTGGTCTGAGTCCCGCC
GCGGCGCCAGGGGCCGGGCGCAGGCACCGCCCCGCGGGGCTGCTGCTTGCCTCCTGCCGCTGGCCC
TGCAAGGACTGGCCTCGGGGAGAGGGCGGCAGGCTGTGGAGCCGCTGCCCCAGTCCCCTCCACTCC
CACTCCCCTCCACTCCCCTCCTGCTCCTCGACGTCTCCACC GCGTGTGTGTCTGCCCGCAG
GACTCGCTCAGCAGCAGCTGAAACTTGCTACAAGTATCTCAATCAGACCAGTCGCAGTTTCGCAGCT
GTTATCCAGGCGTGGATGGGAAATGCGCAACGCAGTGTGCATATTTTCTGGTTCTCCGAGCTCTG
GACACACTGGAAGATGACATGACCATCAGTGTGAAAAGAAGTCCCGCTGTACACAACCTTCACTCT
TTCTTTACCAACCAGACTGGCGGTT CATGGAGAGCAAGGAGAAGGATCGCCAGGTGCTGGAGGACTTC
CCAACGATCTCCCTTGAGTTTAGAAATCTGGCTGAGAAATACAAACAGTGATTGCCGACATTTGCCGG
AGAATGGGCATTGGGATGGCAGAGTTTTTGATAAGCATGTGACCTCTGAACAGGAGTGGGACAAGTAC
TGCCACTATGTTGCTGGGCTGGTCGGAATTGGCCTTTCCCGTCTTTCTCAGCCTCAGAGTTTGAAGAC
CCCTTAGTTGGTGAAGATACAGAACGTGCCAATCTATGGGCTGTTTCTGCAGAAAACAAACATCATC
CGTGACTATCTGGAAGACCAGCAAGGAGGAGAGAGTTCTGGCCTCAAGAGGTTTGGAGCAGGTATGTT
AAGAAGTTAGGGATTTTGCTAAGCCGGAGAATATTGACTTGGCCGTGCAGTGCCTGAATGAATATA
ACCAATGCACTGCACCACATCCCAGATGTCATCACCTACCTTTGAGACTCAGAAAACAGAGTGTGTTT
AACTTCTGTGCTATTCCACAGGTGATGGCCATTGCCACTTTGGCTGCCTGTTATAATAACCAGCAGGTG
TTCAAAGGGCAGTGAAGATTCGAAAAGGGCAAGCAGTGACCCTGATGATGGATGCCACCAATATGCCA
GCTGTCAAAGCCATCATATATCAGTATATGGAAGAGATTTATCATAGAATCCCCGACTCAGACCCATCT
TCTAGCAAACAAGGCAGATCATCTCCACCATCCGACGCAGAATCTTCCCAACTGTCAGCTGATTTCC
CGAAGCCACTACTCCCCATCTACCTGTCGTTTGTGTCATGCTTTTGGCTGCCCTGAGCTGGCAGTACCTG
ACCACTCTCTCCAGGTAACAGAAGACTATGTTTCCAGACTGGAGAACAC
ACGCGTACGCGGCCGCTCGAG - GFP Tag - GTTTAAAC
```



[View online »](#)

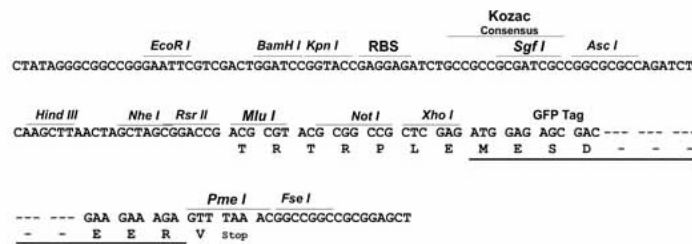
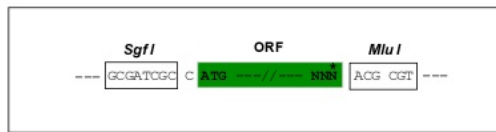
Protein Sequence: >Peptide sequence encoded by RG238447
 Blue=ORF Red=Cloning site Green=Tag(s)

MAAAACGKAMALFKRTLVLSPAAAPRPGGAGTAPRGCCLPPAAWPCKDWPRGEGGRLWSRLPQSHSHS
 HSHSHSHSCSSTPTAVCVVCPQDSLSSSLKTCYKYLNQTSRSFAAVIQALDGEMRNAVCFYLVLRAL
 DTLEDDMTISVEKKVPLLNHFHFLYQPDWRFMESKEKDRQVLEDFPTISLEFRNLAEKYQTVIADICR
 RMGIGMAEFLDKHVTSEQEWDKYCHYVAGLVGIGLSRLFSASEFEDPLVGEDTERANSMGLFLQKTNI
 RDYLEDQGGREFWPQEVWSRYVKKLGDFAKPENIDLAVQCLNELITNALHHIPDVITYLSRLRNQSVF
 NFCAIPQVMAIATLAACYNNQVFKGAVKIRKQAVTLMMDATNMPAVKAIYQYMEEIYHRIPDSDPS
 SSKTRQIISTIRTQNLPCQLISRSHYSPIYLSFVMLLAALSWQYLTTLSQVTEYVYQVTEGEH
TRTRPLEMESDESGLPAMEIECRITGTLNGVEFELVGGEGTPEQGRMTNKMSTKGALTFSPYLLSHV
 MGYGFYHFGTYPSGYENPFLHAINNGGYNTRIEKYEDGGVLHVSFSYRYEAGRVIGDFKVMGTGFPED
 SVIFTDKIIRSNATVEHLHPMGDNDLDGSFTRTFLRDGGYSSVVDSHMHFKSAIHPSILQNGGPMFA
 FRRVEEDHSNTELGIVEYQHAFKTPDADAGEERV

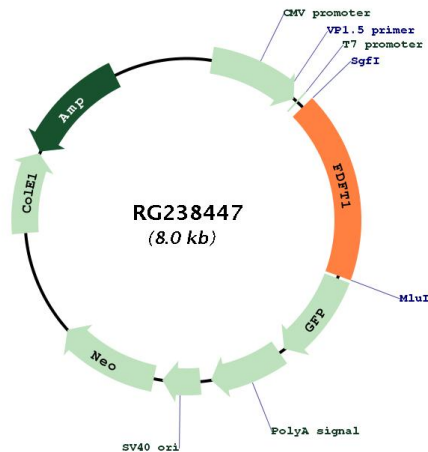
Restriction Sites: SgfI-MluI

Cloning Scheme:

Cloning sites used for ORF Shutting:



Plasmid Map:



ACCN: NM_001287750

ORF Size: 1428 bp

OTI Disclaimer: The molecular sequence of this clone aligns with the gene accession number as a point of reference only. However, individual transcript sequences of the same gene can differ through naturally occurring variations (e.g. polymorphisms), each with its own valid existence. This clone is substantially in agreement with the reference, but a complete review of all prevailing variants is recommended prior to use. [More info](#)

OTI Annotation: This clone was engineered to express the complete ORF with an expression tag. Expression varies depending on the nature of the gene.

Components: The ORF clone is ion-exchange column purified and shipped in a 2D barcoded Matrix tube containing 10ug of transfection-ready, dried plasmid DNA (reconstitute with 100 ul of water).

RefSeq: [NM_001287750.1](#), [NP_001274679.1](#)

RefSeq Size: 2248 bp

RefSeq ORF: 1431 bp

Locus ID: 2222

UniProt ID: [P37268](#)

Cytogenetics: 8p23.1

Protein Families: Druggable Genome

Protein Pathways: Metabolic pathways, Steroid biosynthesis

MW: 54.1 kDa

Gene Summary:

This gene encodes a membrane-associated enzyme located at a branch point in the mevalonate pathway. The encoded protein is the first specific enzyme in cholesterol biosynthesis, catalyzing the dimerization of two molecules of farnesyl diphosphate in a two-step reaction to form squalene. [provided by RefSeq, Jul 2008]