

## Product datasheet for **RG238439**

### **BSDC1 (NM\_001300958) Human Tagged ORF Clone**

#### Product data:

Product Type:	Expression Plasmids
Product Name:	BSDC1 (NM_001300958) Human Tagged ORF Clone
Tag:	TurboGFP
Symbol:	BSDC1
Mammalian Cell Selection:	Neomycin
Vector:	pCMV6-AC-GFP (PS100010)
E. coli Selection:	Ampicillin (100 ug/mL)
ORF Nucleotide Sequence:	>RG238439 representing NM_001300958. Blue=ORF Red=Cloning site Green=Tag(s)

```
GCTCGTTTAGTGAACCGTCAGAATTTTGTAAACGACTCACTATAGGGCGGCCGGGAATTCGTCGACTG
GATCCGGTACCGAGGAGATCTGCCGCCGCGATCGCC
ATGGCGGAAGGGGAGGACGTGGGATGGTGGCGGAGCTGGCTGCAGCAGAGCTACCAAGCAGTCAAAGAG
AAGTCCTCTGAAGCCTTGGAGTTTATGAAGCGGGACCTGACGGAGTTTACCCAGGTGGTGCAGCATGAC
ACGGCCTGTACCATCGCAGCCACGGCCAGCGTGGTCAAGGAGAAGCTGGCTATTGCAGCCTGTTCCCGG
GGCGCTTGCTTCTCTGCCCGTTCTCTATACAGACGGAAGGCTCCTCAGGAGCAACAGAGAAGATGAAG
AAAGGGTTATCTGACTTCTAGGGGTGATCTCAGACACCTTTGCCCTTCGCCAGACAAAACCATCGAC
TGCGATGTCATCACCTGATGGGCACACCGTCTGGCACAGCTGAGCCCTATGATGGCACCAAGGCTCGC
CTCTATAGCCTGCAGTCGGACCCAGCAACCTACTGTAATGAACCAGATGGGCCCCCGGAATTGTTTGAC
GCCTGGCTTTCCAGTTCTGCTTGGAGGAGAAGAAGGGGAGATCTCAGAGCTCCTTGATAGCAGCCCC
TCCATCCGGGCCCTACACCAAGATGGTTCAGCAGCTGTTTCCATTGAGAAATTCGGCATCGGTAT
TTCTATAAAGTCCATCAGTTAGAGCAGGAGCAGGCCCGGAGGGACGCCCTGAAGCAGCGGGCGGAACAG
AGCATCTCTGAAGAGCCCGGCTGGGAGGAGGAGGAAGAGGAGCTCATGGCATTTCACCCATATCTCCA
AAAGAGGCAAAGTTCTGTGGCCAAAATTTCTACATTCCTGAAGGAGAACCTGGCCCCAGAGCCCC
TGTGAAGAGAATCTGGTACTTCAGTTGAGCCCCAGCAGAGGTGACTCCATCAGAGAGCAGTGAGAGC
ATCTCCCTCGTGACACAGATCGCAACCCGGCCACTGCACCTGAGGCACGAGTGCTACCCAAGGACCTG
TCCAAAAGCTGCTAGAGGCATCCTTGGAGGAACAGGGCCTGGCTGTGGATGTGGGTGAGACTGGACCC
TACCCCTATTCACTCCAAGCCCTAACGCCTGCTGGCCACACCGCGGCCAGAGCCCAGGCCTCCA
GCCAGAGTAGAGACTCTGAGGGAGGAGCGCCACAGACTTACGGGTGTTTGAGCTGAACTCGGATAGT
GGGAAGTCTACACCCTCCAACAATGAAAGAAAGGCTCAAGCAGCGGACATCAGTGAGGACTGGGAGAAA
GACTTTGACTTGGACATGACTGAAGAGGAGGTGCAGATGGCACTTTCAAAAGTGGATGCCTCCGGGGAG
GTGAGTGGCCTGGTGGGTCAGAGGGAAGCGAGCCTAATGGTCTGGGTGTGAGAGCTCTCCCCAGCCA
GCCAGCTGTCCCCTCAGGAGGGTCCCTGCTCCTGTCTGAGG
ACGCGTACGCGGCCGCTCGAG - GFP Tag - GTTTAAAC
```



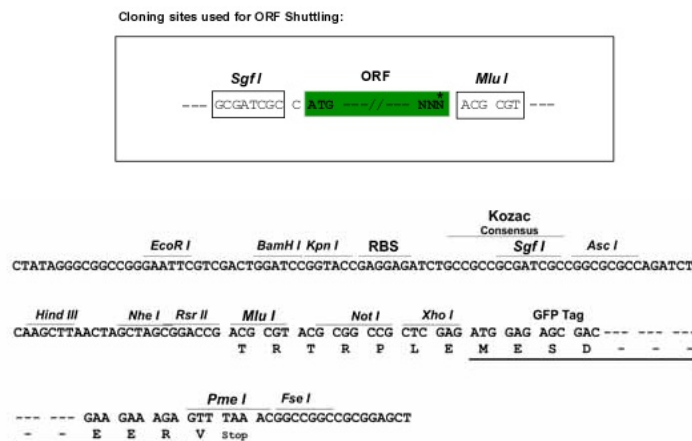
[View online »](#)

**Protein Sequence:** >Peptide sequence encoded by RG238439  
 Blue=ORF Red=Cloning site Green=Tag(s)

MAEGEDVGWRSWLQSYQAVKEKSSEALEFMKRDLTEFTQVVQHDTACTIAATASVVKEKLAIAACSR  
 GACFLCPFISIQTGSSGATEKMKKGLSDFLGVISDTFAPSPDKTIDCDVITLMTGTPSGTAEPYDGTKAR  
 LYSLQSDPATYCNEPDGPPPELFDRAWLSQFLEEKKGEISELLVGSPSIRALYTKMVAVSHSEFWHRY  
 FYKVHQLQEQARRDALKQRAEQSISEEPGWEEEEELMGI SPI SPKEAKVPVAKISTFPEGEPGPQSP  
 CEENLVTSVEPPAEVTPSESSISLVTQIANPATAPEARVLPKDLSQLLEASLEEQLAVDVGETGP  
 SPPHISKPLTPAGHTGGPEPRPPARVETLREEAPTDLRVFELNSDSGKSTPSNNGKKSSTDISEDWEK  
 DFDLDMTEEEVQMALSKVDASGEVSGPGGSEGSEPNPGCESSPQAQLSPQEGPCSCLR  
**TRTRPLEMESDESGLPAMEIECRITGTLNGVEFELVGGEGTPEQGRMTNKMSTKGALTFSPYLLSHV**  
 MGYGFYHFGTYPSTYENPFLHAINNGGYNTRIEKYEDGGVLHVSFSYRYEAGRVIGDFKVMGTGFPED  
 SVIFTDKIIRSNATVEHLHPMGDNDLDGSFTRTFLRDGGYSSVVDSHMHFKSAIHPSILQNGGPMFA  
 FRRVEEDHSNTELGIVEYQHAFKTPDADAGEERV

**Restriction Sites:** SgfI-MluI

**Cloning Scheme:**



**ACCN:** NM\_001300958

**ORF Size:** 1422 bp

**OTI Disclaimer:** The molecular sequence of this clone aligns with the gene accession number as a point of reference only. However, individual transcript sequences of the same gene can differ through naturally occurring variations (e.g. polymorphisms), each with its own valid existence. This clone is substantially in agreement with the reference, but a complete review of all prevailing variants is recommended prior to use. [More info](#)

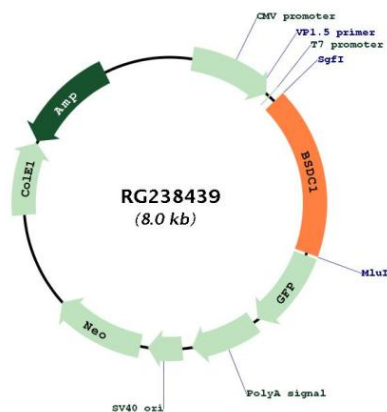
**OTI Annotation:** This clone was engineered to express the complete ORF with an expression tag. Expression varies depending on the nature of the gene.

**Components:** The ORF clone is ion-exchange column purified and shipped in a 2D barcoded Matrix tube containing 10ug of transfection-ready, dried plasmid DNA (reconstitute with 100 ul of water).

**RefSeq:** [NM\\_001300958.2](#)

RefSeq Size: 5172 bp  
 RefSeq ORF: 1425 bp  
 Locus ID: 55108  
 UniProt ID: [Q9NW68](#)  
 Cytogenetics: 1p35.1  
 MW: 51.6 kDa

**Product images:**



Circular map for RG238439