

Product datasheet for **RG238432**

ERF (NM_001301035) Human Tagged ORF Clone

Product data:

Product Type: Expression Plasmids
Product Name: ERF (NM_001301035) Human Tagged ORF Clone
Tag: TurboGFP
Symbol: ERF
Synonyms: CHYTS; CRS4; PE-2; PE2
Mammalian Cell Selection: Neomycin
Vector: pCMV6-AC-GFP (PS100010)
E. coli Selection: Ampicillin (100 ug/mL)
ORF Nucleotide Sequence: >RG238432 representing NM_001301035.
Blue=ORF Red=Cloning site Green=Tag(s)

```
GCTCGTTTAGTGAACCGTCAGAATTTGTAAACGACTCACTATAGGGCGCCGGGAATTCGTCGACTG
GATCCGGTACCGAGGAGATCTGCCGCCGCGATCGCC
ATGAATTACGACAAGCTGAGCCGGGCCCTGCGCTATTACTATAACAAGCGCATTCTGCACAAGACCAAG
GGGAAACGGTTCACCTACAAGTTCAATTTCAACAAACTGGTGCTGGTCAATTACCCATTCATTGATGTG
GGGTTGGCTGGGGTGCAGTGCCCCAGAGTGCCCCGCCAGTGCCGTGGGTGGTAGCCACTTCGGCTTC
CCTCCCTCAACGCCCTCCGAGGTGCTGTCCCCACCGAGGACCCCGCTACCACCAGCCTGCTCTTCA
TCTTCATCTTCCCTCTTCTCGGCTGTGGTGGCCCGCCGCTGGGCGGAGGCTCAGTCAGTACTGTAGT
GATGGCACGTGAGAGCTGGAGGAACCGCTGGGAGAGGATCCCCGCGCCGACCACCCGGCCCTCCGGAT
CTGGGTGCCTTCCGAGGGCCCCGCTGGCCCGCTGCCCATGACCCTGGTGTCTTCCGAGTCTATCCC
CGGCCCTGGGGTGGCCCTGAACCCCTCAGCCCTTCCCTGTGTCGCTCTGGCCGGTCTGGATCCCTG
CTGCCCTCAGCTCTCCCCGGCTTGCCCATGACGCCACCCACCTGGCCTACACTCCCTCGCCACG
CTGAGCCCGATGTACCCAGTGGTGGCGGGGGCCAGCGGCTCAGGGGGAGGCTCCCACTTCTCCTTC
AGCCCTGAGGACATGAAACGGTACCTGCAGGCCACACCCAAAGCGTCTACAACCTACCACCTCAGCCCC
CGCGCTTCTGCACTACCCTGGGCTGGTGGTGGCCAGCCAGCCAGCGCCCTGACAAGTGGCCGCTGCCG
CCCATGGCACCCGAGACCCACCCGCTCCCTCCTCGCCCTCGTCATCCTCTTCTTCTTCTTCTCCTCCCA
TTCAAGTTTAAGCTCCAGCCGCCCACTCGGACGCCGGCAGCGGGCAGCTGGGGAGAAGGCCGTAGCC
GGTGTGACAAGAGCGGTGGCAGTGCAGGCGGGCTGGCTGAGGGGCAGGGGCGCTAGCCCCACCGCCC
CCGCCACCACAGATCAAGGTGGAGCCATCTCGGAAGGCGAGTCGGAGGAGGTAGAGGTGACTGACATC
AGTGATGAGGATGAGGAAGACGGGAGGTGTTCAAGACGCCCCGTGCCACCTGCACCCCTAAGCCT
GAGCCCGGCGAGGCACCCGGGCATCCCAGTGCATGCCCTCAAGCTACGCTTTAAGCGGCGCTGGAGT
GAAGACTGTGCTCGCTCGAAGGGGTGGGGCCCCGCTGGGGCTTTGAGGATGAGGGTGGAGACAAGAAG
GTGCGTGGGAGGGGCTGGGAGGCTGGGGGCCCTCACCCCAAGCGGGTGAGCTCTGACCTCCAG
CATGCCACGGCCAGCTCTCCCTGGAGCACCGAGACTCC
ACGCGTACGCGGCCGCTCGAG - GFP Tag - GTTTAAAC
```



[View online »](#)

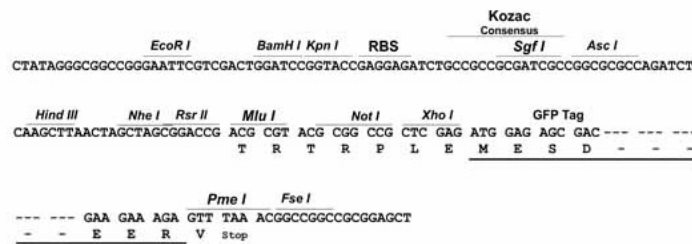
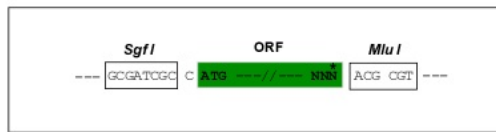
Protein Sequence: >Peptide sequence encoded by RG238432
 Blue=ORF Red=Cloning site Green=Tag(s)

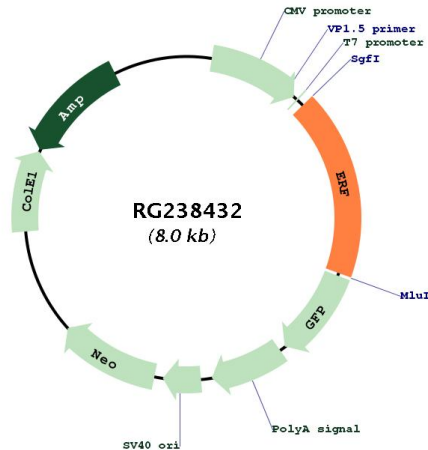
MNYDKLSRALRYYYNKRILHKTKGKRFTYKFNFNKLVLVNYPFIDVGLAGGAVPQSAPPVPSGGSHFRF
 PPSTPSEVLSPTEDPRSPACSSSSSLFSAVVARRLRGGSVSDCSDGTSELEPLGEDPRARPPGPPD
 LGAFRGPPLARLPHDPGVFRVYPRRGGPELSPFPVSPLAGPGLLPQLSPALPMTPTHLAYTPSPT
 LSPMYPSGGGPGSGGGSHFSFSPEDMKRYLQAHTQSVVNYHLSPRAFHLHYPLVVPQQRPKCLP
 PMAPETPPVPSSASSSSSSSPFKFLQPPPLGRRQRAAGEKAVAGADKSGGSAGGLAEGAGALAPP
 PPPQIKVEPISEGESEEVETDIDSEDEEDGEVFKTPRAPPAPPKPEPGEAPGASQCMLPLRFRKRRWS
 EDCRLEGGGGPAGGFEDEGEDKKVRGEGPGEAGGPLTPRRVSSDLQHATAQLSLEHRDS
TRTRPLEMESDESGLPAMEIECRITGTLNGVEFELVGGGEGTPEQGRMTNKMSTKGALTFSPYLLSHV
 MGYGFYHFGTYPSTYENPFLHAINNGGYNTRIEKYEDGGVLHVSFSYRYEAGRVIGDFKVMGTGFPED
 SVIFTDKIIRSNATVEHLHPMGDNDLDGSFTRTFLSLRDGGYSSVVDSHMHFKSAIHPSILQNGGPMFA
 FRRVEEDHSNTELGIVEYQHAFKTPDADAGEERV

Restriction Sites: SgfI-MluI

Cloning Scheme:

Cloning sites used for ORF Shutting:



Plasmid Map:


ACCN:	NM_001301035
ORF Size:	1419 bp
OTI Disclaimer:	The molecular sequence of this clone aligns with the gene accession number as a point of reference only. However, individual transcript sequences of the same gene can differ through naturally occurring variations (e.g. polymorphisms), each with its own valid existence. This clone is substantially in agreement with the reference, but a complete review of all prevailing variants is recommended prior to use. More info
OTI Annotation:	This clone was engineered to express the complete ORF with an expression tag. Expression varies depending on the nature of the gene.
Components:	The ORF clone is ion-exchange column purified and shipped in a 2D barcoded Matrix tube containing 10ug of transfection-ready, dried plasmid DNA (reconstitute with 100 ul of water).
RefSeq:	NM_001301035.1 , NP_001287964.1
RefSeq Size:	2634 bp
RefSeq ORF:	1422 bp
Locus ID:	2077
UniProt ID:	P50548
Cytogenetics:	19q13.2
Protein Families:	Transcription Factors
MW:	50.4 kDa
Gene Summary:	ETS2 is a transcription factor and protooncogene involved in development, apoptosis, and the regulation of telomerase. The protein encoded by this gene binds to the ETS2 promoter and is a strong repressor of ETS2 transcription. Several transcript variants encoding two different isoforms have been found for this gene. [provided by RefSeq, Aug 2015]