

Product datasheet for **RG238431**

CDC25C (NM_001287582) Human Tagged ORF Clone

Product data:

Product Type:	Expression Plasmids
Product Name:	CDC25C (NM_001287582) Human Tagged ORF Clone
Tag:	TurboGFP
Symbol:	CDC25C
Synonyms:	CDC25; PPP1R60
Mammalian Cell Selection:	Neomycin
Vector:	pCMV6-AC-GFP (PS100010)
E. coli Selection:	Ampicillin (100 ug/mL)
ORF Nucleotide Sequence:	>RG238431 representing NM_001287582. Blue=ORF Red=Cloning site Green=Tag(s)

```
GCTCGTTTAGTGAACCGTCAGAATTTGTAAACGACTACTATAGGGCGCCGGGAATTCGTCGACTG
GATCCGGTACCGAGGAGATCTGCCGCCGCGATCGCC
ATGTCTACGGAACCTTCTCATCCACAAGAGAGGAAGGAGCTCTGGCTCAGGACCCAGTTTTAGGTCT
AATCAAAGGAAAAATGTTAAACCTGCTCCTGGAGAGAGACACTTCCCTTACCGTCTGTCCAGATGTCCT
AGAAGTCCAGTGGGCAAATTTCTGGTATTCTGCAAACCTAAGCATTGTCTGGAGGAACCCAAAA
TGTTCCTCGATCTTTCGAATCTTAGCAGTGGGAGATAACTGCCACTCAGTTACCCTTCTGCAGAC
CTTGATGAACTGGTACCTGGATTCTCAGGACTTCAGGAAGTGCATTTAGCTGGGATGAATCATGAC
CAGCACCTAATGAAATGTAGCCAGCACAGCTTTTGTAGCACTCCGAATGGTTTGGACCGTGGCCAT
AGAAAGAGAGATGCAATGTGTAGTTCATCTGCAAATAAAGAAAAATGACAATGGAACTTGGTGGACAGT
GAAATGAAATATTTGGGAGTCCCACTACTACTGTTCCAAAAATTGGATAAAAAATCCAAACCTAGGAGAA
GACCAGGCAGAAGAGATTTAGATGAATTAATGGAGTTTTCCCTGAAAGATCAAGAAGCAAAGGTGAGC
AGAAGTGGCCTATATCGCTCCCCGTCGATGCCAGAGAAGTGAACAGGCCAAGACTGAAGCAGGTGGAA
AAATTCAGGACAACACAATACCAGATAAAGTTAAAAAAAAGTATTTTTCTGGCCAAGGAAAGCTCAGG
AAGGGCTTATGTTTAAAGAAGACAGTCTCTCTGTGTGACATTACTATCACTCAGATGCTGGAGGAAGAT
TCTAACCGGGCACCTGATTGGTGATTTTTCCAAGGTATGTGCGCTGCCAACCGTGTGAGGAAACAC
CAAGATCTGAAGTATGTCAACCCAGAAACAGTGGCTGCCTACTGTCGGGGAAGTCCAGGGTCTGATT
GAGAAGTTTTATGTCATTGATTGTCGCTATCCATATGAGTATCTGGGAGGACACATCCAGGGAGCCTTA
AACTTATATAGTCAGGAAGAAGTGTAACTTCTTTCTGAAGAAGCCATCGTCCCTTTGGACACCCAG
AAGAGAATAATCATCGTGTCCACTGTGAATTCTCCTCAGAGAGGGGCCCCGAATGTGCCGCTGTCTG
CGTGAAGAGGACAGGTCTCTGAACAGTATCCTGCATTGTACTACCCAGAGCTATATATCCTTAAAGGC
GGCTACAGAGACTTCTTCCAGAATATATGGAAGTGTGTGAACCCAGAGCTACTGCCCTATGCATCAT
CAGGACCACAAGACTGAGTTGCTGAGGTGTCGAAGCCAGAGCAAAGTGCAGGAAGGGGAGCGGCAGCTG
CGGGAGCAGATTGCCCTTCTGGTGAAGGACATGAGCCCA
ACGCGTACGCGGCCGCTCGAG - GFP Tag - GTTTAAAC
```



View online »

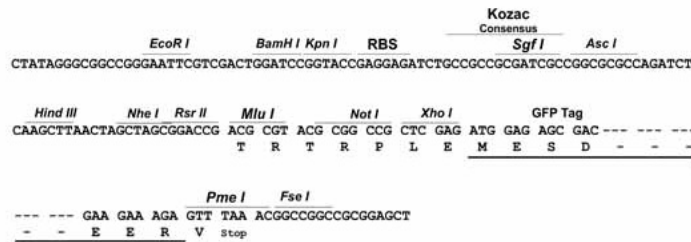
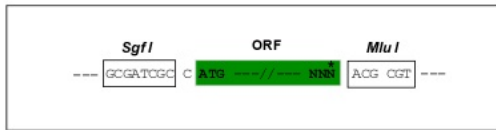
Protein Sequence: >Peptide sequence encoded by RG238431
 Blue=ORF Red=Cloning site Green=Tag(s)

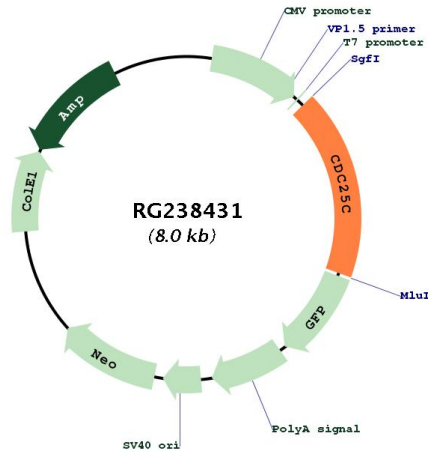
MSTELFSSTREEGSSGSGPSFRSNQRKMLNLLLERDTSFTVCPDVPRTVPVKFLGDSANLSILSGGTPK
 CCLDLNLSSGEITATQLTTSADLDETHLDSSGLQEVHLAGMNHQHLMKCSPAQLLCSTPNGLDRGH
 RKRDMCASSANKENDNGNLVDSEMKYLGSPITTVPKLDKNPNLGEDQAEIISDELMEFSLKDQEAQVS
 RSGLYRSPSPENLNRPRKQVEKFKDNTIPDKVKKKYFSGQGKLRKGLCLKKTVSLCDITITQMLEED
 SNQGHLLIGDFSKVICALPTVSGKHQDLKYNPETVAALLSGKFQGLIEKFYVIDCRYPYEYLGHHIQGAL
 NLYSQEELFNFFLKKPIVPLDTQKRIIVFHCFSSERGRMCRCLREEDRSLNQYPALYPPELYILKG
 GYRDFPFPEYMELCEPQSYCPMHQDHTELLRCRSQSKVQEGERLREQIALLVKDMSP
TRTRPLEMESDESGLPAMEIECRITGTLNGVEFELVGGEGTPEQGRMTNKMSTKGALTFSPYLLSHV
 MGYGFYHFGTYPGYPENPFLHAINNGGYNTRIEKYEDGGVLHVSFSYRYEAGRVIGDFKVMGTGFPED
 SVIFTDKIIRSNATVEHLHPMGDNDLDGSFTRTFLRDGGYSSVVDSHMHFKSAIHPSILQNGGPMFA
 FRRVEEDHSNTELGIVEYQHAFKTPDADAGEERV

Restriction Sites: SgfI-MluI

Cloning Scheme:

Cloning sites used for ORF Shutting:



Plasmid Map:


ACCN:	NM_001287582
ORF Size:	1419 bp
OTI Disclaimer:	The molecular sequence of this clone aligns with the gene accession number as a point of reference only. However, individual transcript sequences of the same gene can differ through naturally occurring variations (e.g. polymorphisms), each with its own valid existence. This clone is substantially in agreement with the reference, but a complete review of all prevailing variants is recommended prior to use. More info
OTI Annotation:	This clone was engineered to express the complete ORF with an expression tag. Expression varies depending on the nature of the gene.
Components:	The ORF clone is ion-exchange column purified and shipped in a 2D barcoded Matrix tube containing 10ug of transfection-ready, dried plasmid DNA (reconstitute with 100 ul of water).
RefSeq:	NM_001287582.1 , NP_001274511.1
RefSeq Size:	2187 bp
RefSeq ORF:	1422 bp
Locus ID:	995
UniProt ID:	P30307
Cytogenetics:	5q31.2
Protein Families:	Druggable Genome, Phosphatase, Stem cell - Pluripotency
Protein Pathways:	Cell cycle, Oocyte meiosis, Progesterone-mediated oocyte maturation
MW:	53.3 kDa

Gene Summary:

This gene encodes a conserved protein that plays a key role in the regulation of cell division. The encoded protein directs dephosphorylation of cyclin B-bound CDC2 and triggers entry into mitosis. It also suppresses p53-induced growth arrest. Multiple alternatively spliced transcript variants of this gene have been described. [provided by RefSeq, Dec 2015]