

Product datasheet for **RG238427**

SLC1A7 (NM_001287597) Human Tagged ORF Clone

Product data:

Product Type:	Expression Plasmids
Product Name:	SLC1A7 (NM_001287597) Human Tagged ORF Clone
Tag:	TurboGFP
Symbol:	SLC1A7
Synonyms:	AAAT; EAAT5
Mammalian Cell Selection:	Neomycin
Vector:	pCMV6-AC-GFP (PS100010)
E. coli Selection:	Ampicillin (100 ug/mL)
ORF Nucleotide Sequence:	>RG238427 representing NM_001287597. Blue=ORF Red=Cloning site Green=Tag(s)

```
GCTCGTTTGTAGTGAACCGTCAGAATTTTGTAAACGACTCACTATAGGGCGCCGGGAATTCGTCGACTG
GATCCGGTACCGAGGAGATCTGCCGCCGCGATCGCC
ATGGTGCCGCATGCCATCTTGGCACGGGGAGGGACGTGTGCAGGCGGAATGGACTCCTCATCCTGTCT
GTGCTGTCTGTCACTCGTGGGCTGCCTCCTCGGCTTCTTCTTGAGGACCCGGCGCCTCTCACCACAGGAA
ATTAGTTACTTCCAGTCCCTGGAGAGCTCTGATGAGGATGCTGAAGATGATGATCCTGCCACTGGTG
GTCTCCAGGAACATGTTCCAGCCAACCTAGTAGAAGCCACATCAAACAGTACCGCACCAAGACCACC
CCAGTTGTCAAGTCCCCAAGGTGGCACCAGAGGAGGCCCTCCTCGGCGGATCCTCATCTACGGGGTC
CAGGAGGAGAATGGCTCCCATGTGCAGAACTTCGCCCTGGACCTGACCCCGCCGCGAGGTCGTTTAC
AAGTCAGAGCCGGGCACCAGCGATGGCATGAATGTGCTGGGCATCGTCTTCTTCTGCCACCATGGGC
ATCATGCTGGGCCGCATGGGTGACAGCGGGGCCCCCTGGTCAGCTTCTGCCAGTGCCTCAATGAGTCG
GTCATGAAGATCGTGGCGGTGGCTGTGTGGTATTTCCCCTTCGGCATTGTGTTCCCTATTGCGGGTAAG
ATCCTGGAGATGGACGACCCAGGGCCGTGGCAAGAAGCTGGGCTTCTACTCAGTACCCTGGTGTGC
GGGCTGGTGTCCACGGGCTCTTATCCTGCCCTGCTCTACTTCTTATCACCAGAAGAATCCCATC
GTCTTCCATCCGTGGCATCCTGCAGGCTCTGCTCATCGCGCTGGCCACCTCCTCCAGCTCAGCCACTG
CCCATCACCTTCAAGTGCCTGCTGGAGAACAACCACATCGACCGGCGCATCGCTCGCTTCTGCTGCC
GTGGGTGCCACCATCAACATGGACGGCACTGCGCTCTACGAGGCTGTGGCCGCCATTTTCATCGCCAG
GTCAACAACACTACGAGCTGGACTTTGGCCAGATCATCACCATCAGTATCACAGCCACTGCAGCCAGCATT
GGGGCAGCTGGCATCCCCAGGGCCGCTCGTACCATGGTCATCGTGTGCTCACCTCCGTGGGACTGCC
ACCGATGACATCACCTCATATTGCCGTTGACTGGGCTCTGGACCGTTCCGCACCATGATTAACGTG
CTGGGTGATGCGCTGGCAGCGGGGATCATGGCCATATATGTCGGAAGGATTTTGCCCGGACACAGGC
ACCGAGACCTGTTCCCTTACCAGAACTGCTGCCCTGCGAGACCAAGCCAGTGAAGCTCCAGGAGAT
CGTGGCAGCCAGCAGAATGGCTGTGTGAAGAGTGTAGCCGAGGCTCCGAGCTCACCTGGGCCCCAC
CTGCCCCACCACGTCCCGTTCAAGTGGAGCAGGA
ACGCGTACGCGGCCGCTCGAG - GFP Tag - GTTTAAAC
```



View online »

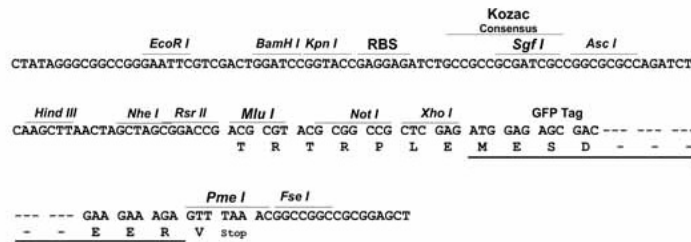
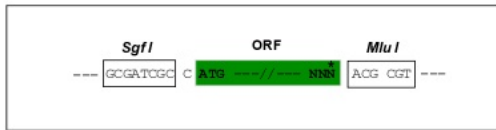
Protein Sequence: >Peptide sequence encoded by RG238427
 Blue=ORF Red=Cloning site Green=Tag(s)

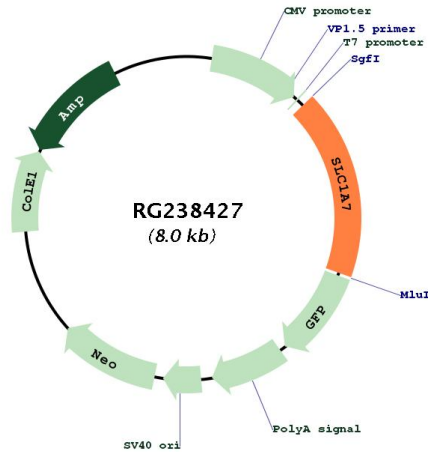
MVPHAILARGRDVCRNGLLILSVLSVIVGCLLGFLLRTRRLSPQEISYFQFPGELLMRMLKMMILPLV
 VSRNMFANLVEATFKQYRTKTPVVKSPKVAPEEAPRRILYGVQEENGSHVQNFALDLTPPEVYV
 KSEPGTSDGMNVLGIVFFSATMGIMLGRMGDSGAPLVSFCQLNESVMKIVAVAVWYFPGIVFLIAGK
 ILEMDDPRAVGKLGFYSVTVVCGLVLHGLFILPLLFFITKKNPIVIRGILQALLIALATSSSSATL
 PITFKCLLENNHIDRRIARFVLPVGATINMDGTALYEAVAAIFIAQVNNYELDFGQIITISITATAASI
 GAAGIPQAGLVTMVIVLTSVGLPTDDITLIIAVDWALDRFRMTINVLGDALAAGIMAHICRKFARDTG
 TETCFPSPETAALRDQASEPPGDRGSPAEWLCEECRGLRAHPGPHLPPRPRSSGAG
 TRTRPLEMESDESGLPAMEIECRITGTLNGVEFELVGGGEGTPEQGRMTNKMSTKGALTFSPYLLSHV
 MGYGFYHFGTYPSGYENPFLHAINNGGYNTRIEKYEDGGVLHVSFSYRYEAGRVIGDFKVMGTGFPED
 SVIFTDKIIRSNATVEHLHPMGDNDLDGSFTRTFLRDGGYSSVVDSHMHFKSAIHPSILQNGGPMFA
 FRRVEEDHSNTELGIVEYQHAFKTPDADAGEERV

Restriction Sites: SgfI-MluI

Cloning Scheme:

Cloning sites used for ORF Shutting:



Plasmid Map:


ACCN:	NM_001287597
ORF Size:	1416 bp
OTI Disclaimer:	The molecular sequence of this clone aligns with the gene accession number as a point of reference only. However, individual transcript sequences of the same gene can differ through naturally occurring variations (e.g. polymorphisms), each with its own valid existence. This clone is substantially in agreement with the reference, but a complete review of all prevailing variants is recommended prior to use. More info
OTI Annotation:	This clone was engineered to express the complete ORF with an expression tag. Expression varies depending on the nature of the gene.
Components:	The ORF clone is ion-exchange column purified and shipped in a 2D barcoded Matrix tube containing 10ug of transfection-ready, dried plasmid DNA (reconstitute with 100 ul of water).
RefSeq:	NM_001287597.2
RefSeq Size:	2499 bp
RefSeq ORF:	1419 bp
Locus ID:	6512
UniProt ID:	O00341
Cytogenetics:	1p32.3
Protein Families:	Transmembrane
MW:	51.7 kDa
Gene Summary:	Transports L-glutamate; the L-glutamate uptake is sodium- and voltage-dependent and chloride-independent. Its associated chloride conductance may participate in visual processing.[UniProtKB/Swiss-Prot Function]