

Product datasheet for **RG238424**

RBPSUHL (RBPJL) (NM_001281448) Human Tagged ORF Clone

Product data:

Product Type:	Expression Plasmids
Product Name:	RBPSUHL (RBPJL) (NM_001281448) Human Tagged ORF Clone
Tag:	TurboGFP
Symbol:	RBPSUHL
Synonyms:	RBPL; RBPSUHL; SUHL
Mammalian Cell Selection:	Neomycin
Vector:	pCMV6-AC-GFP (PS100010)
E. coli Selection:	Ampicillin (100 ug/mL)
ORF Nucleotide Sequence:	>RG238424 representing NM_001281448. Blue=ORF Red=Cloning site Green=Tag(s)

```
GCTCGTTTGTAGTAACCGTCAGAATTTGTAAACGACTACTATAGGGCGCCGGGAATTCGTCGACTG
GATCCGGTACCGAGGAGATCTGCCGCCGCGATCGCC
ATGGACCCCGCAGGGGCAGCAGACCCCTCAGTGCCTCCCAATCCTTTGACTCACCTGAGCCTGCAGGAC
AGATCAGAGATGCAGCTGCAGAGCGAAGCCGACAGGGCGGAGCCTCCCGGGCACTTGGACCAGGTCATCC
CCAGAGCACACCACCATCTGAGGGGAGGCGTGCAGAGTGCCTGCAGCAACAGTGTGAACAGACTGTG
CGGATCCTGCATGCCAAGGTGGCCAGAAATCATACGGAAATGAGAAGCGGTTCTTCTGCCCCCGCCC
TGTGTCTACCTCTCGGGCCTGGCTGGAGGTGAAGCCAGGCAGGATCAAGCTCACCAGCGGGGGAA
ACGGGGCCACGGTCTGCGGTTACATGGGACTGGACAGCGGTCCGGCAGCGCCACTGAGACGCAGAAG
CTGAATTCGAGCAGCAGCCGGACTCCAGGAATTCGGCTGCGCCAAGACCCTGTACATCTCAGATGCA
GACAAGAGGAAGCACTTTCGGCTGGTGTGCTGCGGCTGGTGTGCTGCGCGGGGGCCGGGAGCTGGGTACCTTC
CACAGCCGCTTATCAAGGTCATCTCGAAGCCCTCGCAGAAGAAGCAGTCGCTGAAAAACACCGATCTG
TGCATATCCTCCGGCTCAAAGGTCCTCCCTTCAACCGCTGCGCTCTCAGACGGTCTCCACACGCTAC
CTCTCTGTGGAGGATGGGGCCTTTGTGGCCAGTGCACGACAGTGGGCTGCCTTACGCTCCACCTGGCT
GATGGGCACTCTGCCAAGGAGACTTCCACCCGAGAGGGCTACGTTGCTATGGCTCCCTGGTGCAG
CTCGTCTGCACGGTCACCGGCATCACACTACCTCCCATGATCATCCGTAAGTAGCAAAACAGTGTGGC
CTCCTTGATGTGGATGAGCCCATCTCCAGCTGCACAAGTGTGCATTCCAGTTTCCAGGCAGTCCCCCA
GGAGGGGTGGCACCTACTTATGCCTTGCCACAGAGAAGGTGGTGAATTTAGGGCTCTCCCTGCCCC
AAGGAGGCGAACAGGGCTCTGCTTAACGACAGCTCTTGTGACCATCATCGGCACCGAGTCGGTGGAA
TTTTCTTTCAGCACCAGCCTGGCGTGTACCCTGGAGCCGGTCACTCCGGTGCCTCTCATCAGCACCTA
GAGCTGAGCGGGGGGCGACGTGGCCACGCTGGAGCTCCACGGAGAGAACTTCCACGGGGGCTCAAG
GTGTGTTTGGGACGTGGAGGCAGAAACCATGTACAGGTACGGGTGGAGCCCGCGGTCCCTGGTGTG
CGTGGTCCGGACGTGGCGCCTTCTGCAGCGACTGGCGTGGCTGCGCGCTCCCATCACAATCCCCAT
GAGCCTGGTGCAGCGCCGACGGGCTTTTACCC
ACGCGTACGCGGCCGCTCGAG - GFP Tag - GTTAAAC
```



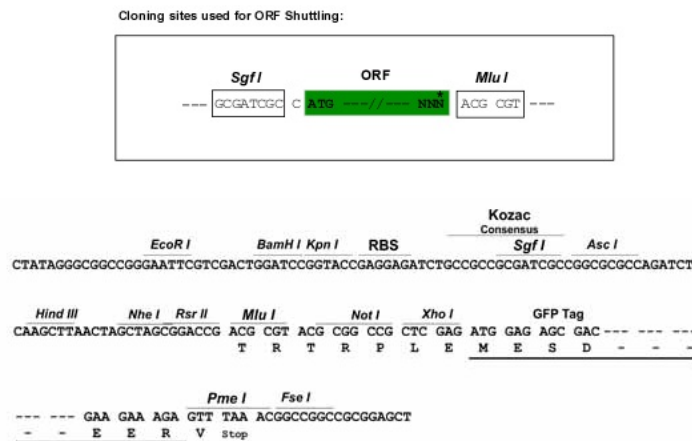
View online »

Protein Sequence: >Peptide sequence encoded by RG238424
 Blue=ORF Red=Cloning site Green=Tag(s)

MDPAGAADPSVPPNPLTHLSLQDRSEMQLQSEADRRSLPGTWTRSSPEHTTILRGGVRRCLQQQCEQTV
 RILHAKVAQKSYGNEKRFFCPPPCVYLSPGWVRVKPGDQAHQAGETGPTVCGYMGDLSASGSATETQK
 LNFEQQPDSREFGCAKTLYISDADKRKHFRLVLRLLVLRGGRELGTFFHSRLIKVISKPSQKKQSLKNTDL
 CIISSGKVSLEFNRLRSQTVSTRYLSVEDGAFVASARQWAAFTLHLADGHSAQGDFPPREGVYRYGSLVQ
 LVCTVTGITLPPMIIRKVAKQCALLDVDEPISQLHKCAFQPGSPGGGGTYLCLATEKVVFQASPCP
 KEANRALLNDSSCWTIIGTESVEFSFSTSLACTLEPVTVPVPLISTLELSGGGDVATLELHGENFHAGLK
 VWFVDVEAETMYRYGVEPAVPGVRGAGRGGLLQRLALAAARSHHNPHEPGARRRALLP
TRTRPLEMESDESGLPAMEIECRITGTLNGVEFELVGGEGTPEQGRMTNKMSTKGALTFSPYLLSHV
 MGYGFYHFGTYPSTYENPFLHAINNGGYNTRIEKYEDGGVLHVSFSYRYEAGRVIGDFKVMGTGFPED
 SVIFTDKIIIRSNATVEHLHPMGDNDLDGSFTRTFSLRDGGYSSVVDSHMHFKSAIHPSILQNGGPMFA
 FRRVEEDHSNTELGIVEYQHAFKTPDADAGEERV

Restriction Sites: SgfI-MluI

Cloning Scheme:



ACCN: NM_001281448

ORF Size: 1413 bp

OTI Disclaimer: The molecular sequence of this clone aligns with the gene accession number as a point of reference only. However, individual transcript sequences of the same gene can differ through naturally occurring variations (e.g. polymorphisms), each with its own valid existence. This clone is substantially in agreement with the reference, but a complete review of all prevailing variants is recommended prior to use. [More info](#)

OTI Annotation: This clone was engineered to express the complete ORF with an expression tag. Expression varies depending on the nature of the gene.

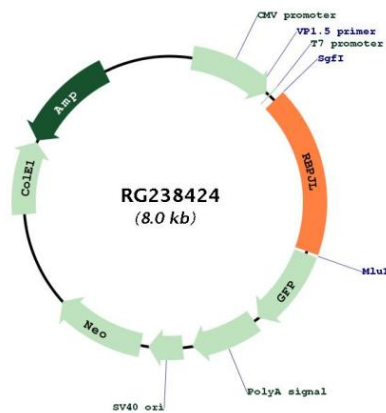
Components: The ORF clone is ion-exchange column purified and shipped in a 2D barcoded Matrix tube containing 10ug of transfection-ready, dried plasmid DNA (reconstitute with 100 ul of water).

RefSeq: [NM_001281448.2](#)

RefSeq Size: 2509 bp
RefSeq ORF: 1416 bp
Locus ID: 11317
UniProt ID: [Q9UBG7](#)
Cytogenetics: 20q13.12
Protein Families: Druggable Genome, Transcription Factors
Protein Pathways: Notch signaling pathway
MW: 51.7 kDa

Gene Summary: This gene encodes a member of the suppressor of hairless protein family. A similar protein in mouse is a transcription factor that binds to DNA sequences almost identical to that bound by the Notch receptor signaling pathway transcription factor recombining binding protein J. The mouse protein has been shown to activate transcription in concert with Epstein-Barr virus nuclear antigen-2. Alternative splicing results in multiple transcript variants. [provided by RefSeq, Jul 2013]

Product images:



Circular map for RG238424