

Product datasheet for **RG238421**

ULK3 (NM_001284364) Human Tagged ORF Clone

Product data:

Product Type:	Expression Plasmids
Product Name:	ULK3 (NM_001284364) Human Tagged ORF Clone
Tag:	TurboGFP
Symbol:	ULK3
Mammalian Cell Selection:	Neomycin
Vector:	pCMV6-AC-GFP (PS100010)
E. coli Selection:	Ampicillin (100 ug/mL)
ORF Nucleotide Sequence:	>RG238421 representing NM_001284364. Blue=ORF Red=Cloning site Green=Tag(s)

```
GCTCGTTTAGTGAACCGTCAGAATTTTGTAAACGACTCACTATAGGGCGGCCGGGAATTCGTCGACTG
GATCCGGTACCGAGGAGATCTGCCGCCGCGATCGCC
ATGGCGGGGCCCGGCTGGGGTCCCCCGCGCTGGACGGCTTCATCCTCACCGAGCGCCTGGGCAGCGGC
ACGTACGCCACGGTGTACAAGGCCTACGCCAAGAAGGACACTCGTGAAGTGGTAGCCATAAAGTGTGTA
GCCAAGAAAAGTCTGAACAAGGCATCGGTGGAGAACCTCCTCACGGAGATTGAGATCCTCAAGGGCATT
CGACATCCCACATTGTGCAGCTGAAAGACTTTCAGTGGGACAGTGACAATATCTACCTCATCATGGAG
TTTTGCGCAGGGGGCGACCTGTCTCGCTCATCCATACCCGCAGGATTCTGCCTGAGAAGGTGGCGCGT
GTCTTCATGCAGCAATTAGTAGCGCCCTGCAATTCCTGCATGAACGGAATATCTCACCTGGATCTG
AAGCCACAGAACATTCTACTGAGCTCCTTGGAGAAGCCCCACCTAAAACGGCAGACTTTGGTTTCGCA
CAACACATGTCCCGTGGGATGAGAAGCACGTGCTCCGTGGCTCCCCCTCTACATGGCCCCGAGATG
GTGTGCCAGCGGAGATGACGCCCGCTGGACCTCTGGTCCATGGGGTTCATCCTGTATGAAGCCCTC
TTCGGGACGCCCCCTTGCCTCCAGGTCGTTCTCGGAGCTGGAAGAGAAGATCCGTAGCAACCGGGTC
ATCGAGCTCCCCTTGGCGCCCTGCTCTCCGAGACTGCCGGACCTACTGCAGCGGCTCCTGGAGCGG
GACCCAGCCGTCGCATCTCCTCCAGGACTTTTTGCGCACCCCTGGGTGGACCTGGAGACATGCC
AGTGGGAGAGTCTGGGCGAGCAACCGCCCTGGTGGTGCAGGCTGTGAAGAAAGACCAGGAGGGGAT
TCAGCAGCTGCCTTACTCTACTGCAAGGCTCTGGACTTCTTTGTACCTGCCCTGCATATGAAGTG
GATGCCACGCGGAAGGAGCAATTAAGGCAAGGTGGGGCAGTACGTGTCCCGGGCTGAGGAGCTCAAG
GCCATCGTCTCCTTCCAATCAGGCCCTGCTGAGGCAGGGGACCTCTGCCCGAGACCTGCTCAGAGAG
ATGGCCCGGGACAAGCCACGCCTCCTAGCTGCCCTGGAAGTGGCTTCAGCTGCCATGGCCAAGGAGGAG
GCCCGCGGGGAGCAGGATGCCCTGGACCTGTACCAGCACAGCCTGGGGGAGCTACTGCTGTTGCTG
GCAGCGGAGCCCCGGGCGGAGCGGGAGCTGCTTCACTGAGGTTTCAAGACCTATGGCCCCGAGCT
GAATACTTGAAGGAGCAGATGAGGGAATCTCGCTGGGAAGCTGACACCCTGGACAAGAGGGGACTGTC
GAATCTGTTTCGTAGCTCTTGACCCCTCAG
ACGCGTACGCGGCCGCTCGAG - GFP Tag - GTTTAAAC
```



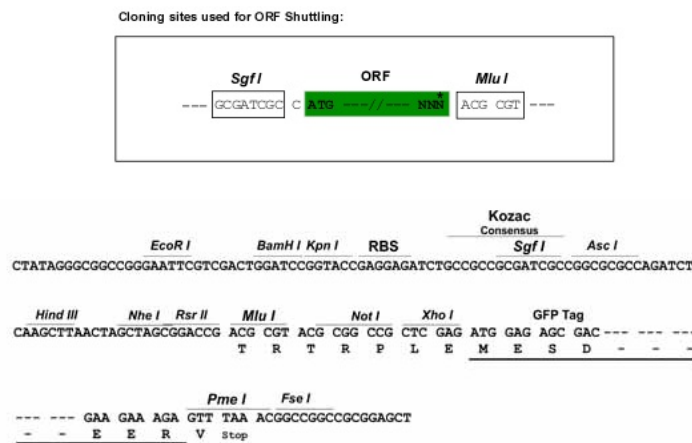
[View online »](#)

Protein Sequence: >Peptide sequence encoded by RG238421
 Blue=ORF Red=Cloning site Green=Tag(s)

MAGPGWGPPRLDGFILTERLGSPTYATVYKAYAKKDTREVVAIKCVAKKSLNKASVENLLTEIEILKGI
 RHPHIVQLKDFQWSDNIYLIMEFCAGGDLSRFIHTRRILPEKVARVFMQQLASALQFLHERNISHLDL
 KPQNILLSLEKPHLKLADFGFAQHMSPWDEKHVLRGSPLYMAPEMVCQRQYDARVDLWSMGVILYEAL
 FGQPPFASRSFSELEEKIRSNRVIELPLRPLL SRDCRDL LQRLLERDPSRRI SFQDFFAHPWVDLEHMP
 SGESLGRATALVVQAVKKDQEGDSAAALSLYCKALDFFVPALHYEVDAQRKEAIKAKVGQYVSRAEELK
 AIVSSNQALLRQGT SARDLLREMARKPRL LAAL EVASAA MAKEEAAGGEQDALDL YQHSLGELLLLLL
 AAEPGRRELHTEVQNL MARAEYLKEQMRESRWEADTL DKEGLSESVRSCTLQ
 TRTRPLEMESDEGLPAMEIECRITGTLNGVEFELVGGEGTPEQGRMTNKMSTKGALTFSPYLLSHV
 MGYGFYHFGTYPSGYENPFLHAINNGGYNTRIEKYEDGGVLHVSFSYRYEAGRVIGDFKVMGTGFPED
 SVIFTDKIIRSNATVEHLHPMGDNDLDGSFTRTFLRDGGYSSVVD SHMHFKSAIHPSILQNGGPMFA
 FRRVEEDHSNTELGIVEYQHAFKTPDADAGEERV

Restriction Sites: SgfI-MluI

Cloning Scheme:



ACCN: NM_001284364

ORF Size: 1410 bp

OTI Disclaimer: The molecular sequence of this clone aligns with the gene accession number as a point of reference only. However, individual transcript sequences of the same gene can differ through naturally occurring variations (e.g. polymorphisms), each with its own valid existence. This clone is substantially in agreement with the reference, but a complete review of all prevailing variants is recommended prior to use. [More info](#)

OTI Annotation: This clone was engineered to express the complete ORF with an expression tag. Expression varies depending on the nature of the gene.

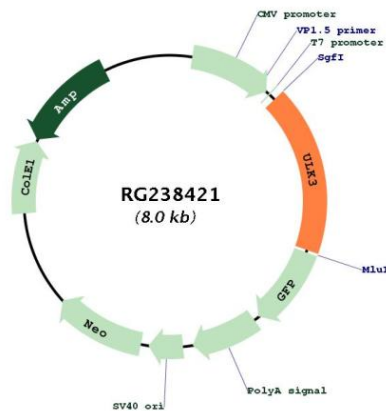
Components: The ORF clone is ion-exchange column purified and shipped in a 2D barcoded Matrix tube containing 10ug of transfection-ready, dried plasmid DNA (reconstitute with 100 ul of water).

RefSeq: [NM_001284364.3](#)

RefSeq Size: 2638 bp
RefSeq ORF: 1413 bp
Locus ID: 25989
UniProt ID: [Q6PHR2](#)
Cytogenetics: 15q24.1
Protein Families: Druggable Genome, Protein Kinase
Protein Pathways: mTOR signaling pathway, Regulation of autophagy
MW: 53.7 kDa

Gene Summary: Serine/threonine protein kinase that acts as a regulator of Sonic hedgehog (SHH) signaling and autophagy. Acts as a negative regulator of SHH signaling in the absence of SHH ligand: interacts with SUFU, thereby inactivating the protein kinase activity and preventing phosphorylation of GLI proteins (GLI1, GLI2 and/or GLI3). Positively regulates SHH signaling in the presence of SHH: dissociates from SUFU, autophosphorylates and mediates phosphorylation of GLI2, activating it and promoting its nuclear translocation. Phosphorylates in vitro GLI2, as well as GLI1 and GLI3, although less efficiently. Also acts as a regulator of autophagy: following cellular senescence, able to induce autophagy.[UniProtKB/Swiss-Prot Function]

Product images:



Circular map for RG238421