

Product datasheet for **RG238420**

EYA1 (NM_001288575) Human Tagged ORF Clone

Product data:

Product Type:	Expression Plasmids
Product Name:	EYA1 (NM_001288575) Human Tagged ORF Clone
Tag:	TurboGFP
Symbol:	EYA1
Synonyms:	BOP; BOR; BOS1; OFC1
Mammalian Cell Selection:	Neomycin
Vector:	pCMV6-AC-GFP (PS100010)
E. coli Selection:	Ampicillin (100 ug/mL)
ORF Nucleotide Sequence:	>RG238420 representing NM_001288575. Blue=ORF Red=Cloning site Green=Tag(s)

```
GCTCGTTTAGTGAACCGTCAGAATTTGTAAACGACTCACTATAGGGCGCCGGGAATTCGTCGACTG
GATCCGGTACCGAGGAGATCTGCCGCCGCGATCGCC
ATGCAACAAGCTACAGCCTATGCCACGTACCCACAGCCAGGACAGCCGTACGGCATTTCCTCATATGGC
ATCAAGACTGAAGGTGGATTGTACAGTCTCAGTCACCTGGACAGACAGGATTTCTCAGCTATGGCACA
AGCTTCAGTACCCTCAACCTGGACAGGACCACACAGCTACCAGATGCAAGGTAGCAGTTTTACAACA
TCATCAGGAATATACAGGAAATAATCACTCACAATTCCTCTGGATTAATAGTTTACAGCAGGAC
TATCCGCTTATCCAGTTTTGGCCAGGGTCAGTACGCACAGTATTATAACAGCTCACCGTATCCAGCA
CATTATATGACCAGCAGCAACACCAGCCCAACGACACCATCCACCAATGCCACTTACCAGCTTCAAGAA
CCGCCATCTGGCATCACCAGCCAAGCAGTTACAGATCCCACAGCAGAGTACAGCACAATCCACAGCCCA
TCAACACCATTAAAGATTGAGATTCTGATCGATTGCGTTCGAGGTTTACAGTGGGAAATCAGTGGACGG
GGCCGAAGAAACAATAATCCTTCACCTCCCCAGATTCTGATCTTGAGAGAGTGTTCATCTGGGACTTG
GATGAGACAATCATTGTTTTCCACTCCTTGCTTACTGGGTCTACGCCAACAGATATGGGAGGGATCCA
CCCCTTCACTTTCCCTTGGACTGCGAATGGAAGAAATGATTTTCACTTGGCAGACACACATTTATTT
TTTAAAGACTTAGAAGAATGTGACCAAGTCCATATAGATGATGTTTCTTCCAGATGATAACGGACAGGAC
CTAAGCACATATAACTTTGGAACAGATGGCTTTCTGCTGCAGCAACCAGTGCTAACTTATGTTTTGGCA
ACTGGTGTACGGGCGGTGTGGACTGGATGAGAAAGTTGGCCTCCGCTACAGACGGGTAAGAGATC
TACAACACCTACAAAAATAATGTTGGAGGTCTGCTTGGTCCAGCTAAGAGGGAAGCCTGGCTGCAGTTG
AGGGCCGAAATTAAGCCCTGACCGACTCCTGGTTGACACTGGCCCTGAAAGCACTCTCGCTCATTAC
TCCCGGACAACTGTGTGAATATTTAGTAACTACTCAGCTCATCCCAGCATTGGCGAAAGTCTCTG
CTGTATGGGTTAGGAATTGATTTCCAATAGAAAAATTTACAGTGCAACTAAAAAGGAAAAGAAAGC
TGTTTTGAGAGAATAATCAAAGGTTTGAAGAAAAGTGGTGTATGTTGTTATAGGAGATGGTGTAGAA
GAAGAACAAGGAGCAAAAAGCACGCGATGCCCTTCTGGAGGATCTCCAGCCACTCGGACCTCATGGCC
CTGCACCATGCCTTGGAACTGGAGTACCTG
ACGCGTACGCGGCCGCTCGAG - GFP Tag - GTTAAAC
```



[View online »](#)

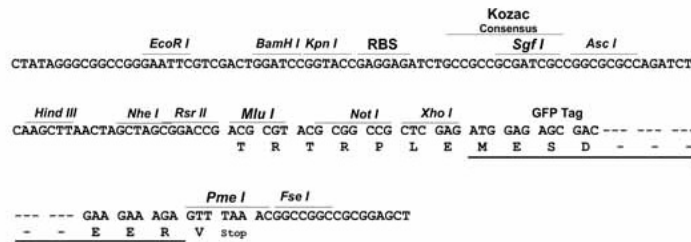
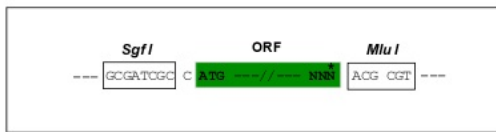
Protein Sequence: >Peptide sequence encoded by RG238420
 Blue=ORF Red=Cloning site Green=Tag(s)

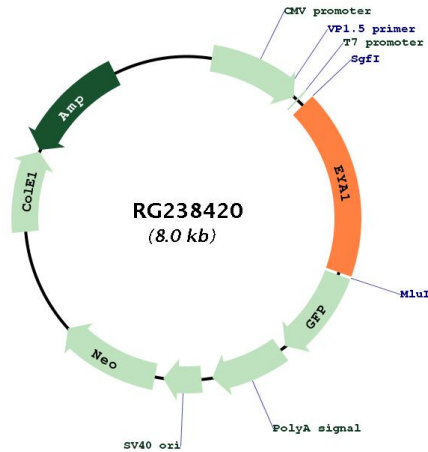
MQQATAYATYPQPGQPYGISSYGIKTEGGLSQSQSPGQTGFLSYGTSFSTPQPGQAPYSYQMGGSSFTT
 SSGIYTGNNLSNSSGFNSSQDYPSYPSFGQGQYAQYNNSSYPYAHYMTSSNTSPTTPSTNATYQLQE
 PPSGITSQAVTDPTAEYSTIHSPTPIKSDSDRLRRGSDGKSRGRGRNNNPPSPPPDSDLERVF IIDL
 DETIIVFHSLLTGSYANRYGRDPPTSIVSLGLRMEEMIFNLADTHLFFNDLEECDQVHIDDVSSDDNGQD
 LSTYNFGTDGFPAATSANLCLATGVRGGVDWMRKLAFRYRRVKEIYNTYKNNVGLLGPAKREAWLQL
 RAEIEALTDSWLTALAKALSLIHSRTNCVNILVTTTQLIPALAKVLLYGLGIVFPNIENIYATKIGKES
 CFERIIQRFGRKVVVVVIGDGVVEEQGAKKHAMPFWRISSHSDLMALHHALELEYL
TRTRPLEMESDESGLPAMEIECRITGTLNGVEFELVGGEGTPEQGRMTNKMSTKGALTFSPYLLSHV
 MGYGFYHFGTYPSTYENPFLHAINNGGYNTRIEKYEDGGVLHVSFSYRYEAGRVIGDFKVMGTGFPED
 SVIFTDKIIRSNATVEHLHPMGDNDLDGSFTRTFSLRDGGYSSVVDSHMHFKSAIHPSILQNGGPMFA
 FRRVEEDHSNTELGIVEYQHAFKTPDADAGEERV

Restriction Sites: SgfI-MluI

Cloning Scheme:

Cloning sites used for ORF Shutting:



Plasmid Map:


ACCN:	NM_001288575
ORF Size:	1410 bp
OTI Disclaimer:	The molecular sequence of this clone aligns with the gene accession number as a point of reference only. However, individual transcript sequences of the same gene can differ through naturally occurring variations (e.g. polymorphisms), each with its own valid existence. This clone is substantially in agreement with the reference, but a complete review of all prevailing variants is recommended prior to use. More info
OTI Annotation:	This clone was engineered to express the complete ORF with an expression tag. Expression varies depending on the nature of the gene.
Components:	The ORF clone is ion-exchange column purified and shipped in a 2D barcoded Matrix tube containing 10ug of transfection-ready, dried plasmid DNA (reconstitute with 100 ul of water).
RefSeq:	NM_001288575.2
RefSeq Size:	4259 bp
RefSeq ORF:	1413 bp
Locus ID:	2138
UniProt ID:	Q99502
Cytogenetics:	8q13.3
Protein Families:	Druggable Genome, Phosphatase, Transcription Factors
MW:	52.3 kDa

Gene Summary:

This gene encodes a member of the eyes absent (EYA) family of proteins. The encoded protein may play a role in the developing kidney, branchial arches, eye, and ear. Mutations of this gene have been associated with branchiootorenal dysplasia syndrome, branchiootic syndrome, and sporadic cases of congenital cataracts and ocular anterior segment anomalies. A similar protein in mice can act as a transcriptional activator. Alternatively spliced transcript variants have been identified for this gene. [provided by RefSeq, Dec 2013]