

## Product datasheet for **RG238417**

### **GBA3 (NM\_001277225) Human Tagged ORF Clone**

#### Product data:

Product Type:	Expression Plasmids
Product Name:	GBA3 (NM_001277225) Human Tagged ORF Clone
Tag:	TurboGFP
Symbol:	GBA3
Synonyms:	CBG; CBGL1; GLUC; KLRP
Mammalian Cell Selection:	Neomycin
Vector:	pCMV6-AC-GFP (PS100010)
E. coli Selection:	Ampicillin (100 ug/mL)
ORF Nucleotide Sequence:	>RG238417 representing NM_001277225. Blue=ORF Red=Cloning site Green=Tag(s)

```
GCTCGTTTGTGAAACCGTCAGAATTTGTAAACGACTCACTATAGGGCGCCGGGAATTCGTCGACTG
GATCCGGTACCGAGGAGATCTGCCGCCGCGATCGCC
ATGTCCCTTTACACTTGCTTGGTGGAGATAACTCTTCCCTCCATTTAGAAGAAAACGTAGGAGGCTGG
GATGCAGATGGAAAAGGCCCTTGTGTCTGGGACACATTTACTCATCAGGGAGGAGAGAGATTTTCAAG
AACCAGACTGGCGATGTAGCTTGTGGCAGCTACACTCTGTGGGAGGAAGATTTGAAATGTATCAAACAG
CTTGGATTGACTCATTACCGCTTCTCTCTTTCCTGGTACGCTCTGTTACCTGATGGGACGACAGGTTTC
ATCAACCAGAAAGGAATTGATTATTACAACAAGATCATCGATGATTTGTTAAAAAATGGGGTTACTCCC
ATTGTGACCTCTACCACTTTGATTTGCCTCAGACTTTAGAAGACCAAGGAGTTGGTTGTCAGAGGCA
ATCATTGAATCCTTTGACAAATATGCTCAGTTTTGCTTACAGTACCTTTGGGGATCGTGTCAGCAGTGG
ATCACCATAAATGAAGCTAATGTTCTTTCTGTGATGTCATATGACTTAGGTATGTTTCTCCGGGTATC
CCTCACTTTGGGACTGGAGGTTATCAGGCAGCTCATAATTTGATTAAGGCTCATGCCAGATCCTGGCAC
AGCTATGATTCTTATTTTCGAAAAAGCAGAAAGGTATGGTGTCTCTATCACTTTTTGCGGTCTGGTTG
GAACCAGCAGATCCCACTCAGTGTCTGACCAGGAAGTGTCTAAAAGAGCCATCACTTTCCATCTGGAT
TTATTTGCTAAACCCATATTCATCGATGGTGATTATCCTGAAGTTGTCAAGTCTCAGATTGCCTCCATG
AGTCAAAGCAAGGCTATCCATCATCGAGGCTTCCAGAATTCAGTGAAGAAGAGAAGAAAATGATCAAA
GGCACTGCTGATTTTTTGTCTGTCAATATTATACAACTCGCTTAATCAAGTACCAGGAGAACAAGAAA
GGAGAACTAGGTATTCTCCAGGATGCGGAAATGAATTTTTTCCAGATCCATCTTGGAAAAATGTGGAT
TGGATCTACGTGGTACCATGGGAGTATGTAAACTACTGAAATATATTAAGGATACATATAATAACCTT
GTAATTTACATCACTGAGAATGGGTTTCCCCAGAGTGACCCAGCGCTCTTGATGACACTCAACGCTGG
GAGTATTTAGACAAACATTTCCAGGAAGTGTCAAAGCTATCCAAGTGAATAAGTCAATCTTCAAGTA
TATTGTGCATGGTCTCTTCTGGATAACTTTGAGTGAACCCAGGGATACAGCAGCCGGTTTGGTCTCTTC
CACGTTGATTTTGAAGACCCAGCTAGACCCCGAGTCCCTTACACATCGGCCAAGGAATATGCCAAGATC
ATCCGAAACAATGGCCTTGAAGCACATCTG
ACGCGTACGCGGCCGCTCGAG - GFP Tag - GTTTAAAC
```



[View online »](#)

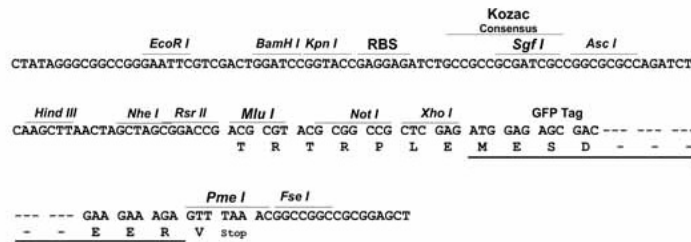
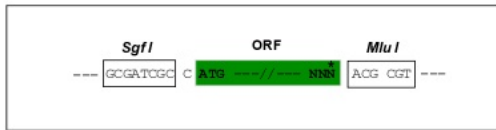
**Protein Sequence:** >Peptide sequence encoded by RG238417  
 Blue=ORF Red=Cloning site Green=Tag(s)

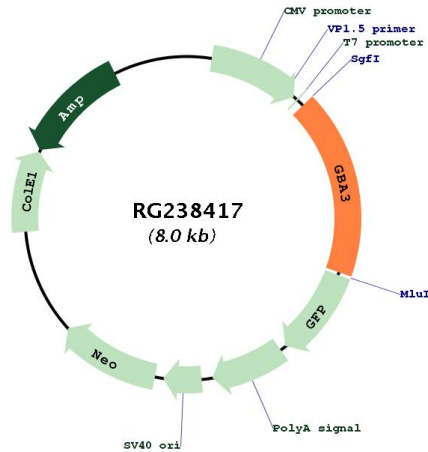
MSLYTCLVEITLPHLEENVGGWDADGKGPCVWDTFTHQGGERVFKNQTDVACGSYTLWEEDLKCIKQ  
 LGLTHYRFSLSWSRLLPDGTTGFINQKIDYYNKIIDDLLKNGVTPIVTLYHFDLPQTLEDQGGWLS  
 IIESFDKYAQFCSTFGDRVKQWITINEANVLSVMSYDLGMFPPIPHFGTGGYQAAHNLKHAHARSWH  
 SYDSLFRKKQKGMVSLSLFAVWLEPADPNSVSDQEAAKRAITFHLDLFAKPIFIDGDYPEVVKSQIASM  
 SQKQGYSSRLPEFTEEEKMKIKGTADFFAVQYYTTRLIKYQENKKGELGTLQDAEIEFFDPSWKNVD  
 WIYVVPWGVCKLLKYIKDTYNNPVIYITENGFQSDPAPLDLDTQRWEYFRQTFQELFKAIQLDKVNLQV  
 YCAWSLLDNFEWNQGYSSRFGLFHVDFEDPARPRVPYTSKEYAKIIRNNGLEAHL  
**TRTRPLEMESDESGLPAMEIECRITGTLNGVEFELVGGEGTPEQGRMTNKMSTKGALTFSPYLLSHV**  
 MGYGFYHFGTYPSGYENPFLHAINNGGYNTRIEKYEDGGVLHVSFSYRYEAGRVIGDFKVMGTGFPED  
 SVIFTDKIIRSNATVEHLHPMGDNDLDGSFTRTFLRDGGYSSVVDSHMHFKSAIHPSILQNGGPMFA  
 FRRVEEDHSNTELGIVEYQHAFKTPDADAGEERV

**Restriction Sites:** SgfI-MluI

**Cloning Scheme:**

Cloning sites used for ORF Shutting:



**Plasmid Map:**


<b>ACCN:</b>	NM_001277225
<b>ORF Size:</b>	1410 bp
<b>OTI Disclaimer:</b>	The molecular sequence of this clone aligns with the gene accession number as a point of reference only. However, individual transcript sequences of the same gene can differ through naturally occurring variations (e.g. polymorphisms), each with its own valid existence. This clone is substantially in agreement with the reference, but a complete review of all prevailing variants is recommended prior to use. <a href="#">More info</a>
<b>OTI Annotation:</b>	This clone was engineered to express the complete ORF with an expression tag. Expression varies depending on the nature of the gene.
<b>Components:</b>	The ORF clone is ion-exchange column purified and shipped in a 2D barcoded Matrix tube containing 10ug of transfection-ready, dried plasmid DNA (reconstitute with 100 ul of water).
<b>RefSeq:</b>	<a href="#">NM_001277225.1</a> , <a href="#">NP_001264154.1</a>
<b>RefSeq Size:</b>	2091 bp
<b>RefSeq ORF:</b>	1413 bp
<b>Locus ID:</b>	57733
<b>UniProt ID:</b>	<a href="#">Q9H227</a>
<b>Cytogenetics:</b>	4p15.2
<b>Protein Pathways:</b>	Cyanoamino acid metabolism, Starch and sucrose metabolism
<b>MW:</b>	54.5 kDa

**Gene Summary:**

The protein encoded by this gene is an enzyme that can hydrolyze several types of glycosides. This gene is a polymorphic pseudogene, with the most common allele being the functional allele that encodes the full-length protein. Some individuals, as represented by the reference genome allele, contain a single nucleotide polymorphism that results in a premature stop codon in the coding region, and therefore this allele is pseudogenic due to the failure to produce a functional full-length protein. Alternative splicing of this gene results in multiple transcript variants. [provided by RefSeq, Mar 2013]