

Product datasheet for **RG238413**

DNAJC16 (NM_001287811) Human Tagged ORF Clone

Product data:

Product Type:	Expression Plasmids
Product Name:	DNAJC16 (NM_001287811) Human Tagged ORF Clone
Tag:	TurboGFP
Symbol:	DNAJC16
Mammalian Cell Selection:	Neomycin
Vector:	pCMV6-AC-GFP (PS100010)
E. coli Selection:	Ampicillin (100 ug/mL)
ORF Nucleotide Sequence:	>RG238413 representing NM_001287811. Blue=ORF Red=Cloning site Green=Tag(s)

```
GCTCGTTTAGTGAACCGTCAGAATTTTGTAAATACGACTCACTATAGGGCGGCCGGGAATTCGTCGACTG
GATCCGGTACCGAGGAGATCTGCCGCCGCGATCGCC
ATGACAAGGCGGTACAACATCAATATCTACGCCCTACCCCTTTGGTCTTTAAAGAACATATAAACAGG
CCTGCCGATGTTATCCAGGCCGAGGTATGAAGAAGCAAATCATTGACGACTTCAACCCGAAACAAA
TATCTATTGGCAGCCAGGCTCACCAGCCAGAAGTTGTTCCATGAAGTCTGCCCTGTGAAACGGTCGCAT
CGACAGAGGAAGTACTGTGTGGTTTTATTGACTGCTGAGACTACCAAGTTGAGCAAACCCTTTGAGGCT
TTCTGTCTTTGCCCTGGCAAACACTCAAGACACAGTGAGATTTGTGCATGTCTACAGCAATCGGCAG
CAGGAGTTTGCCGACACCTTACTACCAGACAGTGAGGCGTTTCAAGGGAAATCAGCGGTGTCTATTTTA
GAAAGGCGCAACACAGCAGGAAGGGTGGTGTATAAAACCTGGAAGACCCCTGGATTGGGAGTGAGAGT
GACAAATTTATCCTCTTGGGCTATCTCGACCAGCTGCGTAAAGATCCAGCTCTTCTGTCCCTGAAGCA
GTGCTTCTGACCTGACCGATGAAGTGGCCCTGTTTTCTCCTTCGATGGTTCTACTCTGCTTCTGAC
TACATCTCAGACTGCTGGGATAGCATTTCACAACAAGTGGAGGGAAATGATGCCCTGCTGTCCCTG
ATCTTCTCTGCCCTTTCATCCTCTTCGGCACTGTTCATCGTTTCCAGGCTTTCAGCGACTCTAATGATGAG
CGAGAGTCAAGCCCTCCAGAAAAAGAGGAAGCCCAAGAGAAGACTGGGAAACTGAGCCAAGCTTACC
AAAGAAAACAGCAGCAAGATTCCTAAAAAGGCTTTGTGGAGGTAAGTGAAGTCAAGATGAACATAC
ACCAGTAACTTGGTACGTCTGAGGCCAGCCACATGAATGTGGTCTCATCTGTGCAATTTACCAAG
ACCAGCCTACTACAGAAATTTGCTTTGGAGGTCTACACATTTACTGGGAGCAGCTGCCTACACTTCTCC
TTCTGAGTCTAGATAAACACAGAGAATGGCTAGAATACTTACTAGAATTTGCTCAAGATGCAGCTCCA
ATCCCAAACCAATATGATAAGCATTTCATGGAGCGTGACTACACTGGTTATGACTGGCTCTGAATGGC
CACAAGAAATACTTCTGCCTCTTCAAGCCCCAAAAGACAGTCAAGAGAGGAGGAAGCCATAGGGTCGTGC
AGTGATGTTGACTCTTCCCTCTACCTGGGTGAATCTCGAGGGAAACCTTCTGTGGCCTTGGATCCAGG
CCCATCAAAGGAAAGTTGAGCAAGCTCTTTATGGATGGAACGCTGCTGGAGGGCTCCTTACAGAGG
TTTTATATCCCATCATGGCCTGAAGTACAG
ACGCGTACGCGGCCGCTCGAG - GFP Tag - GTTAAAC
```



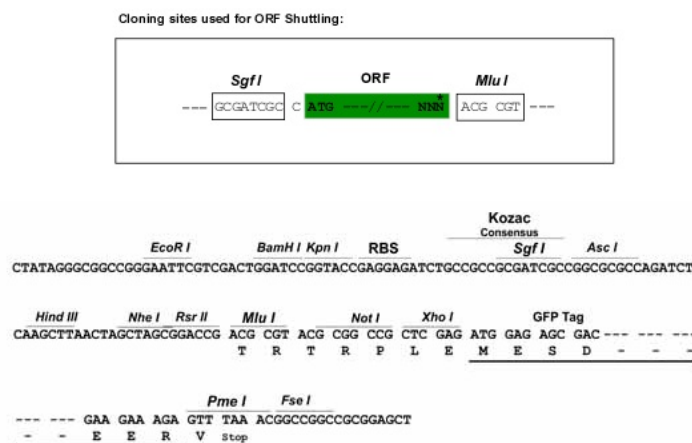
[View online »](#)

Protein Sequence: >Peptide sequence encoded by RG238413
Blue=ORF Red=Cloning site Green=Tag(s)

MTRRYNINIYAPTLLVFKEHINRPADV IQARGMKKQI IDDFITRNKYLLAARLTSQKLFHELCPVKRSH
 RQRKYCVLLTAETTKLSKPF AFLSFALANTQDTRFVHVYSNRQEFADTLLPDSEAFQKSAVSIL
 ERRNTAGR VVYKLTLEDPWIGSESDKFI LLGYLDQLRKDPALLSSEAVLPDLTDELAPVLLRWFYSASD
 YISDCWDSIFHNNWREMMPLLSLIF SALF ILFGTVIVQAFSDSNDERESSPPEKEEAQEKTKTEPSFT
 KENSSKIPKKGFEVTELT DVTYTSNLVRLRPGHMNVLLILSNSTKTSLLQKFALEVYTFGSSCLHFS
 FLSLDKHREWLEYLLEFQAAPIPNQYDKHFMERDYGTVLALNGHKYFCLFKPQKTVEEEEATGSC
 SDVSSSLYLGESRGKPSGLGSRPIKGLSKLSLWMERLLEGLRQFYIPSWPELD
TRTRPLEMESDEGLPAMEIECRITGTLNGVEFELVGGEGTPEQGRMTNKMSTKGALTFSPYLLSHV
MGYGFYHFGTYPSGYENPFLHAINNGGYNTRIEKYEDGGVLHVSFSYRYEAGRVIGDFKVMGTGFPED
SVIFTDKIIRSNATVEHLHPMGDNDL DGSFTRTFLRDGGYSSVVD SHMHFKSAIHPSILQNGGPMFA
FRRVEEDHSNTELGIVEYQHAFKTPDADAGEERV

Restriction Sites: SgfI-MluI

Cloning Scheme:



ACCN: NM_001287811

ORF Size: 1410 bp

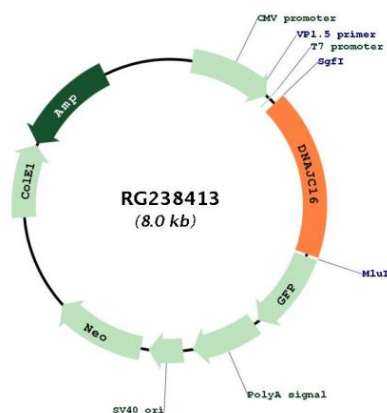
OTI Disclaimer: The molecular sequence of this clone aligns with the gene accession number as a point of reference only. However, individual transcript sequences of the same gene can differ through naturally occurring variations (e.g. polymorphisms), each with its own valid existence. This clone is substantially in agreement with the reference, but a complete review of all prevailing variants is recommended prior to use. [More info](#)

OTI Annotation: This clone was engineered to express the complete ORF with an expression tag. Expression varies depending on the nature of the gene.

Components: The ORF clone is ion-exchange column purified and shipped in a 2D barcoded Matrix tube containing 10ug of transfection-ready, dried plasmid DNA (reconstitute with 100 ul of water).

RefSeq: [NM_001287811.1](#), [NP_001274740.1](#)

RefSeq Size: 5893 bp
 RefSeq ORF: 1413 bp
 Locus ID: 23341
 UniProt ID: [Q9Y2G8](#)
 Cytogenetics: 1p36.21
 Protein Families: Druggable Genome, Transmembrane
 MW: 54.4 kDa

Product images:


Circular map for RG238413