

Product datasheet for **RG238398**

C3IP1 (KLHL12) (NM_001303109) Human Tagged ORF Clone

Product data:

Product Type:	Expression Plasmids
Product Name:	C3IP1 (KLHL12) (NM_001303109) Human Tagged ORF Clone
Tag:	TurboGFP
Symbol:	C3IP1
Synonyms:	C3IP1; DKIR
Mammalian Cell Selection:	Neomycin
Vector:	pCMV6-AC-GFP (PS100010)
E. coli Selection:	Ampicillin (100 ug/mL)
ORF Nucleotide Sequence:	>RG238398 representing NM_001303109. Blue=ORF Red=Cloning site Green=Tag(s)

```
GCTCGTTTGTAGTGAACCGTCAGAATTTTGTAAACGACTCACTATAGGGCGCCGGGAATTCGTCGACTG
GATCCGGTACCGAGGAGATCTGCCGCCCGCATCGCC
ATGGGAGGCATTATGGCCCCAAAGACATAATGACAAATACTCATGCTAAATCCATCCTCAATTCAATG
AACTCCCTCAGGAAGAGCAATACCCTCTGTGATGTGACATTGAGAGTAGAGCAGAAAGACTTCCCTGCC
CATCGGATTGTGCTGGCTGCCTGTAGTGATTACTTCTGTGCCATGTTCACTAGTGAGCTCTCAGAGAAG
GGGAAACCTTATGTTGACATCCAAGTTTGACTGCCTCTACCATGGAAATTTTATTGGACTTTGTGTAC
ACAGAAACAGTACATGTGACAGTGGAGAATGTACAAGAAGTCTTCTGCAGCCTGTCTGCTTCAGTTG
AAAGGTGTGAAACAAGCCTGCTGTGAGTCTTAGAAAGTCAGTTGGACCCTTCTAATTGCCTGGGTATT
AGGGATTTTGTGAAACCCACAATTGTGTTGACCTGATGCAAGCAGCTGAGGTTTTTAGCCAGAAGCAT
TTTCTGAAGTGGTACAGCATGAAGAGTTCATTCTTCTGAGTCAAGGAGAGGTGGAAAAGCTAATCAAG
TGCGACGAAATTCAGGTGGATTCTGAAGAGCCAGTCTTTGAGGCTGTCACTCAACTGGGTGAAGCATGCC
AAGAAAGAGCGGGAAGAATCCTTGCCCTAACCTGCTACAGTATGTGCGGATGCCCTACTAACCCCCAGG
TATATCACAGATGTAATAGATGCTGAGCCTTTCATCCGCTGTAGTTTACAATGCAGGGATCTGGTTGAT
GAAGCAAAGAAGTTTCATCTGAGGCCTGAACTTCGGAGTCAGATGCAGGGACCCAGGACAAGGGCTCGC
CTAGATATGATCTATGTCTCTGGAGCCTTTGATGGAAGCAGGCGTCACACCAGTATGGAGCGTATGATG
CCAAACATTGACCAGTGGAGCATGCTGGGAGATATGCAGACAGCCCGGGAAGTGCCGGACTCGTAGTG
GCCAGTGGAGTACTACTGTCTAGGAGGATATGACGGCTTGAATATCTTAAATTCAAGTTGAGAAAATAC
GACCCTCATACAGGACATTGGACTAATGTTACACCAATGGCCACCAAGCGTTCTGGTGCAGGAGTAGCC
CTGCTGAATGACCATATTTATGTGGTGGGGGATTTGATGGTACAGCCCACCTTTCTTCCGTTGAAGCA
TACAACATTTCGACTGATTCCTGGACAAGTGTACCCAGTATGACCACTCCACGATGCTATGTAGGGGCC
ACAGTCTTCGGGGGAGACTCTATGCAATTGCAGGATATGATGGTAAATCCCTGCTAAGTAGCATTGAA
TGTTATGACCCTATCATCGACAGCTGGGAAGTCGTGACATCCATGGGAACCCAGCGCTGTGATGCTGGT
GTTTGTGTTCTCCGCGAGAAG
ACGCGTACGCGGCCGCTCGAG - GFP Tag - GTTTAAAC
```

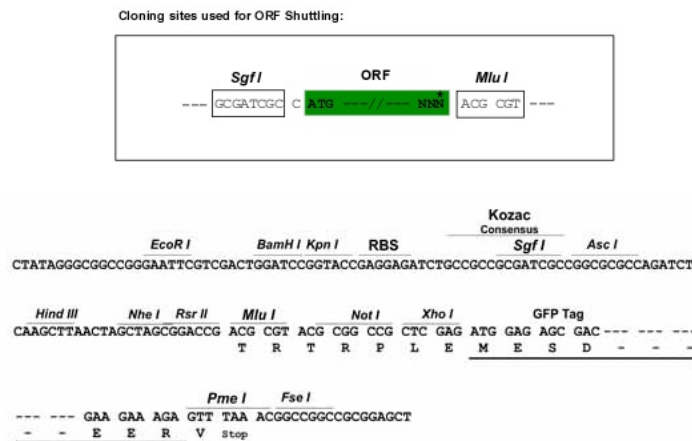


Protein Sequence: >Peptide sequence encoded by RG238398
 Blue=ORF Red=Cloning site Green=Tag(s)

MGGIMAPKDIMTNTHAKSILNSMNSLRKSNTLCDVTLRVEQKDFPAHRIVLAACSDYFCAMFTSELSEK
 GKPYVDIQGLTASTMEILLDFVYTETVHVTVENVQELLPAACLLQLKGVKQACCEFLSQLDPSNCLGI
 RDEAETHNCVDLMQAAEVFSQKHFPEVVQHEEFILLSQGEVEKLKICDEIQVDSEEPVFEAVINWVKHA
 KKEREESLPNLLQYVRMPLLTTPRYITDVIDAEPIRCSLQCRDLVDEAKKFHLRPELRSQMQRTRAR
 LDMIYVSGGFDGSRRTSMERYDPNIDQWSMLGDMQTAREGAGLVVASGVYIYCLGGYDGLNILNSVEKY
 DPHTGHWNTVPMATKRSGAGVALLNDHIYVVGFDGTAHLSSVEAYNIRTDSTVTSMTTPRCYVGA
 TVLRGRLYAIAGYDGNLSLSSIECYDPIIDSWEVVTSMGTQRCDAGVCLREK
TRTRPLEMESDESGLPAMEIECRITGTLNGVEFELVGGEGTPEQGRMTNKMSTKGALTFSPYLLSHV
 MGYGFYHFGTYPSGYENPFLHAINNGGYNTRIEKYEDGGVLHVSFSYRYEAGRVIGDFKVMGTGFPED
 SVIFTDKIIRSNATVEHLHPMGDNDLDGSFTRTFLRDGGYSSVVDSHMHFKSAIHPSILQNGGPMFA
 FRRVEEDHSNTELGIVEYQHAFKTPDADAGEERV

Restriction Sites: SgfI-MluI

Cloning Scheme:



ACCN: NM_001303109

ORF Size: 1401 bp

OTI Disclaimer: The molecular sequence of this clone aligns with the gene accession number as a point of reference only. However, individual transcript sequences of the same gene can differ through naturally occurring variations (e.g. polymorphisms), each with its own valid existence. This clone is substantially in agreement with the reference, but a complete review of all prevailing variants is recommended prior to use. [More info](#)

OTI Annotation: This clone was engineered to express the complete ORF with an expression tag. Expression varies depending on the nature of the gene.

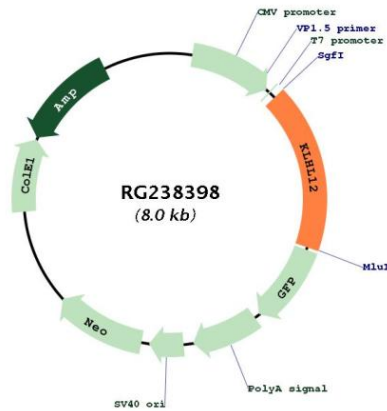
Components: The ORF clone is ion-exchange column purified and shipped in a 2D barcoded Matrix tube containing 10ug of transfection-ready, dried plasmid DNA (reconstitute with 100 ul of water).

RefSeq: [NM_001303109.2](#)

RefSeq Size: 3081 bp
 RefSeq ORF: 1404 bp
 Locus ID: 59349
 UniProt ID: [Q53G59](#)
 Cytogenetics: 1q32.1
 MW: 52.6 kDa

Gene Summary: This gene encodes a member of the KLHL (Kelch-like) family of proteins. This protein has been identified as an autoantigen in the autoimmune disease Sjogren's syndrome and as a potential biomarker in primary biliary cirrhosis. This protein may act as a substrate adaptor of the Cullin-3 ubiquitin ligase complex to promote substrate-specific ubiquitylation. Ubiquitylation by this complex has been shown to regulate the Wnt signaling pathway as well as COPII vesicle coat size. A pseudogene has been identified on chromosome 22. Alternative splicing results in multiple transcript variants. [provided by RefSeq, Dec 2014]

Product images:



Circular map for RG238398