

Product datasheet for **RG238397**

PNLIPRP1 (NM_001303135) Human Tagged ORF Clone

Product data:

Product Type:	Expression Plasmids
Product Name:	PNLIPRP1 (NM_001303135) Human Tagged ORF Clone
Tag:	TurboGFP
Symbol:	PNLIPRP1
Synonyms:	PLRP1
Mammalian Cell Selection:	Neomycin
Vector:	pCMV6-AC-GFP (PS100010)
E. coli Selection:	Ampicillin (100 ug/mL)
ORF Nucleotide Sequence:	>RG238397 representing NM_001303135. Blue=ORF Red=Cloning site Green=Tag(s)

```
GCTCGTTTGTAGTAACCGTCAGAATTTTGTAAACGACTCACTATAGGGCGCCGGGAATTCGTCGACTG
GATCCGGTACCGAGGAGATCTGCCGCCCGCATCGCC
ATGCTGATCTTCTGGACAATCACACTTTTCTGCTGGGAGCAGCCAAAGGAAAAGAAGTTTGCTATGAG
GACCTCGGGTGTCTTTCTGACACTGAGCCCTGGGGCGGGACAGCAATCAGGCCCTGAAAATTCTCCCC
TGGAGCCCTGAGAAGATCGGCACCCGCTTCTGCTGTACACCAATGAAAACCCAAACAACTTCAAATT
CTCCTCCTCTGATCCATCAACAATTGAGGCATCAAATTTTCAAATGGACAGAAAGACCCGGTTTCATC
ATCCATGGCTTCATAGACAAAGGAGATGAGAGCTGGGTGACAGACATGTGCAAGAACTGTTGAGGTG
GAGGAGGTGAACATGCATCTGCGTGGACTGGAAGAAGGGCTCCCAAGCCACCTACACACAGGCTGCCAAC
AACGTGCGAGTGGTGGGGCCCAAGTGGCCAGATGCTCGACATCCTCTTGACAGAGTATAGCTACCCC
CCTTCAAAGTTCACCTCATTGGCCACAGCCTGGGAGCCACGTGGCTGGAGAGGCAGGAAGCAAGACT
CCAGGCCCTGAGCAGGATTACAGGGTTGGATCCTGTAGAAGCAAGTTTCGAGAGTACTCCTGAAGAGGTG
CGACTTGATCCCTCTGATGCTGACTTTGTTGATGTGATTACACCGGATGCAGCTCCCCTGATCCCATT
TTGGGTTTTGGAACGAACCAACAGATGGGTCTCTGACTTCTTCCCAATGGAGGAGAGAGCATGCCG
GGATGCAAGAAGAATGCCTGTCTCAGATCGTGGATCTAGATGGCATCTGGGCGGAAACCCGGGACTTT
GTGGCTTGCAATCACCTAAGAAGCTACAAGTCTTTGAGTCTGACAAGTCTTCCCGTGTCCAGATCAAGGATG
GCATATCCCTGCACTTCTACAAGTCTTTGAGTCTGACAAGTCTTCCCGTGTCCAGATCAAGGATG
CCACAGATGGGTCACTATGCTGATAAATTTGCTGGCAGGACAAGTGAAGAGCAGCAGAAAATCTTCTTG
AACACAGGAGAGGCTAGCAATTTGCTCGCTGGAGATATGGGTTTTCCATCACACTGTCTGGAAGAACA
GCCACTGGTCAGATCAAAGTTGCTTTGTTTGGAAATAAGGGAAACACTCACAGTACAGTATCTTCAGG
GGGATTCTCAAACCAGGCTCAACCCATTCTATGAGTTTGTGCAAGCTGGATGTTGGAACAATTGAG
AAAGTCAAGTTTCTTTGGAATAACAATGTGATAAATCCAACCTCCCAAAGTGGGTGCCACCAAGATC
ACTGTGCAAAAGGGAGAAGAGAAGACAGTGTACAACCTTCTGTAGCGAAGACACAGTGCAGGGAAGACAG
CTGCTCACCTCACGCCCTGC
ACGCGTACGCGGCCGCTCGAG - GFP Tag - GTTTAAAC
```



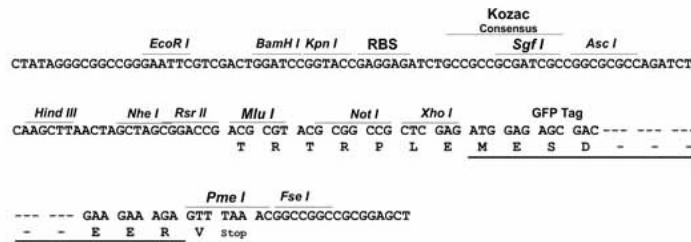
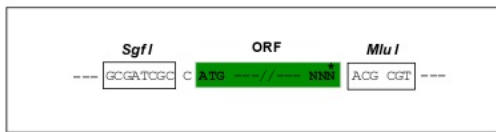
Protein Sequence: >Peptide sequence encoded by RG238397
 Blue=ORF Red=Cloning site Green=Tag(s)

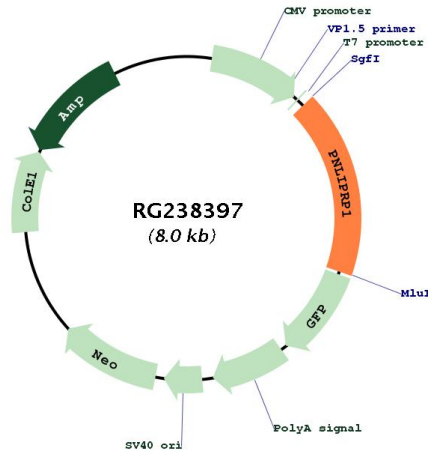
MLIFWTITL FLLGAAKGKEVCYEDLGCFSDTEPWGGTAIRPLKILPWSPEKIGTRFLLYTNENPNNFQI
 LLLSDPSTIEASNFQMDRKTRFIIHGFDKGDSEWVTD MCKKLFEEVEVNCICVDWKKGSQATYTQAN
 NVRVVGAAQVAQMLDILLTEYSYPPSKVHLIGHSLGAHVAGEAGSKTPGLSRITGLDPVEASFESTPEEV
 RLDPSDADFVDVIHTDAAPLIPFLGFGTNQQMGHLDFPNGGESMPGCKKNALSQIVDL DGIWAGTRDF
 VACNHLRSYKYLESILNPDGFAAYPCTSYKSFESDKCFPCPDQGCPQMGHYADKFAGRTSEEQQKFLL
 NTGEASNFARWRYGVSITLSGRATGQIKVALFGNKGNT HQYSIFRGILKPGSTHSYEFDAKLDVGTIE
 KYKFLWNNVINPTLPKVGATKITVQKGEEKTVYNFCSEDTVREDTLLTLTPC
TRTRPLEMESDESGLPAMEIECRITGTLNGVEFELVGGGEGTPEQGRMTNKMKSTKGALTFSPYLLSHV
 MGYGFYHFGTYP SGYENPFLHAINNGGYNTRIEKYEDGGVLHVSFSYRYEAGRVIGDFKVMGTGFPED
 SVIFTDKIIRSNATVEHLHPMGDNDLDGSFTRTFLRDGGYSSVVD SHMHFKSAIHPSILQNGGPMFA
 FRRVEEDHSNTELGIVEYQHAFKTPDADAGEERV

Restriction Sites: SgfI-MluI

Cloning Scheme:

Cloning sites used for ORF Shutting:



Plasmid Map:


ACCN:	NM_001303135
ORF Size:	1401 bp
OTI Disclaimer:	The molecular sequence of this clone aligns with the gene accession number as a point of reference only. However, individual transcript sequences of the same gene can differ through naturally occurring variations (e.g. polymorphisms), each with its own valid existence. This clone is substantially in agreement with the reference, but a complete review of all prevailing variants is recommended prior to use. More info
OTI Annotation:	This clone was engineered to express the complete ORF with an expression tag. Expression varies depending on the nature of the gene.
Components:	The ORF clone is ion-exchange column purified and shipped in a 2D barcoded Matrix tube containing 10ug of transfection-ready, dried plasmid DNA (reconstitute with 100 ul of water).
RefSeq:	NM_001303135.1 , NP_001290064.1
RefSeq Size:	1513 bp
RefSeq ORF:	1404 bp
Locus ID:	5407
UniProt ID:	P54315
Cytogenetics:	10q25.3
Protein Families:	Druggable Genome, Secreted Protein
Protein Pathways:	Glycerolipid metabolism, Metabolic pathways
MW:	52.3 kDa
Gene Summary:	May function as inhibitor of dietary triglyceride digestion. Lacks detectable lipase activity towards triglycerides, diglycerides, phosphatidylcholine, galactolipids or cholesterol esters (in vitro) (By similarity).[UniProtKB/Swiss-Prot Function]