

## Product datasheet for **RG238393**

### PRMT5 (NM\_001282956) Human Tagged ORF Clone

#### Product data:

Product Type:	Expression Plasmids
Product Name:	PRMT5 (NM_001282956) Human Tagged ORF Clone
Tag:	TurboGFP
Symbol:	PRMT5
Synonyms:	HRMT1L5; HSL7; IBP72; JBP1; SKB1; SKB1Hs
Mammalian Cell Selection:	Neomycin
Vector:	pCMV6-AC-GFP (PS100010)
E. coli Selection:	Ampicillin (100 ug/mL)
ORF Nucleotide Sequence:	>RG238393 representing NM_001282956. Blue=ORF Red=Cloning site Green=Tag(s)

```
GCTCGTTTGTAGTGAACCGTCAGAATTTGTAAACGACTACTATAGGGCGCCGGGAATTCGTCGACTG
GATCCGGTACCGAGGAGATCTGCCGCCGCGATCGCC
ATGCGGGTCCGAACCGGGGACGGAGAAGGGCAGACTAGTCATCCCGGAGAAGCAGGGGTTTGATTTTC
CTCTGCATGCCTGTCTTCCATCCCGTTTCAAGAGGGAGTTCAATCAGGAACCTGCTAAGAATCGGCC
GGTCCCCAGACACGATCAGACCTACTGCTGTGAGGAAGGACTGGAATACGCTAATTGTGGGAAAGCTT
TCTCCATGGATTCGTCAGACTCAAAGTGGAGAAGATTTCGAGGAACCTCCGAGGCGTTGGAGGTGCAG
TTCATCATCACAGGCACCAACCACCACTCAGAGAAGGAGTTCTGCTCCTACCTCCAATACCTGGAATAC
TTAAGCCAGAACCGTCTCCACCTAATGCCTATGAACTTTTCCAAAGGGCTATGAAGACTATCTGCAG
TCCCCGCTTCAGCCACTGATGGACAATCTGGAATCTCAGACATATGAAGTGTGAAAAGGACCCCATC
AAATACTCTCAGTACCAGCAGGCCATCTATAAATGTCTGTAGACCGAGTACCAGAAGAGGAGAAGGAT
ACCAATGTCCAGGTACTGATGGTGTGGGAGCAGGACGGGGACCCCTGGTGAACGCTTCCCTGCGGGCA
GCCAAGCAGGCCGACCGCGGATAAAGCTGTATGCTGTGGAGAAAAACCAATGCCGTGGTGACGCTA
GAGAACTGGCAGTTTGAAGAATGGGGAAGCAAGTGACCGTAGTCTCATCAGACATGAGGGAATGGGTG
GCTCCAGAGAAAGCAGACATCATTGTGAGTGTGAGCTTCTGGGCTCATTGCTGACAATGAATTGTCGCT
GAGTGCCTGGATGGAGCCAGCACTTCTAAAAGATGATGGTGTGAGCATCCCCGGGAGTACACTTCC
TTTCTGGCTCCCATCTCTTCCCAAGCTGTACAATGAGGTCGAGCCTGTAGGGAGAAGGACCGTGAC
CCTGAGGCCAGTTTGAAGTGCCTTATGTGGTACGGCTGCACAACCTCCACCAGCTCTCGACCCAG
CCCTGTTTACCTTCAGCCATCCCAACAGAGATCCTATGATTGACAACAACCGCTATTGCACCTTGAA
TTTCTGTGGAGGTGAACACAGTACTACATGGCTTTGCCGGTACTTTGAGACTGTCTTTATCAGGAC
ATCACTCTGAGTATCCGTCCAGAGACTCACTCTCTGGGATGTTCTCATGGTTTCCCATCTCTTCCCT
ATTAAGCAGCCATAACGGTACGTGAAGGCCAAACCATCTGTGTGCGTTTCTGGCGATGCAGCAATTCC
AAGAAGGTGTGGTATGAGTGGGCTGTGACAGCACCAGTCTGTTCTGCTATTACATAACCCACAGGCCG
TCATATACCATTGGCCTC
ACGCGTACGCGGCCGCTCGAG - GFP Tag - GTTTAAAC
```



[View online »](#)

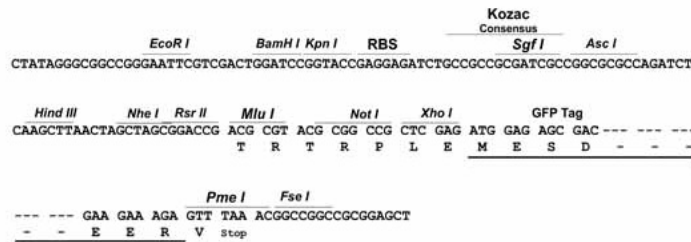
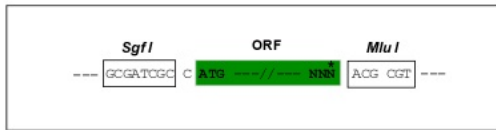
Protein Sequence: >Peptide sequence encoded by RG238393  
 Blue=ORF Red=Cloning site Green=Tag(s)

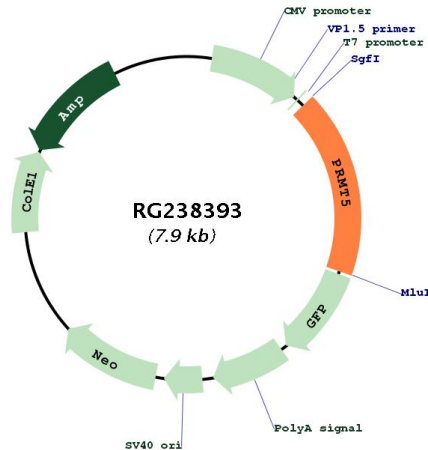
MRGPNSTGTEKGRLLVIPEKQGFDFLCMPVFHPRFKREFIQEPAKNRPGPQTRSDLLLSGRDWNTLIVGKL  
 SPWIRPDSKVEKIRRNSEALEVQFIITGTNHHSEKEFCSYLQYLEYLSQNRPPNAYELFAKGYEDYLQ  
 SPLQPLMDNLESQTYEVFEKDPKYSQYQAIYKCLLDRVPEEEKDTNVQVLMVLGAGRGPLVNASLRA  
 AKQADRRIKLYAVEKNPNAVVTLENWQFEWGSQVTVVSSDMREWVAPEKADIIVSELLGSFADNELSP  
 ECLDGAQHFLKDDGVSIPGEYTSFLAPISSSKLYNEVRACREKDRDPEAQFEMPVYVRLHNFHQLSAPQ  
 PCFTFSHPNRDPMIDNNRYCTLEFPVEVNTVLHGFAFYFETVL YQDITLSIRPETHSPGMFSWFPILFP  
 IKQPITVREGQITCVRFWRCSNSKKVWYEWAVTAPVCSAIHNPTGRSYTIGL  
 TRTRPLEMESDESGLPAMEIECRITGTLNGVEFELVGGEGTPEQGRMTNKMKSTKGALTFSPYLLSHV  
 MGYGFYHFGTYPSGYENPFLHAINNGGYNTRIEKYEDGGVLHVSFSYRYEAGRVIGDFKVMGTGFPED  
 SVIFTDKIIRSNATVEHLHPMGDNDLDGSFTRTFSLRDGGYSSVVD SHMHFKSAIHPSILQNGGPMFA  
 FRRVEEDHSNTELGIVEYQHAFKTPDADAGEERV

Restriction Sites: SgfI-MluI

Cloning Scheme:

Cloning sites used for ORF Shutting:



**Plasmid Map:**


<b>ACCN:</b>	NM_001282956
<b>ORF Size:</b>	1398 bp
<b>OTI Disclaimer:</b>	The molecular sequence of this clone aligns with the gene accession number as a point of reference only. However, individual transcript sequences of the same gene can differ through naturally occurring variations (e.g. polymorphisms), each with its own valid existence. This clone is substantially in agreement with the reference, but a complete review of all prevailing variants is recommended prior to use. <a href="#">More info</a>
<b>OTI Annotation:</b>	This clone was engineered to express the complete ORF with an expression tag. Expression varies depending on the nature of the gene.
<b>Components:</b>	The ORF clone is ion-exchange column purified and shipped in a 2D barcoded Matrix tube containing 10ug of transfection-ready, dried plasmid DNA (reconstitute with 100 ul of water).
<b>RefSeq:</b>	<a href="#">NM_001282956.2</a>
<b>RefSeq Size:</b>	2164 bp
<b>RefSeq ORF:</b>	1401 bp
<b>Locus ID:</b>	10419
<b>UniProt ID:</b>	<a href="#">O14744</a>
<b>Cytogenetics:</b>	14q11.2
<b>Protein Families:</b>	Stem cell - Pluripotency
<b>MW:</b>	54 kDa

**Gene Summary:**

This gene encodes an enzyme that belongs to the methyltransferase family. The encoded protein catalyzes the transfer of methyl groups to the amino acid arginine, in target proteins that include histones, transcriptional elongation factors and the tumor suppressor p53. This gene plays a role in several cellular processes, including transcriptional regulation, and the assembly of small nuclear ribonucleoproteins. A pseudogene of this gene has been defined on chromosome 4. Alternative splicing results in multiple transcript variants encoding different isoforms. [provided by RefSeq, Sep 2015]