

Product datasheet for **RG238392**

ZNF595 (NM_001286054) Human Tagged ORF Clone

Product data:

Product Type:	Expression Plasmids
Product Name:	ZNF595 (NM_001286054) Human Tagged ORF Clone
Tag:	TurboGFP
Symbol:	ZNF595
Mammalian Cell Selection:	Neomycin
Vector:	pCMV6-AC-GFP (PS100010)
E. coli Selection:	Ampicillin (100 ug/mL)
ORF Nucleotide Sequence:	>RG238392 representing NM_001286054. Blue=ORF Red=Cloning site Green=Tag(s)

```
GCTCGTTTAGTGAACCGTCAGAATTTGTAAACGACTCACTATAGGGCGGCCGGGAATTCGTCGACTG
GATCCGGTACCGAGGAGATCTGCCGCCGCGATCGCC
ATGTCACACCTAACTCAACATACAGGAATTCATGCTGGAGAGAAACCTACAAATGTGAAAAATGTGGC
AAAGCCTTTAATAGGTCCACATCACTTAGTAAACATAAGAGAATTCATACTGGAGAGAAACCTACACA
TGTGAAGAATGTGGCAAAGCCTTTAGACGGTCCACAGTCTGAACGAACATAAGAAAATTCATACTGGA
GAGAAACCTACAAATGTGAAGAATGTGGCAAAGCCTTTACAAGGTCCACAACACTGAATGAACACAAG
AAAATTCATACTGGAGAGAAACCTACAAATGTAAGAATGTGGCAAAGCCTTTAGATGGTCCACAAGC
CTGAATGAACATAAGAATATTCATACTGGAGAGAAACCTACAAATGTAAGAATGTGGCAAAGCCTTT
AGACAGTCCAGGAGCCTGAATGAACATAAAAAATTCATACTGGCGAAAAACCTACACATGTGAAAAA
TGTGGCAAAGCTTTAAACCAATCCTCAAGTCTTATTATACACAGGAGCATTTCATTCTGAACAAAACTT
TACAAATGTGAAGAATGTGGCAAAGCCTTTACTTGGTCTCATCCCTTAATAAACATAAGAGAATTCAT
ACTGGAGAGAAACCTACACATGTGAAGAATGTGGCAAAGCTTTTATAGGTCTCACACCTTGCTAAA
CATAAGAGAATTCATACTGGAGAGAAACCTACACGTGCGAAGAATGTGGCAAAGCTTTTAAACCAATCC
TCAACTCTTATATTACACAAGAGAATCCATTCTGGGCAAAAACCTTACAAATGTGAAGAATGTGGCAAA
GCCTTTACACGGTCCACAACACTGAACGAACATAAGAAAATTCATACTGGCGAGAAACCTACAAATGT
GAAGAATGTGGCAAAGCTTTTATGGTCCGCAAGCCTGAATGAACATAAGAATATTCATACTGGAGAG
AAACCTACAAATGTAAAGAATGTGGCAAAGCTTTTAAACCAATCCTCAGGCCTTATTATACACAGGAGC
ATTCATTTCTGAACAAAACTTTACAAATGTGAAGAATGTGGCAAAGCCTTTACTCGGTCCACAGCCCTG
AATGAACATAAGAAAATTCATTCTGGAGAGAAACCTACAAATGCAAAGAATGTGGCAAAGCCTATAAC
TTATCCTCAACCTTACTAAACATAAGAGAATTCATACTGGAGAGAAACCTTCACATGTGAAGAATGT
GGCAAAGCCTTCAATGGTCTCATCCCTTACTAAACATAAGATAATTCATACTGGAGAGAAATCCTAC
AAATGTGAAGAATGTGGCAAAGCTTTTAAATCGGCCCTCAACCTTACTGTACACAAGCGAATTCATACT
GGCAAGGAACATAGT
ACGCGTACGCGGCCGCTCGAG - GFP Tag - GTTTAAAC
```



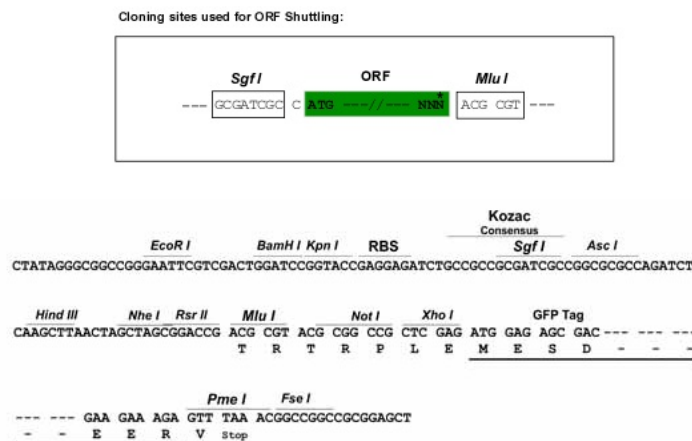
[View online >](#)

Protein Sequence: >Peptide sequence encoded by RG238392
 Blue=ORF Red=Cloning site Green=Tag(s)

MSHLTQHTGIHAGEKPYKCEKCGKAFNRSTLSKHKRIHTGEKPYTCEECGKAFRRSTVLNEHKKIHTG
 EKPYKCEECGKAFTRSTTLNEHKKIHTGEKPYKCEKCGKAFRWSTSLNEHKNIHTGEKPYKCEKCGKAF
 RQSRSLNEHKNIHTGEKPYTCEKCGKAFNQSSSLIIHRSIHSEQKLYKCEECGKAFWSSSLNKHKRIH
 TGEKPYTCEECGKAFYRSSHAKHKRIHTGEKPYTCEECGKAFNQSSSTLILHKRIHSGQKPYKCEECGK
 AFTRSTTLNEHKKIHTGEKPYKCEECGKAFIWSASLNEHKNIHTGEKPYKCEKCGKAFNQSSGLIIHRS
 IHSEQKLYKCEECGKAFTRSTALNEHKKIHSGEKPYKCEKCGKAYNLSSTLTKHKRIHTGEKPFTEEC
 GKAFNWSSSLTKHKIHTGEKSYKCEECGKAFNRPSTLTVHKRIHTGKEHS
 TRTRPLEMESDESGLPAMEIECRITGTLNGVEFELVGGEGTPEQGRMTNKMSTKGALTFSPYLLSHV
 MGYGFYHFGTYPSGYENPFLHAINNGGYNTRIEKYEDGGVLHVSFSYRYEAGRVIGDFKVMGTGFPED
 SVIFTDKIIIRSNATVEHLHPMGDNDLDGSFTRTFSLRDGGYSSVVDSHMHFKSAIHPSILQNGGPMFA
 FRRVEEDHSNTELGIVEYQHAFKTPDADAGEERV

Restriction Sites: SgfI-MluI

Cloning Scheme:



ACCN: NM_001286054

ORF Size: 1395 bp

OTI Disclaimer: The molecular sequence of this clone aligns with the gene accession number as a point of reference only. However, individual transcript sequences of the same gene can differ through naturally occurring variations (e.g. polymorphisms), each with its own valid existence. This clone is substantially in agreement with the reference, but a complete review of all prevailing variants is recommended prior to use. [More info](#)

OTI Annotation: This clone was engineered to express the complete ORF with an expression tag. Expression varies depending on the nature of the gene.

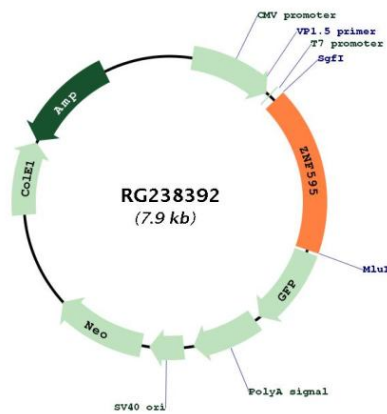
Components: The ORF clone is ion-exchange column purified and shipped in a 2D barcoded Matrix tube containing 10ug of transfection-ready, dried plasmid DNA (reconstitute with 100 ul of water).

RefSeq: [NM_001286054.1](#), [NP_001272983.1](#)

RefSeq Size: 3012 bp
 RefSeq ORF: 1398 bp
 Locus ID: 152687
 UniProt ID: [Q8IYB9](#)
 Cytogenetics: 4p16.3
 Protein Families: Transcription Factors
 MW: 53.8 kDa

Gene Summary: This gene encodes a protein belonging to the Cys2His2 zinc finger protein family, whose members function as transcription factors that can regulate a broad variety of developmental and cellular processes. Alternative splicing of this gene results in multiple transcript variants. [provided by RefSeq, Oct 2013]

Product images:



Circular map for RG238392