

## Product datasheet for **RG238389**

### CELF3 (NM\_001291106) Human Tagged ORF Clone

#### Product data:

|                           |  |
|---------------------------|--|
| Product Type:             | Expression Plasmids  |
| Product Name:             | CELF3 (NM_001291106) Human Tagged ORF Clone                                    |
| Tag:                      | TurboGFP   |
| Symbol:                   | CELF3  |
| Synonyms:                 | BRUNOL1; CAGH4; ERDA4; ETR-1; TNRC4  |
| Mammalian Cell Selection: | Neomycin   |
| Vector:                   | pCMV6-AC-GFP (PS100010)  |
| E. coli Selection:        | Ampicillin (100 ug/mL)   |
| ORF Nucleotide Sequence:  | >RG238389 representing NM_001291106.<br>Blue=ORF Red=Cloning site Green=Tag(s) |

```
GCTCGTTTGTAGTGAACCGTCAGAATTTGTAAATACGACTCACTATAGGGCGCCGGGAATTCGTCGACTG
GATCCGGTACCGAGGAGATCTGCCGCCGCGATCGCC
ATGAAGGAGCCGGATGCCATCAAGCTGTTTGTGGGGCAGATCCCGAGGCATCTGGAGGAGAAGGACCTG
AAGCCCATCTTCGAACAGTTTGGTCGGATCTTTGAGCTGACTGTCATCAAGGACAAGTACACCGGGCTG
CACAAGGGATGTGCCTTCTGACATACTGTGCCGGGATTCAGCCCTGAAGGCCAGAGCGCCCTGCAC
GAACAGAAAGACGCTTCCAGGGATGAACAGGCCGATCCAGGTCAAGCCAGCCGACAGCGAGAGCCGAGGA
GAAGACCCGAAGCTCTTTGTGGGATGCTAGGGAAGCAGCAGACAGATGAGGACGTCGGGAAGATGTTT
GAGCCCTTCGGGACCATCGACGAGTGCCTGTGCTCCGGGGCCAGATGGCACCAGCAAAGGCTGCGCC
TTCGTGAAGTTCCAGACCCAGCTGAGGCCAGCGGCCATCAACACCCTTCACAGCAGCCGGACCCCTG
CCAGGTGCCTCGTCCAGCCTGGTGGTGAAGTTTGTGACTGAGAAAGGAGCGAGGTCTCCGCCGCATG
CAGCAGGTGGCCACCCAGTTGGGCATGTTAGCCCATCGCCCTCCAGTTTGGAGCCTACAGCGCCTAC
ACCCAGGCCCTGATGCAGCAGCAGCGGCCCTGGTAGCGGCTCACAGTGCCTACCTAGCCCATGGCC
ACCATGGCTGCCGTGCAGATGCAGCACATGGCTGCCATCAATGCCAATGGCCTCATCGCCACCCCATC
ACCCCATCCTCAGGAACCAGCACCCCTCCTGCCATCGTCCAGCCCTGTCTCGCCATTCGGCTGCC
CTGGGCGTCAACGGCTACAGCCCGGTGCCACCCAGCCACTGGGCAGCCTGCCCTGATGCTCTGTAT
CCCAACGGGGTTACCCCTACCCAGCCAGAGCCCGCGCCCGTGGACCCCTGCAGCAGGCCCTAC
CGGGGATGCAGCACTACACAGCCTACCCAGCAGCCTACAGCCTGGTTGCACCTGCGTTCCCGCAGCCT
CCAGCCCTGGTCCGCCAGCAGCCCCACCACCCTCAACAGCAGCAGCAGCAGCAGCAGCAACAG
CAGCAGCAGCAAAGAGAAGGCCCTGATGGCTGCAACATCTTATCTACCCTGCCCCAGGAGTTCACT
GACTCAGAGATCCTCCAGATGTTTGTCCCTTTGGCCAGTCATCTCAGCCAAAGTCTTTGTTGACCGA
GCCACCAATCAAAGCAAATGTTTTGGCTTTGTGAGTTTCGACAATCCGGCCAGTGCCAGGCTGCCATC
CAGGCCATGAATGGCTTCCAGATCGGCATGAAGCGCCTCAAAGTCCAGCTAAAGCGCCCTAAGGATGCC
AACCGGCCCTAC
ACGCGTACGCGGCCGCTCGAG - GFP Tag - GTTTAAAC
```



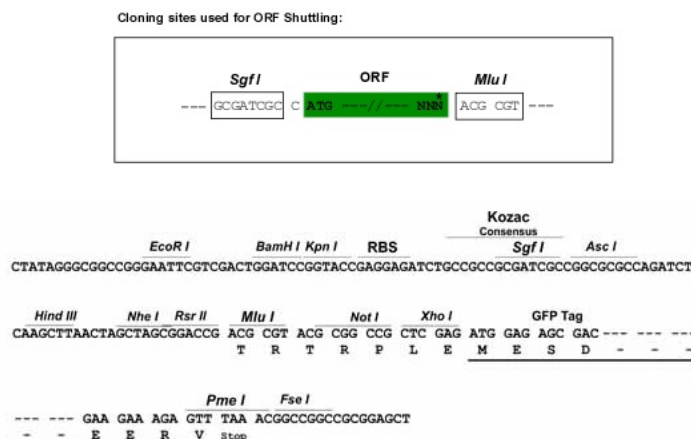
[View online >](#)

**Protein Sequence:** >Peptide sequence encoded by RG238389  
 Blue=ORF Red=Cloning site Green=Tag(s)

MKEPDAIKLVFGQIPRHLEEKDLKPIFEQFGRIFELTVIKDKYTGLHKGCAFLTYCARDSALKAQSALH  
 EQKTLPGMNRPIQVKPADSESRGEDRKL FVGM LGKQQTDEDVRKMFEPFGTIDECTVLRGPDGTSKGA  
 FVKFQTHAEAQA AINTLHSSRTLPGASSSLVVKFADTEKERLRRMQQVATQLGMFSPIALQFGAYSAY  
 TQALMQQAAL VAAHSAYLSPMATMAAVQMQHMAAINANGLIATPITPSSGTSTPPAIAATPVSAIPAA  
 LGVNGYSPVPTQPTGQPAPDALYPNGVHPYPAQSPAAPVDPLQQAYAGMQHYTAYPAAAYSLVAPAFPQP  
 PALVAQQPPPPPPQQQQQQQQQQQQREGPDGCNIFIYHLPQEFDTSEILQMFVPFGHVISAQVFVDR  
 ATNQSKCFGFVSFDNPASAAQAAIQAMNGFQIGMKRLKVQLKRPKDANRPY  
 TRTRPLEMESDESGLPAMEIECRITGTLNGVEFELVGGEGTPEQGRMTNKMSTKGALTFSPYLLSHV  
 MGYGFYHFGTYPSGYENPFLHAINNGGYNTRIEKYEDGGVLHVSFSYRYEAGRVIGDFKVMGTGFPED  
 SVIFTDKIIRSNATVEHLHPMGDNDLDGSFTRTFLRDGGYSSVVD SHMHFKSAIHPSILQNGGPMFA  
 FRRVEEDHSNTELGIVEYQHAFKTPDADAGEERV

**Restriction Sites:** SgfI-MluI

**Cloning Scheme:**



**ACCN:** NM\_001291106

**ORF Size:** 1392 bp

**OTI Disclaimer:** The molecular sequence of this clone aligns with the gene accession number as a point of reference only. However, individual transcript sequences of the same gene can differ through naturally occurring variations (e.g. polymorphisms), each with its own valid existence. This clone is substantially in agreement with the reference, but a complete review of all prevailing variants is recommended prior to use. [More info](#)

**OTI Annotation:** This clone was engineered to express the complete ORF with an expression tag. Expression varies depending on the nature of the gene.

**Components:** The ORF clone is ion-exchange column purified and shipped in a 2D barcoded Matrix tube containing 10ug of transfection-ready, dried plasmid DNA (reconstitute with 100 ul of water).

**RefSeq:** [NM\\_001291106.2](#)

RefSeq Size: 5612 bp

RefSeq ORF: 1395 bp

Locus ID: 11189

UniProt ID: [Q5SZQ8](#)

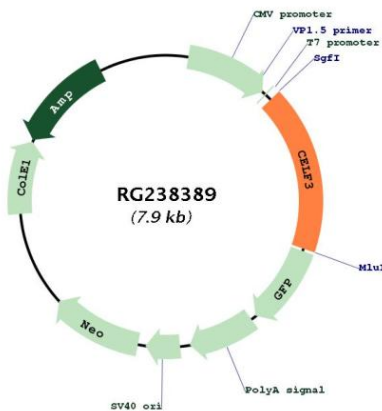
Cytogenetics: 1q21.3

Protein Families: Transcription Factors

MW: 50.9 kDa

**Gene Summary:** Members of the CELF/BRUNOL protein family contain two N-terminal RNA recognition motif (RRM) domains, one C-terminal RRM domain, and a divergent segment of 160-230 aa between the second and third RRM domains. Members of this protein family regulate pre-mRNA alternative splicing and may also be involved in mRNA editing, and translation. Multiple alternatively spliced transcript variants encoding different isoforms have been identified in this gene. [provided by RefSeq, Feb 2010]

**Product images:**



Circular map for RG238389