

Product datasheet for **RG238386**

beta V Tubulin (TUBB) (NM_001293212) Human Tagged ORF Clone

Product data:

Product Type:	Expression Plasmids
Product Name:	beta V Tubulin (TUBB) (NM_001293212) Human Tagged ORF Clone
Tag:	TurboGFP
Symbol:	TUBB
Synonyms:	CDCBM6; CSCSC1; M40; OK/SW-cl.56; TUBB1; TUBB5
Mammalian Cell Selection:	Neomycin
Vector:	pCMV6-AC-GFP (PS100010)
E. coli Selection:	Ampicillin (100 ug/mL)
ORF Nucleotide Sequence:	>RG238386 representing NM_001293212. Blue=ORF Red=Cloning site Green=Tag(s)

```
GCTCGTTTAGTGAACCGTCAGAATTTTGTAAACGACTCACTATAGGGCGCCGGGAATTCGTCGACTG
GATCCGGTACCGAGGAGATCTGCCGCCGCGATCGCC
ATGGGAGATGTGGGGCCGAGGTGGGCGAATTGGGATCCCTCCAGGTCAGGGGTTTCGAGACCATCCTGGG
CAACAAAGCGAGACCCTCCCCATGCCACGTTTCTACAAAAAATAAAATTCGGGAGGTGATCAGTGAT
GAACATGGCATCGACCCACCGGCACCTACCACGGGGACAGCGACCTGCAGCTGGACCGCATCTCTGTG
TACTACAATGAAGCCACAGGTGGCAAATATGTTCTCTGCCATCCTGGTGGATCTAGAACCTGGGACC
ATGGACTCTGTTGCTCAGGTCCTTTGGCCAGATCTTTAGACCAGACAACCTTTGATTTGGTCAGTCT
GGGGCAGGTAACAACTGGGCCAAAGGCCACTACACAGAGGGCGCCGAGCTGGTTGATTCTGTCCTGGAT
GTGGTACGGAAGGAGGCAGAGAGCTGTGACTGCCTGCAGGGCTTCCAGCTGACCCACTCACTGGGCGGG
GGCACAGGCTCTGGAATGGGCACTCTCCTTATCAGCAAGATCCGAGAAGAATACCCTGATCGCATCATG
AATACCTTCAGTGTGGTGCCTTCACCCAAAGTGTCTGACACCGTGGTCGAGCCCTACAATGCCACCCCTC
TCCGTCCATCAGTTGGTAGAGAACTGATGAGACCTATTGCATTGACAACGAGGCCCTCTATGATATC
TGCTTCCGCACTCTGAAGCTGACCACACCAACCTACGGGGATCTGAACCACCTTGTCTCAGCCACCATG
AGTGGTGTACCCACCTGCCTCCGTTTCCCTGGCCAGCTCAATGCTGACCTCCGCAAGTTGGCAGTCAAC
ATGGTCCCCTTCCCACGTCCTCATTCTTTATGCCTGGCTTTGCCCTCTCACCAGCCGTGGAAGCCAG
CAGTATCGAGCTCTCACAGTGCCGGAATCACCAGCAGGTTTCGATGCCAAGAACATGATGGCTGCC
TGTGACCCCGCCACGGCCGATACCTCACCGTGGCTGCTGTCTTCCGTGGTCCGATGTCCATGAAGGAG
GTCGATGAGCAGATGCTTAACGTGCAGAACAAGAAGCAGCAGCTACTTTGTGGAATGGATCCCAACAAT
GTCAAGACAGCCGTCTGTGACATCCACCTCGTGGCCTCAAGTGGCAGTCACCTTCATTGGCAATAGC
ACAGCCATCCAGGAGCTCTTCAAGCGCATCTCGGAGCAGTTCACTGCCATGTTCCGCCGGAAGGCCCTTC
CTCCACTGGTACACAGGCGAGGGCATGGACGAGATGGAGTTCACCGAGGCTGAGAGCAACATGAACGAC
CTCGTCTGAGTATCAGCAGTACCAGGATGCCACCGCAGAAGAGGAGGAGATTTCGGTGGAGGAGGCC
GAAGAGGAGGCC
ACGCGTACGCGGCCGCTCGAG - GFP Tag - GTTAAAC
```



View online »

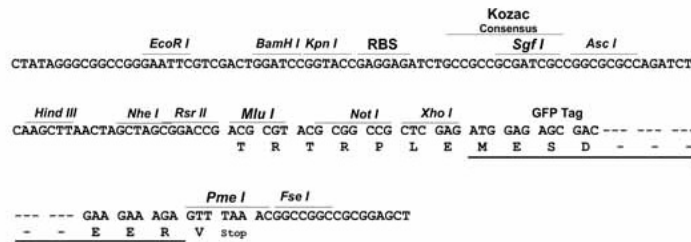
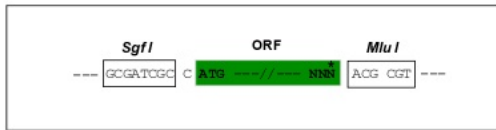
Protein Sequence: >Peptide sequence encoded by RG238386
 Blue=ORF Red=Cloning site Green=Tag(s)

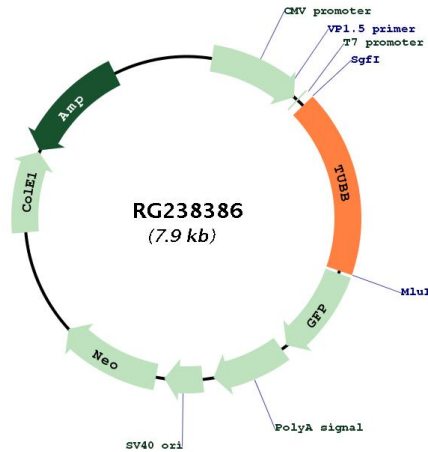
MGDVGPRWANWDPSSRSGVRDHPGQQSETLPHATFLQKIKFWEVISDEHGIDPTGTYHGSDQLDRISV
 YYNEATGGKYVPRAILVDLEPGTMDSVRSQPFQIFRPDNFVFGQSGAGNNWAKGHYTEGAELVDSVLD
 VVRKEAESCDCLQGFQLTHSLGGTGSGMGTLLISKIREEYPDRIMNTFSVVPSPKVSQVSDTVVEPYNATL
 SVHQLVENTDETYCIDNEALYDICFRTLKLTTPTYGDLNHLVSATMSGVTTCLRFPGQLNADLRKLAVN
 MYPFRLHFMPGFAPLTSRGSQQYRALTYPELTQQVFDANKMMAACDPRHGRYLTVAAVFRGRMSMKE
 VDEQMLNVQNKSSYFVEWIPNNVKTAVCDIPRGLKMAVTFIGNSTAIQELFKRISEQFTAMFRKAF
 LHWYTGEGMDEMEFTEAESNMNDLVSEYQQYQDATAEEEEEDFGEEAEEEE
TRTRPLEMESDESGLPAMEIECRITGTLNGVEFELVGGEGTPEQGRMTNKMSTKGALTFSPYLLSHV
 MGYGFYHFGTYPGYPENPFLHAINNGGYNTRIEKYEDGGVLHVSFSYRYEAGRVIGDFKVMGTGFPED
 SVIFTDKIIRSNATVEHLHPMGDNDLDGSFTRTFLRDGGYSSVVDSHMHFKSAIHPSILQNGGPMFA
 FRRVEEDHSNTELGIVEYQHAFKTPDADAGEERV

Restriction Sites: SgfI-MluI

Cloning Scheme:

Cloning sites used for ORF Shutting:



Plasmid Map:


ACCN: NM_001293212

ORF Size: 1392 bp

OTI Disclaimer: The molecular sequence of this clone aligns with the gene accession number as a point of reference only. However, individual transcript sequences of the same gene can differ through naturally occurring variations (e.g. polymorphisms), each with its own valid existence. This clone is substantially in agreement with the reference, but a complete review of all prevailing variants is recommended prior to use. [More info](#)

OTI Annotation: This clone was engineered to express the complete ORF with an expression tag. Expression varies depending on the nature of the gene.

Components: The ORF clone is ion-exchange column purified and shipped in a 2D barcoded Matrix tube containing 10ug of transfection-ready, dried plasmid DNA (reconstitute with 100 ul of water).

RefSeq: [NM_001293212.2](#)

RefSeq Size: 2772 bp

RefSeq ORF: 1395 bp

Locus ID: 203068

UniProt ID: [P07437](#)

Cytogenetics: 6p21.33

Protein Families: Druggable Genome

Protein Pathways: Gap junction, Pathogenic Escherichia coli infection

MW: 52.5 kDa

Gene Summary:

This gene encodes a beta tubulin protein. This protein forms a dimer with alpha tubulin and acts as a structural component of microtubules. Mutations in this gene cause cortical dysplasia, complex, with other brain malformations 6. Alternative splicing results in multiple splice variants. There are multiple pseudogenes for this gene on chromosomes 1, 6, 7, 8, 9, and 13. [provided by RefSeq, Jun 2014]