

## Product datasheet for **RG238373**

### MAP3K19 (NM\_001018047) Human Tagged ORF Clone

#### Product data:

Product Type:	Expression Plasmids
Product Name:	MAP3K19 (NM_001018047) Human Tagged ORF Clone
Tag:	TurboGFP
Symbol:	MAP3K19
Synonyms:	RCK; YSK4
Mammalian Cell Selection:	Neomycin
Vector:	pCMV6-AC-GFP (PS100010)
E. coli Selection:	Ampicillin (100 ug/mL)
ORF Nucleotide Sequence:	>RG238373 representing NM_001018047. Blue=ORF Red=Cloning site Green=Tag(s)

```
GCTCGTTTGTGAAACCGTCAGAATTTTGTAAACGACTCACTATAGGGCGCCGGGAATTCGTCGACTG
GATCCGGTACCGAGGAGATCTGCCGCCCGCATCGCC
ATGAGTTCTATGCCAAAACAGAAAGACATGCTGAGTCATTGCTTGACATTTGTCATGATACAAACTCT
TCTCCAAGTATTTGATGACAGTTACCAAAAATCAAACATCATCTTGCAAAGCATCAGCAGAAGTGAG
GAGTTCGACCAAGATGGTACTGACGTCATTCCACTGGTTAATGAAGAAGAAGATCCCAGTGGTGGT
AGACAGGACTGGCAACCCAGGACAGAAGGTGTTGAGATCACTGTAACTTTTCAAGAGATGTCAGTCTT
CCCCAAGAAATGAGCCAAGAAGACTTAAAAGAAAAGAATCTGATAAACTCATCGCTTCAAGAATGGCA
CAAGCACATGCAGTTTCTCATCAAATGAAATAGAAACGGTGGAGCTCAGGAAAAAGAAGCTGACCATG
CGGCCCTTAGTTTTGCAAAAAGAGGAAAGTTCCAGGGAGCTCTGCAATGTGAACCTGGGCTTTTTGCTA
CCAAGATCTTGTTTGAAGTGAACATTTCCAAGTCTGTAACCAGAGAAGATGCTCCTCATTTTTCTGAAG
GAGCAGCAAAGAAAATCTGAAGAGTTTTTCGACCTCTCATATGAAGTACAGTGGCCGAAGCATCAAGAGG
CATAGTAGTGGGCTCAGGATATATGACAGGGAGGAGAAATTTCTCATCTCAAATGAAAAGAAGATATTT
TCTGAAAATAGTTTAAAGTCTGAAGAACCTATCCTATGGACCAAGGTAGATTTGCTCAAAGCACTGAAA
CATGTCAACATTGTGGCCTATTTGGGGACATGCTTGAAGAGAACACTGTGAGCATTTTCATGGAGTTT
GTTCTGGTGGCTCAATCTCTAGTATTATAAACCGTTTTGGGCCATTGCCTGAGATGGTGTCTGTAAA
TATACGAAACAAATACTCAAGGTGTTGCTTATCTCCATGAGAAGTGTGGTACATCGCGATATCAA
GAAATAATGTTATGCTCATGCCAACTGGAATAATAAAGCTGATTGACTTTGGCTGTGCCAGGCGTTTG
GCCTGGGACAGTTTAAATGGCACCCACAGTGACATGCTTAAGTCCATGCATGGGACTCCATATTGGATG
GCCCGAAGTCAATGAGTCTGGCTATGGACGGAAATCAGATATCTGGAGCATTGGTTGACTGTG
TTTGAGATGGCTACAGGGAAGCCTCCACTGGCTTCCATGGACAGGATGGCCGCCATGTTTTACATCGGA
GCACACCGAGGGCTGATGCCTCCTTTACCAGACCACTTCTCAGAAAATGCAGCAGACTTTGTGCCATG
TGCTGACCAGGGACCAGCATGAGCGACCTTCTGCTCTCCAGCTCCTGAAGCACTCCTTCTGGAGAGA
AGTCAC
ACGCGTACGCGGCCGCTCGAG - GFP Tag - GTTTAAAC
```



[View online »](#)

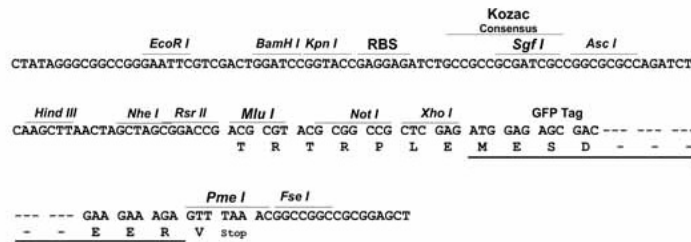
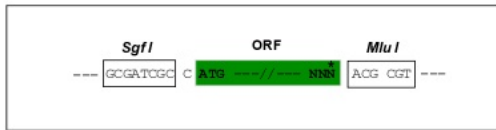
Protein Sequence: >Peptide sequence encoded by RG238373  
 Blue=ORF Red=Cloning site Green=Tag(s)

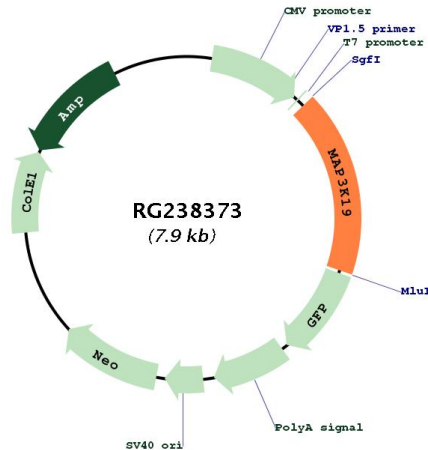
MSSMPKPERHAESLLDICHDTNSSPTDLMTVTKNQNIILQSI SRSEEFDQDGDGDCSHSTLVNEEDPSGG  
 RQDWQPRTEGVEITVTFPRDVSPPQEMSQEDLKEKNLINS LQEWAAH VSHPNIEIETVELRKKKLT M  
 RPLVLQKEESSREL CNVNLG FLLPRSCLELNISK SVTREDAPHFLKEQQRKSEEFSTSHMKYSGRSIKR  
 HSSGLRIYDREEKFLISNEKKIFSENSLKSEEPILWTKVDLLKALKHVNIVAYLGTCLQENTVSIFMEF  
 VPGGSISSIIINRFGPLPEMVFKYTKQILQGVAYLHENCV VHRDIKGNV VMLMPTGI IKLIDFGCARRL  
 AWAGLNGTHSDMLKSMHGTPYWMAPEVINESGYGRKSDIWSIGCTVFEMATGKPPPLASMDRMAAMFYIG  
 AHRGLMPPLPDHFSENAADFVRMCLTRDQHERPSALQLLKHSFLERSH  
 TRTRPLEMESDESGLPAMEIECRITGTLNGVEFELVGGGEGTPEQGRMTNKMKSTKGALTFSPYLLSHV  
 MGYGFYHFGTYP SGYENPFLHAINNGGYNTRIEKYEDGGVLHVSFSYRYEAGRVIGDFKVMGTGFPED  
 SVIFTDKIIRSNATVEHLHPMGDNDLDGSFTRTFSLRDGGYSSVVD SHMHFKSAIHPSILQNGGPMFA  
 FRRVEEDHSNTELGIVEYQHAFKTPDADAGEERV

Restriction Sites: SgfI-MluI

Cloning Scheme:

Cloning sites used for ORF Shutting:



**Plasmid Map:**


**ACCN:** NM\_001018047

**ORF Size:** 1386 bp

**OTI Disclaimer:** The molecular sequence of this clone aligns with the gene accession number as a point of reference only. However, individual transcript sequences of the same gene can differ through naturally occurring variations (e.g. polymorphisms), each with its own valid existence. This clone is substantially in agreement with the reference, but a complete review of all prevailing variants is recommended prior to use. [More info](#)

**OTI Annotation:** This clone was engineered to express the complete ORF with an expression tag. Expression varies depending on the nature of the gene.

**Components:** The ORF clone is ion-exchange column purified and shipped in a 2D barcoded Matrix tube containing 10ug of transfection-ready, dried plasmid DNA (reconstitute with 100 ul of water).

**RefSeq:** [NM\\_001018047.2](#), [NP\\_001018057.1](#)

**RefSeq Size:** 1789 bp

**RefSeq ORF:** 1389 bp

**Locus ID:** 80122

**UniProt ID:** [Q56UN5](#)

**Cytogenetics:** 2q21.3

**Protein Families:** Druggable Genome, Protein Kinase

**MW:** 53 kDa