

## Product datasheet for **RG238367**

### NFIL3 (NM\_001289999) Human Tagged ORF Clone

#### Product data:

Product Type:	Expression Plasmids
Product Name:	NFIL3 (NM_001289999) Human Tagged ORF Clone
Tag:	TurboGFP
Symbol:	NFIL3
Synonyms:	E4BP4; IL3BP1; NF-IL3A; NFIL3A
Mammalian Cell Selection:	Neomycin
Vector:	pCMV6-AC-GFP (PS100010)
E. coli Selection:	Ampicillin (100 ug/mL)
ORF Nucleotide Sequence:	>RG238367 representing NM_001289999. Blue=ORF Red=Cloning site Green=Tag(s)

```
GCTCGTTTGTAGTGAACCGTCAGAATTTGTAAACGACTCACTATAGGGCGCCGGGAATTCGTGACTG
GATCCGGTACCGAGGAGATCTGCCGCCGCGATCGCC
ATGCAGCTGAGAAAAATGCAGACCGTCAAAAAGGAGCAGGCGTCTCTTGATGCCAGTAGCAATGTGGAC
AAGATGATGGTCCTTAATTCTGCTTTAACGGAAGTGTGAGAAGACTCCACAACAGGTGAGGAGCTGCTT
CTCAGTGAAGGAAGTGTGGGAAGAACAATCTTCTGCATGTCGGAGGAAACGGGAATTCATTCTGAT
GAAAAGAAAGATGCTATGTATTGGGAAAAAGGCGAAAAATAATGAAGCTGCCAAAAGATCTCGTGAG
AAGCGTCGACTGAATGACCTGGTTTTAGAGAACAACAACTAATTGCACTGGGAGAAGAAAACGCCACTTTA
AAAGCTGAGCTGCTTTCCTAAAATTAAGTTTGGTTTAATTAGCTCCACAGCATATGCTCAAGAGATT
CAGAAACTCAGTAATTCTACAGCTGTGACTTTCAAGATTACCAGACTTCCAATCCAATGTGAGTTCA
TTTGTGGACGAGCACGAACCCCTCGATGGTGTCAAGTAGTTGTATTTCTGTCAATAAACACTCTCCACAA
AGCTCGCTGTCCGATGTTTCAGAAGTGTCTCAGTAGAACACACGCAGGAGAGCTCTGTGACGGGAAGC
TGCAGAAGTCTGAAAACAAGTTCAGATTATCAAGCAAGAGCCGATGGAATTAGAGAGCTACACAAGG
GAGCCAAGAGATGACCGAGGCTCTTACACAGCGTCCATCTATCAAACTATATGGGAATTTCTTCTCT
GGTACTCACACTCTCCCCACTACTGCAAGTCAACCGATCCTCCAGCAACTCCCCGAGAACGTCGGAA
ACTGATGATGGTGTGGTAGGAAAGTCACTGATGGAGAAGACGAGCAACAGGTCCCCAAGGGCCCCATC
CATTCTCCAGTTGAACTCAAGCATGTGCATGCAACTGTGGTTAAAGTTCAGAAGTGAATTCCTCTGCC
TTGCCACACAAGCTCCGGATCAAAGCCAAAGCCATGCAGATCAAAGTAGAAGCCTTTGATAATGAATTT
GAGGCCACGCAAAAACCTTCTCACCTATTGACATGACATCTAAAAGACATTTTGAAGTTCGAAAAGCAT
AGTGCCCCAAGTATGGTACATTCTTCTTACTCCTTTCTCAGTGCAAGTACTAACATTCAAGATTGG
TCTCTCAAATCGGAGCACTGGCATCAAAAAGAAGTGTGAGTGGCAAAACTCAGAATAGTTTCAAAGTGG
GTTGTTGAAATGAAAGACAGTGGCTACAAAGTTTCTGACCAGAGAACTGTATTTGAAGCAGGGGATA
GCAAATCTATCTGCAGAGTTGTCTCACTCAAGAGACTTATAGCCACACAACCAATCTCTGCTTCAGAC
TCTGGG
ACGCGTACGCGGCCGCTCGAG - GFP Tag - GTTTAAAC
```



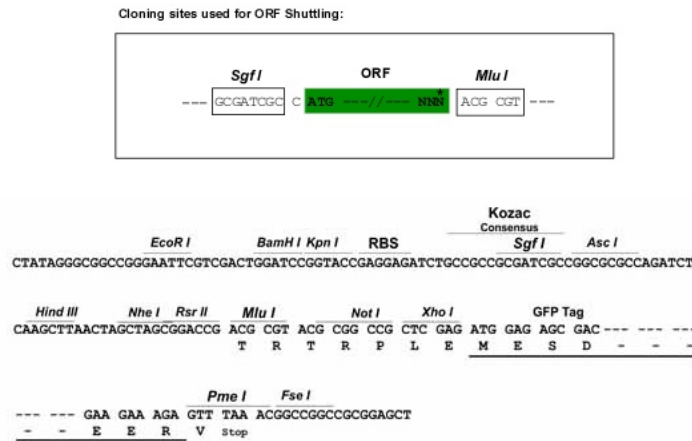
[View online »](#)

**Protein Sequence:** >Peptide sequence encoded by RG238367  
 Blue=ORF Red=Cloning site Green=Tag(s)

MQLRKMQTVKKEQASLDASSNVDKMMVLNSALTEVSEDSTTGEELLSEGSVGNKSSACRRKREFIPD  
 EKKDAMYWEKRRKNNEAAKRSREKRRLNDLVLENKLIALGEENATLKAELLSLKLKFLISSTAYAQEI  
 QKLSNSTAVYFQDYQTSKSNVSSFVDEHEPSMVSSCISVIKHSPQSSLSDVSEVSSVEHTQESSVQGS  
 CRSPENKFQIIKQEPMELESYTREPRDDRGSYTASIQNYMGNFSFGYSHSPLLQVNRSSNSPRTSE  
 TDDGVVGKSSDGEDEQQVPKGPVHSPVELKHHVHATVVKVPEVNSSALPHKLRRIKAKAMQIKVEAFDNEF  
 EATQKLSPPIDMTSKRHFELEKHSAPSMVHSSLTPFSVQVTNIQDWSLSEHWHQKELSGKTQNSFKTG  
 VVEMKDSGYKVS DPENLYLKQGIANLSAEVVS LKRLIATQPI SASDSG  
 TRTRPLEMESDESGLPAMEIECRITGTLNGVEFELVGGEGTPEQGRMTNKMSTKGALTFSPYLLSHV  
 MGYGFYHFGTYPSTYENPFLHAINNGGYNTRIEKYEDGGVLHVSFSYRYEAGRVIGDFKVMGTGFPED  
 SVIFTDKIIIRSNATVEHLHPMGDNDLDGSFTRTFLRDGGYSSVVD SHMHFKSAIHPSILQNGGPMFA  
 FRRVEEDHSNTELGIVEYQHAFKTPDADAGEERV

**Restriction Sites:** SgfI-MluI

**Cloning Scheme:**



**ACCN:** NM\_001289999

**ORF Size:** 1386 bp

**OTI Disclaimer:** The molecular sequence of this clone aligns with the gene accession number as a point of reference only. However, individual transcript sequences of the same gene can differ through naturally occurring variations (e.g. polymorphisms), each with its own valid existence. This clone is substantially in agreement with the reference, but a complete review of all prevailing variants is recommended prior to use. [More info](#)

**OTI Annotation:** This clone was engineered to express the complete ORF with an expression tag. Expression varies depending on the nature of the gene.

**Components:** The ORF clone is ion-exchange column purified and shipped in a 2D barcoded Matrix tube containing 10ug of transfection-ready, dried plasmid DNA (reconstitute with 100 ul of water).

**RefSeq:** [NM\\_001289999.1](#), [NP\\_001276928.1](#)

RefSeq Size: 2247 bp

RefSeq ORF: 1389 bp

Locus ID: 4783

UniProt ID: [Q16649](#)

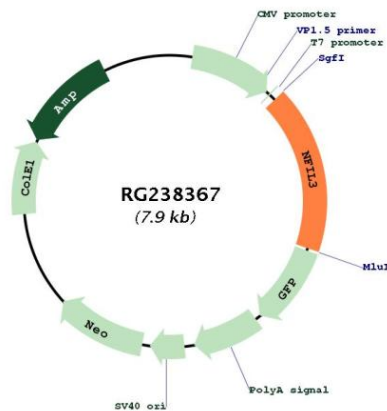
Cytogenetics: 9q22.31

Protein Families: Transcription Factors

MW: 51.5 kDa

**Gene Summary:** The protein encoded by this gene is a transcriptional regulator that binds as a homodimer to activating transcription factor (ATF) sites in many cellular and viral promoters. The encoded protein represses PER1 and PER2 expression and therefore plays a role in the regulation of circadian rhythm. Three transcript variants encoding the same protein have been found for this gene. [provided by RefSeq, Feb 2014]

**Product images:**



Circular map for RG238367