

Product datasheet for **RG238352**

AZIN2 (NM_001293562) Human Tagged ORF Clone

Product data:

Product Type:	Expression Plasmids
Product Name:	AZIN2 (NM_001293562) Human Tagged ORF Clone
Tag:	TurboGFP
Symbol:	AZIN2
Synonyms:	ADC; AZI2; AZIB1; ODC-p; ODC1L; ODCp
Mammalian Cell Selection:	Neomycin
Vector:	pCMV6-AC-GFP (PS100010)
E. coli Selection:	Ampicillin (100 ug/mL)
ORF Nucleotide Sequence:	>RG238352 representing NM_001293562. Blue=ORF Red=Cloning site Green=Tag(s)

```
GCTCGTTTGTAGTGAACCGTCAGAATTTTGTAAATACGACTCACTATAGGGCGGCCGGGAATTCGTCGACTG
GATCCGGTACCGAGGAGATCTGCCGCCGCGATCGCC
ATGGCTGGCTACCTGAGTGAATCGGACTTTGTGATGGTGGAGGAGGGCTTCAGTACCCGAGACCTGCTG
AAGGAACCTCACTCTGGGGCCTCACAGGCCACCACGGACGAGGTAGCTGCCTTCTTCGTGGCTGACCTG
GGTGCCATAGTGAGGAAGCACTTTTGTCTTCTGAAGTGCCTGCCACGAGTCCGGCCCTTTTATGTGTGC
AAGTGCAACAGCAGCCAGGTGTGCTGAAGTTCTGGCCAGCTGGGGCTGGGCTTTAGCTGTGCCAAC
AAGGCAGAGATGGAGTTGGTCCAGCATATTGGAATCCCTGCCAGTAAGATCATCTGCCCAACCCCTGT
AAGCAAATTCACAGATCAAATATGCTGCCAAGCATGGGATCCAGCTGCTGAGCTTTGACAAATGAGATG
GAGCTGGCAAAGGTGGTAAAGAGCCACCCAGTGCCTAAGATGGTTCTGTGATTGCTACCGATGACTCC
CACTCCCTGAGCTGCCTGAGCCTAAAGTTTGGAGTGTCACTGAAATCCTGCAGACACCTGCTTGAAT
GCGAAGAAGCACCATGTGGAGGTGGTGGGTGTGAGTTTTACATTTGGCAGTGGCTGTCTGACCCTCAG
GCCTATGCTCAGTCCATCGCAGACGCCCGGCTCGTGTGAAATGGGCACCGAGCTGGGTACAAGATG
CACGTTCTGGACCTTGGTGGTGGCTTCCCTGGCACAGAAGGGGCCAAAGTGAATTTGAAGAGATTGCT
TCCGTGATCAACTCAGCCTTGGACCTGTACTTCCAGAGGGCTGTGGCGTGGACATCTTTGCTGAGCTG
GGGCGCTACTACGTGACCTCGGCCTTCACTGTGGCAGTCAGCATATTGCCAAGAAGGAGGTTCTGCTA
GACCAGCCTGGCAGGGAGGAGGAAAATGGTTCCACCTCCAAGACCATCGTGTACCACCTTGTATGAGGGC
GTGTATGGGATCTTCAACTCAGTCTGTTTGACAACATCTGCCCTACCCCATCCTGCAGAAGAAACCA
TCCACGGAGCAGCCCTGTACAGCAGCAGCCTGTGGGGCCCGCGGTTGATGGCTGTGATTGCGTGGCT
GAGGGCCTGTGGCTGCCCAACTACACGTAGGGGACTGGCTGGTCTTTGACAACATGGGCGCCTACACT
GTGGGCATGGGTTCCCCCTTTGGGGGACCCAGGCCTGCCACATCACCTATGCCATGTCCCGGTGGCC
TGGGAAGCGTGCGAAGGCAGCTGATGGCTGCAGAACAGGAGGATGACGTGGAGGGTGTGTGCAAGCCT
CTGTCTCGCGTGGGAGATCACAGACCCCTGTGCGTGGGCCCTGTCTTACCCACGCGAGCATCATG
ACGCGTACGCGGCCGCTCGAG - GFP Tag - GTTTAAAC
```



[View online »](#)

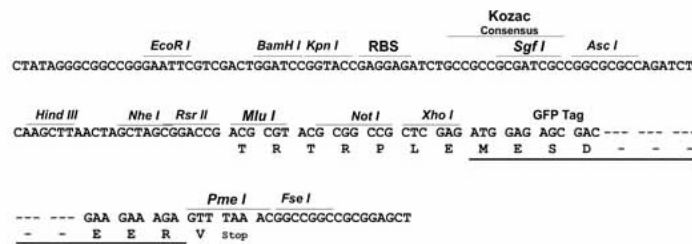
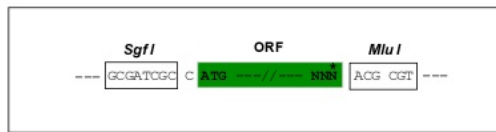
Protein Sequence: >Peptide sequence encoded by RG238352
 Blue=ORF Red=Cloning site Green=Tag(s)

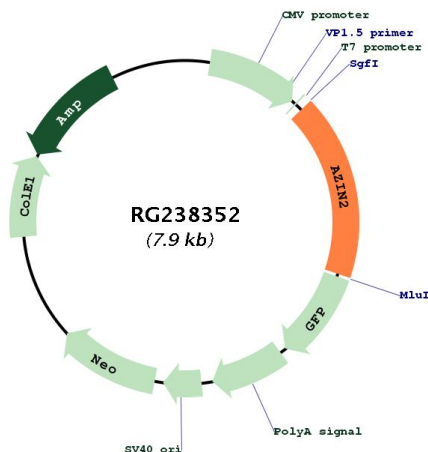
MAGYLSSEDFVMVEEGFSTRDLLKELTLGASQATTDEVAFFVADLGAIVRKHFCFLKCLPRVRPFYAV
 KCNSSPGVLKVLQGLGLFSCANKAEMELVQHIGIPASKIICANPCKQIAQIKYAAKHGIQLLSFDNEM
 ELAKVVKSHPSAKMVLCIATDDSHLSLCLSLKFGVSLKSCRHLLENAKHHVEVVGVSFHIGSGCPDPQ
 AYAQSIADARLVFEMGTELGHKMHVLDLGGGFPGTGAKVRFEEIASVINSALDLYFPEGCGVDIFAEL
 GRYVTSFTVAVSIIAKKEVLLDQPGREEENGSTSKTIVYHLDEGVYGFNSVLFDNICPTPILQKKP
 STEQPLYSSSLWGPVAVDGCDCVAEGLWLPQLHVGDWLVFDNMGAYTVGMGSPFWGTQACHITYAMSRVA
 WEALRRQLMAAEQEDDVEGVCKPLSCGWEITDTLCVGPVFTPASIM
TRTRPLEMESDESGLPAMEIECRITGTLNGVEFELVGGEGTPEQGRMTNKMSTKGALTFSPYLLSHV
 MGYGFYHFGTYPSTYENPFLHAINNGGYNTRIEKYEDGGVLHVSFSYRYEAGRVIGDFKVMGTGFPED
 SVIFTDKIIRSNATVEHLHPMGDNDLDGSFTRTFLRDGGYSSVVDSHMHFKSAIHPSILQNGGPMFA
 FRRVEEDHSNTELGIVEYQHAFKTPDADAGEERV

Restriction Sites: SgfI-MluI

Cloning Scheme:

Cloning sites used for ORF Shutting:



Plasmid Map:


ACCN: NM_001293562

ORF Size: 1380 bp

OTI Disclaimer: The molecular sequence of this clone aligns with the gene accession number as a point of reference only. However, individual transcript sequences of the same gene can differ through naturally occurring variations (e.g. polymorphisms), each with its own valid existence. This clone is substantially in agreement with the reference, but a complete review of all prevailing variants is recommended prior to use. [More info](#)

OTI Annotation: This clone was engineered to express the complete ORF with an expression tag. Expression varies depending on the nature of the gene.

Components: The ORF clone is ion-exchange column purified and shipped in a 2D barcoded Matrix tube containing 10ug of transfection-ready, dried plasmid DNA (reconstitute with 100 ul of water).

RefSeq: [NM_001293562.2](#)

RefSeq Size: 2120 bp

RefSeq ORF: 1383 bp

Locus ID: 113451

UniProt ID: [Q96A70](#)

Cytogenetics: 1p35.1

Protein Families: Druggable Genome

Protein Pathways: Arginine and proline metabolism, Metabolic pathways

MW: 50.4 kDa

Gene Summary:

The protein encoded by this gene belongs to the antizyme inhibitor family, which plays a role in cell growth and proliferation by maintaining polyamine homeostasis within the cell. Antizyme inhibitors are homologs of ornithine decarboxylase (ODC, the key enzyme in polyamine biosynthesis) that have lost the ability to decarboxylase ornithine; however, retain the ability to bind to antizymes. Antizymes negatively regulate intracellular polyamine levels by binding to ODC and targeting it for degradation, as well as by inhibiting polyamine uptake. Antizyme inhibitors function as positive regulators of polyamine levels by sequestering antizymes and neutralizing their effect. This gene encodes antizyme inhibitor 2, the second member of this gene family. Like antizyme inhibitor 1, antizyme inhibitor 2 interacts with all 3 antizymes and stimulates ODC activity and polyamine uptake. However, unlike antizyme inhibitor 1, which is ubiquitously expressed and localized in the nucleus and cytoplasm, antizyme inhibitor 2 is predominantly expressed in the brain and testis and localized in the endoplasmic reticulum-golgi intermediate compartment. Recent studies indicate that antizyme inhibitor 2 is also expressed in specific cell types in ovaries, adrenal glands and pancreas, and in mast cells. The exact function of this gene is not known, however, available data suggest its role in cell growth, spermiogenesis, vesicular trafficking and secretion. Accumulation of antizyme inhibitor 2 has also been observed in brains of patients with Alzheimer's disease. There has been confusion in literature and databases over the nomenclature of this gene, stemming from an earlier report that a human cDNA clone (identical to ODCp/AZIN2) had arginine decarboxylase (ADC) activity (PMID:14738999). Subsequent studies in human and mouse showed that antizyme inhibitor 2 was devoid of arginine decarboxylase activity (PMID:19956990). Alternatively spliced transcript variants have been described for this gene. [provided by RefSeq, Sep 2014]