

Product datasheet for **RG238346**

CDC2L6 (CDK19) (NM_001300960) Human Tagged ORF Clone

Product data:

Product Type:	Expression Plasmids
Product Name:	CDC2L6 (CDK19) (NM_001300960) Human Tagged ORF Clone
Tag:	TurboGFP
Symbol:	CDK19
Synonyms:	bA346C16.3; CDC2L6; CDK11; DEE87; EIEE87
Mammalian Cell Selection:	Neomycin
Vector:	pCMV6-AC-GFP (PS100010)
E. coli Selection:	Ampicillin (100 ug/mL)
ORF Nucleotide Sequence:	>RG238346 representing NM_001300960. Blue=ORF Red=Cloning site Green=Tag(s)

```
GCTCGTTTAGTGAACCGTCAGAATTTGTAAACGACTACTATAGGGCGCCGGGAATTCGTCGACTG
GATCCGGTACCGAGGAGATCTGCCGCCCGCATCGCC
ATGGATTATGATTTCAAGGCGAAGCTGGCGGGAGCGGGAGCGGGTGGAGGATTTGTTTGAGTACGAA
GGGTGCAAAGTGGGACGCGGCACCTACGGTCACGTCTACAAGGCGAGGCGAAAGATGAAAAGATGAA
AAGGAATATGCATTGAAGCAAATGAAGGCACAGGAATATCCATGTCGGCTTGTAGAGAGATTGCACTT
TTGCGAGAATTGAAGCACCTAATGTGATTGCATTGCAGAAGGTGTTCTTTCTCACAGTGACAGGAAG
GTATGGCTGCTGTTTATTATGCAGAGCATGACTTGTGGCATATTATTAAGTTTCACCGTGCATCAAAA
GCAAATAAAAAGCCCATGCAGTTGCCAAGATCTATGGTTAAATCCTTACTTTACCAGATTCTTGATGGT
ATCCATTACCTCCATGCAAATTGGGTGCTTACAGAGACTTGAAACCAGCAAATATCCTAGTAATGGGA
GAAGGTCCTGAGAGGGGAGAGTCAAAAATAGATATATGGCAATAGGTTGTATTTGCTGAATTGTTG
ACTTCGGAACCTATTTTTCACTGTCGTGAGGAAGATATAAAAACAAGCAATCCCTTTTCATCATGACAA
CTGGATCGGATATTTAGTGTGATGGGGTTTCTGCAGATAAAGACTGGGAAGATATTAGAAAAGATGCCA
GAATATCCACACTTCAAAAAGACTTTAGAAGAACAACGTATGCCAACAGTAGCCTCATAAAGTACATG
GAGAAACACAAGGTCAAGCCTGACAGCAAAGTGTTCCTCTTGCTCAGAACTCCTGACCATGGATCCA
ACCAAGAGAATTACCTCGGAGCAAGCTCTGCAGGATCCCTATTTTCAGGAGGACCCTTTGCCAACATTA
GATGATTTGCCGGCTGCCAGATTCCATACCCAAACGAGAATTCCTTAATGAAGATGATCCTGAAGAA
AAAGGTGACAAGAATCAGCAACAGCAGCAGAACCAGCATCAGCAGCCACAGCCCTCCACAGCAGGCA
GCAGCCCTCCACAGGCGCCCCACCACAGCAGAACAGCACCCAGACCAACGGGACCGCAGGTGGGGCT
GGGGCCGGGGTGGGGGACCGGAGCAGGGTTCAGCAGCAGCCAGGACTCCAGCCTGAACCAGGTGCCT
CCAAACAAGAAGCCACGGCTAGGGCCTTACAGGCGAAACTCAGGTGGACCTGTGATGCCCTCGGATTAT
CAGCACTCCAGTTCTCGCTGAATTACCAAAGCAGCGTTCAGGGATCCTCTCAGTCCCAGAGCACACTT
GGTACTCTTCTCGTCTCAGCAGAGCTCACAGTACCACCATCTCACCAGGCCACCGGTAC
ACGCGTACGCGGCCGCTCGAG - GFP Tag - GTTTAAAC
```



[View online »](#)

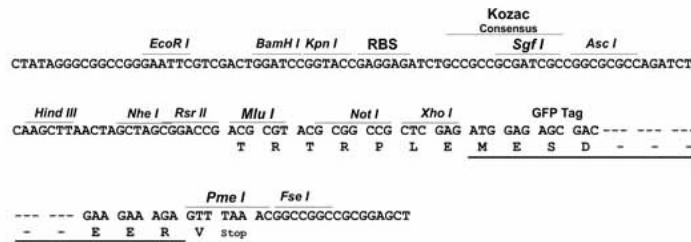
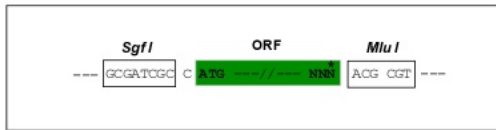
Protein Sequence: >Peptide sequence encoded by RG238346
 Blue=ORF Red=Cloning site Green=Tag(s)

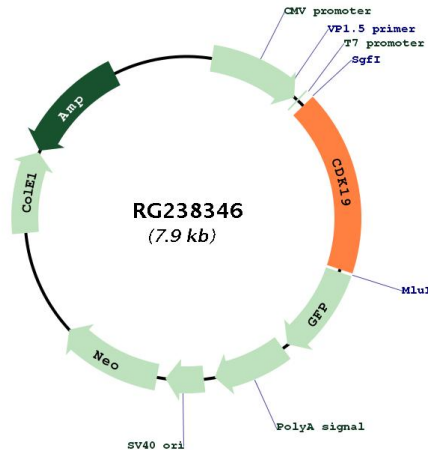
MDYDFKAKLAAERERVELDFEYEGCKVGRGTYGHVYKARRKDGKDEKEYALKQIEGTGISMSACREIAL
 LRELKHPNVIALQKVFLSHSDRKVWLLFDYAEHDLWHI IKFHRASKANKKPMQLPRSMVKSLLYQILDG
 IHYLHANWVLRDLKPANILVMGEGPERGRVKIDIWAIGCIFAELLTSEPIFHCROEDIKTSNPFHHDQ
 LDRIFSVMGFPADKDWEDIRKMPEYPTLQKDFRRTTYANSSLIK YMEKHKVKPDSKVFLLLQKLLTMDP
 TKRITSEQALQDPYFQEDPLPTLDVFAQCQIPYPKREFLNEDDPEEKGDKNQQQQNQHQQTAPPQQA
 AAPPQAPPQQNSTQTNGTAGGAGAGVGGTGAGLQHSQDSSLNQVPPNKKPRLGPGSANSQGGVMPMPDY
 QHSSRLNYQSSVQSSQSSTLGYSSSSQSSQYHPSHQAHRY
TRTRPLEMESDESGLPAMEIECRITGTLNGVEFELVGGGEGTPEQGRMTNKMSTKGALTFSPYLLSHV
 MGYGFYHFGTYPSGYENPFLHAINNGGYNTRIEKYEDGGVLHVSFSYRYEAGRVIGDFKVMGTGFPED
 SVIFTDKIIRSNATVEHLHPMGDNDLDGSFTRTFLRDGGYSSVVD SHMHFKSAIHPSILQNGGPMFA
 FRRVEEDHSNTELGIVEYQHAFKTPDADAGEERV

Restriction Sites: SgfI-MluI

Cloning Scheme:

Cloning sites used for ORF Shutting:



Plasmid Map:


ACCN: NM_001300960

ORF Size: 1374 bp

OTI Disclaimer: The molecular sequence of this clone aligns with the gene accession number as a point of reference only. However, individual transcript sequences of the same gene can differ through naturally occurring variations (e.g. polymorphisms), each with its own valid existence. This clone is substantially in agreement with the reference, but a complete review of all prevailing variants is recommended prior to use. [More info](#)

OTI Annotation: This clone was engineered to express the complete ORF with an expression tag. Expression varies depending on the nature of the gene.

Components: The ORF clone is ion-exchange column purified and shipped in a 2D barcoded Matrix tube containing 10ug of transfection-ready, dried plasmid DNA (reconstitute with 100 ul of water).

RefSeq: [NM_001300960.2](#)

RefSeq Size: 6114 bp

RefSeq ORF: 1377 bp

Locus ID: 23097

UniProt ID: [Q9BWU1](#)

Cytogenetics: 6q21

Protein Families: Druggable Genome, Protein Kinase

MW: 52.3 kDa

Gene Summary:

This gene encodes a protein that is one of the components of the Mediator co-activator complex. The Mediator complex is a multi-protein complex required for transcriptional activation by DNA binding transcription factors of genes transcribed by RNA polymerase II. The protein encoded by this gene is similar to cyclin-dependent kinase 8 which can also be a component of the Mediator complex. Alternative splicing results in multiple transcript variants encoding distinct isoforms. [provided by RefSeq, Jul 2014]