

Product datasheet for **RG238345**

Noelin (OLFM1) (NM_001282612) Human Tagged ORF Clone

Product data:

Product Type:	Expression Plasmids
Product Name:	Noelin (OLFM1) (NM_001282612) Human Tagged ORF Clone
Tag:	TurboGFP
Symbol:	Noelin
Synonyms:	AMY; NOE1; NOELIN1; Olfa
Mammalian Cell Selection:	Neomycin
Vector:	pCMV6-AC-GFP (PS100010)
E. coli Selection:	Ampicillin (100 ug/mL)
ORF Nucleotide Sequence:	>RG238345 representing NM_001282612. Blue=ORF Red=Cloning site Green=Tag(s)

```
GCTCGTTTGTAGTGAACCGTCAGAATTTTGTAAACGACTCACTATAGGGCGGCCGGGAATTCGTGCGACTG
GATCCGGTACCGAGGAGATCTGCCGCCGCGATCGCC
ATGGGAGAAGCCCGGGACGGGAGGGCCGCGGGCCGTGCCCCAGCTGGAGTCCCGCGCCGCCGCCGG
GTGCTGCCACCAACCCTGAGGAGAGCTGGCAGGTGTACAGCTCTGCCAGGACAGCGAGGGCAGGTGT
ATCTGCACAGTGGTTCGCTCCACAGCAGACCATGTGTTACGGGATGCCCGCACAAAACAGCTGAGGCAG
CTACTGGAGAAGGTGCAGAACATGTCTCAATCCATAGAGGTCTTGGACAGGCGGACCCAGAGAGACTTG
CAGTACGTGGAGAAGATGGAGAACAAATGAAAGGACTGGAGTCCAAGTCAAACAGGTGGAGGAGAGT
CATAAGCAACACCTGGCCAGGCAGTTTAAAGCGATAAAAAGCGAAAATGGATGAACCTTAGGCCTTTGATA
CCTGTGTTGGAAGAGTACAAGGCCGATGCCAAATTTGGTATTGCAGTTTAAAGAGGAGGTCCAGAATCTG
ACGTCACTGCTTAAACGAGCTGCAAGAGGAAATGGCGCCTATGACTACGATGAACCTCAGAGCAGAGTG
TCCAATCTTGAAGAAAGGCTCCGTGCATGCATGCAAAAACCTAGCTTGGCGGAAGTTGACGGGCATCAGT
GACCCCGTGACTGTCAAGACCTCCGGCTCGAGGTTTCGGATCCTGGATGACAGACCCTCTCGCCCTGAA
GGCGATAACCGGGTGTGGTACATGGACGGCTATCACAACAACCGCTTCGTACGTGAGTACAAGTCCATG
GTTGACTTCATGAACACGGACAATTTACCTCCACCGTCTCCCCACCCCTGGTCGGGCACGGGGCAG
GTGGTCTACAACGGTTCTATCTACTTCAACAAGTTCAGAGCCACATCATCATCAGGTTTGACCTGAAG
ACAGAGACCATCCTCAAGACCCGACGCTGGACTATGCCGTTACAACAACATGTACCCTACGCTGG
GGTGGCCACTCGGACATCGACCTCATGGTGGACGAGAGCGGGCTGTGGCCGTGTACGCCACCAACCAG
AACGCTGGCAACATCGTGGTCACTAGGCTGGACCCCGTGTCCCTGCAGACCCTGCAGACCTGGAACACG
AGCTACCCCAAGCGCAGCGCCGGGAGGCCTTCATCATCTGCGGCACGCTGTACGTACCAACGGCTAC
TCAGGGGGTACCAAGGTCCACTATGCATACCAGACCAATGCCTCCACCTATGAATACATCGACATCCCA
TTCCAGAACAAATACTCCACATCTCCATGCTGGACTACAACCCCAAGGACCGGGCCCTGTATGCCTGG
AACACGGCCACCAGATCCTCTACAACGTGACCCTTCCACGTATCCGCTCCGACGAGTTG
ACGCGTACGCGGCCGCTCGAG - GFP Tag - GTTTAAAC
```



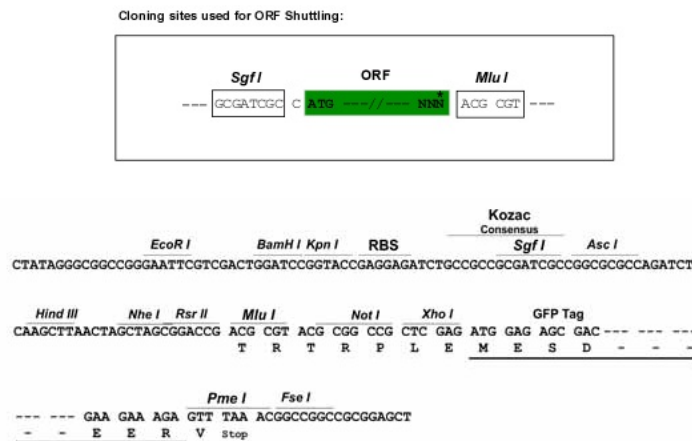
[View online >](#)

Protein Sequence: >Peptide sequence encoded by RG238345
 Blue=ORF Red=Cloning site Green=Tag(s)

MGEAPGREGRGPCPQLESPPRRRRLPTNPPEESWQVYSSAQDSEGRICITVVPQQTMCSR DARTKQLRQ
 LLEKVQNSQSIEVLD RRTQ RDLQYVEKMENQMKGLESKFKQVEESHKQHLARQFKAIKAKMDEL RPLI
 PVLEEKADAKLVLQFKEEVQNLTSVLNELQEEIGAYDYDELQSRVSNLEERLRACMQKLACGKLTGIS
 DPVTVKTSGRFSGSWMTDPLAPEGDNRVWYMDGYHNNRFVREYKSMVDFMNTDNFTSHR LPHPWSGTGQ
 VVYNGSIYFNKFQSHIIRFDLKTETILKTRSLDYAGYNNMYHYAWGGHSDIDL MVDESGLWAVYATNQ
 NAGNIVVSR LDPVSLQTLQTWNTSYPKRSAGEAFIICGTLVYVTNGYSGGKTVHYAYQTNASTYEYIDIP
 FQNKYSHISMLDYNPKDRALYAWNNGHQILYNVTLFHVIRSD E L
 TRTRPLEMESDESGLPAMEIECRITGTLNGVEFELVGGEGTPEQGRMTNKMKSTKGALTFSPYLLSHV
 MGYGFYHFGTYP SGYENPFLHAINNGGYNTRIEKYEDGGVLHVSFSYRYEAGRVIGDFKVMGTGFPED
 SVIFTDKIIRSNATVEHLHPMGDNDLDGSFTRTFLRDGGYSSVVD SHMHFKSAIHPSILQNGGPMFA
 FRRVEEDHSNTELGIVEYQHAFKTPDADAGEERV

Restriction Sites: SgfI-MluI

Cloning Scheme:



ACCN: NM_001282612

ORF Size: 1374 bp

OTI Disclaimer: The molecular sequence of this clone aligns with the gene accession number as a point of reference only. However, individual transcript sequences of the same gene can differ through naturally occurring variations (e.g. polymorphisms), each with its own valid existence. This clone is substantially in agreement with the reference, but a complete review of all prevailing variants is recommended prior to use. [More info](#)

OTI Annotation: This clone was engineered to express the complete ORF with an expression tag. Expression varies depending on the nature of the gene.

Components: The ORF clone is ion-exchange column purified and shipped in a 2D barcoded Matrix tube containing 10ug of transfection-ready, dried plasmid DNA (reconstitute with 100 ul of water).

RefSeq: [NM_001282612.1](#), [NP_001269541.1](#)

RefSeq Size: 2502 bp

RefSeq ORF: 1377 bp

Locus ID: 10439

UniProt ID: [Q99784](#)

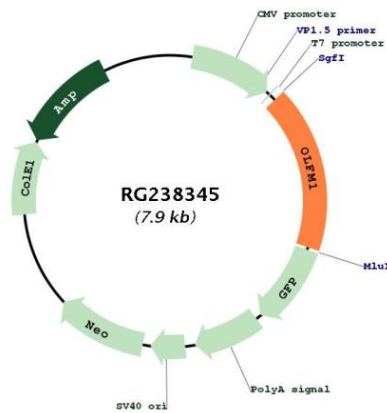
Cytogenetics: 9q34.3

Protein Families: Druggable Genome

MW: 53.3 kDa

Gene Summary: This gene product shares extensive sequence similarity with the rat neuronal olfactomedin-related ER localized protein. While the exact function of the encoded protein is not known, its abundant expression in brain suggests that it may have an essential role in nerve tissue. Several alternatively spliced transcripts encoding different isoforms have been found for this gene. [provided by RefSeq, Jul 2008]

Product images:



Circular map for RG238345