

## Product datasheet for **RG238337**

### SCFD1 (NM\_001283031) Human Tagged ORF Clone

#### Product data:

Product Type:	Expression Plasmids
Product Name:	SCFD1 (NM_001283031) Human Tagged ORF Clone
Tag:	TurboGFP
Symbol:	SCFD1
Synonyms:	C14orf163; RA410; SLY1; SLY1P; STXBP1L2
Mammalian Cell Selection:	Neomycin
Vector:	pCMV6-AC-GFP (PS100010)
E. coli Selection:	Ampicillin (100 ug/mL)
ORF Nucleotide Sequence:	>RG238337 representing NM_001283031. Blue=ORF Red=Cloning site Green=Tag(s)

```
GCTCGTTTGTAGTGAACCGTCAGAATTTTGTAAACGACTCACTATAGGGCGCCGGGAATTCGTGACTG
GATCCGGTACCGAGGAGATCTGCCGCCGCGATCGCC
ATGGAAACTGTTATGGACACTATAGTTGACAGCCTCTTCTGCTTTTTTGTACTCTGGGTGCTGTTCCCT
ATAATCAGATGTTCAAGAGGAACAGCAGCAGAAATGGTAGCAGTAAAAGTACACAAGAACTTCGAGAA
AATCTAAGAGATGCAAGAAACAGTCTTTTTACAGGTGATACACTGGAGCTGGCCAATTCAGCTCCAG
AGGCCCTTATTAGTCCTGTTGACAGAAACATAGATTTGGCAACTCCTTACATCATACTGGACATAT
CAAGCATTGGTGCACGATGTACTGGATTCCATTTAAACAGGGTTAATTTGGAAGAATCTTCAGGAGTG
GAAAACCTCCAGCTGGTGTAGACCAAAGAGAAAAACAAGAAGTCTTATGATTTAACTCCGGTTGAT
AAATTTTGGCAAAAACATAAAGGAAGTCCATTCAGAGAGTTGCAGAATCAGTTCAGCAAGAACTAGAA
TCTTACAGAGCACAGGAAGATGAGGTCAAACGACTTAAAAGCATTATGGGACTAGAAGGGGAAGATGAA
GGAGCCATAAGTATGCTTTCTGACAATACCGCTAAGCTAACATCAGCTGTTAGTTCTTTGCCAGAACTC
CTTGAGAAAAAAGACTTATTGATCTCCATACAAATGTTGCCACTGCTGTTTTAGAACATATAAAGGCA
AGAAAAATTGGATGTATTTTTGAATATGAAGAAAAAATAATGAGCAAACTACTCTGGATAAATCTCTT
CTAGATAAATATCAGACCCTGATGCAGGAACCCAGAAGATAAAATGAGGTTGTTTCTTATCTATTAT
ATAAGCACACAGCAAGCACCTTCTGAGGCTGATTTGGAGCAATATAAAAAAGCTTAACTGATGCAGGA
TGCAACCTTAATCCTTTACAATATCAAAACAGTGGAAAGGCTTTTACCAAGATGGCCTCAGCTCCGGCC
AGCTATGGCAGCACTACCACTAAACCAATGGGTCTTTTATCACGAGTCATGAATACAGGATCACAGTTT
GTGATGGAAGGAGTGAAGAACCTGGTTTTGAAACAGCAAAATCTACCTGTTACTCGTATTTTGGACAAT
CTTATGGAGATGAAGTCAAACCCGAAACTGATGACTATAGATATTTTATCCCAAAATGCTGCGGGGC
AATGACAGCTCAGTTCCAGAAAATAAAATCCATTCCAAGAGGCCATTGTTTTTGGTGGGAGGAGGC
AACTACATTGAATATCAGAATCTTGTGACTACATAAAGGGGAAACAAGGCAAACACATTTTATATGGC
TGCAGTGAGCTTTTTAATGCTACACAGTTCATAAAACAGTTGTCACAACCTGGACAAAAG
ACGCGTACGCGGCCGCTCGAG - GFP Tag - GTTTAAAC
```



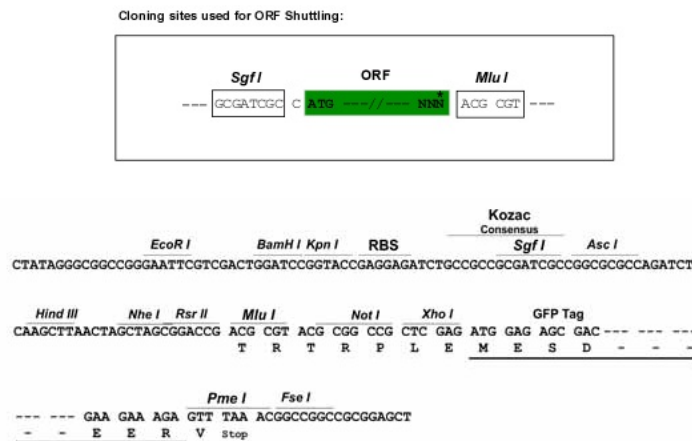
[View online »](#)

**Protein Sequence:** >Peptide sequence encoded by RG238337  
 Blue=ORF Red=Cloning site Green=Tag(s)

METVMDTIVDSLFCFFVTLGAVPIIRCSRGTAAEMVAVKLDKKLRENLRDARNSLFTGDTLGAGQFSFQ  
 RPLLVLVDRNIDLATPLHHTWYQALVHDVLDVDFHLNRVNLEESSGVENSPAGARPKRKNKSYDLTPVD  
 KFWQKHKGSPFPEVAESVQQELESYRAQEDEVKRLKSIIMGLEGEDEGAI SMLSDNTAKL TSAVSSLP  
 LEKKRLIDLHTNVATAVLEHIKARKLDVYFEYEEKIMSKTTLDKSLLDIISDPDAGTPEDKMRFLIYY  
 ISTQQAPSEADLEQYKALTDAGCNLNPLQYIKQWKAFTKMASAPASYGSTTTKPMGLLSRVMTGSQF  
 VMEGVKNLVLKQQLPVTRILDNLMEMKSNPETDDYRYFDPKMLRGNDSSVPRNKNPFQEAIVFVGGG  
 NYIEYQNLVDYIKGKQGHILYGCSELFNATQFIKLSQLGQK  
 TRTRPLEMESDESGLPAMEIECRITGTLNGVEFELVGGGEGTPEQGRMTNKMSTKGALTFSPYLLSHV  
 MGYGFYHFGTYPSGYENPFLHAINNGGYNTRIEKYEDGGVLHVSFSYRYEAGRVIGDFKVMGTGFPED  
 SVIFTDKIIRSNATVEHLHPMGDNDLDGSFTRTFLRDGGYSSVVD SHMHFKSAIHPSILQNGGPMFA  
 FRRVEEDHSNTELGIVEYQHAFKTPDADAGEERV

**Restriction Sites:** SgfI-MluI

**Cloning Scheme:**



**ACCN:** NM\_001283031

**ORF Size:** 1371 bp

**OTI Disclaimer:** The molecular sequence of this clone aligns with the gene accession number as a point of reference only. However, individual transcript sequences of the same gene can differ through naturally occurring variations (e.g. polymorphisms), each with its own valid existence. This clone is substantially in agreement with the reference, but a complete review of all prevailing variants is recommended prior to use. [More info](#)

**OTI Annotation:** This clone was engineered to express the complete ORF with an expression tag. Expression varies depending on the nature of the gene.

**Components:** The ORF clone is ion-exchange column purified and shipped in a 2D barcoded Matrix tube containing 10ug of transfection-ready, dried plasmid DNA (reconstitute with 100 ul of water).

**RefSeq:** [NM\\_001283031.1](#), [NP\\_001269960.1](#)

RefSeq Size: 2145 bp

RefSeq ORF: 1374 bp

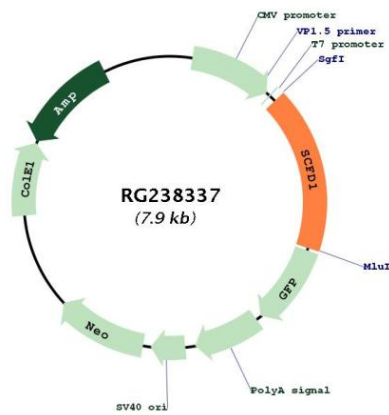
Locus ID: 23256

Cytogenetics: 14q12

MW: 52 kDa

**Gene Summary:** Plays a role in SNARE-pin assembly and Golgi-to-ER retrograde transport via its interaction with COG4. Involved in vesicular transport between the endoplasmic reticulum and the Golgi (By similarity).[UniProtKB/Swiss-Prot Function]

**Product images:**



Circular map for RG238337