

## Product datasheet for **RG238335**

### GABRA2 (NM\_001286827) Human Tagged ORF Clone

#### Product data:

Product Type:	Expression Plasmids
Product Name:	GABRA2 (NM_001286827) Human Tagged ORF Clone
Tag:	TurboGFP
Symbol:	GABRA2
Synonyms:	DEE78; EIEE78
Mammalian Cell Selection:	Neomycin
Vector:	pCMV6-AC-GFP (PS100010)
E. coli Selection:	Ampicillin (100 ug/mL)
ORF Nucleotide Sequence:	>RG238335 representing NM_001286827. Blue=ORF Red=Cloning site Green=Tag(s)

```
GCTCGTTT TAGTGAACCGTCAGAATTTTGT AATACGACTCACTATAGGGCGCCGGGAATTCGTCGACTG
GATCCGGTACCGAGGAGATCTGCCGCC GCGATCGCC
ATGAGGCTAAAAATAACATTACCATCTTTACGAGAATTCTTGACAGACTTCTGGATGTTACGATAATC
GGCTTAGACCAGGACTGGGAGGAATATAACAATTGATGTTTTCTTCGACAAAAATGGAAAGATGAACGT
TAAAAATTTAAAGGTCTATGAATATCCTTCGACTAAACAATTTAATGGCTAGCAAAATCTGGACTCCA
GATACCTTTTTTCACAATGGGAAAAATCAGTAGCTCATAATATGACAATGCCAAATAAGTTGCTTCGA
ATTCAGGATGATGGGACTCTGCTGTATACCATGAGGCTTACAGTTC AAGCTGAATGCCCAATGCACTTG
GAGGATTTCCCAATGGATGCTCATTTCATGTCCTCTGAAATTTGGCAGCTATGCATATACTTCCAGAG
GTCACCTATATTTGGACTTACAATGCATCTGATTACAGTACAGTTGCTCCCTGATGGCTCTAGGTTAAAT
CAATATGACCTGCTGGGCAATCAATCGGAAAGGAGACAATTAATCCAGTACAGGTGAATATACTGTA
ATGACAGCTCATTTCACCTGAAAAGAAAAATTGGGTATTTGTGATTCAAACCTATCTGCCTTGCATC
ATGACTGTCATTCTCTCCAAGTTTCAATCTGGCTTAACAGAGAATCTGTGCCTGCAAGAAGCTGTGTTT
GGAGTAACAAGTGCCTAACAATGACAACCTAAGCATCAGTGCCTGGAATTTCTCTCCCAAGTGGCT
TATGCAACTGCCATGGACTGGTTTATTGCTGTTGTTATGCATTTGTGTTCTCTGCCCTAATTGAATTT
GCAACTGTTAATTACTTCACCAAAAGAGGATGGGCTTGGGATGGGAAGAGTGTAGTAAATGACAAGTCC
CCTTCAATAAAAGCTGAAGGCATTACATTAACATACAACCTCAGTCAAAGCAATTTCTCAAGGAGCTAAG
CTAATATGGTCCAAGTATATAGCTTTCTCATGGCCAGTTTATTCCAAGAAAAGACTTTAGAGTACTTA
GAGAAGTGGATGGACTGTTTAACTTCAAACAATCTTCTAAAAAAGAAAAGGCTTCCGTTATGATACAG
AACACGCTTATGCAGTGGCTGTTGCCAATTATGCCCGAATCTTTCAAAGATCCAGTTCTCTCCACC
ATCTCCAAGAGTGCAACACGCCAGAACCAACAAGAAGCCAGAAAACAAGCCAGCTGAAGCAAAGAAA
ACTTTCAACAGTGTAGCAAAATGACAGAATGTCCAGAATAGTTTTTCCAGTTTTGTTTGGTACCTTT
AATTTAGTTTACTGGGCTACATATTTAAACAGAGAACCTGTATTAGGGGTCAGTCTT
ACGCGTACGCGGCCGCTCGAG - GFP Tag - GTTTAAAC
```



[View online >](#)

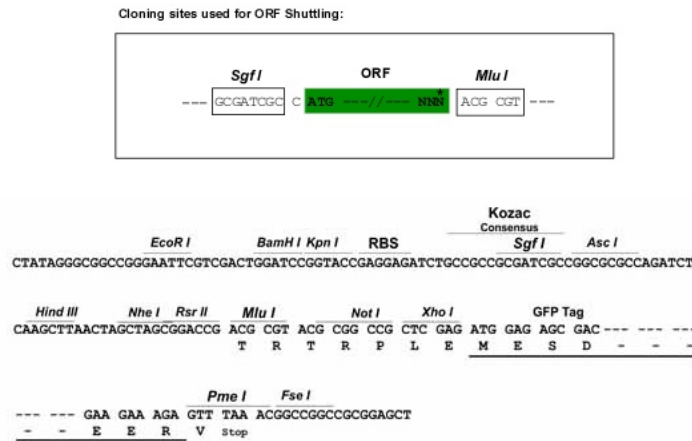
**Protein Sequence:** >Peptide sequence encoded by RG238335  
 Blue=ORF Red=Cloning site Green=Tag(s)

```

MRLKITLPSLREFLTD FWMVTIIGLDQDWE EYTI DVFFRQKWKDERLKFKGPMN IRLNNLMASKIWTP
DTFFHNGKKSVAHNMTMPN KLLRIQDDGTL LYMRLTVQAECPMHLED FPMDAHSCPLKFGSYAYTTSE
VTYIWTYNASDSVQVAPD GSRNLNQYDLLGQSIGKETIKSSTGEYVMTAHFHLKRKIGYFVIQTYLPCI
MTVILSQVSFWLNRESVPARTV FGVTTVLTMTT LSI SARNSLPKVAYATAMDWFIAVCYAFVFSALIEF
ATVNYFTKRGWAWDGKSVVNDK SPSIKAEGITL TYNSVKAILQGAKLIWSKYIAFSWPSLFQEKTEYL
EKWMDCLTFKQSSKKEKASVMI QNNAYAVAVANYAPNL SKDPVLSTISKSATTPEPNKKPENKPAEAKK
TFNSVSKIDRMSRIVFPVLF GTFNLVYWATYLNREPV LGVSP
TRTRPLEMESDESGLPAMEIECRITGTLNGVEFELVGGEGTPEQGRMTNKMKSTKGALTFSPYLLSHV
MGYGFYHFGTYPSGYENPFLHAI NNGGYNTRIEKYEDGGVLHVSFSYRYEAGRVIGDFKVMGTGFPED
SVIFTDKIIRSNATVEHLHPMGDNDL DGSFTRTFLRDGGYSSVVD SHMHFKSAIHPSILQNGGPMFA
FRRVEEDHSNTELGIVEYQHAFKTPDADAGEERV
  
```

**Restriction Sites:** SgfI-MluI

**Cloning Scheme:**



**ACCN:** NM\_001286827

**ORF Size:** 1368 bp

**OTI Disclaimer:** The molecular sequence of this clone aligns with the gene accession number as a point of reference only. However, individual transcript sequences of the same gene can differ through naturally occurring variations (e.g. polymorphisms), each with its own valid existence. This clone is substantially in agreement with the reference, but a complete review of all prevailing variants is recommended prior to use. [More info](#)

**OTI Annotation:** This clone was engineered to express the complete ORF with an expression tag. Expression varies depending on the nature of the gene.

**Components:** The ORF clone is ion-exchange column purified and shipped in a 2D barcoded Matrix tube containing 10ug of transfection-ready, dried plasmid DNA (reconstitute with 100 ul of water).

**RefSeq:** [NM\\_001286827.3](#)

RefSeq Size: 2538 bp

RefSeq ORF: 1371 bp

Locus ID: 2555

UniProt ID: [P47869](#)

Cytogenetics: 4p12

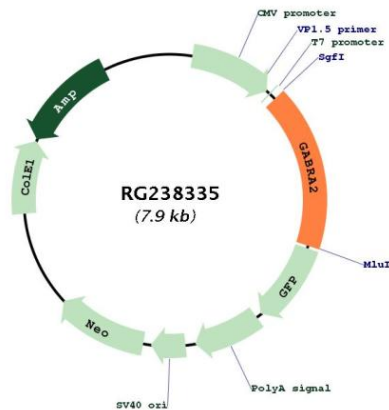
Protein Families: Druggable Genome, Ion Channels: Cys-loop Receptors, Transmembrane

Protein Pathways: Neuroactive ligand-receptor interaction

MW: 52.5 kDa

**Gene Summary:** GABA is the major inhibitory neurotransmitter in the mammalian brain where it acts at GABA-A receptors, which are ligand-gated chloride channels. Chloride conductance of these channels can be modulated by agents such as benzodiazepines that bind to the GABA-A receptor. At least 16 distinct subunits of GABA-A receptors have been identified. Alternatively spliced transcript variants encoding different isoforms have been found for this gene. [provided by RefSeq, Nov 2013]

**Product images:**



Circular map for RG238335